

Converting Colors

Decimal(14469306)

Have a look what the booklet for
Decimal(14469306) contains.

Decimal(14469306)	3
<i>Conversions</i>	4
<i>Details</i>	6
<i>Harmonies</i>	11
<i>Previews</i>	23
<i>Color Blindness Simulation</i>	26
<i>CSS Examples</i>	29

Color

Decimal(14469306)

Conversions

Conversions Part 1

Format	Color
Hex	DCC8BA
RGB	220, 200, 186
RGB Percent	86%, 78%, 73%
CMY	0.1373, 0.2157, 0.2706
CMYK	0.00, 0.09, 0.15, 0.14
HSL	25°, 33%, 80%
HSV	25°, 15%, 86%
XYZ	59.0324, 60.0694, 54.9376
YIQ	204.3840, 16.4140, -0.1140

Conversions

Conversions Part 2

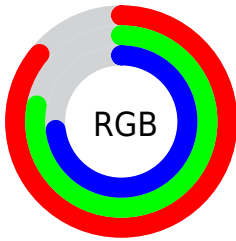
Format	Color
R _Y B	220, 210, 186
Decimal	14469306
CIE Lab	81.88, 4.72, 9.53
CIE LCh	82, 10.636, 63.648
Yxy	60.0694, 0.3392, 0.3451
Android (android.graphics.Color)	4292659386 (0xFFDCC8BA)
YUV	204.3840, -9.0633, 13.6952
Hunter-Lab	77.5044, 0.3244, 12.2265

Details

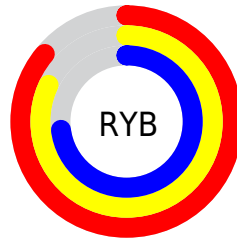
The Decimal color **14469306** is a light color, and the websafe version is hex **CCCCCC**. A complement of this color would be **12242652**, and the grayscale version is **13421772**.

A 20% lighter version of the original color is **16777202**, and **10850949** is the 20% darker color. If you saturate the color by 10%, you get **14465956**, and if you desaturate by 10%, it is **14472656**.

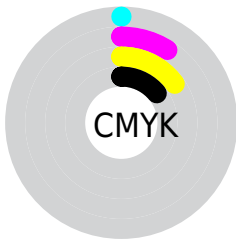
Distribution



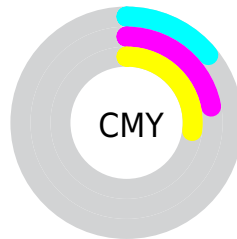
- Red (86%)
- Green (78%)
- Blue (73%)



- Red (86%)
- Yellow (82%)
- Blue (73%)



- Cyan (0%)
- Magenta (9%)
- Yellow (15%)
- Black (14%)



- Cyan (14%)
- Magenta (22%)
- Yellow (27%)

Brightness & Saturation Gradients

These gradients show how the Decimal color 14469306 changes by changing the brightness by 10 percent. The first figure shows a shift by +10% for each color and the second figure -10%.

Similar to the brightness gradients but the following saturation gradients show a change of the Decimal color 14469306 by changing the saturation by 10% instead.

 14469306

 14469306

16777215

 12627359

 16777202

 10850949

 9074796

 7430227

 5785660

 4207143

 2759954

 1311488

 0

 14469306

 14469306

 14465956

 14472656

 14462606

 14476006

 14459256

 14479356

 14455906

 14482687

 14452556

 14483455

 14449206

 14445856

 14442506

 14441216

Harmonies

Analogous

The Analogous color harmony consists of three colors that are next to each other on the color wheel.



14796481



14469306



13880248

Triad

The Triadic color harmony groups three colors that are evenly spaced from another and form a triangle on the color wheel.



14469306



11915980



13617628

Complementary

The Complementary color scheme is a pair of colors which are on the opposite of each other on the color wheel.



14469306



12242652

Split Complementary

Split-complementary colors differ from the complementary color scheme. The scheme consists of three colors, the original color and two neighbors of the complement color.



12831967



14469306



11784662

Square

The Square scheme is like the rectangle color scheme, but the four colors are evenly spaced on the color wheel.



14469306



12374466



12111837



14337749

Rectangle

The Rectangle color scheme consists of four colors that form a rectangle on the color wheel.



14469306



13356473



12111837



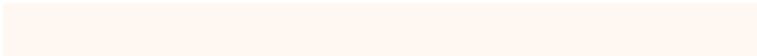
13355742

Sweetspot

The Sweet Spot groups the original color and five complimentary colors.



14469306



16775410



14465742



8420216



0



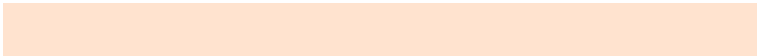
8421504

Same Dimension

The Same Dimension uses a secret algorithm to generate beautiful new colors.



14469306



16769999



14473658



7235427



11355904



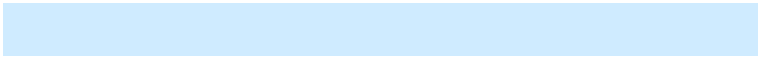
3019520

Inverse Universe

The Inverse Universe completely reimagines the original color for something new.



12242652



13626367



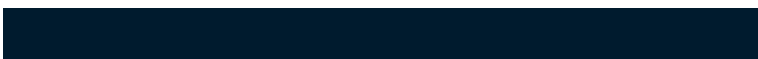
12238300



6515054



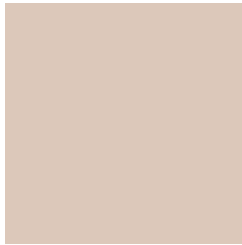
26285



6958

Previews

White Background



This preview shows how the Decimal color 14469306 looks on a white background.

Color Contrast Check

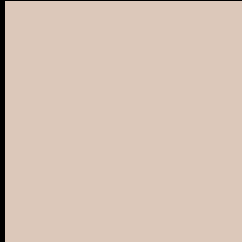
Large Text (above 18pt) WCAG AA × Fail

Any Text WCAG AA × Fail

Large Text (above 18pt) WCAG AAA × Fail

Any Text WCAG AAA × Fail

Black Background



This preview shows how the Decimal color 14469306 looks on a black background.

Color Contrast Check

Large Text (above 18pt) WCAG AA ✓ Pass

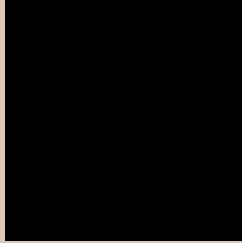
Any Text WCAG AA ✓ Pass

Large Text (above 18pt) WCAG AAA ✓ Pass

Any Text WCAG AAA ✓ Pass

If you want to check with other color combinations, try the [Color Contrast Checker](#).

Decimal 14469306 Background



This preview shows how black text looks on a background with the Decimal color 14469306.




This preview shows how white text looks on a background with the Decimal color 14469306.

Color Blindness Simulation

Color vision deficiency is a very complex topic, and I could not describe the different causes any better than Wikipedia does, so if you want to learn more, you should check out their [article about color blindness](#).

Dichromacy





Tritanopia
14664916

Trichromacy



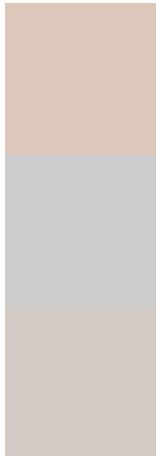
Original Color
14469306

Protanomaly
14076603

Deuteranomaly
14861755

Tritanomaly
14599627

Monochromacy



Original Color
14469306

Achromatopsia
13421772

Achromatomaly
13814725

CSS Examples

Text

The CSS property to change the color of the text to Decimal 14469306 is called "color". The color property can be set on classes, ids or directly on the HTML element.

This example shows how text in the color #DCC8BA looks like.

```
.text, #text, p{  
    color:#DCC8BA  
}
```

If you want to add a text shadow in that color use the text-shadow property, you can generate a text shadow directly with our [CSS Text Shadow Generator](#).

Here you see how black text with a 4 pixel #DCC8BA colored shadow looks like.

```
.shadow{ text-shadow: 4px 4px 2px #DCC8BA
}
```

Border

The CSS property to change the border of an element to Decimal 14469306 is called "border". The border property can be set on classes, ids or directly on the HTML element.

This example shows the color as border, it can be applied via the CSS property "border" or "border-color".

```
.border, #border, table{ border:4px solid
#DCC8BA }
```

If only the border color should be changed use the property `border-color`.

```
.border{ border-color:#DCC8BA }
```

If you want to add a box shadow in that color use:

Here you see how a box with a 4 pixel #DCC8BA colored shadow looks like.

```
.boxshadow{ -moz-box-shadow:4px 4px 4px  
4px #DCC8BA; -webkit-box-shadow:4px 4px  
4px 4px #DCC8BA; box-shadow:4px 4px 4px  
4px #DCC8BA }
```

Background

The CSS property to change the background color of an element to Decimal 14469306 is called "background". The background property can be set on classes, ids or directly on the HTML element.

```
.background, #background, body{  
background:#DCC8BA }
```

If only the background color should be changed can be used:

```
.background{ background-color:#DCC8BA }
```

This example shows the color as background, it is applied via the CSS property "background".

To optimize and compress your CSS code, you can use our [online CSS compressor and optimizer](#) based on csstidy. If you want to create a linear or radial gradient as background or border, check our [CSS Gradient Generator](#).

Hey! You found this booklet interesting? Support Converting Colors with the new Membership Option!

The pro membership hides all ads, plus gives you double the colors in the color bucket, and more awesome pro features!

[Learn more, Memberships starting at \\$2.50/m!](#)

**Follow me
on Twitter!**

@ConvertingColor