

# Converting Colors

Decimal(14469819)

Have a look what the booklet for  
Decimal(14469819) contains.

<b>Decimal(14469819)</b> .....	3
<i><b>Conversions</b></i> .....	4
<i><b>Details</b></i> .....	6
<i><b>Harmonies</b></i> .....	11
<i><b>Previews</b></i> .....	23
<i><b>Color Blindness Simulation</b></i> .....	26
<i><b>CSS Examples</b></i> .....	29

# **Color**

**Decimal(14469819)**

# Conversions

## Conversions Part 1

Format	Color
Hex	DCCABB
RGB	220, 202, 187
RGB Percent	86%, 79%, 73%
CMY	0.1373, 0.2078, 0.2667
CMYK	0.00, 0.08, 0.15, 0.14
HSL	27°, 32%, 80%
HSV	27°, 15%, 86%
XYZ	59.6054, 61.0446, 55.6549
YIQ	205.6720, 15.5430, -0.8490

# Conversions

## Conversions Part 2

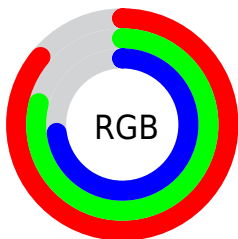
Format	Color
<a href="#">RYB</a>	<a href="#">220, 215, 187</a>
Decimal	<a href="#">14469819</a>
CIELab	<a href="#">82.40, 3.83, 9.75</a>
CIELCh	<a href="#">82, 10.473, 68.572</a>
Yxy	<a href="#">61.0446, 0.3381, 0.3462</a>
Android (android.graphics.Color)	<a href="#">4292659899 (0xFFDCCABB)</a>
YUV	<a href="#">205.6720, -9.2053, 12.5657</a>
Hunter-Lab	<a href="#">78.1310, -0.5534, 12.4578</a>

# Details

The Decimal color **14469819** is a light color, and the websafe version is hex **CCCCCC**. A complement of this color would be **12307932**, and the grayscale version is **13553358**.

A 20% lighter version of the original color is **16777203**, and **10851462** is the 20% darker color. If you saturate the color by 10%, you get **14466725**, and if you desaturate by 10%, it is **14472913**.

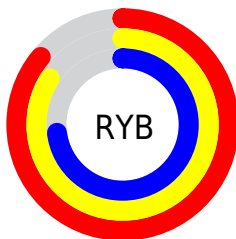
# Distribution



Red (86%)

Green (79%)

Blue (73%)



Red (86%)

Yellow (84%)

Blue (73%)

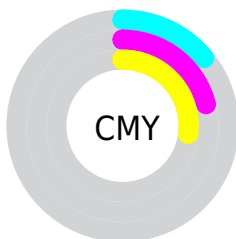


Cyan (0%)

Magenta (8%)

Yellow (15%)

Black (14%)



Cyan (14%)

Magenta (21%)

Yellow (27%)

# Brightness & Saturation Gradients

These gradients show how the Decimal color 14469819 changes by changing the brightness by 10 percent. The first figure shows a shift by +10% for each color and the second figure -10%.

Similar to the brightness gradients but the following saturation gradients show a change of the Decimal color 14469819 by changing the saturation by 10% instead.



 14469819

 14469819

16777215

 12627872

 16777203

 10851462

 9075309

 7430484

 5786173

 4207399

 2760211

 1312000

 0

 14469819

 14469819

 14466725

 14472913

 14463631

 14476007

 14460537

 14479101

 14457443

 14482175

 14454349

 14483455

 14451255

 14448161

 14445067

 14443520

# Harmonies

## Analogous

The Analogous color harmony consists of three colors that are next to each other on the color wheel.



14862273



14469819



13815226

# Triad

The Triadic color harmony groups three colors that are evenly spaced from another and form a triangle on the color wheel.



14469819



11981776



13880028

# Complementary

The Complementary color scheme is a pair of colors which are on the opposite of each other on the color wheel.



14469819



12307932

# Split Complementary

Split-complementary colors differ from the complementary color scheme. The scheme consists of three colors, the original color and two neighbors of the complement color.



13028832



14469819



11915993

# Square

The Square scheme is like the rectangle color scheme, but the four colors are evenly spaced on the color wheel.



14469819



12374726



12308703



14534612

# Rectangle

The Rectangle color scheme consists of four colors that form a rectangle on the color wheel.



14469819



13356988



12308703



13618142



# Sweetspot

The Sweet Spot groups the original color and five complimentary colors.



14469819



16775410



14465997



8420216



0



8421504

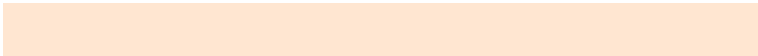


# Same Dimension

The Same Dimension uses a secret algorithm to generate beautiful new colors.



14469819



16770769



14473915



7235683



11357952



3020032

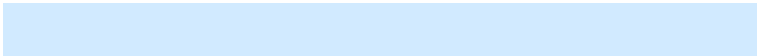


# Inverse Universe

The Inverse Universe completely reimagines the original color for something new.



12307932



13757183



12303836



6515054



24493

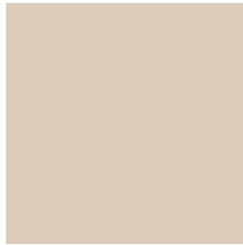


6446



# Previews

## White Background



This preview shows how the Decimal color 14469819 looks on a white background.

## Color Contrast Check

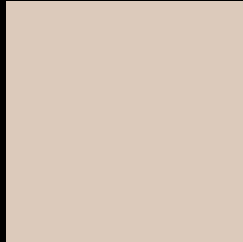
Large Text (above 18pt) WCAG AA × Fail

Any Text WCAG AA × Fail

Large Text (above 18pt) WCAG AAA × Fail

Any Text WCAG AAA × Fail

# Black Background



This preview shows how the Decimal color 14469819 looks on a black background.

## Color Contrast Check

Large Text (above 18pt) WCAG AA ✓ Pass

Any Text WCAG AA ✓ Pass

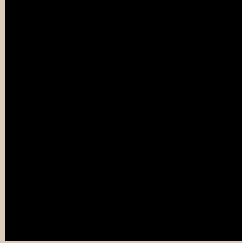
Large Text (above 18pt) WCAG AAA ✓ Pass

Any Text WCAG AAA ✓ Pass

If you want to check with other color combinations, try the [Color Contrast Checker](#).



## Decimal 14469819 Background



This preview shows how black text looks on a background with the Decimal color 14469819.



This preview shows how white text looks on a background with the Decimal color 14469819.

# Color Blindness Simulation

Color vision deficiency is a very complex topic, and I could not describe the different causes any better than Wikipedia does, so if you want to learn more, you should check out their [article about color blindness](#).

## Dichromacy





**Tritanopia**  
14730966

# Trichromacy



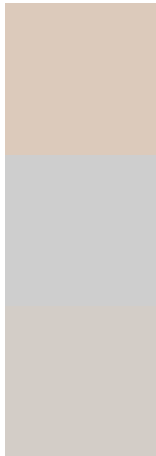
**Original Color**  
14469819

**Protanomaly**  
14207932

**Deuteranomaly**  
14927804

**Tritanomaly**  
14665676

# Monochromacy



**Original Color**  
14469819

**Achromatopsia**  
13553358

**Achromatomaly**  
13880775

# CSS Examples

## Text

The CSS property to change the color of the text to Decimal 14469819 is called "color". The color property can be set on classes, ids or directly on the HTML element.

This example shows how text in the color #DCCABB looks like.

```
.text, #text, p{  
  color:#DCCABB  
}
```

If you want to add a text shadow in that color use the text-shadow property, you can generate a text shadow directly with our [CSS Text Shadow Generator](#).

Here you see how black text with a 4 pixel #DCCABB colored shadow looks like.

```
.shadow{ text-shadow: 4px 4px 2px #DCCABB
}
```

## Border

The CSS property to change the border of an element to Decimal 14469819 is called "border". The border property can be set on classes, ids or directly on the HTML element.

This example shows the color as border, it can be applied via the CSS property "border" or "border-color".

```
.border, #border, table{ border:4px solid
#DCCABB }
```

If only the border color should be changed use the property `border-color`.

```
.border{ border-color:#DCCABB }
```

If you want to add a box shadow in that color use:

Here you see how a box with a 4 pixel #DCCABB colored shadow looks like.

```
.boxshadow{ -moz-box-shadow:4px 4px 4px  
4px #DCCABB; -webkit-box-shadow:4px 4px  
4px 4px #DCCABB; box-shadow:4px 4px 4px  
4px #DCCABB }
```

# Background

The CSS property to change the background color of an element to Decimal 14469819 is called "background". The background property can be set on classes, ids or directly on the HTML element.

```
.background, #background, body{  
background:#DCCABB }
```

If only the background color should be changed can be used:

```
.background{ background-color:#DCCABB }
```

This example shows the color as background, it is applied via the CSS property "background".

To optimize and compress your CSS code, you can use our [online CSS compressor and optimizer](#) based on csstidy. If you want to create a linear or radial gradient as background or border, check our [CSS Gradient Generator](#).



Hey! You found this booklet interesting? Support Converting Colors with the new Membership Option!

The pro membership hides all ads, plus gives you double the colors in the color bucket, and more awesome pro features!

**[Learn more, Memberships starting at \\$2.50/m!](#)**

**Follow me  
on Twitter!**

@ConvertingColor