

Converting Colors

Decimal(14469823)

Have a look what the booklet for
Decimal(14469823) contains.

Decimal(14469823)	3
<i>Conversions</i>	4
<i>Details</i>	6
<i>Harmonies</i>	11
<i>Previews</i>	23
<i>Color Blindness Simulation</i>	26
<i>CSS Examples</i>	29

Color

Decimal(14469823)

Conversions

Conversions Part 1

Format	Color
Hex	DCCABF
RGB	220, 202, 191
RGB Percent	86%, 79%, 75%
CMY	0.1373, 0.2078, 0.2510
CMYK	0.00, 0.08, 0.13, 0.14
HSL	23°, 29%, 81%
HSV	23°, 13%, 86%
XYZ	60.0397, 61.2183, 57.9421
YIQ	206.1280, 14.2590, 0.3950

Conversions

Conversions Part 2

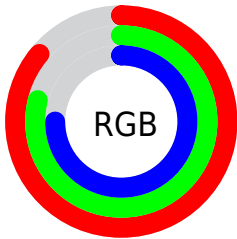
Format	Color
RYP	220, 209, 191
Decimal	14469823
CIELab	82.50, 4.46, 7.75
CIElCh	82, 8.941, 60.070
Yxy	61.2183, 0.3350, 0.3416
Android (android.graphics.Color)	4292659903 (0xFFDCCABF)
YUV	206.1280, -7.4581, 12.1657
Hunter-Lab	78.2421, 0.0497, 10.8624

Details

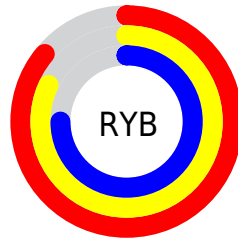
The Decimal color **14469823** is a light color, and the websafe version is hex **CCCCCC**. A complement of this color would be **12571100**, and the grayscale version is **13553358**.

A 20% lighter version of the original color is **16777207**, and **10851466** is the 20% darker color. If you saturate the color by 10%, you get **14466217**, and if you desaturate by 10%, it is **14473429**.

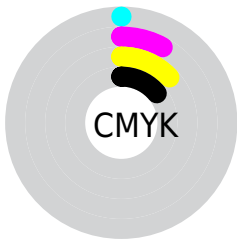
Distribution



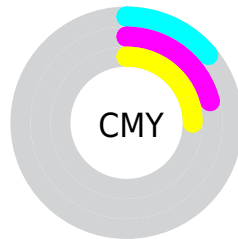
- Red (86%)
- Green (79%)
- Blue (75%)



- Red (86%)
- Yellow (82%)
- Blue (75%)



- Cyan (0%)
- Magenta (8%)
- Yellow (13%)
- Black (14%)



- Cyan (14%)
- Magenta (21%)
- Yellow (25%)

Brightness & Saturation Gradients

These gradients show how the Decimal color 14469823 changes by changing the brightness by 10 percent. The first figure shows a shift by +10% for each color and the second figure -10%.

Similar to the brightness gradients but the following saturation gradients show a change of the Decimal color 14469823 by changing the saturation by 10% instead.

 14469823

 14469823

16777215

 12627876

 16777207

 10851466

 9075312

 7430488

 5786176

 4207402

 2760214

 1443072

 0

 14469823

 14469823

 14466217

 14473429

 14462867

 14476779

 14459261

 14480383

 14455655

 14483455

 14452305

 14448699

 14445093

 14441743

 14439168

Harmonies

Analogous

The Analogous color harmony consists of three colors that are next to each other on the color wheel.



14731461



14469823



13946301

Triad

The Triadic color harmony groups three colors that are evenly spaced from another and form a triangle on the color wheel.



14469823



12309197



13618140

Complementary

The Complementary color scheme is a pair of colors which are on the opposite of each other on the color wheel.



14469823



12571100

Split Complementary

Split-complementary colors differ from the complementary color scheme. The scheme consists of three colors, the original color and two neighbors of the complement color.



12963550



14469823



12178133

Square

The Square scheme is like the rectangle color scheme, but the four colors are evenly spaced on the color wheel.



14469823



12702149



12374235



14272982

Rectangle

The Rectangle color scheme consists of four colors that form a rectangle on the color wheel.



14469823



13553342



12374235



13421789

Sweetspot

The Sweet Spot groups the original color and five complimentary colors.



14469823



16775669



14467025



8420473



0



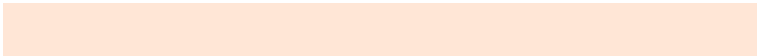
8421504

Same Dimension

The Same Dimension uses a secret algorithm to generate beautiful new colors.



14469823



16770774



14473407



7235427



11354624



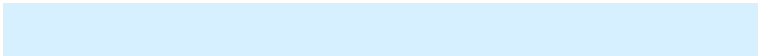
3019008

Inverse Universe

The Inverse Universe completely reimagines the original color for something new.



12571100



14086399



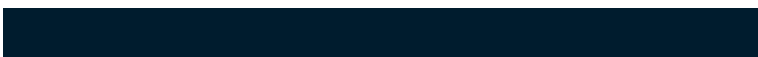
12567516



6515054



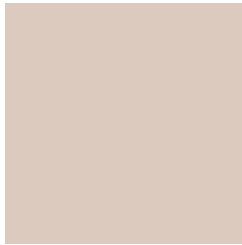
27821



7214

Previews

White Background



This preview shows how the Decimal color 14469823 looks on a white background.

Color Contrast Check

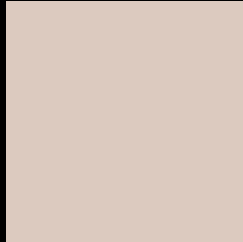
Large Text (above 18pt) WCAG AA × Fail

Any Text WCAG AA × Fail

Large Text (above 18pt) WCAG AAA × Fail

Any Text WCAG AAA × Fail

Black Background



This preview shows how the Decimal color 14469823 looks on a black background.

Color Contrast Check

Large Text (above 18pt) WCAG AA ✓ Pass

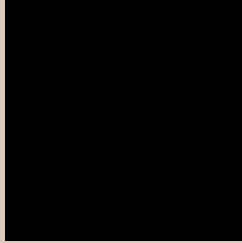
Any Text WCAG AA ✓ Pass

Large Text (above 18pt) WCAG AAA ✓ Pass

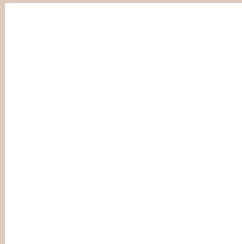
Any Text WCAG AAA ✓ Pass

If you want to check with other color combinations, try the [Color Contrast Checker](#).

Decimal 14469823 Background



This preview shows how black text looks on a background with the Decimal color 14469823.

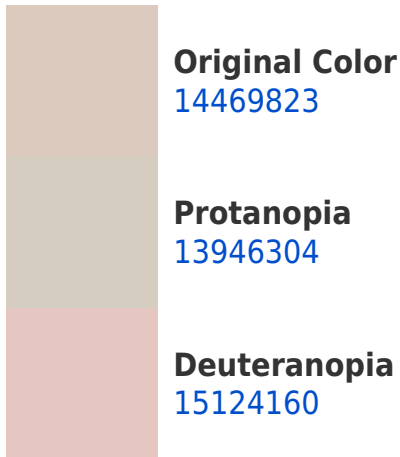



This preview shows how white text looks on a background with the Decimal color 14469823.

Color Blindness Simulation

Color vision deficiency is a very complex topic, and I could not describe the different causes any better than Wikipedia does, so if you want to learn more, you should check out their [article about color blindness](#).

Dichromacy





Tritanopia
14665686

Trichromacy



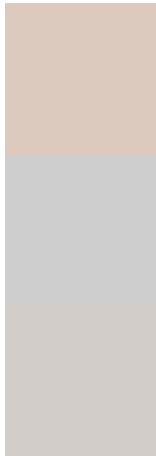
Original Color
14469823

Protanomaly
14142656

Deuteranomaly
14862272

Tritanomaly
14600398

Monochromacy



Original Color
14469823

Achromatopsia
13553358

Achromatomaly
13880777

CSS Examples

Text

The CSS property to change the color of the text to Decimal 14469823 is called "color". The color property can be set on classes, ids or directly on the HTML element.

This example shows how text in the color #DCCABF looks like.

```
.text, #text, p{  
    color:#DCCABF  
}
```

If you want to add a text shadow in that color use the text-shadow property, you can generate a text shadow directly with our [CSS Text Shadow Generator](#).

Here you see how black text with a 4 pixel #DCCABF colored shadow looks like.

```
.shadow{ text-shadow: 4px 4px 2px #DCCABF
}
```

Border

The CSS property to change the border of an element to Decimal 14469823 is called "border". The border property can be set on classes, ids or directly on the HTML element.

This example shows the color as border, it can be applied via the CSS property "border" or "border-color".

```
.border, #border, table{ border:4px solid
#DCCABF }
```

If only the border color should be changed use the property `border-color`.

```
.border{ border-color:#DCCABF }
```

If you want to add a box shadow in that color use:

Here you see how a box with a 4 pixel #DCCABF colored shadow looks like.

```
.boxshadow{ -moz-box-shadow:4px 4px 4px  
4px #DCCABF; -webkit-box-shadow:4px 4px  
4px 4px #DCCABF; box-shadow:4px 4px 4px  
4px #DCCABF }
```

Background

The CSS property to change the background color of an element to Decimal 14469823 is called "background". The background property can be set on classes, ids or directly on the HTML element.

```
.background, #background, body{  
background:#DCCABF }
```

If only the background color should be changed can be used:

```
.background{ background-color:#DCCABF }
```

This example shows the color as background, it is applied via the CSS property "background".

To optimize and compress your CSS code, you can use our [online CSS compressor and optimizer](#) based on csstidy. If you want to create a linear or radial gradient as background or border, check our [CSS Gradient Generator](#).

Hey! You found this booklet interesting? Support Converting Colors with the new Membership Option!

The pro membership hides all ads, plus gives you double the colors in the color bucket, and more awesome pro features!

[Learn more, Memberships starting at \\$2.50/m!](#)

**Follow me
on Twitter!**

@ConvertingColor