

Converting Colors

Decimal(14499705)

Have a look what the booklet for
Decimal(14499705) contains.

| | |
|--|----|
| Decimal(14499705) | 3 |
| <i>Conversions</i> | 4 |
| <i>Details</i> | 6 |
| <i>Harmonies</i> | 11 |
| <i>Previews</i> | 23 |
| <i>Color Blindness Simulation</i> | 26 |
| <i>CSS Examples</i> | 29 |

Color

Decimal(14499705)

Conversions

Conversions Part 1

| Format | Color |
|---------------|----------------------------|
| Hex | DD3F79 |
| RGB | 221, 63, 121 |
| RGB Percent | 87%, 25%, 47% |
| CMY | 0.1333, 0.7529, 0.5255 |
| CMYK | 0.00, 0.71, 0.45, 0.13 |
| HSL | 338°, 70%, 56% |
| HSV | 338°, 71%, 87% |
| XYZ | 35.0475, 20.3076, 20.1617 |
| YIQ | 116.8540, 75.5500, 51.5340 |

Conversions

Conversions Part 2

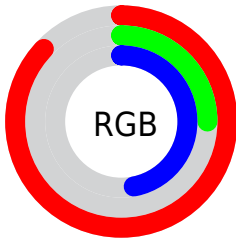
| Format | Color |
|-------------------------------------|------------------------------|
| R_{YB} | 221, 63, 121 |
| Decimal | 14499705 |
| CIE _{Lab} | 52.18, 64.65, 3.56 |
| CIE _{LCh} | 52, 64.749, 3.154 |
| Yxy | 20.3076, 0.4641, 0.2689 |
| Android (android.graphics.Color) | 4292689785 (0xFFDD3F79) |
| YUV | 116.8540, 2.0440, 91.3360 |
| Hunter-Lab | 45.0640, 59.9623, 5.0183 |

Details

The Decimal color **14499705** is a dark color, and the websafe version is hex **CC3366**. The color can be described as dark muted rose. A complement of this color would be **4185507**, and the grayscale version is **7697781**.

A 20% lighter version of the original color is **16743085**, and **10485833** is the 20% darker color. If you saturate the color by 10%, you get **14494059**, and if you desaturate by 10%, it is **14505351**.

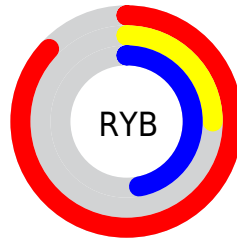
Distribution



Red (87%)

Green (25%)

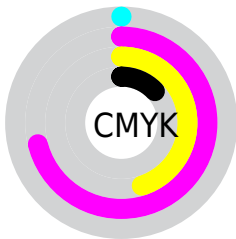
Blue (47%)



Red (87%)

Yellow (25%)

Blue (47%)

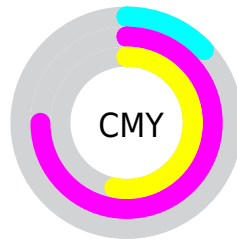


Cyan (0%)

Magenta (71%)

Yellow (45%)

Black (13%)



Cyan (13%)

Magenta (75%)

Yellow (53%)

Brightness & Saturation Gradients

These gradients show how the Decimal color 14499705 changes by changing the brightness by 10 percent. The first figure shows a shift by +10% for each color and the second figure -10%.

Similar to the brightness gradients but the following saturation gradients show a change of the Decimal color 14499705 by changing the saturation by 10% instead.

 14499705  14499705

16777215  12524128

 16743085  10485833

 16750536  8585267

 16757732  6619166

 16765439  4849667

 16772863  2818049

 0

 14499705  14499705

 14494059  14505351

14488413

14510997

14483537

14516643

14522289

14528191

14533837

14539483

14545129

14548983

Harmonies

Analogous

The Analogous color harmony consists of three colors that are next to each other on the color wheel.



12799920



14499705



14175555

Triad

The Triadic color harmony groups three colors that are evenly spaced from another and form a triangle on the color wheel.



14499705



5736968



36832

Complementary

The Complementary color scheme is a pair of colors which are on the opposite of each other on the color wheel.



14499705



4185507

Split Complementary

Split-complementary colors differ from the complementary color scheme. The scheme consists of three colors, the original color and two neighbors of the complement color.



38328



14499705



37447

Square

The Square scheme is like the rectangle color scheme, but the four colors are evenly spaced on the color wheel.



14499705



9468928



38273



33260

Rectangle

The Rectangle color scheme consists of four colors that form a rectangle on the color wheel.



14499705



13131297



38273



37589

Sweetspot

The Sweet Spot groups the original color and five complimentary colors.



14499705



16763357



10502109



8413291



0



8421504

Same Dimension

The Same Dimension uses a secret algorithm to generate beautiful new colors.



14499705



16721012



14504255



7234407



11337792



3014673

Inverse Universe

The Inverse Universe completely reimagines the original color for something new.



14499705



16721012



4180957



7234407



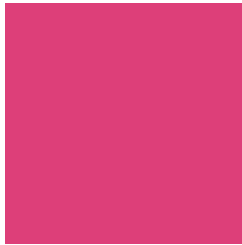
11337792



3014673

Previews

White Background



This preview shows how the Decimal color 14499705 looks on a white background.

Color Contrast Check

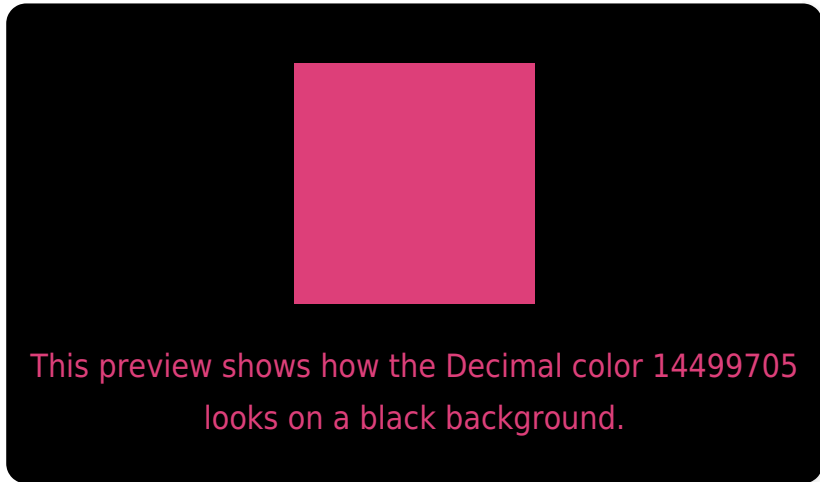
Large Text (above 18pt) WCAG AA ✓ Pass

Any Text WCAG AA × Fail

Large Text (above 18pt) WCAG AAA × Fail

Any Text WCAG AAA × Fail

Black Background



Color Contrast Check

Large Text (above 18pt) WCAG AA ✓ Pass

Any Text WCAG AA ✓ Pass

Large Text (above 18pt) WCAG AAA ✓ Pass

Any Text WCAG AAA × Fail

If you want to check with other color combinations, try the [Color Contrast Checker](#).

Decimal 14499705 Background



This preview shows how black text looks on a background with the Decimal color 14499705.



This preview shows how white text looks on a background with the Decimal color 14499705.

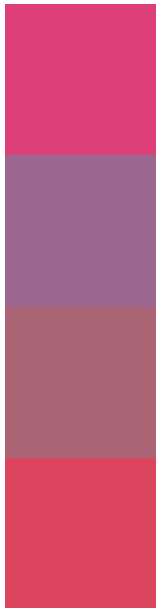
Color Blindness Simulation

Color vision deficiency is a very complex topic, and I could not describe the different causes any better than Wikipedia does, so if you want to learn more, you should check out their [article about color blindness](#).

Dichromacy



Trichromacy



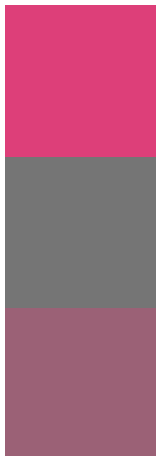
Original Color
14499705

Protanomaly
10184336

Deuteranomaly
11166836

Tritanomaly
14370141

Monochromacy



Original Color
14499705

Achromatopsia
7697781

Achromatomaly
10183030

CSS Examples

Text

The CSS property to change the color of the text to Decimal 14499705 is called "color". The color property can be set on classes, ids or directly on the HTML element.

This example shows how text in the color #DD3F79 looks like.

```
.text, #text, p{  
  color:#DD3F79  
}
```

If you want to add a text shadow in that color use the text-shadow property, you can generate a text shadow directly with our [CSS Text Shadow Generator](#).

Here you see how black text with a 4 pixel #DD3F79 colored shadow looks like.

```
.shadow{ text-shadow: 4px 4px 2px #DD3F79
}
```

Border

The CSS property to change the border of an element to Decimal 14499705 is called "border". The border property can be set on classes, ids or directly on the HTML element.

This example shows the color as border, it can be applied via the CSS property "border" or "border-color".

```
.border, #border, table{ border:4px solid
#DD3F79 }
```

If only the border color should be changed use the property `border-color`.

```
.border{ border-color:#DD3F79 }
```

If you want to add a box shadow in that color use:

Here you see how a box with a 4 pixel #DD3F79 colored shadow looks like.

```
.boxshadow{ -moz-box-shadow:4px 4px 4px  
4px #DD3F79; -webkit-box-shadow:4px 4px  
4px 4px #DD3F79; box-shadow:4px 4px 4px  
4px #DD3F79 }
```

Background

The CSS property to change the background color of an element to Decimal 14499705 is called "background". The background property can be set on classes, ids or directly on the HTML element.

```
.background, #background, body{  
background:#DD3F79 }
```

If only the background color should be changed can be used:

```
.background{ background-color:#DD3F79 }
```

This example shows the color as background, it is applied via the CSS property "background".

To optimize and compress your CSS code, you can use our [online CSS compressor and optimizer](#) based on csstidy. If you want to create a linear or radial gradient as background or border, check our [CSS Gradient Generator](#).

Hey! You found this booklet interesting? Support Converting Colors with the new Membership Option!

The pro membership hides all ads, plus gives you double the colors in the color bucket, and more awesome pro features!

[Learn more, Memberships starting at \\$2.50/m!](#)

**Follow me
on Twitter!**

@ConvertingColor