

Converting Colors

Decimal(14506618)

Have a look what the booklet for
Decimal(14506618) contains.

Decimal(14506618)	3
<i>Conversions</i>	4
<i>Details</i>	6
<i>Harmonies</i>	11
<i>Previews</i>	23
<i>Color Blindness Simulation</i>	26
<i>CSS Examples</i>	29

Color

Decimal(14506618)

Conversions

Conversions Part 1

Format	Color
Hex	DD5A7A
RGB	221, 90, 122
RGB Percent	87%, 35%, 48%
CMY	0.1333, 0.6471, 0.5216
CMYK	0.00, 0.59, 0.45, 0.13
HSL	345°, 66%, 61%
HSV	345°, 59%, 87%
XYZ	36.9878, 24.0896, 21.1126
YIQ	132.8170, 67.8040, 37.7240

Conversions

Conversions Part 2

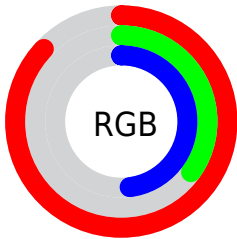
Format	Color
R_{YB}	221, 90, 122
Decimal	14506618
CIE Lab	56.18, 53.93, 8.68
CIE LCh	56, 54.628, 9.147
Yxy	24.0896, 0.4500, 0.2931
Android (android.graphics.Color)	4292696698 (0xFFDD5A7A)
YUV	132.8170, -5.3328, 77.3365
Hunter-Lab	49.0812, 48.6264, 8.8528

Details

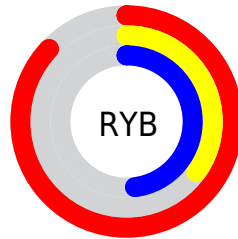
The Decimal color **14506618** is a dark color, and the websafe version is hex **CC3366**. The color can be described as middle muted rose. A complement of this color would be **5955005**, and the grayscale version is **8750469**.

A 20% lighter version of the original color is **16748974**, and **10559306** is the 20% darker color. If you saturate the color by 10%, you get **14500969**, and if you desaturate by 10%, it is **14512267**.

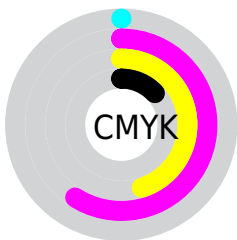
Distribution



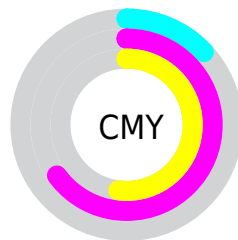
- Red (87%)
- Green (35%)
- Blue (48%)



- Red (87%)
- Yellow (35%)
- Blue (48%)



- Cyan (0%)
- Magenta (59%)
- Yellow (45%)
- Black (13%)



- Cyan (13%)
- Magenta (65%)
- Yellow (52%)

Brightness & Saturation Gradients

These gradients show how the Decimal color 14506618 changes by changing the brightness by 10 percent. The first figure shows a shift by +10% for each color and the second figure -10%.

Similar to the brightness gradients but the following saturation gradients show a change of the Decimal color 14506618 by changing the saturation by 10% instead.

 14506618

 14506618

16777215

 12533345

 16748974

 10559306

 16756170

 8650803

 16763622

 6750239

 16771071

 4915205

 3145730

 0

 14506618

 14506618

 14500969

 14512267

14495321

14517915

14489672

14523564

14484023

14529213

14483510

14535118

14540766

14546415

14548991

Harmonies

Analogous

The Analogous color harmony consists of three colors that are next to each other on the color wheel.



13328810



14506618



13985101

Triad

The Triadic color harmony groups three colors that are evenly spaced from another and form a triangle on the color wheel.



14506618



6264120



38367

Complementary

The Complementary color scheme is a pair of colors which are on the opposite of each other on the color wheel.



14506618



5955005

Split Complementary

Split-complementary colors differ from the complementary color scheme. The scheme consists of three colors, the original color and two neighbors of the complement color.



40130



14506618



39779

Square

The Square scheme is like the rectangle color scheme, but the four colors are evenly spaced on the color wheel.



14506618



9603358



40596



4163557

Rectangle

The Rectangle color scheme consists of four colors that form a rectangle on the color wheel.



14506618



12939828



40596



39128

Sweetspot

The Sweet Spot groups the original color and five complimentary colors.



14506618



16765404



12344029



8414058



0



8421504

Same Dimension

The Same Dimension uses a secret algorithm to generate beautiful new colors.



14506618



16730742



14515034



7234405



11337770



3014667

Inverse Universe

The Inverse Universe completely reimagines the original color for something new.



14506618



16730742



5946589



7234405



11337770



3014667

Previews

White Background



This preview shows how the Decimal color 14506618 looks on a white background.

Color Contrast Check

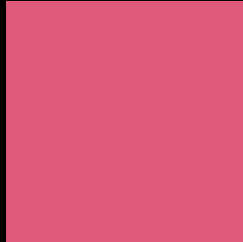
Large Text (above 18pt) WCAG AA ✓ Pass

Any Text WCAG AA × Fail

Large Text (above 18pt) WCAG AAA × Fail

Any Text WCAG AAA × Fail

Black Background



This preview shows how the Decimal color 14506618 looks on a black background.

Color Contrast Check

Large Text (above 18pt) WCAG AA ✓ Pass

Any Text WCAG AA ✓ Pass

Large Text (above 18pt) WCAG AAA ✓ Pass

Any Text WCAG AAA × Fail

If you want to check with other color combinations, try the [Color Contrast Checker](#).

Decimal 14506618 Background



This preview shows how black text looks on a background with the Decimal color 14506618.

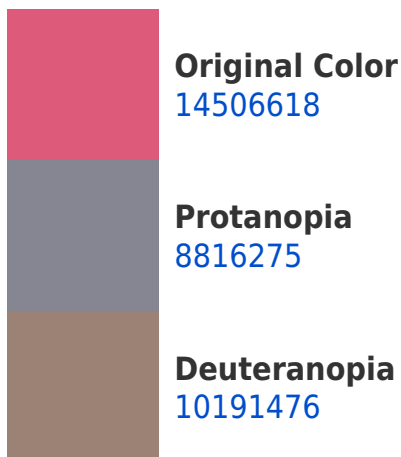



This preview shows how white text looks on a background with the Decimal color 14506618.

Color Blindness Simulation

Color vision deficiency is a very complex topic, and I could not describe the different causes any better than Wikipedia does, so if you want to learn more, you should check out their [article about color blindness](#).

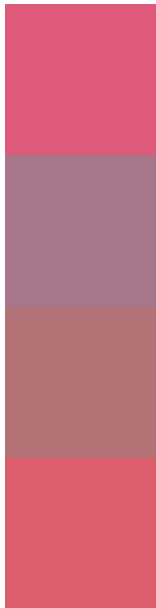
Dichromacy





Tritanopia
14442084

Trichromacy



Original Color
14506618

Protanomaly
10909322

Deuteranomaly
11760502

Tritanomaly
14441836

Monochromacy



Original Color
14506618

Achromatopsia
8750469

Achromatomaly
10843521

CSS Examples

Text

The CSS property to change the color of the text to Decimal 14506618 is called "color". The color property can be set on classes, ids or directly on the HTML element.

This example shows how text in the color #DD5A7A looks like.

```
.text, #text, p{  
    color:#DD5A7A  
}
```

If you want to add a text shadow in that color use the text-shadow property, you can generate a text shadow directly with our [CSS Text Shadow Generator](#).

Here you see how black text with a 4 pixel #DD5A7A colored shadow looks like.

```
.shadow{ text-shadow: 4px 4px 2px #DD5A7A
}
```

Border

The CSS property to change the border of an element to Decimal 14506618 is called "border". The border property can be set on classes, ids or directly on the HTML element.

This example shows the color as border, it can be applied via the CSS property "border" or "border-color".

```
.border, #border, table{ border:4px solid
#DD5A7A }
```

If only the border color should be changed use the property `border-color`.

```
.border{ border-color:#DD5A7A }
```

If you want to add a box shadow in that color use:

Here you see how a box with a 4 pixel #DD5A7A colored shadow looks like.

```
.boxshadow{ -moz-box-shadow:4px 4px 4px  
4px #DD5A7A; -webkit-box-shadow:4px 4px  
4px 4px #DD5A7A; box-shadow:4px 4px 4px  
4px #DD5A7A }
```

Background

The CSS property to change the background color of an element to Decimal 14506618 is called "background". The background property can be set on classes, ids or directly on the HTML element.

```
.background, #background, body{  
background:#DD5A7A }
```

If only the background color should be changed can be used:

```
.background{ background-color:#DD5A7A }
```

This example shows the color as background, it is applied via the CSS property "background".

To optimize and compress your CSS code, you can use our [online CSS compressor and optimizer](#) based on csstidy. If you want to create a linear or radial gradient as background or border, check our [CSS Gradient Generator](#).

Hey! You found this booklet interesting? Support Converting Colors with the new Membership Option!

The pro membership hides all ads, plus gives you double the colors in the color bucket, and more awesome pro features!

[Learn more, Memberships starting at \\$2.50/m!](#)

**Follow me
on Twitter!**

@ConvertingColor