

Converting Colors

Decimal(14510736)

Have a look what the booklet for
Decimal(14510736) contains.

Decimal(14510736)	3
<i>Conversions</i>	4
<i>Details</i>	6
<i>Harmonies</i>	11
<i>Previews</i>	23
<i>Color Blindness Simulation</i>	26
<i>CSS Examples</i>	29

Color

Decimal(14510736)

Conversions

Conversions Part 1

Format	Color
Hex	DD6A90
RGB	221, 106, 144
RGB Percent	87%, 42%, 56%
CMY	0.1333, 0.5843, 0.4353
CMYK	0.00, 0.52, 0.35, 0.13
HSL	340°, 63%, 64%
HSV	340°, 52%, 87%
XYZ	40.0069, 27.6938, 29.6224
YIQ	144.7170, 56.3420, 36.1980

Conversions

Conversions Part 2

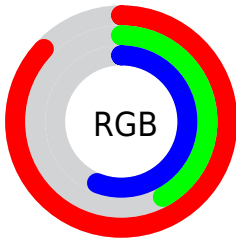
Format	Color
RYB	221, 106, 144
Decimal	14510736
CIELab	59.61, 48.81, 0.77
CIELCh	60, 48.812, 0.904
Yxy	27.6938, 0.4111, 0.2846
Android (android.graphics.Color)	4292700816 (0xFFDD6A90)
YUV	144.7170, -0.3535, 66.9002
Hunter-Lab	52.6249, 43.6068, 3.4633

Details

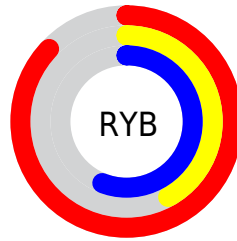
The Decimal color **14510736** is a light color, and the websafe version is hex **CC6699**. A complement of this color would be **7003575**, and the grayscale version is **9539985**.

A 20% lighter version of the original color is **16752838**, and **10695774** is the 20% darker color. If you saturate the color by 10%, you get **14505089**, and if you desaturate by 10%, it is **14516383**.

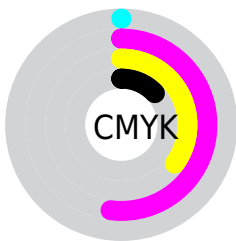
Distribution



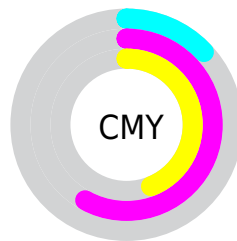
- Red (87%)
- Green (42%)
- Blue (56%)



- Red (87%)
- Yellow (42%)
- Blue (56%)



- Cyan (0%)
- Magenta (52%)
- Yellow (35%)
- Black (13%)



- Cyan (13%)
- Magenta (58%)
- Yellow (44%)

Brightness & Saturation Gradients

These gradients show how the Decimal color 14510736 changes by changing the brightness by 10 percent. The first figure shows a shift by +10% for each color and the second figure -10%.

Similar to the brightness gradients but the following saturation gradients show a change of the Decimal color 14510736 by changing the saturation by 10% instead.

 14510736

 14510736

16777215

 12603254

 16752838

 10695774

 16760290

 8787526

 16767486

 6946864

 16774911

 5177371

 3604482

 655360

 0

 14510736

 14510736

 14505089

 14516383

 14499442

 14522030

 14493796

 14527676

 14488149

 14533323

 14483529

 14539226

 14544873

 14548984

 14548991

Harmonies

Analogous

The Analogous color harmony consists of three colors that are next to each other on the color wheel.



12940218



14510736



14511974

Triad

The Triadic color harmony groups three colors that are evenly spaced from another and form a triangle on the color wheel.



14510736



8100418



40922

Complementary

The Complementary color scheme is a pair of colors which are on the opposite of each other on the color wheel.



14510736



7003575

Split Complementary

Split-complementary colors differ from the complementary color scheme. The scheme consists of three colors, the original color and two neighbors of the complement color.



42170



14510736



4235876

Square

The Square scheme is like the rectangle color scheme, but the four colors are evenly spaced on the color wheel.



14510736



10980917



42384



3904741

Rectangle

The Rectangle color scheme consists of four colors that form a rectangle on the color wheel.



14510736



13728078



42384



41425

Sweetspot

The Sweet Spot groups the original color and five complimentary colors.



14510736



16766692



12020445



8415087



0



8421504

Same Dimension

The Same Dimension uses a secret algorithm to generate beautiful new colors.



14510736



16736661



14515562



7234406



11337785



3014671

Inverse Universe

The Inverse Universe completely reimagines the original color for something new.



14510736



16736661



6998749



7234406



11337785



3014671

Previews

White Background



This preview shows how the Decimal color 14510736 looks on a white background.

Color Contrast Check

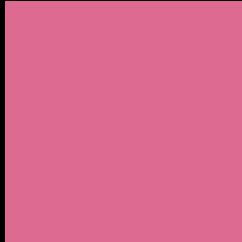
Large Text (above 18pt) WCAG AA ✓ Pass

Any Text WCAG AA × Fail

Large Text (above 18pt) WCAG AAA × Fail

Any Text WCAG AAA × Fail

Black Background



This preview shows how the Decimal color 14510736 looks on a black background.

Color Contrast Check

Large Text (above 18pt) WCAG AA ✓ Pass

Any Text WCAG AA ✓ Pass

Large Text (above 18pt) WCAG AAA ✓ Pass

Any Text WCAG AAA × Fail

If you want to check with other color combinations, try the [Color Contrast Checker](#).

Decimal 14510736 Background



This preview shows how black text looks on a background with the Decimal color 14510736.

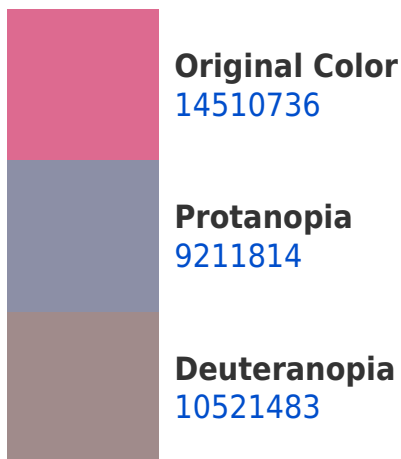



This preview shows how white text looks on a background with the Decimal color 14510736.

Color Blindness Simulation

Color vision deficiency is a very complex topic, and I could not describe the different causes any better than Wikipedia does, so if you want to learn more, you should check out their [article about color blindness](#).

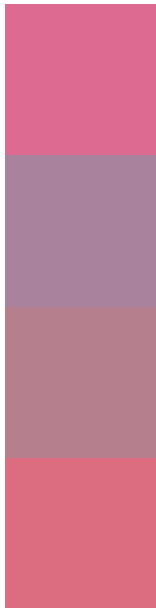
Dichromacy





Tritanopia
14380919

Trichromacy



Original Color
14510736

Protanomaly
11109022

Deuteranomaly
11960205

Tritanomaly
14445952

Monochromacy



Original Color
14510736

Achromatopsia
9539985

Achromatomaly
11371409

CSS Examples

Text

The CSS property to change the color of the text to Decimal 14510736 is called "color". The color property can be set on classes, ids or directly on the HTML element.

This example shows how text in the color #DD6A90 looks like.

```
.text, #text, p{  
    color:#DD6A90  
}
```

If you want to add a text shadow in that color use the text-shadow property, you can generate a text shadow directly with our [CSS Text Shadow Generator](#).

Here you see how black text with a 4 pixel #DD6A90 colored shadow looks like.

```
.shadow{ text-shadow: 4px 4px 2px #DD6A90
}
```

Border

The CSS property to change the border of an element to Decimal 14510736 is called "border". The border property can be set on classes, ids or directly on the HTML element.

This example shows the color as border, it can be applied via the CSS property "border" or "border-color".

```
.border, #border, table{ border:4px solid
#DD6A90 }
```

If only the border color should be changed use the property `border-color`.

```
.border{ border-color:#DD6A90 }
```

If you want to add a box shadow in that color use:

Here you see how a box with a 4 pixel #DD6A90 colored shadow looks like.

```
.boxshadow{ -moz-box-shadow:4px 4px 4px  
4px #DD6A90; -webkit-box-shadow:4px 4px  
4px 4px #DD6A90; box-shadow:4px 4px 4px  
4px #DD6A90 }
```

Background

The CSS property to change the background color of an element to Decimal 14510736 is called "background". The background property can be set on classes, ids or directly on the HTML element.

```
.background, #background, body{  
background:#DD6A90 }
```

If only the background color should be changed can be used:

```
.background{ background-color:#DD6A90 }
```

This example shows the color as background, it is applied via the CSS property "background".

To optimize and compress your CSS code, you can use our [online CSS compressor and optimizer](#) based on csstidy. If you want to create a linear or radial gradient as background or border, check our [CSS Gradient Generator](#).

Hey! You found this booklet interesting? Support Converting Colors with the new Membership Option!

The pro membership hides all ads, plus gives you double the colors in the color bucket, and more awesome pro features!

[Learn more, Memberships starting at \\$2.50/m!](#)

**Follow me
on Twitter!**

@ConvertingColor