

Converting Colors

Decimal(14512275)

Have a look what the booklet for
Decimal(14512275) contains.

Decimal(14512275)	3
<i>Conversions</i>	4
<i>Details</i>	6
<i>Harmonies</i>	11
<i>Previews</i>	23
<i>Color Blindness Simulation</i>	26
<i>CSS Examples</i>	29

Color

Decimal(14512275)

Conversions

Conversions Part 1

Format	Color
Hex	DD7093
RGB	221, 112, 147
RGB Percent	87%, 44%, 58%
CMY	0.1333, 0.5608, 0.4235
CMYK	0.00, 0.49, 0.33, 0.13
HSL	341°, 62%, 65%
HSV	341°, 49%, 87%
XYZ	40.8794, 29.0671, 31.0597
YIQ	148.5810, 53.7290, 33.9930

Conversions

Conversions Part 2

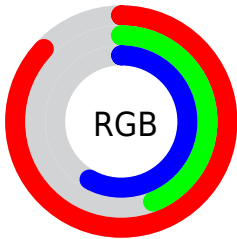
Format	Color
R _Y B	221, 112, 147
Decimal	14512275
CIE Lab	60.84, 46.21, 0.83
CIE LCh	61, 46.218, 1.026
Yxy	29.0671, 0.4047, 0.2878
Android (android.graphics.Color)	4292702355 (0xFFDD7093)
YUV	148.5810, -0.7794, 63.5115
Hunter-Lab	53.9139, 40.9957, 3.5829

Details

The Decimal color **14512275** is a light color, and the websafe version is hex **CC6699**. A complement of this color would be **7396794**, and the grayscale version is **9803157**.

A 20% lighter version of the original color is **16754377**, and **10697569** is the 20% darker color. If you saturate the color by 10%, you get **14506628**, and if you desaturate by 10%, it is **14517922**.

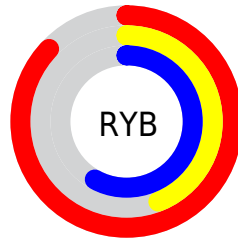
Distribution



Red (87%)

Green (44%)

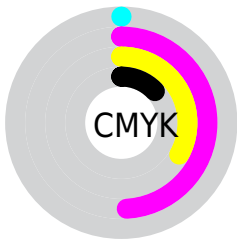
Blue (58%)



Red (87%)

Yellow (44%)

Blue (58%)

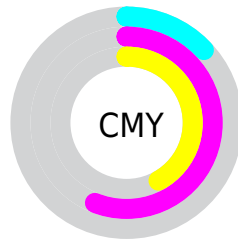


Cyan (0%)

Magenta (49%)

Yellow (33%)

Black (13%)



Cyan (13%)

Magenta (56%)

Yellow (42%)

Brightness & Saturation Gradients

These gradients show how the Decimal color 14512275 changes by changing the brightness by 10 percent. The first figure shows a shift by +10% for each color and the second figure -10%.

Similar to the brightness gradients but the following saturation gradients show a change of the Decimal color 14512275 by changing the saturation by 10% instead.

 14512275

 14512275

16777215

 12605049

 16754377

 10697569

 16761573

 8855369

 16769023

 7012403

 16776447

 5177374

 3670019

 1048576

 0

 14512275

 14512275

14506628

14517922

14500981

14523569

14495334

14529216

14489687

14534863

14483784

14540766

14483527

14546413

14548988

14548991

Harmonies

Analogous

The Analogous color harmony consists of three colors that are next to each other on the color wheel.



13007035



14512275



14513515

Triad

The Triadic color harmony groups three colors that are evenly spaced from another and form a triangle on the color wheel.



14512275



8428874



41433

Complementary

The Complementary color scheme is a pair of colors which are on the opposite of each other on the color wheel.



14512275



7396794

Split Complementary

Split-complementary colors differ from the complementary color scheme. The scheme consists of three colors, the original color and two neighbors of the complement color.



42940



14512275



4891754

Square

The Square scheme is like the rectangle color scheme, but the four colors are evenly spaced on the color wheel.



14512275



11112766



42899



4888548

Rectangle

The Rectangle color scheme consists of four colors that form a rectangle on the color wheel.



14512275



13794645



42899



42193

Sweetspot

The Sweet Spot groups the original color and five complimentary colors.



14512275



16767461



12153053



8415600



0



8421504

Same Dimension

The Same Dimension uses a secret algorithm to generate beautiful new colors.



14512275



16738713



14516848



7234406



11337784



3014671

Inverse Universe

The Inverse Universe completely reimagines the original color for something new.



14512275



16738713



7392221



7234406



11337784



3014671

Previews

White Background



This preview shows how the Decimal color 14512275 looks on a white background.

Color Contrast Check

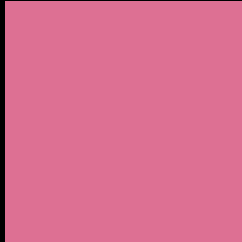
Large Text (above 18pt) WCAG AA ✓ Pass

Any Text WCAG AA ✗ Fail

Large Text (above 18pt) WCAG AAA ✗ Fail

Any Text WCAG AAA ✗ Fail

Black Background



This preview shows how the Decimal color 14512275 looks on a black background.

Color Contrast Check

Large Text (above 18pt) WCAG AA ✓ Pass

Any Text WCAG AA ✓ Pass

Large Text (above 18pt) WCAG AAA ✓ Pass

Any Text WCAG AAA × Fail

If you want to check with other color combinations, try the [Color Contrast Checker](#).

Decimal 14512275 Background



This preview shows how black text looks on a background with the Decimal color 14512275.




This preview shows how white text looks on a background with the Decimal color 14512275.

Color Blindness Simulation

Color vision deficiency is a very complex topic, and I could not describe the different causes any better than Wikipedia does, so if you want to learn more, you should check out their [article about color blindness](#).

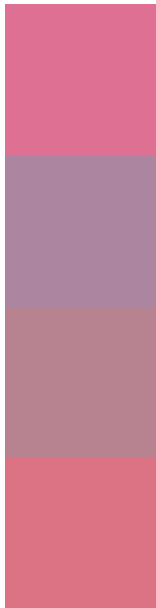
Dichromacy





Tritanopia
14382205

Trichromacy



Original Color
14512275

Protanomaly
11306656

Deuteranomaly
12092304

Tritanomaly
14447493

Monochromacy



Original Color
14512275

Achromatopsia
9803157

Achromatomaly
11503764

CSS Examples

Text

The CSS property to change the color of the text to Decimal 14512275 is called "color". The color property can be set on classes, ids or directly on the HTML element.

This example shows how text in the color #DD7093 looks like.

```
.text, #text, p{  
    color:#DD7093  
}
```

If you want to add a text shadow in that color use the text-shadow property, you can generate a text shadow directly with our [CSS Text Shadow Generator](#).

Here you see how black text with a 4 pixel #DD7093 colored shadow looks like.

```
.shadow{ text-shadow: 4px 4px 2px #DD7093
}
```

Border

The CSS property to change the border of an element to Decimal 14512275 is called "border". The border property can be set on classes, ids or directly on the HTML element.

This example shows the color as border, it can be applied via the CSS property "border" or "border-color".

```
.border, #border, table{ border:4px solid
#DD7093 }
```

If only the border color should be changed use the property `border-color`.

```
.border{ border-color:#DD7093 }
```

If you want to add a box shadow in that color use:

Here you see how a box with a 4 pixel #DD7093 colored shadow looks like.

```
.boxshadow{ -moz-box-shadow:4px 4px 4px  
4px #DD7093; -webkit-box-shadow:4px 4px  
4px 4px #DD7093; box-shadow:4px 4px 4px  
4px #DD7093 }
```

Background

The CSS property to change the background color of an element to Decimal 14512275 is called "background". The background property can be set on classes, ids or directly on the HTML element.

```
.background, #background, body{  
background:#DD7093 }
```

If only the background color should be changed can be used:

```
.background{ background-color:#DD7093 }
```

This example shows the color as background, it is applied via the CSS property "background".

To optimize and compress your CSS code, you can use our [online CSS compressor and optimizer](#) based on csstidy. If you want to create a linear or radial gradient as background or border, check our [CSS Gradient Generator](#).

Hey! You found this booklet interesting? Support Converting Colors with the new Membership Option!

The pro membership hides all ads, plus gives you double the colors in the color bucket, and more awesome pro features!

[Learn more, Memberships starting at \\$2.50/m!](#)

**Follow me
on Twitter!**

@ConvertingColor