

Converting Colors

Decimal(14520225)

Have a look what the booklet for
Decimal(14520225) contains.

Decimal(14520225)	3
<i>Conversions</i>	4
<i>Details</i>	6
<i>Harmonies</i>	11
<i>Previews</i>	23
<i>Color Blindness Simulation</i>	26
<i>CSS Examples</i>	29

Color

Decimal(14520225)

Conversions

Conversions Part 1

Format	Color
Hex	DD8FA1
RGB	221, 143, 161
RGB Percent	87%, 56%, 63%
CMY	0.1333, 0.4392, 0.3686
CMYK	0.00, 0.35, 0.27, 0.13
HSL	346°, 53%, 71%
HSV	346°, 35%, 87%
XYZ	46.0743, 37.5903, 38.5455
YIQ	168.3740, 40.7100, 22.1340

Conversions

Conversions Part 2

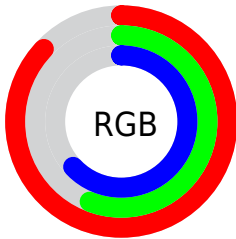
Format	Color
RYB	221, 143, 161
Decimal	14520225
CIELab	67.72, 31.92, 2.86
CIELCh	68, 32.051, 5.117
Yxy	37.5903, 0.3770, 0.3076
Android (android.graphics.Color)	4292710305 (0xFFDD8FA1)
YUV	168.3740, -3.6354, 46.1530
Hunter-Lab	61.3109, 26.8461, 5.6427

Details

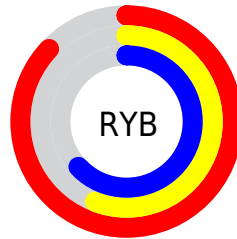
The Decimal color **14520225** is a light color, and the websafe version is hex **CC9999**. A complement of this color would be **9428427**, and the grayscale version is **11053224**.

A 20% lighter version of the original color is **16762584**, and **10771310** is the 20% darker color. If you saturate the color by 10%, you get **14514576**, and if you desaturate by 10%, it is **14525874**.

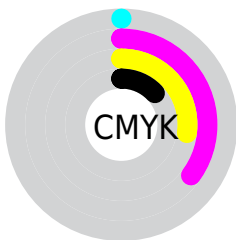
Distribution



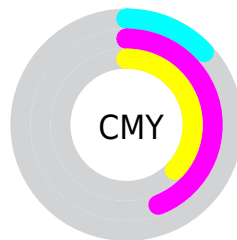
- Red (87%)
- Green (56%)
- Blue (63%)



- Red (87%)
- Yellow (56%)
- Blue (63%)



- Cyan (0%)
- Magenta (35%)
- Yellow (27%)
- Black (13%)



- Cyan (13%)
- Magenta (44%)
- Yellow (37%)

Brightness & Saturation Gradients

These gradients show how the Decimal color 14520225 changes by changing the brightness by 10 percent. The first figure shows a shift by +10% for each color and the second figure -10%.

Similar to the brightness gradients but the following saturation gradients show a change of the Decimal color 14520225 by changing the saturation by 10% instead.

 14520225

 14520225

16777215

 12612999

 16762584


 10771310

 16769780

 8995669

 7220030

 5509672

 3801108

 2359297

 0

 14520225

 14520225

 14514576

 14525874

 14508927

 14531523

 14503278

 14537172

 14497629

 14542821

 14491724

 14548726

 14486075

 14548991

 14483507

Harmonies

Analogous

The Analogous color harmony consists of three colors that are next to each other on the color wheel.



13538238



14520225



14455429

Triad

The Triadic color harmony groups three colors that are evenly spaced from another and form a triangle on the color wheel.



14520225



9809269



5877465

Complementary

The Complementary color scheme is a pair of colors which are on the opposite of each other on the color wheel.



14520225



9428427

Split Complementary

Split-complementary colors differ from the complementary color scheme. The scheme consists of three colors, the original color and two neighbors of the complement color.



4305861



14520225



7582604

Square

The Square scheme is like the rectangle color scheme, but the four colors are evenly spaced on the color wheel.



14520225



11838827



5354921



8759006

Rectangle

The Rectangle color scheme consists of four colors that form a rectangle on the color wheel.



14520225



13867127



5354921



5157332

Sweetspot

The Sweet Spot groups the original color and five complimentary colors.



14520225



16770025



13340637



8417139



0



8421504

Same Dimension

The Same Dimension uses a secret algorithm to generate beautiful new colors.



14520225



16749741



14525583



7234405



11337768



3014667

Inverse Universe

The Inverse Universe completely reimagines the original color for something new.



14520225



16749741



9423069



7234405



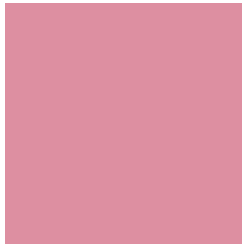
11337768



3014667

Previews

White Background



This preview shows how the Decimal color 14520225 looks on a white background.

Color Contrast Check

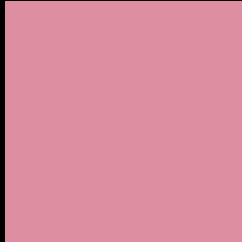
Large Text (above 18pt) WCAG AA × Fail

Any Text WCAG AA × Fail

Large Text (above 18pt) WCAG AAA × Fail

Any Text WCAG AAA × Fail

Black Background



This preview shows how the Decimal color 14520225 looks on a black background.

Color Contrast Check

Large Text (above 18pt) WCAG AA ✓ Pass

Any Text WCAG AA ✓ Pass

Large Text (above 18pt) WCAG AAA ✓ Pass

Any Text WCAG AAA ✓ Pass

If you want to check with other color combinations, try the [Color Contrast Checker](#).

Decimal 14520225 Background



This preview shows how black text looks on a background with the Decimal color 14520225.




This preview shows how white text looks on a background with the Decimal color 14520225.

Color Blindness Simulation

Color vision deficiency is a very complex topic, and I could not describe the different causes any better than Wikipedia does, so if you want to learn more, you should check out their [article about color blindness](#).

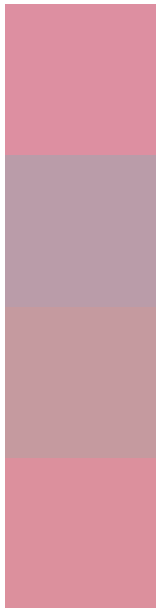
Dichromacy





Tritanopia
14454939

Trichromacy



Original Color
14520225

Protanomaly
12229801

Deuteranomaly
12950175

Tritanomaly
14454941

Monochromacy



Original Color
14520225

Achromatopsia
11053224

Achromatomaly
12296101

CSS Examples

Text

The CSS property to change the color of the text to Decimal 14520225 is called "color". The color property can be set on classes, ids or directly on the HTML element.

This example shows how text in the color #DD8FA1 looks like.

```
.text, #text, p{  
    color:#DD8FA1  
}
```

If you want to add a text shadow in that color use the text-shadow property, you can generate a text shadow directly with our [CSS Text Shadow Generator](#).

Here you see how black text with a 4 pixel #DD8FA1 colored shadow looks like.

```
.shadow{ text-shadow: 4px 4px 2px #DD8FA1
}
```

Border

The CSS property to change the border of an element to Decimal 14520225 is called "border". The border property can be set on classes, ids or directly on the HTML element.

This example shows the color as border, it can be applied via the CSS property "border" or "border-color".

```
.border, #border, table{ border:4px solid
#DD8FA1 }
```

If only the border color should be changed use the property `border-color`.

```
.border{ border-color:#DD8FA1 }
```

If you want to add a box shadow in that color use:

Here you see how a box with a 4 pixel #DD8FA1 colored shadow looks like.

```
.boxshadow{ -moz-box-shadow:4px 4px 4px  
4px #DD8FA1; -webkit-box-shadow:4px 4px  
4px 4px #DD8FA1; box-shadow:4px 4px 4px  
4px #DD8FA1 }
```

Background

The CSS property to change the background color of an element to Decimal 14520225 is called "background". The background property can be set on classes, ids or directly on the HTML element.

```
.background, #background, body{  
background:#DD8FA1 }
```

If only the background color should be changed can be used:

```
.background{ background-color:#DD8FA1 }
```

This example shows the color as background, it is applied via the CSS property "background".

To optimize and compress your CSS code, you can use our [online CSS compressor and optimizer](#) based on csstidy. If you want to create a linear or radial gradient as background or border, check our [CSS Gradient Generator](#).

Hey! You found this booklet interesting? Support Converting Colors with the new Membership Option!

The pro membership hides all ads, plus gives you double the colors in the color bucket, and more awesome pro features!

[Learn more, Memberships starting at \\$2.50/m!](#)

**Follow me
on Twitter!**

@ConvertingColor