

Converting Colors

Decimal(14521270)

Have a look what the booklet for
Decimal(14521270) contains.

Decimal(14521270)	3
<i>Conversions</i>	4
<i>Details</i>	6
<i>Harmonies</i>	11
<i>Previews</i>	23
<i>Color Blindness Simulation</i>	26
<i>CSS Examples</i>	29

Color

Decimal(14521270)

Conversions

Conversions Part 1

Format	Color
Hex	DD93B6
RGB	221, 147, 182
RGB Percent	87%, 58%, 71%
CMY	0.1333, 0.4235, 0.2863
CMYK	0.00, 0.33, 0.18, 0.13
HSL	332°, 52%, 72%
HSV	332°, 33%, 87%
XYZ	48.6960, 39.6170, 49.3363
YIQ	173.1160, 32.8690, 26.5730

Conversions

Conversions Part 2

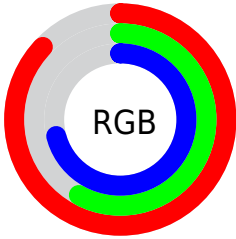
Format	Color
RYB	221, 147, 182
Decimal	14521270
CIELab	69.20, 32.86, -6.73
CIELCh	69, 33.545, 348.435
Yxy	39.6170, 0.3538, 0.2878
Android (android.graphics.Color)	4292711350 (0xFFDD93B6)
YUV	173.1160, 4.3798, 41.9943
Hunter-Lab	62.9420, 27.9506, -2.4142

Details

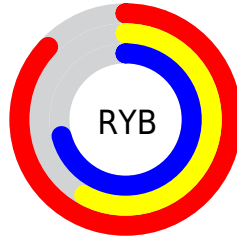
The Decimal color **14521270** is a light color, and the websafe version is hex **CC99CC**. A complement of this color would be **9690554**, and the grayscale version is **11382189**.

A 20% lighter version of the original color is **16763630**, and **10837889** is the 20% darker color. If you saturate the color by 10%, you get **14515626**, and if you desaturate by 10%, it is **14526914**.

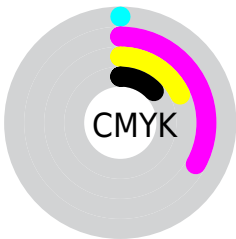
Distribution



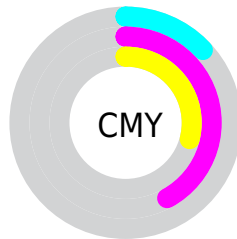
- Red (87%)
- Green (58%)
- Blue (71%)



- Red (87%)
- Yellow (58%)
- Blue (71%)



- Cyan (0%)
- Magenta (33%)
- Yellow (18%)
- Black (13%)



- Cyan (13%)
- Magenta (42%)
- Yellow (29%)

Brightness & Saturation Gradients

These gradients show how the Decimal color 14521270 changes by changing the brightness by 10 percent. The first figure shows a shift by +10% for each color and the second figure -10%.

Similar to the brightness gradients but the following saturation gradients show a change of the Decimal color 14521270 by changing the saturation by 10% instead.

 14521270

 14521270

16777215

 12614043

 16763630

 10837889

 16770815

 8996456

 7286352

 5576249

 3932196

 2621454

 0

 14521270

 14521270

 14515626

 14526914

 14509983

 14532557

 14504339

 14538201

 14498695

 14543845

 14492796

 14548976

 14487152

 14548988

 14483561

 14548991

Harmonies

Analogous

The Analogous color harmony consists of three colors that are next to each other on the color wheel.



12884945



14521270



15045271

Triad

The Triadic color harmony groups three colors that are evenly spaced from another and form a triangle on the color wheel.



14521270



11251055



4503253

Complementary

The Complementary color scheme is a pair of colors which are on the opposite of each other on the color wheel.



14521270



9690554

Split Complementary

Split-complementary colors differ from the complementary color scheme. The scheme consists of three colors, the original color and two neighbors of the complement color.



4438459



14521270



8959104

Square

The Square scheme is like the rectangle color scheme, but the four colors are evenly spaced on the color wheel.



14521270



13149038



6535580



7122916

Rectangle

The Rectangle color scheme consists of four colors that form a rectangle on the color wheel.



14521270



14784133



6535580



4045006

Sweetspot

The Sweet Spot groups the original color and five complimentary colors.



14521270



16770802



12162013



8417399



0



8421504

Same Dimension

The Same Dimension uses a secret algorithm to generate beautiful new colors.



14521270



16751049



14521491



7234408



11337810



3014678

Inverse Universe

The Inverse Universe completely reimagines the original color for something new.



14521270



16751049



9690333



7234408



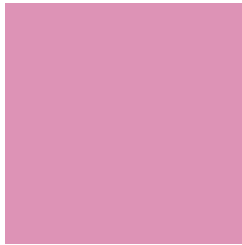
11337810



3014678

Previews

White Background



This preview shows how the Decimal color 14521270 looks on a white background.

Color Contrast Check

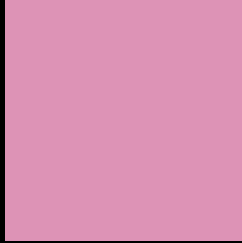
Large Text (above 18pt) WCAG AA × Fail

Any Text WCAG AA × Fail

Large Text (above 18pt) WCAG AAA × Fail

Any Text WCAG AAA × Fail

Black Background



This preview shows how the Decimal color 14521270 looks on a black background.

Color Contrast Check

Large Text (above 18pt) WCAG AA ✓ Pass

Any Text WCAG AA ✓ Pass

Large Text (above 18pt) WCAG AAA ✓ Pass

Any Text WCAG AAA ✓ Pass

If you want to check with other color combinations, try the [Color Contrast Checker](#).

Decimal 14521270 Background



This preview shows how black text looks on a background with the Decimal color 14521270.

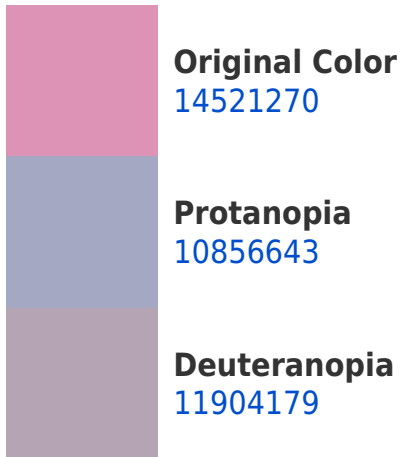



This preview shows how white text looks on a background with the Decimal color 14521270.

Color Blindness Simulation

Color vision deficiency is a very complex topic, and I could not describe the different causes any better than Wikipedia does, so if you want to learn more, you should check out their [article about color blindness](#).

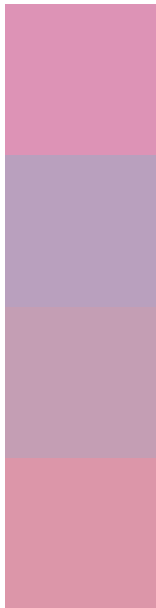
Dichromacy





Tritanopia
14391202

Trichromacy



Original Color
14521270

Protanomaly
12165310

Deuteranomaly
12885684

Tritanomaly
14456489

Monochromacy



Original Color
14521270

Achromatopsia
11382189

Achromatomaly
12494000

CSS Examples

Text

The CSS property to change the color of the text to Decimal 14521270 is called "color". The color property can be set on classes, ids or directly on the HTML element.

This example shows how text in the color #DD93B6 looks like.

```
.text, #text, p{  
    color:#DD93B6  
}
```

If you want to add a text shadow in that color use the text-shadow property, you can generate a text shadow directly with our [CSS Text Shadow Generator](#).

Here you see how black text with a 4 pixel #DD93B6 colored shadow looks like.

```
.shadow{ text-shadow: 4px 4px 2px #DD93B6
}
```

Border

The CSS property to change the border of an element to Decimal 14521270 is called "border". The border property can be set on classes, ids or directly on the HTML element.

This example shows the color as border, it can be applied via the CSS property "border" or "border-color".

```
.border, #border, table{ border:4px solid
#DD93B6 }
```

If only the border color should be changed use the property `border-color`.

```
.border{ border-color:#DD93B6 }
```

If you want to add a box shadow in that color use:

Here you see how a box with a 4 pixel #DD93B6 colored shadow looks like.

```
.boxshadow{ -moz-box-shadow:4px 4px 4px  
4px #DD93B6; -webkit-box-shadow:4px 4px  
4px 4px #DD93B6; box-shadow:4px 4px 4px  
4px #DD93B6 }
```

Background

The CSS property to change the background color of an element to Decimal 14521270 is called "background". The background property can be set on classes, ids or directly on the HTML element.

```
.background, #background, body{  
background:#DD93B6 }
```

If only the background color should be changed can be used:

```
.background{ background-color:#DD93B6 }
```

This example shows the color as background, it is applied via the CSS property "background".

To optimize and compress your CSS code, you can use our [online CSS compressor and optimizer](#) based on csstidy. If you want to create a linear or radial gradient as background or border, check our [CSS Gradient Generator](#).

Hey! You found this booklet interesting? Support Converting Colors with the new Membership Option!

The pro membership hides all ads, plus gives you double the colors in the color bucket, and more awesome pro features!

[Learn more, Memberships starting at \\$2.50/m!](#)

**Follow me
on Twitter!**

@ConvertingColor