

# Converting Colors

Decimal(14526390)

Have a look what the booklet for  
Decimal(14526390) contains.

<b>Decimal(14526390)</b> .....	3
<i><b>Conversions</b></i> .....	4
<i><b>Details</b></i> .....	6
<i><b>Harmonies</b></i> .....	11
<i><b>Previews</b></i> .....	23
<i><b>Color Blindness Simulation</b></i> .....	26
<i><b>CSS Examples</b></i> .....	29

# **Color**

**Decimal(14526390)**

# Conversions

## Conversions Part 1

<b>Format</b>	<b>Color</b>
Hex	DDA7B6
RGB	221, 167, 182
RGB Percent	87%, 65%, 71%
CMY	0.1333, 0.3451, 0.2863
CMYK	0.00, 0.24, 0.18, 0.13
HSL	343°, 44%, 76%
HSV	343°, 24%, 87%
XYZ	52.0810, 46.3870, 50.4646
YIQ	184.8560, 27.3690, 16.1130

# Conversions

## Conversions Part 2

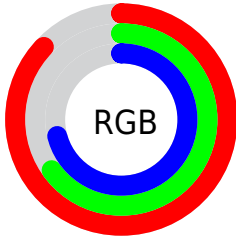
Format	Color
R <sub>Y</sub> B	221, 167, 182
Decimal	14526390
CIE Lab	73.80, 22.10, 0.04
CIE LCh	74, 22.100, 0.114
Yxy	46.3870, 0.3497, 0.3115
Android (android.graphics.Color)	4292716470 (0xFFDDA7B6)
YUV	184.8560, -1.4080, 31.6983
Hunter-Lab	68.1080, 17.3069, 3.7447

# Details

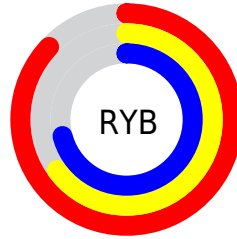
The Decimal color **14526390** is a light color, and the websafe version is hex **CC9999**. A complement of this color would be **11001294**, and the grayscale version is **12171705**.

A 20% lighter version of the original color is **16768750**, and **10843009** is the 20% darker color. If you saturate the color by 10%, you get **14520742**, and if you desaturate by 10%, it is **14532038**.

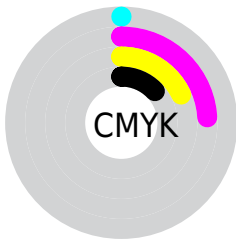
# Distribution



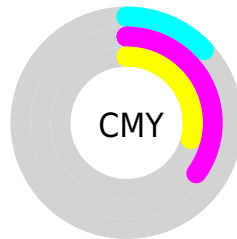
- Red (87%)
- Green (65%)
- Blue (71%)



- Red (87%)
- Yellow (65%)
- Blue (71%)



- Cyan (0%)
- Magenta (24%)
- Yellow (18%)
- Black (13%)



- Cyan (13%)
- Magenta (35%)
- Yellow (29%)

# Brightness & Saturation Gradients

These gradients show how the Decimal color 14526390 changes by changing the brightness by 10 percent. The first figure shows a shift by +10% for each color and the second figure -10%.

Similar to the brightness gradients but the following saturation gradients show a change of the Decimal color 14526390 by changing the saturation by 10% instead.



 14526390

 14526390

16777215

 12684443

 16768750

 10843009

 16776191

 9067112

 7357008

 5712697

 4068644

 2686990

 0

 14526390

 14526390

 14520742

 14532038

 14515094

 14537686

 14509446

 14543334

 14503798

 14548982

 14498150

 14548991

 14492246

 14486598

 14483517

# Harmonies

## Analogous

The Analogous color harmony consists of three colors that are next to each other on the color wheel.



13675210



14526390



14657698

# Triad

The Triadic color harmony groups three colors that are evenly spaced from another and form a triangle on the color wheel.



14526390



11516562



8830424

# Complementary

The Complementary color scheme is a pair of colors which are on the opposite of each other on the color wheel.



14526390



11001294

# Split Complementary

Split-complementary colors differ from the complementary color scheme. The scheme consists of three colors, the original color and two neighbors of the complement color.



8241353



14526390



10010529

# Square

The Square scheme is like the rectangle color scheme, but the four colors are evenly spaced on the color wheel.



14526390



12956813



8700341



10401757

# Rectangle

The Rectangle color scheme consists of four colors that form a rectangle on the color wheel.



14526390



14330775



8700341



8502996



# Sweetspot

The Sweet Spot groups the original color and five complimentary colors.



14526390



16772594



13543389



8418680



0



8421504



# Same Dimension

The Same Dimension uses a secret algorithm to generate beautiful new colors.



14526390



16758218



14529447



7234406



11337776



3014669



# Inverse Universe

The Inverse Universe completely reimagines the original color for something new.



14526390



16758218



10998237



7234406



11337776

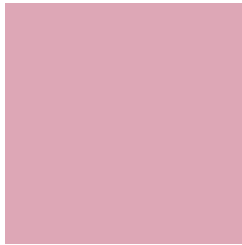


3014669



# Previews

## White Background



This preview shows how the Decimal color 14526390 looks on a white background.

## Color Contrast Check

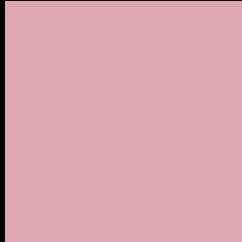
Large Text (above 18pt) WCAG AA × Fail

Any Text WCAG AA × Fail

Large Text (above 18pt) WCAG AAA × Fail

Any Text WCAG AAA × Fail

# Black Background



This preview shows how the Decimal color 14526390 looks on a black background.

## Color Contrast Check

Large Text (above 18pt) WCAG AA ✓ Pass

Any Text WCAG AA ✓ Pass

Large Text (above 18pt) WCAG AAA ✓ Pass

Any Text WCAG AAA ✓ Pass

If you want to check with other color combinations, try the [Color Contrast Checker](#).



## Decimal 14526390 Background



This preview shows how black text looks on a background with the Decimal color 14526390.




This preview shows how white text looks on a background with the Decimal color 14526390.

# Color Blindness Simulation

Color vision deficiency is a very complex topic, and I could not describe the different causes any better than Wikipedia does, so if you want to learn more, you should check out their [article about color blindness](#).

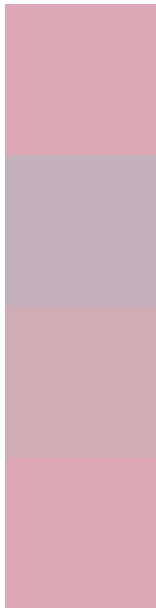
## Dichromacy





**Tritanopia**  
14526388

# Trichromacy



**Original Color**  
14526390

**Protanomaly**  
12890299

**Deuteranomaly**  
13675957

**Tritanomaly**  
14526389

# Monochromacy



**Original Color**  
14526390

**Achromatopsia**  
12171705

**Achromatomaly**  
13021880

# CSS Examples

## Text

The CSS property to change the color of the text to Decimal 14526390 is called "color". The color property can be set on classes, ids or directly on the HTML element.

This example shows how text in the color #DDA7B6 looks like.

```
.text, #text, p{  
    color:#DDA7B6  
}
```

If you want to add a text shadow in that color use the text-shadow property, you can generate a text shadow directly with our [CSS Text Shadow Generator](#).

Here you see how black text with a 4 pixel #DDA7B6 colored shadow looks like.

```
.shadow{ text-shadow: 4px 4px 2px #DDA7B6
}
```

## Border

The CSS property to change the border of an element to Decimal 14526390 is called "border". The border property can be set on classes, ids or directly on the HTML element.

This example shows the color as border, it can be applied via the CSS property "border" or "border-color".

```
.border, #border, table{ border:4px solid
#DDA7B6 }
```

If only the border color should be changed use the property `border-color`.

```
.border{ border-color:#DDA7B6 }
```

If you want to add a box shadow in that color use:

Here you see how a box with a 4 pixel #DDA7B6 colored shadow looks like.

```
.boxshadow{ -moz-box-shadow:4px 4px 4px  
4px #DDA7B6; -webkit-box-shadow:4px 4px  
4px 4px #DDA7B6; box-shadow:4px 4px 4px  
4px #DDA7B6 }
```

# Background

The CSS property to change the background color of an element to Decimal 14526390 is called "background". The background property can be set on classes, ids or directly on the HTML element.

```
.background, #background, body{  
background:#DDA7B6 }
```

If only the background color should be changed can be used:

```
.background{ background-color:#DDA7B6 }
```

This example shows the color as background, it is applied via the CSS property "background".

To optimize and compress your CSS code, you can use our [online CSS compressor and optimizer](#) based on csstidy. If you want to create a linear or radial gradient as background or border, check our [CSS Gradient Generator](#).



Hey! You found this booklet interesting? Support Converting Colors with the new Membership Option!

The pro membership hides all ads, plus gives you double the colors in the color bucket, and more awesome pro features!

**[Learn more, Memberships starting at \\$2.50/m!](#)**

**Follow me  
on Twitter!**

@ConvertingColor