

Converting Colors

Decimal(14526597)

Have a look what the booklet for
Decimal(14526597) contains.

Decimal(14526597)	3
<i>Conversions</i>	4
<i>Details</i>	6
<i>Harmonies</i>	11
<i>Previews</i>	23
<i>Color Blindness Simulation</i>	26
<i>CSS Examples</i>	29

Color

Decimal(14526597)

Conversions

Conversions Part 1

Format	Color
Hex	DDA885
RGB	221, 168, 133
RGB Percent	87%, 66%, 52%
CMY	0.1333, 0.3412, 0.4784
CMYK	0.00, 0.24, 0.40, 0.13
HSL	24°, 56%, 69%
HSV	24°, 40%, 87%
XYZ	48.0551, 45.0709, 28.3571
YIQ	179.8570, 42.8230, 0.3510

Conversions

Conversions Part 2

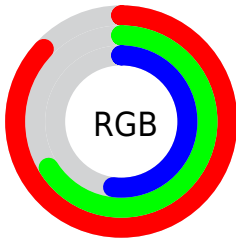
Format	Color
RYB	221, 191, 133
Decimal	14526597
CIELab	72.94, 14.97, 25.62
CIELCh	73, 29.673, 59.705
Yxy	45.0709, 0.3956, 0.3710
Android (android.graphics.Color)	4292716677 (0xFFDDA885)
YUV	179.8570, -23.1005, 36.0824
Hunter-Lab	67.1348, 10.2842, 21.9509

Details

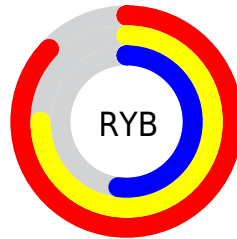
The Decimal color **14526597** is a light color, and the websafe version is hex **CC9966**. A complement of this color would be **8764125**, and the grayscale version is **11842740**.

A 20% lighter version of the original color is **16768954**, and **10777683** is the 20% darker color. If you saturate the color by 10%, you get **14523247**, and if you desaturate by 10%, it is **14529947**.

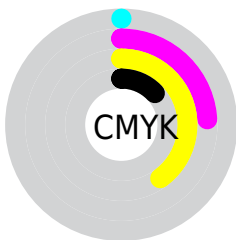
Distribution



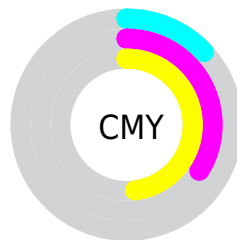
- Red (87%)
- Green (66%)
- Blue (52%)



- Red (87%)
- Yellow (75%)
- Blue (52%)



- Cyan (0%)
- Magenta (24%)
- Yellow (40%)
- Black (13%)



- Cyan (13%)
- Magenta (34%)
- Yellow (48%)

Brightness & Saturation Gradients

These gradients show how the Decimal color 14526597 changes by changing the brightness by 10 percent. The first figure shows a shift by +10% for each color and the second figure -10%.

Similar to the brightness gradients but the following saturation gradients show a change of the Decimal color 14526597 by changing the saturation by 10% instead.

 14526597

 14526597

16777215

 12619372

 16768954

 10777683

 16776406

 9001788

 16777203

 7226405

 5451024

 3872768

 2293760

 0

 14526597

 14526597

14523247

14529947

14519641

14533553

14516291

14536903

14512941

14540253

14509334

14543860

14505984

14547199

14548991

Harmonies

Analogous

The Analogous color harmony consists of three colors that are next to each other on the color wheel.



15311257



14526597



13087101

Triad

The Triadic color harmony groups three colors that are evenly spaced from another and form a triangle on the color wheel.



14526597



7193266



12037346

Complementary

The Complementary color scheme is a pair of colors which are on the opposite of each other on the color wheel.



14526597



8764125

Split Complementary

Split-complementary colors differ from the complementary color scheme. The scheme consists of three colors, the original color and two neighbors of the complement color.



9484009



14526597



6209997

Square

The Square scheme is like the rectangle color scheme, but the four colors are evenly spaced on the color wheel.



14526597



9093015



7126497



14066639

Rectangle

The Rectangle color scheme consists of four colors that form a rectangle on the color wheel.



14526597



11843455



7126497



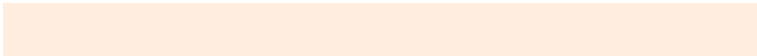
11186150

Sweetspot

The Sweet Spot groups the original color and five complimentary colors.



14526597



16772576



14517691



8418670



0



8421504

Same Dimension

The Same Dimension uses a secret algorithm to generate beautiful new colors.



14526597



16758149



14537605



7235427



11355392



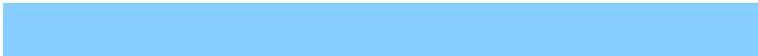
3019264

Inverse Universe

The Inverse Universe completely reimagines the original color for something new.



8764125



8769279



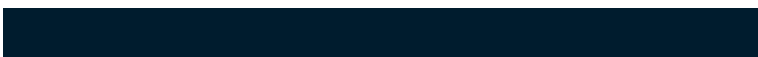
8753117



6515054



26797



7214

Previews

White Background



This preview shows how the Decimal color 14526597 looks on a white background.

Color Contrast Check

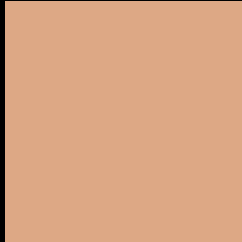
Large Text (above 18pt) WCAG AA × Fail

Any Text WCAG AA × Fail

Large Text (above 18pt) WCAG AAA × Fail

Any Text WCAG AAA × Fail

Black Background



This preview shows how the Decimal color 14526597 looks on a black background.

Color Contrast Check

Large Text (above 18pt) WCAG AA ✓ Pass

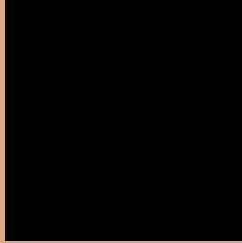
Any Text WCAG AA ✓ Pass

Large Text (above 18pt) WCAG AAA ✓ Pass

Any Text WCAG AAA ✓ Pass

If you want to check with other color combinations, try the [Color Contrast Checker](#).

Decimal 14526597 Background



This preview shows how black text looks on a background with the Decimal color 14526597.



This preview shows how white text looks on a background with the Decimal color 14526597.

Color Blindness Simulation

Color vision deficiency is a very complex topic, and I could not describe the different causes any better than Wikipedia does, so if you want to learn more, you should check out their [article about color blindness](#).

Dichromacy





Tritanopia
14787247

Trichromacy



Original Color
14526597

Protanomaly
13283208

Deuteranomaly
14134148

Tritanomaly
14722208

Monochromacy



Original Color
14526597

Achromatopsia
11842740

Achromatomaly
12824739

CSS Examples

Text

The CSS property to change the color of the text to Decimal 14526597 is called "color". The color property can be set on classes, ids or directly on the HTML element.

This example shows how text in the color #DDA885 looks like.

```
.text, #text, p{  
    color:#DDA885  
}
```

If you want to add a text shadow in that color use the text-shadow property, you can generate a text shadow directly with our [CSS Text Shadow Generator](#).

Here you see how black text with a 4 pixel #DDA885 colored shadow looks like.

```
.shadow{ text-shadow: 4px 4px 2px #DDA885
}
```

Border

The CSS property to change the border of an element to Decimal 14526597 is called "border". The border property can be set on classes, ids or directly on the HTML element.

This example shows the color as border, it can be applied via the CSS property "border" or "border-color".

```
.border, #border, table{ border:4px solid
#DDA885 }
```

If only the border color should be changed use the property `border-color`.

```
.border{ border-color:#DDA885 }
```

If you want to add a box shadow in that color use:

Here you see how a box with a 4 pixel #DDA885 colored shadow looks like.

```
.boxshadow{ -moz-box-shadow:4px 4px 4px  
4px #DDA885; -webkit-box-shadow:4px 4px  
4px 4px #DDA885; box-shadow:4px 4px 4px  
4px #DDA885 }
```

Background

The CSS property to change the background color of an element to Decimal 14526597 is called "background". The background property can be set on classes, ids or directly on the HTML element.

```
.background, #background, body{  
background:#DDA885 }
```

If only the background color should be changed can be used:

```
.background{ background-color:#DDA885 }
```

This example shows the color as background, it is applied via the CSS property "background".

To optimize and compress your CSS code, you can use our [online CSS compressor and optimizer](#) based on csstidy. If you want to create a linear or radial gradient as background or border, check our [CSS Gradient Generator](#).

Hey! You found this booklet interesting? Support Converting Colors with the new Membership Option!

The pro membership hides all ads, plus gives you double the colors in the color bucket, and more awesome pro features!

[Learn more, Memberships starting at \\$2.50/m!](#)

**Follow me
on Twitter!**

@ConvertingColor