

Converting Colors

Decimal(14529195)

Have a look what the booklet for
Decimal(14529195) contains.

Decimal(14529195)	3
<i>Conversions</i>	4
<i>Details</i>	6
<i>Harmonies</i>	11
<i>Previews</i>	23
<i>Color Blindness Simulation</i>	26
<i>CSS Examples</i>	29

Color

Decimal(14529195)

Conversions

Conversions Part 1

Format	Color
Hex	DDB2AB
RGB	221, 178, 171
RGB Percent	87%, 70%, 67%
CMY	0.1333, 0.3020, 0.3294
CMYK	0.00, 0.19, 0.23, 0.13
HSL	8°, 42%, 77%
HSV	8°, 23%, 87%
XYZ	53.0899, 50.1532, 45.4105
YIQ	190.0590, 27.8750, 6.9390

Conversions

Conversions Part 2

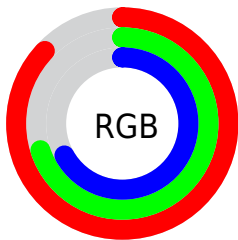
Format	Color
R _Y B	221, 179, 171
Decimal	14529195
CIE Lab	76.16, 14.52, 9.48
CIE LCh	76, 17.339, 33.125
Yxy	50.1532, 0.3571, 0.3374
Android (android.graphics.Color)	4292719275 (0xFFDDB2AB)
YUV	190.0590, -9.3961, 27.1353
Hunter-Lab	70.8189, 9.8805, 11.5554

Details

The Decimal color **14529195** is a light color, and the websafe version is hex **CC9999**. A complement of this color would be **11261661**, and the grayscale version is **12500670**.

A 20% lighter version of the original color is **16771810**, and **10845559** is the 20% darker color. If you saturate the color by 10%, you get **14524309**, and if you desaturate by 10%, it is **14534081**.

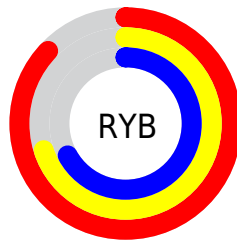
Distribution



Red (87%)

Green (70%)

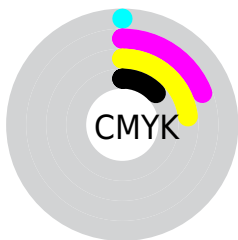
Blue (67%)



Red (87%)

Yellow (70%)

Blue (67%)

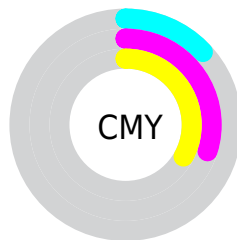


Cyan (0%)

Magenta (19%)

Yellow (23%)

Black (13%)



Cyan (13%)

Magenta (30%)

Yellow (33%)

Brightness & Saturation Gradients

These gradients show how the Decimal color 14529195 changes by changing the brightness by 10 percent. The first figure shows a shift by +10% for each color and the second figure -10%.

Similar to the brightness gradients but the following saturation gradients show a change of the Decimal color 14529195 by changing the saturation by 10% instead.

 14529195

 14529195

16777215

 12687248

 16771810

 10845559

 9069662

 7359559

 5715248

 4136731

 2689536

 0

 14529195

 14529195

 14524309

 14534081

 14519423

 14538967

 14514537

 14543853

 14509651

 14548735

 14504764

 14548991

 14499878

 14494992

 14491392

Harmonies

Analogous

The Analogous color harmony consists of three colors that are next to each other on the color wheel.



14463419



14529195



14005920

Triad

The Triadic color harmony groups three colors that are evenly spaced from another and form a triangle on the color wheel.



14529195



10732717



11320795

Complementary

The Complementary color scheme is a pair of colors which are on the opposite of each other on the color wheel.



14529195



11261661

Split Complementary

Split-complementary colors differ from the complementary color scheme. The scheme consists of three colors, the original color and two neighbors of the complement color.



10142168



14529195



9881021

Square

The Square scheme is like the rectangle color scheme, but the four colors are evenly spaced on the color wheel.



14529195



11911329



9618637



12695511

Rectangle

The Rectangle color scheme consists of four colors that form a rectangle on the color wheel.



14529195



13416860



9618637



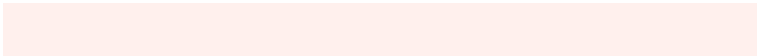
10927835

Sweetspot

The Sweet Spot groups the original color and five complimentary colors.



14529195



16773357



14527446



8419189



0



8421504

Same Dimension

The Same Dimension uses a secret algorithm to generate beautiful new colors.



14529195



16762042



14535595



7234659



11343872



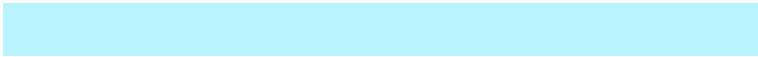
3016192

Inverse Universe

The Inverse Universe completely reimagines the original color for something new.



11261661



12252671



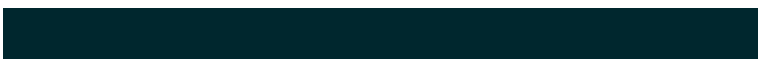
11255261



6515822



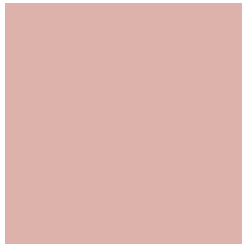
38317



10030

Previews

White Background



This preview shows how the Decimal color 14529195 looks on a white background.

Color Contrast Check

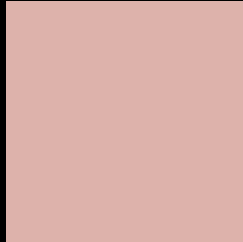
Large Text (above 18pt) WCAG AA × Fail

Any Text WCAG AA × Fail

Large Text (above 18pt) WCAG AAA × Fail

Any Text WCAG AAA × Fail

Black Background



This preview shows how the Decimal color 14529195 looks on a black background.

Color Contrast Check

Large Text (above 18pt) WCAG AA ✓ Pass

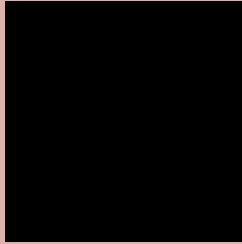
Any Text WCAG AA ✓ Pass

Large Text (above 18pt) WCAG AAA ✓ Pass

Any Text WCAG AAA ✓ Pass

If you want to check with other color combinations, try the [Color Contrast Checker](#).

Decimal 14529195 Background



This preview shows how black text looks on a background with the Decimal color 14529195.




This preview shows how white text looks on a background with the Decimal color 14529195.

Color Blindness Simulation

Color vision deficiency is a very complex topic, and I could not describe the different causes any better than Wikipedia does, so if you want to learn more, you should check out their [article about color blindness](#).

Dichromacy





Tritanopia
14659517

Trichromacy



Original Color
14529195

Protanomaly
13416622

Deuteranomaly
14202026

Tritanomaly
14594230

Monochromacy



Original Color
14529195

Achromatopsia
12500670

Achromatomaly
13220535

CSS Examples

Text

The CSS property to change the color of the text to Decimal 14529195 is called "color". The color property can be set on classes, ids or directly on the HTML element.

This example shows how text in the color #DDB2AB looks like.

```
.text, #text, p{  
    color:#DDB2AB  
}
```

If you want to add a text shadow in that color use the text-shadow property, you can generate a text shadow directly with our [CSS Text Shadow Generator](#).

Here you see how black text with a 4 pixel #DDB2AB colored shadow looks like.

```
.shadow{ text-shadow: 4px 4px 2px #DDB2AB
}
```

Border

The CSS property to change the border of an element to Decimal 14529195 is called "border". The border property can be set on classes, ids or directly on the HTML element.

This example shows the color as border, it can be applied via the CSS property "border" or "border-color".

```
.border, #border, table{ border:4px solid
#DDB2AB }
```

If only the border color should be changed use the property `border-color`.

```
.border{ border-color:#DDB2AB }
```

If you want to add a box shadow in that color use:

Here you see how a box with a 4 pixel #DDB2AB colored shadow looks like.

```
.boxshadow{ -moz-box-shadow:4px 4px 4px  
4px #DDB2AB; -webkit-box-shadow:4px 4px  
4px 4px #DDB2AB; box-shadow:4px 4px 4px  
4px #DDB2AB }
```

Background

The CSS property to change the background color of an element to Decimal 14529195 is called "background". The background property can be set on classes, ids or directly on the HTML element.

```
.background, #background, body{  
background:#DDB2AB }
```

If only the background color should be changed can be used:

```
.background{ background-color:#DDB2AB }
```

This example shows the color as background, it is applied via the CSS property "background".

To optimize and compress your CSS code, you can use our [online CSS compressor and optimizer](#) based on csstidy. If you want to create a linear or radial gradient as background or border, check our [CSS Gradient Generator](#).

Hey! You found this booklet interesting? Support Converting Colors with the new Membership Option!

The pro membership hides all ads, plus gives you double the colors in the color bucket, and more awesome pro features!

[Learn more, Memberships starting at \\$2.50/m!](#)

**Follow me
on Twitter!**

@ConvertingColor