

Converting Colors

Decimal(14530221)

Have a look what the booklet for
Decimal(14530221) contains.

Decimal(14530221)	3
<i>Conversions</i>	4
<i>Details</i>	6
<i>Harmonies</i>	11
<i>Previews</i>	23
<i>Color Blindness Simulation</i>	26
<i>CSS Examples</i>	29

Color

Decimal(14530221)

Conversions

Conversions Part 1

Format	Color
Hex	DDB6AD
RGB	221, 182, 173
RGB Percent	87%, 71%, 68%
CMY	0.1333, 0.2863, 0.3216
CMYK	0.00, 0.18, 0.22, 0.13
HSL	11°, 41%, 77%
HSV	11°, 22%, 87%
XYZ	54.0896, 51.8452, 46.6915
YIQ	192.6350, 26.1330, 5.4690

Conversions

Conversions Part 2

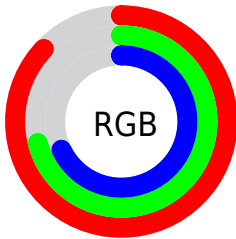
Format	Color
R_{YB}	221, 184, 173
Decimal	14530221
CIE _{Lab}	77.19, 12.67, 9.85
CIE _{LCh}	77, 16.050, 37.860
Yxy	51.8452, 0.3544, 0.3397
Android (android.graphics.Color)	4292720301 (0xFFDDB6AD)
YUV	192.6350, -9.6801, 24.8761
Hunter-Lab	72.0036, 8.0841, 11.9553

Details

The Decimal color **14530221** is a light color, and the websafe version is hex **FFCCCC**. A complement of this color would be **11392221**, and the grayscale version is **12698049**.

A 20% lighter version of the original color is **16772836**, and **10846585** is the 20% darker color. If you saturate the color by 10%, you get **14525591**, and if you desaturate by 10%, it is **14534851**.

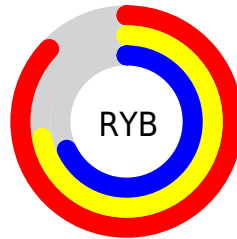
Distribution



Red (87%)

Green (71%)

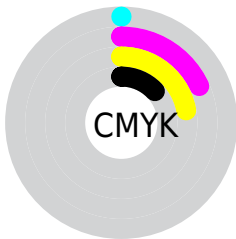
Blue (68%)



Red (87%)

Yellow (72%)

Blue (68%)

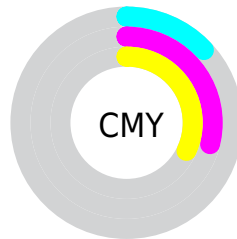


Cyan (0%)

Magenta (18%)

Yellow (22%)

Black (13%)



Cyan (13%)

Magenta (29%)

Yellow (32%)

Brightness & Saturation Gradients

These gradients show how the Decimal color 14530221 changes by changing the brightness by 10 percent. The first figure shows a shift by +10% for each color and the second figure -10%.

Similar to the brightness gradients but the following saturation gradients show a change of the Decimal color 14530221 by changing the saturation by 10% instead.

 14530221

 14530221

16777215

 12688274

 16772836

 10846585

 9070688

 7360584

 5716274

 4137757

 2690563

 65536

 0

 14530221

 14530221

 14525591

 14534851

 14520961

 14539481

 14516331

 14544111

 14511701

 14548735

 14507071

 14548991

 14502440

 14497810

 14493952

Harmonies

Analogous

The Analogous color harmony consists of three colors that are next to each other on the color wheel.



14595259



14530221



14006948

Triad

The Triadic color harmony groups three colors that are evenly spaced from another and form a triangle on the color wheel.



14530221



10864307



11780060

Complementary

The Complementary color scheme is a pair of colors which are on the opposite of each other on the color wheel.



14530221



11392221

Split Complementary

Split-complementary colors differ from the complementary color scheme. The scheme consists of three colors, the original color and two neighbors of the complement color.



10666970



14530221



10143682

Square

The Square scheme is like the rectangle color scheme, but the four colors are evenly spaced on the color wheel.



14530221



11977639



10077904



13023958

Rectangle

The Rectangle color scheme consists of four colors that form a rectangle on the color wheel.



14530221



13417889



10077904



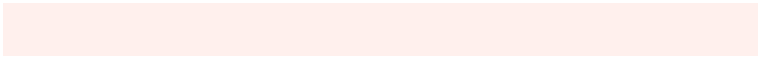
11387100

Sweetspot

The Sweet Spot groups the original color and five complimentary colors.



14530221



16773357



14527956



8419189



0



8421504

Same Dimension

The Same Dimension uses a secret algorithm to generate beautiful new colors.



14530221



16763325



14536365



7234915



11346176



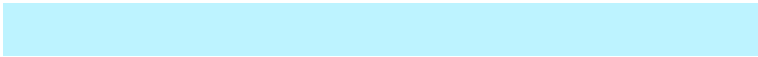
3016960

Inverse Universe

The Inverse Universe completely reimagines the original color for something new.



11392221



12448767



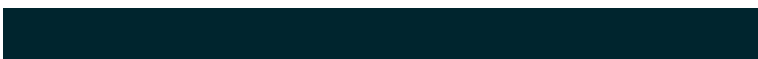
11386077



6515822



36269



9518

Previews

White Background



This preview shows how the Decimal color 14530221 looks on a white background.

Color Contrast Check

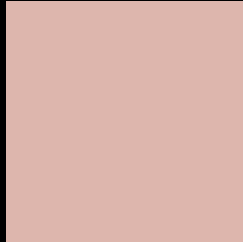
Large Text (above 18pt) WCAG AA × Fail

Any Text WCAG AA × Fail

Large Text (above 18pt) WCAG AAA × Fail

Any Text WCAG AAA × Fail

Black Background



This preview shows how the Decimal color 14530221 looks on a black background.

Color Contrast Check

Large Text (above 18pt) WCAG AA ✓ Pass

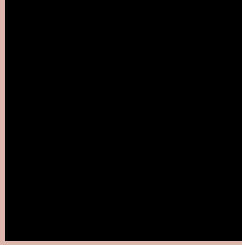
Any Text WCAG AA ✓ Pass

Large Text (above 18pt) WCAG AAA ✓ Pass

Any Text WCAG AAA ✓ Pass

If you want to check with other color combinations, try the [Color Contrast Checker](#).

Decimal 14530221 Background



This preview shows how black text looks on a background with the Decimal color 14530221.




This preview shows how white text looks on a background with the Decimal color 14530221.

Color Blindness Simulation

Color vision deficiency is a very complex topic, and I could not describe the different causes any better than Wikipedia does, so if you want to learn more, you should check out their [article about color blindness](#).

Dichromacy





Tritanopia
14660545

Trichromacy



Original Color
14530221

Protanomaly
13548464

Deuteranomaly
14333869

Tritanomaly
14595258

Monochromacy



Original Color
14530221

Achromatopsia
12698049

Achromatomaly
13352378

CSS Examples

Text

The CSS property to change the color of the text to Decimal 14530221 is called "color". The color property can be set on classes, ids or directly on the HTML element.

This example shows how text in the color #DDB6AD looks like.

```
.text, #text, p{  
    color:#DDB6AD  
}
```

If you want to add a text shadow in that color use the text-shadow property, you can generate a text shadow directly with our [CSS Text Shadow Generator](#).

Here you see how black text with a 4 pixel #DDB6AD colored shadow looks like.

```
.shadow{ text-shadow: 4px 4px 2px #DDB6AD } }
```

Border

The CSS property to change the border of an element to Decimal 14530221 is called "border". The border property can be set on classes, ids or directly on the HTML element.

This example shows the color as border, it can be applied via the CSS property "border" or "border-color".

```
.border, #border, table{ border:4px solid #DDB6AD } }
```

If only the border color should be changed use the property `border-color`.

```
.border{ border-color:#DDB6AD }
```

If you want to add a box shadow in that color use:

Here you see how a box with a 4 pixel #DDB6AD colored shadow looks like.

```
.boxshadow{ -moz-box-shadow:4px 4px 4px  
4px #DDB6AD; -webkit-box-shadow:4px 4px  
4px 4px #DDB6AD; box-shadow:4px 4px 4px  
4px #DDB6AD }
```

Background

The CSS property to change the background color of an element to Decimal 14530221 is called "background". The background property can be set on classes, ids or directly on the HTML element.

```
.background, #background, body{  
background:#DDB6AD }
```

If only the background color should be changed can be used:

```
.background{ background-color:#DDB6AD }
```

This example shows the color as background, it is applied via the CSS property "background".

To optimize and compress your CSS code, you can use our [online CSS compressor and optimizer](#) based on csstidy. If you want to create a linear or radial gradient as background or border, check our [CSS Gradient Generator](#).

Hey! You found this booklet interesting? Support Converting Colors with the new Membership Option!

The pro membership hides all ads, plus gives you double the colors in the color bucket, and more awesome pro features!

[Learn more, Memberships starting at \\$2.50/m!](#)

**Follow me
on Twitter!**

@ConvertingColor