

Converting Colors

Decimal(14530711)

Have a look what the booklet for
Decimal(14530711) contains.

Decimal(14530711)	3
<i>Conversions</i>	4
<i>Details</i>	6
<i>Harmonies</i>	11
<i>Previews</i>	23
<i>Color Blindness Simulation</i>	26
<i>CSS Examples</i>	29

Color

Decimal(14530711)

Conversions

Conversions Part 1

Format	Color
Hex	DDB897
RGB	221, 184, 151
RGB Percent	87%, 72%, 59%
CMY	0.1333, 0.2784, 0.4078
CMYK	0.00, 0.17, 0.32, 0.13
HSL	28°, 51%, 73%
HSV	28°, 32%, 87%
XYZ	52.5452, 51.8875, 36.5240
YIQ	191.3010, 32.6450, -2.4190

Conversions

Conversions Part 2

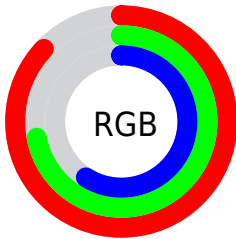
Format	Color
R _Y B	221, 213, 151
Decimal	14530711
CIE Lab	77.21, 8.58, 21.75
CIE LCh	77, 23.380, 68.469
Yxy	51.8875, 0.3728, 0.3681
Android (android.graphics.Color)	4292720791 (0xFFDDB897)
YUV	191.3010, -19.8684, 26.0460
Hunter-Lab	72.0330, 4.1510, 20.3603

Details

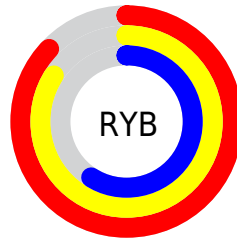
The Decimal color **14530711** is a light color, and the websafe version is hex **FFCC99**. A complement of this color would be **9944285**, and the grayscale version is **12566463**.

A 20% lighter version of the original color is **16773325**, and **10847076** is the 20% darker color. If you saturate the color by 10%, you get **14527617**, and if you desaturate by 10%, it is **14533805**.

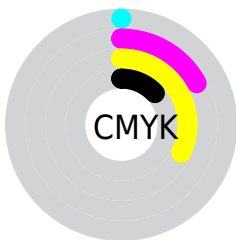
Distribution



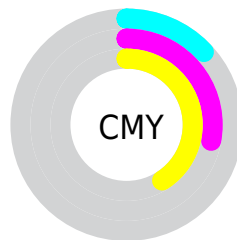
- Red (87%)
- Green (72%)
- Blue (59%)



- Red (87%)
- Yellow (84%)
- Blue (59%)



- Cyan (0%)
- Magenta (17%)
- Yellow (32%)
- Black (13%)



- Cyan (13%)
- Magenta (28%)
- Yellow (41%)

Brightness & Saturation Gradients

These gradients show how the Decimal color 14530711 changes by changing the brightness by 10 percent. The first figure shows a shift by +10% for each color and the second figure -10%.

Similar to the brightness gradients but the following saturation gradients show a change of the Decimal color 14530711 by changing the saturation by 10% instead.

 14530711

 14530711

16777215

 12688765

 16773325

 10847076

 16777194

 9071180

 7295541

 5651231

 4007176

 2494720

 0

 14530711

 14530711

 14527617

 14533805

 14524779

 14536643

 14521685

 14539737

 14518591

 14542831

 14515753

 14545663

 14512658

 14548735

 14510080

 14548991

Harmonies

Analogous

The Analogous color harmony consists of three colors that are next to each other on the color wheel.



15315621



14530711



13221780

Triad

The Triadic color harmony groups three colors that are evenly spaced from another and form a triangle on the color wheel.



14530711



8833988



13285345

Complementary

The Complementary color scheme is a pair of colors which are on the opposite of each other on the color wheel.



14530711



9944285

Split Complementary

Split-complementary colors differ from the complementary color scheme. The scheme consists of three colors, the original color and two neighbors of the complement color.



11386857



14530711



8637145

Square

The Square scheme is like the rectangle color scheme, but the four colors are evenly spaced on the color wheel.



14530711



10013358



9618918



14725583

Rectangle

The Rectangle color scheme consists of four colors that form a rectangle on the color wheel.



14530711



12174488



9618918



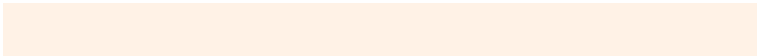
12696293

Sweetspot

The Sweet Spot groups the original color and five complimentary colors.



14530711



16773862



14522300



8419184



0



8421504

Same Dimension

The Same Dimension uses a secret algorithm to generate beautiful new colors.



14530711



16764062



14539671



7235683



11358720



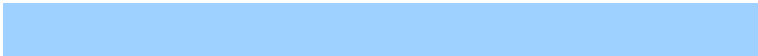
3020288

Inverse Universe

The Inverse Universe completely reimagines the original color for something new.



9944285



10408447



9935325



6514798



23725



6190

Previews

White Background



This preview shows how the Decimal color 14530711 looks on a white background.

Color Contrast Check

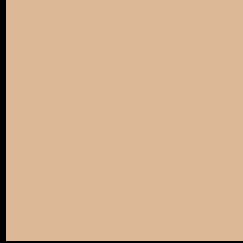
Large Text (above 18pt) WCAG AA × Fail

Any Text WCAG AA × Fail

Large Text (above 18pt) WCAG AAA × Fail

Any Text WCAG AAA × Fail

Black Background



This preview shows how the Decimal color 14530711 looks on a black background.

Color Contrast Check

Large Text (above 18pt) WCAG AA ✓ Pass

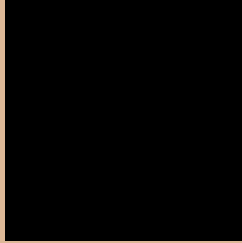
Any Text WCAG AA ✓ Pass

Large Text (above 18pt) WCAG AAA ✓ Pass

Any Text WCAG AAA ✓ Pass

If you want to check with other color combinations, try the [Color Contrast Checker](#).

Decimal 14530711 Background



This preview shows how black text looks on a background with the Decimal color 14530711.




This preview shows how white text looks on a background with the Decimal color 14530711.

Color Blindness Simulation

Color vision deficiency is a very complex topic, and I could not describe the different causes any better than Wikipedia does, so if you want to learn more, you should check out their [article about color blindness](#).

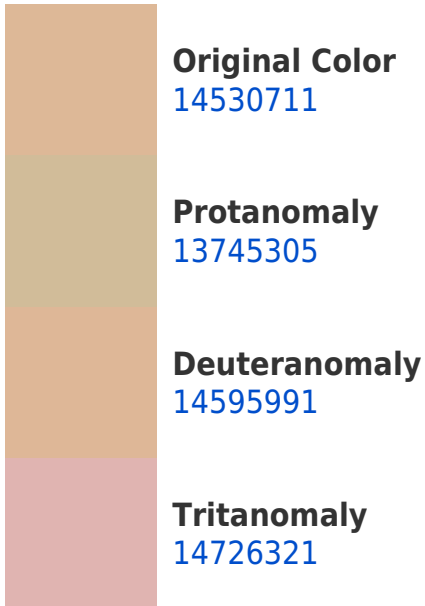
Dichromacy





Tritanopia
14856896

Trichromacy



Monochromacy



CSS Examples

Text

The CSS property to change the color of the text to Decimal 14530711 is called "color". The color property can be set on classes, ids or directly on the HTML element.

This example shows how text in the color #DDB897 looks like.

```
.text, #text, p{  
    color:#DDB897  
}
```

If you want to add a text shadow in that color use the text-shadow property, you can generate a text shadow directly with our [CSS Text Shadow Generator](#).

Here you see how black text with a 4 pixel #DDB897 colored shadow looks like.

```
.shadow{ text-shadow: 4px 4px 2px #DDB897  
}
```

Border

The CSS property to change the border of an element to Decimal 14530711 is called "border". The border property can be set on classes, ids or directly on the HTML element.

This example shows the color as border, it can be applied via the CSS property "border" or "border-color".

```
.border, #border, table{ border:4px solid  
#DDB897 }
```

If only the border color should be changed use the property `border-color`.

```
.border{ border-color:#DDB897 }
```

If you want to add a box shadow in that color use:

Here you see how a box with a 4 pixel #DDB897 colored shadow looks like.

```
.boxshadow{ -moz-box-shadow:4px 4px 4px  
4px #DDB897; -webkit-box-shadow:4px 4px  
4px 4px #DDB897; box-shadow:4px 4px 4px  
4px #DDB897 }
```

Background

The CSS property to change the background color of an element to Decimal 14530711 is called "background". The background property can be set on classes, ids or directly on the HTML element.

```
.background, #background, body{  
background:#DDB897 }
```

If only the background color should be changed can be used:

```
.background{ background-color:#DDB897 }
```

This example shows the color as background, it is applied via the CSS property "background".

To optimize and compress your CSS code, you can use our [online CSS compressor and optimizer](#) based on csstidy. If you want to create a linear or radial gradient as background or border, check our [CSS Gradient Generator](#).

Hey! You found this booklet interesting? Support Converting Colors with the new Membership Option!

The pro membership hides all ads, plus gives you double the colors in the color bucket, and more awesome pro features!

[Learn more, Memberships starting at \\$2.50/m!](#)

**Follow me
on Twitter!**

@ConvertingColor