

# Converting Colors

Decimal(14533030)

Have a look what the booklet for  
Decimal(14533030) contains.

<b>Decimal(14533030)</b> .....	3
<i><b>Conversions</b></i> .....	4
<i><b>Details</b></i> .....	6
<i><b>Harmonies</b></i> .....	11
<i><b>Previews</b></i> .....	23
<i><b>Color Blindness Simulation</b></i> .....	26
<i><b>CSS Examples</b></i> .....	29

# **Color**

**Decimal(14533030)**

# Conversions

## Conversions Part 1

Format	Color
Hex	DDC1A6
RGB	221, 193, 166
RGB Percent	87%, 76%, 65%
CMY	0.1333, 0.2431, 0.3490
CMYK	0.00, 0.13, 0.25, 0.13
HSL	29°, 45%, 76%
HSV	29°, 25%, 87%
XYZ	55.7717, 56.2653, 43.9972
YIQ	198.2940, 25.3550, -2.4610

# Conversions

## Conversions Part 2

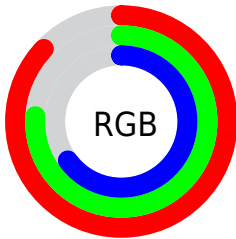
Format	Color
R <sub>Y</sub> B	221, 219, 166
Decimal	14533030
CIE Lab	79.76, 5.82, 17.25
CIE LCh	80, 18.206, 71.363
Yxy	56.2653, 0.3574, 0.3606
Android (android.graphics.Color)	4292723110 (0xFFDDC1A6)
YUV	198.2940, -15.9209, 19.9132
Hunter-Lab	75.0102, 1.4508, 17.7306

# Details

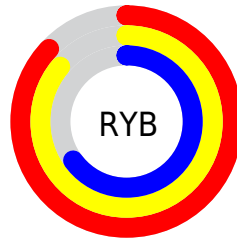
The Decimal color **14533030** is a light color, and the websafe version is hex **CCCC99**. A complement of this color would be **10928861**, and the grayscale version is **13027014**.

A 20% lighter version of the original color is **16775645**, and **10849394** is the 20% darker color. If you saturate the color by 10%, you get **14530192**, and if you desaturate by 10%, it is **14535868**.

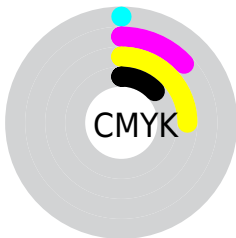
# Distribution



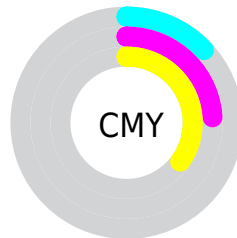
- Red (87%)
- Green (76%)
- Blue (65%)



- Red (87%)
- Yellow (86%)
- Blue (65%)



- Cyan (0%)
- Magenta (13%)
- Yellow (25%)
- Black (13%)



- Cyan (13%)
- Magenta (24%)
- Yellow (35%)

# Brightness & Saturation Gradients

These gradients show how the Decimal color 14533030 changes by changing the brightness by 10 percent. The first figure shows a shift by +10% for each color and the second figure -10%.

Similar to the brightness gradients but the following saturation gradients show a change of the Decimal color 14533030 by changing the saturation by 10% instead.



 14533030

 14533030

16777215

 12691084

 16775645

 10849394

 16777210

 9073241

 7363138

 5718572

 4140055

 2692864

 786432

 0

 14533030

 14533030

 14530192

 14535868

 14527098

 14538962

 14524260

 14541800

 14521422

 14544638

 14518584

 14547455

 14515489

 14548991

 14512651

 14511104

# Harmonies

## Analogous

The Analogous color harmony consists of three colors that are next to each other on the color wheel.



15187120



14533030



13420452

# Triad

The Triadic color harmony groups three colors that are evenly spaced from another and form a triangle on the color wheel.



14533030



10211532



13746143

# Complementary

The Complementary color scheme is a pair of colors which are on the opposite of each other on the color wheel.



14533030



10928861

# Split Complementary

Split-complementary colors differ from the complementary color scheme. The scheme consists of three colors, the original color and two neighbors of the complement color.



12305895



14533030



10145499

# Square

The Square scheme is like the rectangle color scheme, but the four colors are evenly spaced on the color wheel.



14533030



10997690



10996453



14793681

# Rectangle

The Rectangle color scheme consists of four colors that form a rectangle on the color wheel.



14533030



12634793



10996453



13287907



# Sweetspot

The Sweet Spot groups the original color and five complimentary colors.



14533030



16774893



14526146



8419957



0



8421504



# Same Dimension

The Same Dimension uses a secret algorithm to generate beautiful new colors.



14533030



16767155



14539942



7235683



11359488



3020544

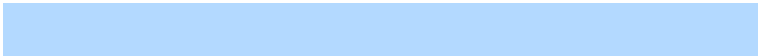


# Inverse Universe

The Inverse Universe completely reimagines the original color for something new.



10928861



11786751



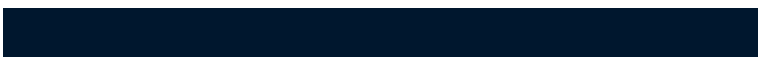
10921949



6514798



22701



5934



# Previews

## White Background



This preview shows how the Decimal color 14533030 looks on a white background.

## Color Contrast Check

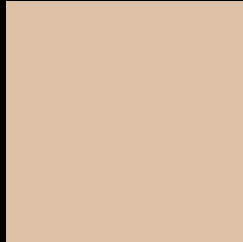
Large Text (above 18pt) WCAG AA × Fail

Any Text WCAG AA × Fail

Large Text (above 18pt) WCAG AAA × Fail

Any Text WCAG AAA × Fail

# Black Background



This preview shows how the Decimal color 14533030 looks on a black background.

## Color Contrast Check

Large Text (above 18pt) WCAG AA ✓ Pass

Any Text WCAG AA ✓ Pass

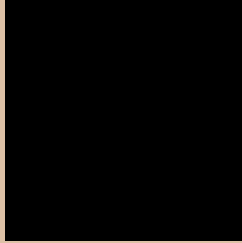
Large Text (above 18pt) WCAG AAA ✓ Pass

Any Text WCAG AAA ✓ Pass

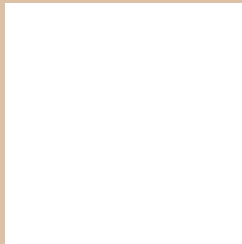
If you want to check with other color combinations, try the [Color Contrast Checker](#).



## Decimal 14533030 Background



This preview shows how black text looks on a background with the Decimal color 14533030.



This preview shows how white text looks on a background with the Decimal color 14533030.

# Color Blindness Simulation

Color vision deficiency is a very complex topic, and I could not describe the different causes any better than Wikipedia does, so if you want to learn more, you should check out their [article about color blindness](#).

## Dichromacy





**Tritanopia**  
14793930

# Trichromacy



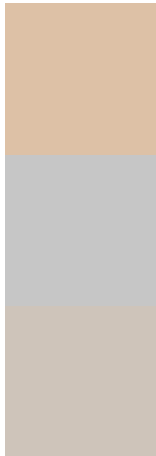
**Original Color**  
14533030

**Protanomaly**  
14009511

**Deuteranomaly**  
14794663

**Tritanomaly**  
14728893

# Monochromacy



**Original Color**  
14533030

**Achromatopsia**  
13027014

**Achromatomaly**  
13550778

# CSS Examples

## Text

The CSS property to change the color of the text to Decimal 14533030 is called "color". The color property can be set on classes, ids or directly on the HTML element.

This example shows how text in the color #DDC1A6 looks like.

```
.text, #text, p{  
  color:#DDC1A6  
}
```

If you want to add a text shadow in that color use the text-shadow property, you can generate a text shadow directly with our [CSS Text Shadow Generator](#).

Here you see how black text with a 4 pixel #DDC1A6 colored shadow looks like.

```
.shadow{ text-shadow: 4px 4px 2px #DDC1A6  
}
```

## Border

The CSS property to change the border of an element to Decimal 14533030 is called "border". The border property can be set on classes, ids or directly on the HTML element.

This example shows the color as border, it can be applied via the CSS property "border" or "border-color".

```
.border, #border, table{ border:4px solid  
#DDC1A6 }
```

If only the border color should be changed use the property `border-color`.

```
.border{ border-color:#DDC1A6 }
```

If you want to add a box shadow in that color use:

Here you see how a box with a 4 pixel #DDC1A6 colored shadow looks like.

```
.boxshadow{ -moz-box-shadow:4px 4px 4px  
4px #DDC1A6; -webkit-box-shadow:4px 4px  
4px 4px #DDC1A6; box-shadow:4px 4px 4px  
4px #DDC1A6 }
```

# Background

The CSS property to change the background color of an element to Decimal 14533030 is called "background". The background property can be set on classes, ids or directly on the HTML element.

```
.background, #background, body{  
background:#DDC1A6 }
```

If only the background color should be changed can be used:

```
.background{ background-color:#DDC1A6 }
```

This example shows the color as background, it is applied via the CSS property "background".

To optimize and compress your CSS code, you can use our [online CSS compressor and optimizer](#) based on csstidy. If you want to create a linear or radial gradient as background or border, check our [CSS Gradient Generator](#).



Hey! You found this booklet interesting? Support Converting Colors with the new Membership Option!

The pro membership hides all ads, plus gives you double the colors in the color bucket, and more awesome pro features!

**[Learn more, Memberships starting at \\$2.50/m!](#)**

**Follow me  
on Twitter!**

@ConvertingColor