

Converting Colors

Decimal(14533555)

Have a look what the booklet for
Decimal(14533555) contains.

Decimal(14533555)	3
<i>Conversions</i>	4
<i>Details</i>	6
<i>Harmonies</i>	11
<i>Previews</i>	23
<i>Color Blindness Simulation</i>	26
<i>CSS Examples</i>	29

Color

Decimal(14533555)

Conversions

Conversions Part 1

Format	Color
Hex	<code>#DDC3B3</code>
RGB	221, 195, 179
RGB Percent	87%, 76%, 70%
CMY	0.1333, 0.2353, 0.2980
CMYK	0.00, 0.12, 0.19, 0.13
HSL	23°, 38%, 78%
HSV	23°, 19%, 87%
XYZ	57.4706, 57.6570, 50.7477
YIQ	200.9500, 20.6320, 0.5360

Conversions

Conversions Part 2

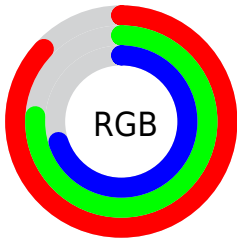
Format	Color
R _Y B	221, 205, 179
Decimal	14533555
CIE Lab	80.55, 6.65, 11.40
CIE LCh	81, 13.194, 59.735
Yxy	57.6570, 0.3465, 0.3476
Android (android.graphics.Color)	4292723635 (0xFFDDC3B3)
YUV	200.9500, -10.8213, 17.5839
Hunter-Lab	75.9322, 2.2193, 13.5273

Details

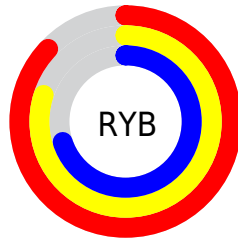
The Decimal color **14533555** is a light color, and the websafe version is hex **CCCCCC**. A complement of this color would be **11783645**, and the grayscale version is **13224393**.

A 20% lighter version of the original color is **16776427**, and **10915198** is the 20% darker color. If you saturate the color by 10%, you get **14529949**, and if you desaturate by 10%, it is **14537161**.

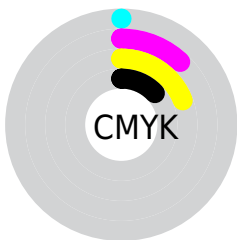
Distribution



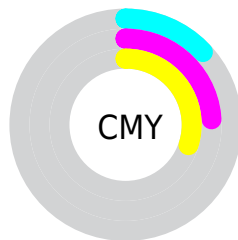
- Red (87%)
- Green (76%)
- Blue (70%)



- Red (87%)
- Yellow (80%)
- Blue (70%)



- Cyan (0%)
- Magenta (12%)
- Yellow (19%)
- Black (13%)



- Cyan (13%)
- Magenta (24%)
- Yellow (30%)

Brightness & Saturation Gradients

These gradients show how the Decimal color 14533555 changes by changing the brightness by 10 percent. The first figure shows a shift by +10% for each color and the second figure -10%.

Similar to the brightness gradients but the following saturation gradients show a change of the Decimal color 14533555 by changing the saturation by 10% instead.

 14533555

 14533555

16777215

 12691608

 16776427

 10915198

 9139301

 7428941

 5784631

 4206113

 2758923

 1179648

 0

 14533555

 14533555

 14529949

 14537161

 14526599

 14540511

 14522993

 14544117

 14519387

 14547711

 14516037

 14548991

 14512430

 14508824

 14505474

 14504960

Harmonies

Analogous

The Analogous color harmony consists of three colors that are next to each other on the color wheel.



14860476



14533555



13813679

Triad

The Triadic color harmony groups three colors that are evenly spaced from another and form a triangle on the color wheel.



14533555



11325383



13288925

Complementary

The Complementary color scheme is a pair of colors which are on the opposite of each other on the color wheel.



14533555



11783645

Split Complementary

Split-complementary colors differ from the complementary color scheme. The scheme consists of three colors, the original color and two neighbors of the complement color.



12306912



14533555



11128788

Square

The Square scheme is like the rectangle color scheme, but the four colors are evenly spaced on the color wheel.



14533555



12046011



11455965



14205396

Rectangle

The Rectangle color scheme consists of four colors that form a rectangle on the color wheel.



14533555



13224625



11455965



12961503

Sweetspot

The Sweet Spot groups the original color and five complimentary colors.



14533555



16774896



14529486



8419959



0



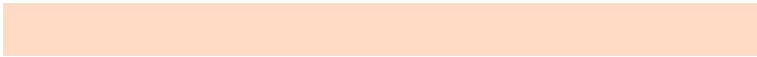
8421504

Same Dimension

The Same Dimension uses a secret algorithm to generate beautiful new colors.



14533555



16767940



14538675



7235427



11354624



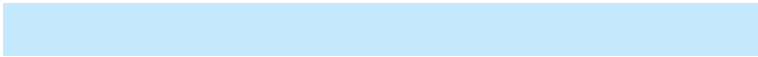
3019008

Inverse Universe

The Inverse Universe completely reimagines the original color for something new.



11783645



12904959



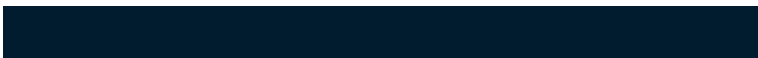
11778525



6515054



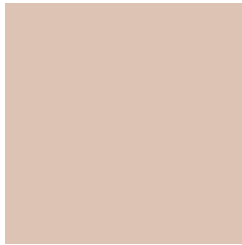
27565



7214

Previews

White Background



This preview shows how the Decimal color 14533555 looks on a white background.

Color Contrast Check

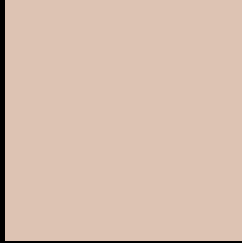
Large Text (above 18pt) WCAG AA × Fail

Any Text WCAG AA × Fail

Large Text (above 18pt) WCAG AAA × Fail

Any Text WCAG AAA × Fail

Black Background



This preview shows how the Decimal color 14533555 looks on a black background.

Color Contrast Check

Large Text (above 18pt) WCAG AA ✓ Pass

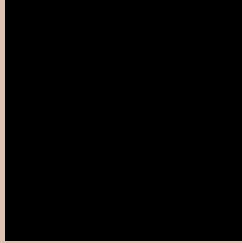
Any Text WCAG AA ✓ Pass

Large Text (above 18pt) WCAG AAA ✓ Pass

Any Text WCAG AAA ✓ Pass

If you want to check with other color combinations, try the [Color Contrast Checker](#).

Decimal 14533555 Background



This preview shows how black text looks on a background with the Decimal color 14533555.



This preview shows how white text looks on a background with the Decimal color 14533555.

Color Blindness Simulation

Color vision deficiency is a very complex topic, and I could not describe the different causes any better than Wikipedia does, so if you want to learn more, you should check out their [article about color blindness](#).

Dichromacy



Original Color
14533555

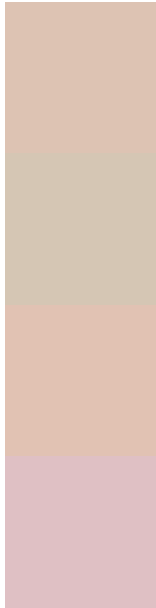
Protanopia
13682613

Deuteranopia
14926259



Tritanopia
14729166

Trichromacy



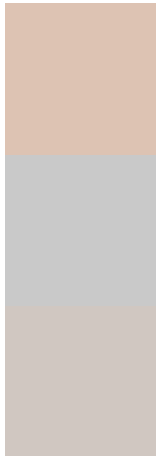
Original Color
14533555

Protanomaly
14010036

Deuteranomaly
14795443

Tritanomaly
14663876

Monochromacy



Original Color
14533555

Achromatopsia
13224393

Achromatomaly
13682625

CSS Examples

Text

The CSS property to change the color of the text to Decimal 14533555 is called "color". The color property can be set on classes, ids or directly on the HTML element.

This example shows how text in the color #DDC3B3 looks like.

```
.text, #text, p{  
    color:#DDC3B3  
}
```

If you want to add a text shadow in that color use the text-shadow property, you can generate a text shadow directly with our [CSS Text Shadow Generator](#).

Here you see how black text with a 4 pixel #DDC3B3 colored shadow looks like.

```
.shadow{ text-shadow: 4px 4px 2px #DDC3B3
}
```

Border

The CSS property to change the border of an element to Decimal 14533555 is called "border". The border property can be set on classes, ids or directly on the HTML element.

This example shows the color as border, it can be applied via the CSS property "border" or "border-color".

```
.border, #border, table{ border:4px solid
#DDC3B3 }
```

If only the border color should be changed use the property `border-color`.

```
.border{ border-color:#DDC3B3 }
```

If you want to add a box shadow in that color use:

Here you see how a box with a 4 pixel #DDC3B3 colored shadow looks like.

```
.boxshadow{ -moz-box-shadow:4px 4px 4px  
4px #DDC3B3; -webkit-box-shadow:4px 4px  
4px 4px #DDC3B3; box-shadow:4px 4px 4px  
4px #DDC3B3 }
```

Background

The CSS property to change the background color of an element to Decimal 14533555 is called "background". The background property can be set on classes, ids or directly on the HTML element.

```
.background, #background, body{  
background:#DDC3B3 }
```

If only the background color should be changed can be used:

```
.background{ background-color:#DDC3B3 }
```

This example shows the color as background, it is applied via the CSS property "background".

To optimize and compress your CSS code, you can use our [online CSS compressor and optimizer](#) based on csstidy. If you want to create a linear or radial gradient as background or border, check our [CSS Gradient Generator](#).

Hey! You found this booklet interesting? Support Converting Colors with the new Membership Option!

The pro membership hides all ads, plus gives you double the colors in the color bucket, and more awesome pro features!

[Learn more, Memberships starting at \\$2.50/m!](#)

**Follow me
on Twitter!**

@ConvertingColor