

Converting Colors

Decimal(14533565)

Have a look what the booklet for
Decimal(14533565) contains.

Decimal(14533565)	3
<i>Conversions</i>	4
<i>Details</i>	6
<i>Harmonies</i>	11
<i>Previews</i>	23
<i>Color Blindness Simulation</i>	26
<i>CSS Examples</i>	29

Color

Decimal(14533565)

Conversions

Conversions Part 1

Format	Color
Hex	DDC3BD
RGB	221, 195, 189
RGB Percent	87%, 76%, 74%
CMY	0.1333, 0.2353, 0.2588
CMYK	0.00, 0.12, 0.14, 0.13
HSL	11°, 32%, 80%
HSV	11°, 14%, 87%
XYZ	58.5192, 58.0765, 56.2697
YIQ	202.0900, 17.4220, 3.6460

Conversions

Conversions Part 2

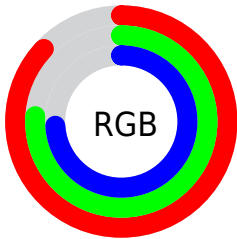
Format	Color
R _Y B	221, 196, 189
Decimal	14533565
CIE Lab	80.78, 8.20, 6.37
CIE LCh	81, 10.381, 37.830
Yxy	58.0765, 0.3385, 0.3360
Android (android.graphics.Color)	4292723645 (0xFFDDC3BD)
YUV	202.0900, -6.4534, 16.5841
Hunter-Lab	76.2079, 3.7042, 9.5676

Details

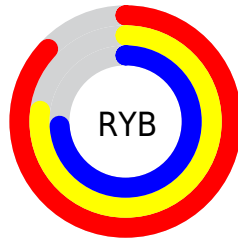
The Decimal color **14533565** is a light color, and the websafe version is hex **CCCCCC**. A complement of this color would be **12441565**, and the grayscale version is **13290186**.

A 20% lighter version of the original color is **16776437**, and **10915208** is the 20% darker color. If you saturate the color by 10%, you get **14528935**, and if you desaturate by 10%, it is **14538195**.

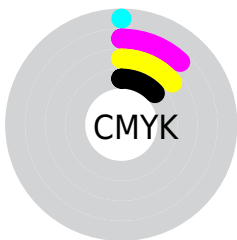
Distribution



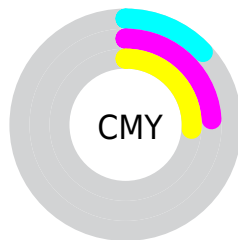
- Red (87%)
- Green (76%)
- Blue (74%)



- Red (87%)
- Yellow (77%)
- Blue (74%)



- Cyan (0%)
- Magenta (12%)
- Yellow (14%)
- Black (13%)



- Cyan (13%)
- Magenta (24%)
- Yellow (26%)

Brightness & Saturation Gradients

These gradients show how the Decimal color 14533565 changes by changing the brightness by 10 percent. The first figure shows a shift by +10% for each color and the second figure -10%.

Similar to the brightness gradients but the following saturation gradients show a change of the Decimal color 14533565 by changing the saturation by 10% instead.

 14533565

 14533565

16777215

 12691618

 16776437

 10915208

 9139310

 7428950

 5850175

 4271401

 2758933

 1441792

 0

 14533565

 14533565

 14528935

 14538195

 14524305

 14542825

 14519675

 14547455

 14515045

 14548991

 14510414

 14505784

 14501154

 14496524

 14493952

Harmonies

Analogous

The Analogous color harmony consists of three colors that are next to each other on the color wheel.



14533318



14533565



14140855

Triad

The Triadic color harmony groups three colors that are evenly spaced from another and form a triangle on the color wheel.



14533565



12111553



12765404

Complementary

The Complementary color scheme is a pair of colors which are on the opposite of each other on the color wheel.



14533565



12441565

Split Complementary

Split-complementary colors differ from the complementary color scheme. The scheme consists of three colors, the original color and two neighbors of the complement color.



12045530



14533565



11718347

Square

The Square scheme is like the rectangle color scheme, but the four colors are evenly spaced on the color wheel.



14533565



12831929



11652820



13551064

Rectangle

The Rectangle color scheme consists of four colors that form a rectangle on the color wheel.



14533565



13813941



11652820



12503772

Sweetspot

The Sweet Spot groups the original color and five complimentary colors.



14533565



16775157



14532055



8419961



0



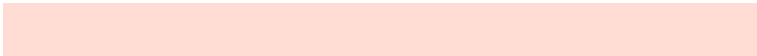
8421504

Same Dimension

The Same Dimension uses a secret algorithm to generate beautiful new colors.



14533565



16768212



14537661



7234915



11346176



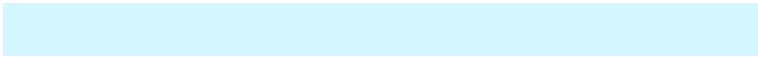
3016960

Inverse Universe

The Inverse Universe completely reimagines the original color for something new.



12441565



13957119



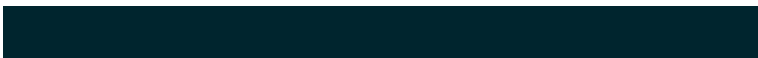
12437469



6515822



36269



9518

Previews

White Background



This preview shows how the Decimal color 14533565 looks on a white background.

Color Contrast Check

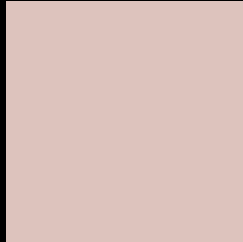
Large Text (above 18pt) WCAG AA × Fail

Any Text WCAG AA × Fail

Large Text (above 18pt) WCAG AAA × Fail

Any Text WCAG AAA × Fail

Black Background



This preview shows how the Decimal color 14533565 looks on a black background.

Color Contrast Check

Large Text (above 18pt) WCAG AA ✓ Pass

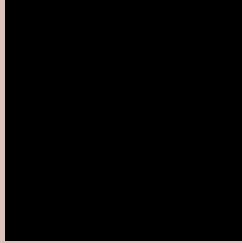
Any Text WCAG AA ✓ Pass

Large Text (above 18pt) WCAG AAA ✓ Pass

Any Text WCAG AAA ✓ Pass

If you want to check with other color combinations, try the [Color Contrast Checker](#).

Decimal 14533565 Background



This preview shows how black text looks on a background with the Decimal color 14533565.



This preview shows how white text looks on a background with the Decimal color 14533565.

Color Blindness Simulation

Color vision deficiency is a very complex topic, and I could not describe the different causes any better than Wikipedia does, so if you want to learn more, you should check out their [article about color blindness](#).


Dichromacy



Original Color
14533565

Protanopia
13551808

Deuteranopia
14729917



Tritanopia
14663887

Trichromacy



Original Color
14533565

Protanomaly
13878975

Deuteranomaly
14664381

Tritanomaly
14598600

Monochromacy



Original Color
14533565

Achromatopsia
13290186

Achromatomaly
13748165

CSS Examples

Text

The CSS property to change the color of the text to Decimal 14533565 is called "color". The color property can be set on classes, ids or directly on the HTML element.

This example shows how text in the color #DDC3BD looks like.

```
.text, #text, p{  
    color:#DDC3BD  
}
```

If you want to add a text shadow in that color use the text-shadow property, you can generate a text shadow directly with our [CSS Text Shadow Generator](#).

Here you see how black text with a 4 pixel #DDC3BD colored shadow looks like.

```
.shadow{ text-shadow: 4px 4px 2px #DDC3BD
}
```

Border

The CSS property to change the border of an element to Decimal 14533565 is called "border". The border property can be set on classes, ids or directly on the HTML element.

This example shows the color as border, it can be applied via the CSS property "border" or "border-color".

```
.border, #border, table{ border:4px solid
#DDC3BD }
```

If only the border color should be changed use the property `border-color`.

```
.border{ border-color:#DDC3BD }
```

If you want to add a box shadow in that color use:

Here you see how a box with a 4 pixel #DDC3BD colored shadow looks like.

```
.boxshadow{ -moz-box-shadow:4px 4px 4px  
4px #DDC3BD; -webkit-box-shadow:4px 4px  
4px 4px #DDC3BD; box-shadow:4px 4px 4px  
4px #DDC3BD }
```

Background

The CSS property to change the background color of an element to Decimal 14533565 is called "background". The background property can be set on classes, ids or directly on the HTML element.

```
.background, #background, body{  
background:#DDC3BD }
```

If only the background color should be changed can be used:

```
.background{ background-color:#DDC3BD }
```

This example shows the color as background, it is applied via the CSS property "background".

To optimize and compress your CSS code, you can use our [online CSS compressor and optimizer](#) based on csstidy. If you want to create a linear or radial gradient as background or border, check our [CSS Gradient Generator](#).

Hey! You found this booklet interesting? Support Converting Colors with the new Membership Option!

The pro membership hides all ads, plus gives you double the colors in the color bucket, and more awesome pro features!

[Learn more, Memberships starting at \\$2.50/m!](#)

**Follow me
on Twitter!**

@ConvertingColor