

Converting Colors

Decimal(14533816)

Have a look what the booklet for
Decimal(14533816) contains.

Decimal(14533816)	3
<i>Conversions</i>	4
<i>Details</i>	6
<i>Harmonies</i>	11
<i>Previews</i>	23
<i>Color Blindness Simulation</i>	26
<i>CSS Examples</i>	29

Color

Decimal(14533816)

Conversions

Conversions Part 1

Format	Color
Hex	DDC4B8
RGB	221, 196, 184
RGB Percent	87%, 77%, 72%
CMY	0.1333, 0.2314, 0.2784
CMYK	0.00, 0.11, 0.17, 0.13
HSL	19°, 35%, 79%
HSV	19°, 17%, 87%
XYZ	58.2105, 58.3127, 53.5349
YIQ	202.1070, 18.7520, 1.5680

Conversions

Conversions Part 2

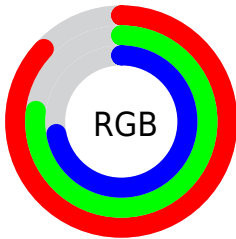
Format	Color
RYB	221, 202, 184
Decimal	14533816
CIELab	80.91, 6.89, 9.24
CIElCh	81, 11.520, 53.298
Yxy	58.3127, 0.3423, 0.3429
Android (android.graphics.Color)	4292723896 (0xFFDDC4B8)
YUV	202.1070, -8.9268, 16.5692
Hunter-Lab	76.3628, 2.4337, 11.8881

Details

The Decimal color **14533816** is a light color, and the websafe version is hex **CCCCCC**. A complement of this color would be **12112349**, and the grayscale version is **13290186**.

A 20% lighter version of the original color is **16776688**, and **10915459** is the 20% darker color. If you saturate the color by 10%, you get **14529954**, and if you desaturate by 10%, it is **14537678**.

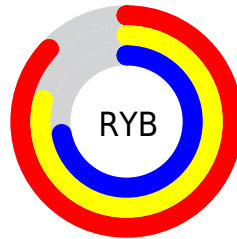
Distribution



Red (87%)

Green (77%)

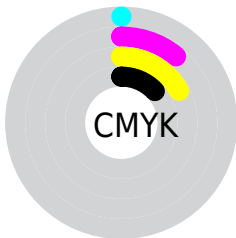
Blue (72%)



Red (87%)

Yellow (79%)

Blue (72%)

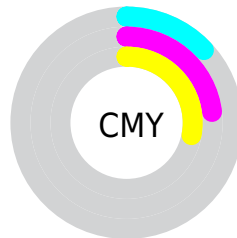


Cyan (0%)

Magenta (11%)

Yellow (17%)

Black (13%)



Cyan (13%)

Magenta (23%)

Yellow (28%)

Brightness & Saturation Gradients

These gradients show how the Decimal color 14533816 changes by changing the brightness by 10 percent. The first figure shows a shift by +10% for each color and the second figure -10%.

Similar to the brightness gradients but the following saturation gradients show a change of the Decimal color 14533816 by changing the saturation by 10% instead.

 14533816

 14533816

16777215

 12691869

 16776688

 10915459

 9139562

 7429202

 5784891

 4271653

 2759184

 1310720

 0

14533816

14533816

14529954

14537678

14526092

14541540

14522230

14545402

14518368

14548991

14514506

14510643

14506781

14503175

14501888

Harmonies

Analogous

The Analogous color harmony consists of three colors that are next to each other on the color wheel.



14729921



14533816



13944756

Triad

The Triadic color harmony groups three colors that are evenly spaced from another and form a triangle on the color wheel.



14533816



11718598



13158365

Complementary

The Complementary color scheme is a pair of colors which are on the opposite of each other on the color wheel.



14533816



12112349

Split Complementary

Split-complementary colors differ from the complementary color scheme. The scheme consists of three colors, the original color and two neighbors of the complement color.



12307422



14533816



11456465

Square

The Square scheme is like the rectangle color scheme, but the four colors are evenly spaced on the color wheel.



14533816



12373692



11652826



14009558

Rectangle

The Rectangle color scheme consists of four colors that form a rectangle on the color wheel.



14533816



13486772



11652826



12896478

Sweetspot

The Sweet Spot groups the original color and five complimentary colors.



14533816



16774898



14530769



8419960



0



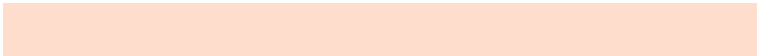
8421504

Same Dimension

The Same Dimension uses a secret algorithm to generate beautiful new colors.



14533816



16768460



14538424



7235171



11352064



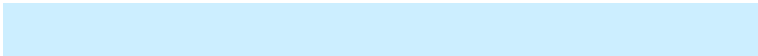
3018496

Inverse Universe

The Inverse Universe completely reimagines the original color for something new.



12112349



13430527



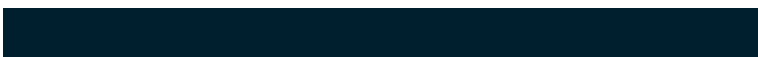
12107741



6515310



30125



7982

Previews

White Background



This preview shows how the Decimal color 14533816 looks on a white background.

Color Contrast Check

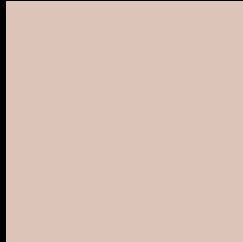
Large Text (above 18pt) WCAG AA × Fail

Any Text WCAG AA × Fail

Large Text (above 18pt) WCAG AAA × Fail

Any Text WCAG AAA × Fail

Black Background



This preview shows how the Decimal color 14533816 looks on a black background.

Color Contrast Check

Large Text (above 18pt) WCAG AA ✓ Pass

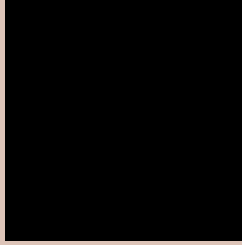
Any Text WCAG AA ✓ Pass

Large Text (above 18pt) WCAG AAA ✓ Pass

Any Text WCAG AAA ✓ Pass

If you want to check with other color combinations, try the [Color Contrast Checker](#).

Decimal 14533816 Background



This preview shows how black text looks on a background with the Decimal color 14533816.



This preview shows how white text looks on a background with the Decimal color 14533816.

Color Blindness Simulation

Color vision deficiency is a very complex topic, and I could not describe the different causes any better than Wikipedia does, so if you want to learn more, you should check out their [article about color blindness](#).

Dichromacy





Tritanopia
14729424

Trichromacy



Original Color
14533816

Protanomaly
14010297

Deuteranomaly
14795704

Tritanomaly
14664135

Monochromacy



Original Color
14533816

Achromatopsia
13290186

Achromatomaly
13748419

CSS Examples

Text

The CSS property to change the color of the text to Decimal 14533816 is called "color". The color property can be set on classes, ids or directly on the HTML element.

This example shows how text in the color #DDC4B8 looks like.

```
.text, #text, p{  
    color:#DDC4B8  
}
```

If you want to add a text shadow in that color use the text-shadow property, you can generate a text shadow directly with our [CSS Text Shadow Generator](#).

Here you see how black text with a 4 pixel #DDC4B8 colored shadow looks like.

```
.shadow{ text-shadow: 4px 4px 2px #DDC4B8
}
```

Border

The CSS property to change the border of an element to Decimal 14533816 is called "border". The border property can be set on classes, ids or directly on the HTML element.

This example shows the color as border, it can be applied via the CSS property "border" or "border-color".

```
.border, #border, table{ border:4px solid
#DDC4B8 }
```

If only the border color should be changed use the property `border-color`.

```
.border{ border-color:#DDC4B8 }
```

If you want to add a box shadow in that color use:

Here you see how a box with a 4 pixel #DDC4B8 colored shadow looks like.

```
.boxshadow{ -moz-box-shadow:4px 4px 4px  
4px #DDC4B8; -webkit-box-shadow:4px 4px  
4px 4px #DDC4B8; box-shadow:4px 4px 4px  
4px #DDC4B8 }
```

Background

The CSS property to change the background color of an element to Decimal 14533816 is called "background". The background property can be set on classes, ids or directly on the HTML element.

```
.background, #background, body{  
background:#DDC4B8 }
```

If only the background color should be changed can be used:

```
.background{ background-color:#DDC4B8 }
```

This example shows the color as background, it is applied via the CSS property "background".

To optimize and compress your CSS code, you can use our [online CSS compressor and optimizer](#) based on csstidy. If you want to create a linear or radial gradient as background or border, check our [CSS Gradient Generator](#).

Hey! You found this booklet interesting? Support Converting Colors with the new Membership Option!

The pro membership hides all ads, plus gives you double the colors in the color bucket, and more awesome pro features!

[Learn more, Memberships starting at \\$2.50/m!](#)

**Follow me
on Twitter!**

@ConvertingColor