

Converting Colors

Decimal(14533821)

Have a look what the booklet for
Decimal(14533821) contains.

Decimal(14533821)	3
<i>Conversions</i>	4
<i>Details</i>	6
<i>Harmonies</i>	11
<i>Previews</i>	23
<i>Color Blindness Simulation</i>	26
<i>CSS Examples</i>	29

Color

Decimal(14533821)

Conversions

Conversions Part 1

Format	Color
Hex	DDC4BD
RGB	221, 196, 189
RGB Percent	87%, 77%, 74%
CMY	0.1333, 0.2314, 0.2588
CMYK	0.00, 0.11, 0.14, 0.13
HSL	13°, 32%, 80%
HSV	13°, 14%, 87%
XYZ	58.7440, 58.5261, 56.3446
YIQ	202.6770, 17.1470, 3.1230

Conversions

Conversions Part 2

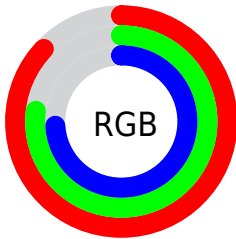
Format	Color
RYB	221, 198, 189
Decimal	14533821
CIELab	81.03, 7.67, 6.73
CIELCh	81, 10.200, 41.247
Yxy	58.5261, 0.3384, 0.3371
Android (android.graphics.Color)	4292723901 (0xFFDDC4BD)
YUV	202.6770, -6.7428, 16.0693
Hunter-Lab	76.5024, 3.1860, 9.8841

Details

The Decimal color **14533821** is a light color, and the websafe version is hex **CCCCCC**. A complement of this color would be **12441309**, and the grayscale version is **13355979**.

A 20% lighter version of the original color is **16776693**, and **10915464** is the 20% darker color. If you saturate the color by 10%, you get **14529447**, and if you desaturate by 10%, it is **14538195**.

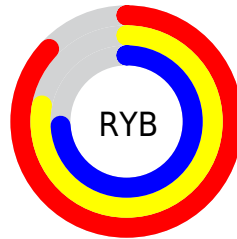
Distribution



Red (87%)

Green (77%)

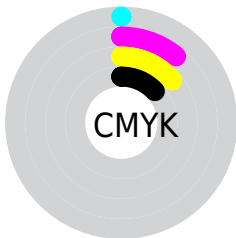
Blue (74%)



Red (87%)

Yellow (78%)

Blue (74%)

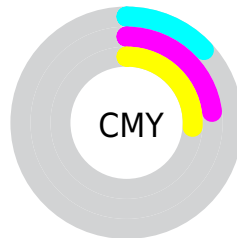


Cyan (0%)

Magenta (11%)

Yellow (14%)

Black (13%)



Cyan (13%)

Magenta (23%)

Yellow (26%)

Brightness & Saturation Gradients

These gradients show how the Decimal color 14533821 changes by changing the brightness by 10 percent. The first figure shows a shift by +10% for each color and the second figure -10%.

Similar to the brightness gradients but the following saturation gradients show a change of the Decimal color 14533821 by changing the saturation by 10% instead.



 14533821

 14533821

 14529447

 14538195

 14524817

 14542825

 14520443

 14547199

 14516069

 14548991

 14511694

 14507064

 14502690

 14498316

 14495744

Harmonies

Analogous

The Analogous color harmony consists of three colors that are next to each other on the color wheel.



14599110



14533821



14141367

Triad

The Triadic color harmony groups three colors that are evenly spaced from another and form a triangle on the color wheel.



14533821



12111555



12896732

Complementary

The Complementary color scheme is a pair of colors which are on the opposite of each other on the color wheel.



14533821



12441309

Split Complementary

Split-complementary colors differ from the complementary color scheme. The scheme consists of three colors, the original color and two neighbors of the complement color.



12176603



14533821



11718605

Square

The Square scheme is like the rectangle color scheme, but the four colors are evenly spaced on the color wheel.



14533821



12766651



11783893



13682392

Rectangle

The Rectangle color scheme consists of four colors that form a rectangle on the color wheel.



14533821



13748662



11783893



12634844

Sweetspot

The Sweet Spot groups the original color and five complimentary colors.



14533821



16775157



14532054



8420217



0



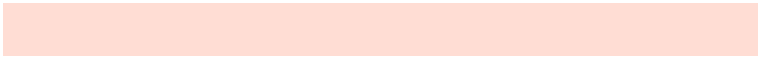
8421504

Same Dimension

The Same Dimension uses a secret algorithm to generate beautiful new colors.



14533821



16768468



14537917



7234915



11347456



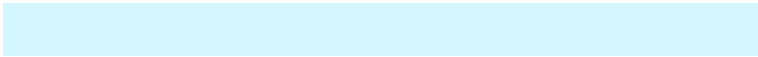
3017216

Inverse Universe

The Inverse Universe completely reimagines the original color for something new.



12441309



13956863



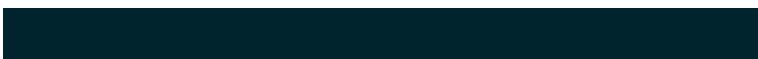
12437213



6515566



34733



9262

Previews

White Background



This preview shows how the Decimal color 14533821 looks on a white background.

Color Contrast Check

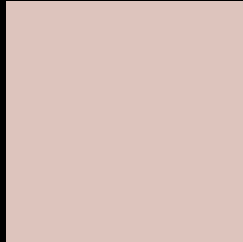
Large Text (above 18pt) WCAG AA × Fail

Any Text WCAG AA × Fail

Large Text (above 18pt) WCAG AAA × Fail

Any Text WCAG AAA × Fail

Black Background



This preview shows how the Decimal color 14533821 looks on a black background.

Color Contrast Check

Large Text (above 18pt) WCAG AA ✓ Pass

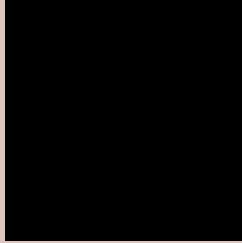
Any Text WCAG AA ✓ Pass

Large Text (above 18pt) WCAG AAA ✓ Pass

Any Text WCAG AAA ✓ Pass

If you want to check with other color combinations, try the [Color Contrast Checker](#).

Decimal 14533821 Background



This preview shows how black text looks on a background with the Decimal color 14533821.



This preview shows how white text looks on a background with the Decimal color 14533821.

Color Blindness Simulation

Color vision deficiency is a very complex topic, and I could not describe the different causes any better than Wikipedia does, so if you want to learn more, you should check out their [article about color blindness](#).

Dichromacy



Original Color
14533821

Protanopia
13617599

Deuteranopia
14795453



Tritanopia
14729680

Trichromacy



Original Color
14533821

Protanomaly
13944766

Deuteranomaly
14730173

Tritanomaly
14664393

Monochromacy



Original Color
14533821

Achromatopsia
13355979

Achromatomaly
13813958

CSS Examples

Text

The CSS property to change the color of the text to Decimal 14533821 is called "color". The color property can be set on classes, ids or directly on the HTML element.

This example shows how text in the color #DDC4BD looks like.

```
.text, #text, p{  
    color:#DDC4BD  
}
```

If you want to add a text shadow in that color use the text-shadow property, you can generate a text shadow directly with our [CSS Text Shadow Generator](#).

Here you see how black text with a 4 pixel #DDC4BD colored shadow looks like.

```
.shadow{ text-shadow: 4px 4px 2px #DDC4BD
}
```

Border

The CSS property to change the border of an element to Decimal 14533821 is called "border". The border property can be set on classes, ids or directly on the HTML element.

This example shows the color as border, it can be applied via the CSS property "border" or "border-color".

```
.border, #border, table{ border:4px solid
#DDC4BD }
```

If only the border color should be changed use the property `border-color`.

```
.border{ border-color:#DDC4BD }
```

If you want to add a box shadow in that color use:

Here you see how a box with a 4 pixel #DDC4BD colored shadow looks like.

```
.boxshadow{ -moz-box-shadow:4px 4px 4px  
4px #DDC4BD; -webkit-box-shadow:4px 4px  
4px 4px #DDC4BD; box-shadow:4px 4px 4px  
4px #DDC4BD }
```

Background

The CSS property to change the background color of an element to Decimal 14533821 is called "background". The background property can be set on classes, ids or directly on the HTML element.

```
.background, #background, body{  
background:#DDC4BD }
```

If only the background color should be changed can be used:

```
.background{ background-color:#DDC4BD }
```

This example shows the color as background, it is applied via the CSS property "background".

To optimize and compress your CSS code, you can use our [online CSS compressor and optimizer](#) based on csstidy. If you want to create a linear or radial gradient as background or border, check our [CSS Gradient Generator](#).

Hey! You found this booklet interesting? Support Converting Colors with the new Membership Option!

The pro membership hides all ads, plus gives you double the colors in the color bucket, and more awesome pro features!

[Learn more, Memberships starting at \\$2.50/m!](#)

**Follow me
on Twitter!**

@ConvertingColor