

Converting Colors

Decimal(14534085)

Have a look what the booklet for
Decimal(14534085) contains.

Decimal(14534085)	3
<i>Conversions</i>	4
<i>Details</i>	6
<i>Harmonies</i>	11
<i>Previews</i>	23
<i>Color Blindness Simulation</i>	26
<i>CSS Examples</i>	29

Color

Decimal(14534085)

Conversions

Conversions Part 1

Format	Color
Hex	DDC5C5
RGB	221, 197, 197
RGB Percent	87%, 77%, 77%
CMY	0.1333, 0.2275, 0.2275
CMYK	0.00, 0.11, 0.11, 0.13
HSL	0°, 26%, 82%
HSV	0°, 11%, 87%
XYZ	59.8631, 59.3359, 61.1212
YIQ	204.1760, 14.3040, 5.0880

Conversions

Conversions Part 2

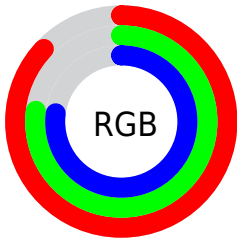
Format	Color
R_{YB}	221, 197, 197
Decimal	14534085
CIE _{Lab}	81.48, 8.44, 3.08
CIE _{LCh}	81, 8.981, 20.045
Yxy	59.3359, 0.3320, 0.3291
Android (android.graphics.Color)	4292724165 (0xFFDDC5C5)
YUV	204.1760, -3.5378, 14.7546
Hunter-Lab	77.0298, 3.9178, 6.8757

Details

The Decimal color **14534085** is a light color, and the websafe version is hex **CCCCCC**. A complement of this color would be **12967389**, and the grayscale version is **13421772**.

A 20% lighter version of the original color is **16776958**, and **10915727** is the 20% darker color. If you saturate the color by 10%, you get **14528431**, and if you desaturate by 10%, it is **14539739**.

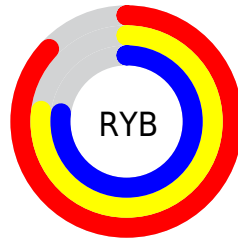
Distribution



Red (87%)

Green (77%)

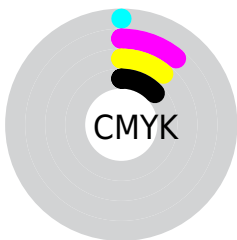
Blue (77%)



Red (87%)

Yellow (77%)

Blue (77%)

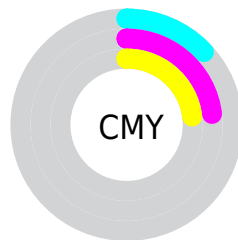


Cyan (0%)

Magenta (11%)

Yellow (11%)

Black (13%)



Cyan (13%)

Magenta (23%)

Yellow (23%)

Brightness & Saturation Gradients

These gradients show how the Decimal color 14534085 changes by changing the brightness by 10 percent. The first figure shows a shift by +10% for each color and the second figure -10%.

Similar to the brightness gradients but the following saturation gradients show a change of the Decimal color 14534085 by changing the saturation by 10% instead.



 14534085

 14534085

 14528431

 14539739

 14522777

 14545393

 14517123

 14548991

 14511469

 14505815

 14499904

 14494250

 14488596

 14483456

Harmonies

Analogous

The Analogous color harmony consists of three colors that are next to each other on the color wheel.



14337486



14534085



14403262

Triad

The Triadic color harmony groups three colors that are evenly spaced from another and form a triangle on the color wheel.



14534085



12766911



12569819

Complementary

The Complementary color scheme is a pair of colors which are on the opposite of each other on the color wheel.



14534085



12967389

Split Complementary

Split-complementary colors differ from the complementary color scheme. The scheme consists of three colors, the original color and two neighbors of the complement color.



12111575



14534085



12242887

Square

The Square scheme is like the rectangle color scheme, but the four colors are evenly spaced on the color wheel.



14534085



13356219



11980752



13224410

Rectangle

The Rectangle color scheme consists of four colors that form a rectangle on the color wheel.



14534085



14141627



11980752



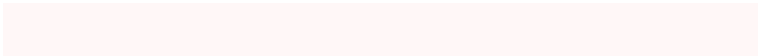
12373466

Sweetspot

The Sweet Spot groups the original color and five complimentary colors.



14534085



16775159



14534109



8419962



0



8421504

Same Dimension

The Same Dimension uses a secret algorithm to generate beautiful new colors.



14534085



16768734



14537157



7234403



11337728



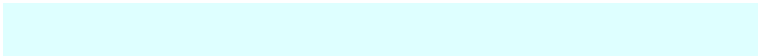
3014656

Inverse Universe

The Inverse Universe completely reimagines the original color for something new.



12967389



14614527



12964317



6516334



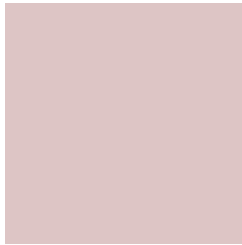
44461



11822

Previews

White Background



This preview shows how the Decimal color 14534085 looks on a white background.

Color Contrast Check

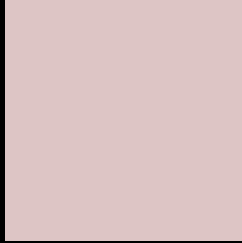
Large Text (above 18pt) WCAG AA × Fail

Any Text WCAG AA × Fail

Large Text (above 18pt) WCAG AAA × Fail

Any Text WCAG AAA × Fail

Black Background



This preview shows how the Decimal color 14534085 looks on a black background.

Color Contrast Check

Large Text (above 18pt) WCAG AA ✓ Pass

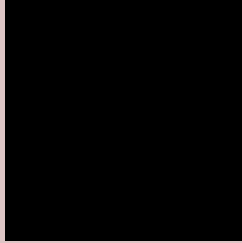
Any Text WCAG AA ✓ Pass

Large Text (above 18pt) WCAG AAA ✓ Pass

Any Text WCAG AAA ✓ Pass

If you want to check with other color combinations, try the [Color Contrast Checker](#).

Decimal 14534085 Background



This preview shows how black text looks on a background with the Decimal color 14534085.



This preview shows how white text looks on a background with the Decimal color 14534085.

Color Blindness Simulation

Color vision deficiency is a very complex topic, and I could not describe the different causes any better than Wikipedia does, so if you want to learn more, you should check out their [article about color blindness](#).


Dichromacy



Original Color
14534085

Protanopia
13617864

Deuteranopia
14730437



Tritanopia
14664658

Trichromacy



Original Color
14534085

Protanomaly
13945031

Deuteranomaly
14664901

Tritanomaly
14599373

Monochromacy



Original Color
14534085

Achromatopsia
13421772

Achromatomaly
13814217

CSS Examples

Text

The CSS property to change the color of the text to Decimal 14534085 is called "color". The color property can be set on classes, ids or directly on the HTML element.

This example shows how text in the color #DDC5C5 looks like.

```
.text, #text, p{  
    color:#DDC5C5  
}
```

If you want to add a text shadow in that color use the text-shadow property, you can generate a text shadow directly with our [CSS Text Shadow Generator](#).

Here you see how black text with a 4 pixel #DDC5C5 colored shadow looks like.

```
.shadow{ text-shadow: 4px 4px 2px #DDC5C5
}
```

Border

The CSS property to change the border of an element to Decimal 14534085 is called "border". The border property can be set on classes, ids or directly on the HTML element.

This example shows the color as border, it can be applied via the CSS property "border" or "border-color".

```
.border, #border, table{ border:4px solid
#DDC5C5 }
```

If only the border color should be changed use the property border-color.

```
.border{ border-color:#DDC5C5 }
```

If you want to add a box shadow in that color use:

Here you see how a box with a 4 pixel #DDC5C5 colored shadow looks like.

```
.boxshadow{ -moz-box-shadow:4px 4px 4px  
4px #DDC5C5; -webkit-box-shadow:4px 4px  
4px 4px #DDC5C5; box-shadow:4px 4px 4px  
4px #DDC5C5 }
```

Background

The CSS property to change the background color of an element to Decimal 14534085 is called "background". The background property can be set on classes, ids or directly on the HTML element.

```
.background, #background, body{  
background:#DDC5C5 }
```

If only the background color should be changed can be used:

```
.background{ background-color:#DDC5C5 }
```

This example shows the color as background, it is applied via the CSS property "background".

To optimize and compress your CSS code, you can use our [online CSS compressor and optimizer](#) based on csstidy. If you want to create a linear or radial gradient as background or border, check our [CSS Gradient Generator](#).

Hey! You found this booklet interesting? Support Converting Colors with the new Membership Option!

The pro membership hides all ads, plus gives you double the colors in the color bucket, and more awesome pro features!

[Learn more, Memberships starting at \\$2.50/m!](#)

**Follow me
on Twitter!**

@ConvertingColor