

Converting Colors

Decimal(14534097)

Have a look what the booklet for
Decimal(14534097) contains.

Decimal(14534097)	3
<i>Conversions</i>	4
<i>Details</i>	6
<i>Harmonies</i>	11
<i>Previews</i>	23
<i>Color Blindness Simulation</i>	26
<i>CSS Examples</i>	29

Color

Decimal(14534097)

Conversions

Conversions Part 1

Format	Color
Hex	DDC5D1
RGB	221, 197, 209
RGB Percent	87%, 77%, 82%
CMY	0.1333, 0.2275, 0.1804
CMYK	0.00, 0.11, 0.05, 0.13
HSL	330°, 26%, 82%
HSV	330°, 11%, 87%
XYZ	61.2937, 59.9081, 68.6545
YIQ	205.5440, 10.4520, 8.8200

Conversions

Conversions Part 2

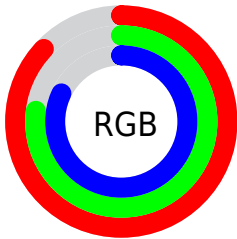
Format	Color
R _Y B	221, 197, 209
Decimal	14534097
CIE Lab	81.79, 10.48, -2.90
CIE LCh	82, 10.872, 344.527
Yxy	59.9081, 0.3228, 0.3155
Android (android.graphics.Color)	4292724177 (0xFFDDC5D1)
YUV	205.5440, 1.7038, 13.5549
Hunter-Lab	77.4003, 5.9044, 1.5897

Details

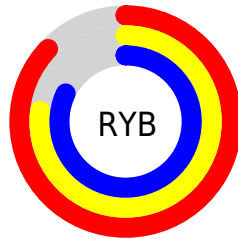
The Decimal color **14534097** is a light color, and the websafe version is hex **CCCCCC**. A complement of this color would be **12967377**, and the grayscale version is **13553358**.

A 20% lighter version of the original color is **16776959**, and **10915739** is the 20% darker color. If you saturate the color by 10%, you get **14528454**, and if you desaturate by 10%, it is **14539740**.

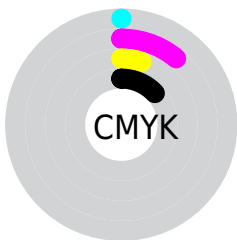
Distribution



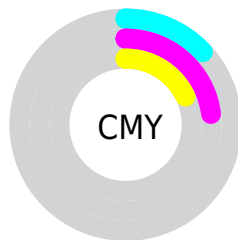
- Red (87%)
- Green (77%)
- Blue (82%)



- Red (87%)
- Yellow (77%)
- Blue (82%)



- Cyan (0%)
- Magenta (11%)
- Yellow (5%)
- Black (13%)



- Cyan (13%)
- Magenta (23%)
- Yellow (18%)

Brightness & Saturation Gradients

These gradients show how the Decimal color 14534097 changes by changing the brightness by 10 percent. The first figure shows a shift by +10% for each color and the second figure -10%.

Similar to the brightness gradients but the following saturation gradients show a change of the Decimal color 14534097 by changing the saturation by 10% instead.



 14534097

 14534097

 14528454

 14539740

 14522811

 14545383

 14517168

 14548978

 14511525

 14548989

 14505882

 14548991

 14499983

 14494340

 14488697

 14483566

Harmonies

Analogous

The Analogous color harmony consists of three colors that are next to each other on the color wheel.



13879258



14534097



14796231

Triad

The Triadic color harmony groups three colors that are evenly spaced from another and form a triangle on the color wheel.



14534097



13618360



11784409

Complementary

The Complementary color scheme is a pair of colors which are on the opposite of each other on the color wheel.



14534097



12967377

Split Complementary

Split-complementary colors differ from the complementary color scheme. The scheme consists of three colors, the original color and two neighbors of the complement color.



11784656



14534097



12832701

Square

The Square scheme is like the rectangle color scheme, but the four colors are evenly spaced on the color wheel.



14534097



14272952



12112326



12308191

Rectangle

The Rectangle color scheme consists of four colors that form a rectangle on the color wheel.



14534097



14796224



12112326



11719126

Sweetspot

The Sweet Spot groups the original color and five complimentary colors.



14534097



16775163



13747677



8419965



0



8421504

Same Dimension

The Same Dimension uses a secret algorithm to generate beautiful new colors.



14534097



16768750



14534085



7234408



11337815



3014679

Inverse Universe

The Inverse Universe completely reimagines the original color for something new.



14534097



16768750



12967389



7234408



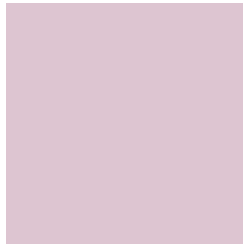
11337815



3014679

Previews

White Background



This preview shows how the Decimal color 14534097 looks on a white background.

Color Contrast Check

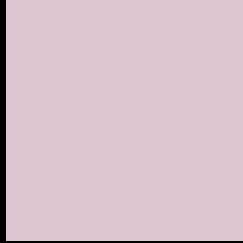
Large Text (above 18pt) WCAG AA × Fail

Any Text WCAG AA × Fail

Large Text (above 18pt) WCAG AAA × Fail

Any Text WCAG AAA × Fail

Black Background



This preview shows how the Decimal color 14534097 looks on a black background.

Color Contrast Check

Large Text (above 18pt) WCAG AA ✓ Pass

Any Text WCAG AA ✓ Pass

Large Text (above 18pt) WCAG AAA ✓ Pass

Any Text WCAG AAA ✓ Pass

If you want to check with other color combinations, try the [Color Contrast Checker](#).

Decimal 14534097 Background



This preview shows how black text looks on a background with the Decimal color 14534097.

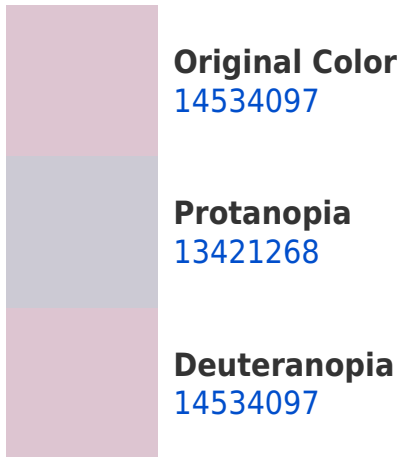



This preview shows how white text looks on a background with the Decimal color 14534097.

Color Blindness Simulation

Color vision deficiency is a very complex topic, and I could not describe the different causes any better than Wikipedia does, so if you want to learn more, you should check out their [article about color blindness](#).

Dichromacy





Tritanopia
14534100

Trichromacy



Original Color
14534097

Protanomaly
13813971

Deuteranomaly
14534097

Tritanomaly
14534099

Monochromacy



Original Color
14534097

Achromatopsia
13553358

Achromatomaly
13880271

CSS Examples

Text

The CSS property to change the color of the text to Decimal 14534097 is called "color". The color property can be set on classes, ids or directly on the HTML element.

This example shows how text in the color #DDC5D1 looks like.

```
.text, #text, p{  
    color:#DDC5D1  
}
```

If you want to add a text shadow in that color use the text-shadow property, you can generate a text shadow directly with our [CSS Text Shadow Generator](#).

Here you see how black text with a 4 pixel #DDC5D1 colored shadow looks like.

```
.shadow{ text-shadow: 4px 4px 2px #DDC5D1
}
```

Border

The CSS property to change the border of an element to Decimal 14534097 is called "border". The border property can be set on classes, ids or directly on the HTML element.

This example shows the color as border, it can be applied via the CSS property "border" or "border-color".

```
.border, #border, table{ border:4px solid
#DDC5D1 }
```

If only the border color should be changed use the property `border-color`.

```
.border{ border-color:#DDC5D1 }
```

If you want to add a box shadow in that color use:

Here you see how a box with a 4 pixel #DDC5D1 colored shadow looks like.

```
.boxshadow{ -moz-box-shadow:4px 4px 4px  
4px #DDC5D1; -webkit-box-shadow:4px 4px  
4px 4px #DDC5D1; box-shadow:4px 4px 4px  
4px #DDC5D1 }
```

Background

The CSS property to change the background color of an element to Decimal 14534097 is called "background". The background property can be set on classes, ids or directly on the HTML element.

```
.background, #background, body{  
background:#DDC5D1 }
```

If only the background color should be changed can be used:

```
.background{ background-color:#DDC5D1 }
```

This example shows the color as background, it is applied via the CSS property "background".

To optimize and compress your CSS code, you can use our [online CSS compressor and optimizer](#) based on csstidy. If you want to create a linear or radial gradient as background or border, check our [CSS Gradient Generator](#).

Hey! You found this booklet interesting? Support Converting Colors with the new Membership Option!

The pro membership hides all ads, plus gives you double the colors in the color bucket, and more awesome pro features!

[Learn more, Memberships starting at \\$2.50/m!](#)

**Follow me
on Twitter!**

@ConvertingColor