

Converting Colors

Decimal(14534349)

Have a look what the booklet for
Decimal(14534349) contains.

Decimal(14534349)	3
<i>Conversions</i>	4
<i>Details</i>	6
<i>Harmonies</i>	11
<i>Previews</i>	23
<i>Color Blindness Simulation</i>	26
<i>CSS Examples</i>	29

Color

Decimal(14534349)

Conversions

Conversions Part 1

Format	Color
Hex	DDC6CD
RGB	221, 198, 205
RGB Percent	87%, 78%, 80%
CMY	0.1333, 0.2235, 0.1961
CMYK	0.00, 0.10, 0.07, 0.13
HSL	342°, 25%, 82%
HSV	342°, 10%, 87%
XYZ	61.0323, 60.1681, 66.1545
YIQ	205.6750, 11.4610, 7.0530

Conversions

Conversions Part 2

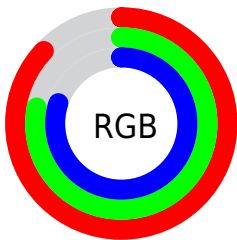
Format	Color
R _Y B	221, 198, 205
Decimal	14534349
CIE Lab	81.93, 9.25, -0.55
CIE LCh	82, 9.270, 356.602
Yxy	60.1681, 0.3258, 0.3211
Android (android.graphics.Color)	4292724429 (0xFFDDC6CD)
YUV	205.6750, -0.3328, 13.4400
Hunter-Lab	77.5681, 4.7036, 3.7318

Details

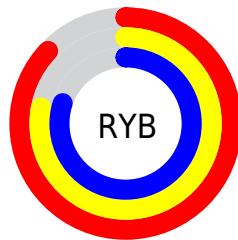
The Decimal color **14534349** is a light color, and the websafe version is hex **CCCCCC**. A complement of this color would be **13032918**, and the grayscale version is **13553358**.

A 20% lighter version of the original color is **16777215**, and **10915991** is the 20% darker color. If you saturate the color by 10%, you get **14528702**, and if you desaturate by 10%, it is **14539996**.

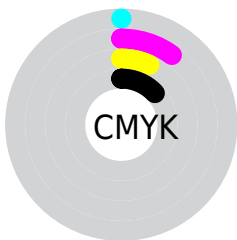
Distribution



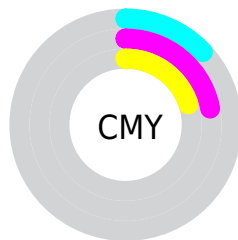
- Red (87%)
- Green (78%)
- Blue (80%)



- Red (87%)
- Yellow (78%)
- Blue (80%)



- Cyan (0%)
- Magenta (10%)
- Yellow (7%)
- Black (13%)



- Cyan (13%)
- Magenta (22%)
- Yellow (20%)

Brightness & Saturation Gradients

These gradients show how the Decimal color 14534349 changes by changing the brightness by 10 percent. The first figure shows a shift by +10% for each color and the second figure -10%.

Similar to the brightness gradients but the following saturation gradients show a change of the Decimal color 14534349 by changing the saturation by 10% instead.

■ 14534349

16777215

■ 14534349

■ 12692402

■ 10915991

■ 9140093

■ 7495268

■ 5850700

■ 4337718

■ 2824992

■ 1572873

■ 0

 14534349

 14534349

 14528702

 14539996

 14523054

 14545644

 14517407

 14548987

 14511760

 14548991

 14506112

 14500209

 14494561

 14488914

 14483523

Harmonies

Analogous

The Analogous color harmony consists of three colors that are next to each other on the color wheel.



14075861



14534349



14665412

Triad

The Triadic color harmony groups three colors that are evenly spaced from another and form a triangle on the color wheel.



14534349



13291196



12242906

Complementary

The Complementary color scheme is a pair of colors which are on the opposite of each other on the color wheel.



14534349



13032918

Split Complementary

Split-complementary colors differ from the complementary color scheme. The scheme consists of three colors, the original color and two neighbors of the complement color.



11981267



14534349



12701890

Square

The Square scheme is like the rectangle color scheme, but the four colors are evenly spaced on the color wheel.



14534349



13945787



12177866



12766685

Rectangle

The Rectangle color scheme consists of four colors that form a rectangle on the color wheel.



14534349



14534591



12177866



12112088

Sweetspot

The Sweet Spot groups the original color and five complimentary colors.



14534349



16775162



14075613



8419964



0



8421504

Same Dimension

The Same Dimension uses a secret algorithm to generate beautiful new colors.



14534349



16769258



14535366



7234406



11337781



3014670

Inverse Universe

The Inverse Universe completely reimagines the original color for something new.



14534349



16769258



13031901



7234406



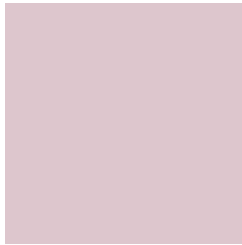
11337781



3014670

Previews

White Background



This preview shows how the Decimal color 14534349 looks on a white background.

Color Contrast Check

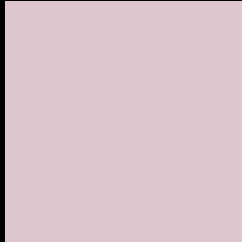
Large Text (above 18pt) WCAG AA × Fail

Any Text WCAG AA × Fail

Large Text (above 18pt) WCAG AAA × Fail

Any Text WCAG AAA × Fail

Black Background



This preview shows how the Decimal color 14534349 looks on a black background.

Color Contrast Check

Large Text (above 18pt) WCAG AA ✓ Pass

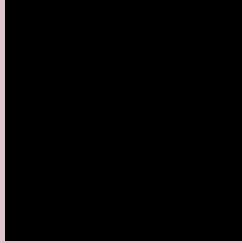
Any Text WCAG AA ✓ Pass

Large Text (above 18pt) WCAG AAA ✓ Pass

Any Text WCAG AAA ✓ Pass

If you want to check with other color combinations, try the [Color Contrast Checker](#).

Decimal 14534349 Background



This preview shows how black text looks on a background with the Decimal color 14534349.



This preview shows how white text looks on a background with the Decimal color 14534349.

Color Blindness Simulation

Color vision deficiency is a very complex topic, and I could not describe the different causes any better than Wikipedia does, so if you want to learn more, you should check out their [article about color blindness](#).


Dichromacy



Original Color
14534349

Protanopia
13552592

Deuteranopia
14665165



Tritanopia
14599636

Trichromacy



Original Color

14534349

Protanomaly

13879759

Deuteranomaly

14599629

Tritanomaly

14599633

Monochromacy



Original Color

14534349

Achromatopsia

13553358

Achromatomaly

13880270

CSS Examples

Text

The CSS property to change the color of the text to Decimal 14534349 is called "color". The color property can be set on classes, ids or directly on the HTML element.

This example shows how text in the color #DDC6CD looks like.

```
.text, #text, p{  
    color:#DDC6CD  
}
```

If you want to add a text shadow in that color use the text-shadow property, you can generate a text shadow directly with our [CSS Text Shadow Generator](#).

Here you see how black text with a 4 pixel #DDC6CD colored shadow looks like.

```
.shadow{ text-shadow: 4px 4px 2px #DDC6CD
}
```

Border

The CSS property to change the border of an element to Decimal 14534349 is called "border". The border property can be set on classes, ids or directly on the HTML element.

This example shows the color as border, it can be applied via the CSS property "border" or "border-color".

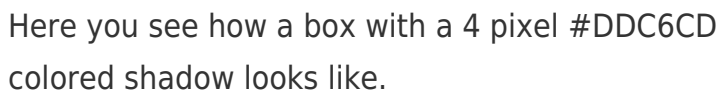
```
.border, #border, table{ border:4px solid
#DDC6CD }
```

If only the border color should be changed use the property `border-color`.

```
.border{ border-color:#DDC6CD }
```

If you want to add a box shadow in that color use:

Here you see how a box with a 4 pixel #DDC6CD colored shadow looks like.



```
.boxshadow{ -moz-box-shadow:4px 4px 4px  
4px #DDC6CD; -webkit-box-shadow:4px 4px  
4px 4px #DDC6CD; box-shadow:4px 4px 4px  
4px #DDC6CD }
```

Background

The CSS property to change the background color of an element to Decimal 14534349 is called "background". The background property can be set on classes, ids or directly on the HTML element.

```
.background, #background, body{  
background:#DDC6CD }
```

If only the background color should be changed can be used:

```
.background{ background-color:#DDC6CD }
```

This example shows the color as background, it is applied via the CSS property "background".

To optimize and compress your CSS code, you can use our [online CSS compressor and optimizer](#) based on csstidy. If you want to create a linear or radial gradient as background or border, check our [CSS Gradient Generator](#).

Hey! You found this booklet interesting? Support Converting Colors with the new Membership Option!

The pro membership hides all ads, plus gives you double the colors in the color bucket, and more awesome pro features!

[Learn more, Memberships starting at \\$2.50/m!](#)

**Follow me
on Twitter!**

@ConvertingColor