

Converting Colors

Decimal(14534598)

Have a look what the booklet for
Decimal(14534598) contains.

Decimal(14534598)	3
<i>Conversions</i>	4
<i>Details</i>	6
<i>Harmonies</i>	11
<i>Previews</i>	23
<i>Color Blindness Simulation</i>	26
<i>CSS Examples</i>	29

Color

Decimal(14534598)

Conversions

Conversions Part 1

Format	Color
Hex	DDC7C6
RGB	221, 199, 198
RGB Percent	87%, 78%, 78%
CMY	0.1333, 0.2196, 0.2235
CMYK	0.00, 0.10, 0.10, 0.13
HSL	3°, 25%, 82%
HSV	3°, 10%, 87%
XYZ	60.4353, 60.2962, 61.8791
YIQ	205.4640, 13.4330, 4.3530

Conversions

Conversions Part 2

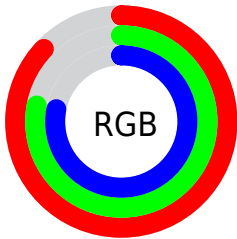
Format	Color
R _Y B	221, 199, 198
Decimal	14534598
CIE Lab	82.00, 7.54, 3.30
CIE LCh	82, 8.234, 23.634
Yxy	60.2962, 0.3310, 0.3302
Android (android.graphics.Color)	4292724678 (0xFFDDC7C6)
YUV	205.4640, -3.6798, 13.6251
Hunter-Lab	77.6506, 3.0374, 7.1078

Details

The Decimal color **14534598** is a light color, and the websafe version is hex **CCCCCC**. A complement of this color would be **13032669**, and the grayscale version is **13487565**.

A 20% lighter version of the original color is **16777215**, and **10916240** is the 20% darker color. If you saturate the color by 10%, you get **14529200**, and if you desaturate by 10%, it is **14539996**.

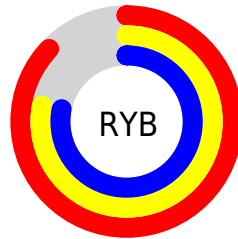
Distribution



Red (87%)

Green (78%)

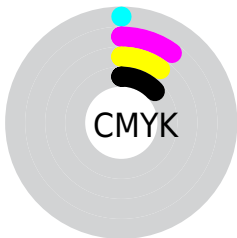
Blue (78%)



Red (87%)

Yellow (78%)

Blue (78%)

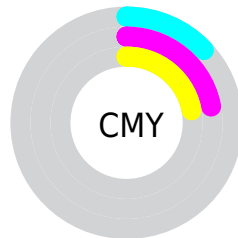


Cyan (0%)

Magenta (10%)

Yellow (10%)

Black (13%)



Cyan (13%)

Magenta (22%)

Yellow (22%)

Brightness & Saturation Gradients

These gradients show how the Decimal color 14534598 changes by changing the brightness by 10 percent. The first figure shows a shift by +10% for each color and the second figure -10%.

Similar to the brightness gradients but the following saturation gradients show a change of the Decimal color 14534598 by changing the saturation by 10% instead.

■ 14534598

16777215

■ 14534598

■ 12692651

■ 10916240

■ 9140087

■ 7495518

■ 5850950

■ 4272432

■ 2825243

■ 1573120

■ 0

 14534598

 14534598

 14529200

 14539996

 14523802

 14545394

 14518404

 14548991

 14512750

 14507352

 14501953

 14496555

 14491157

 14486016

Harmonies

Analogous

The Analogous color harmony consists of three colors that are next to each other on the color wheel.



14403534



14534598



14403776

Triad

The Triadic color harmony groups three colors that are evenly spaced from another and form a triangle on the color wheel.



14534598



12832707



12766683

Complementary

The Complementary color scheme is a pair of colors which are on the opposite of each other on the color wheel.



14534598



13032669

Split Complementary

Split-complementary colors differ from the complementary color scheme. The scheme consists of three colors, the original color and two neighbors of the complement color.



12308440



14534598



12374474

Square

The Square scheme is like the rectangle color scheme, but the four colors are evenly spaced on the color wheel.



14534598



13422014



12177618



13421274

Rectangle

The Rectangle color scheme consists of four colors that form a rectangle on the color wheel.



14534598



14142141



12177618



12635866

Sweetspot

The Sweet Spot groups the original color and five complimentary colors.



14534598



16775415



14534364



8420218



0



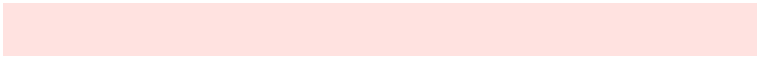
8421504

Same Dimension

The Same Dimension uses a secret algorithm to generate beautiful new colors.



14534598



16769760



14537414



7234403



11339776



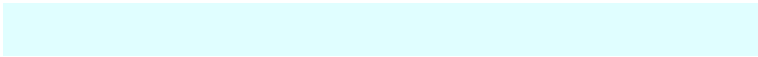
3015168

Inverse Universe

The Inverse Universe completely reimagines the original color for something new.



13032669



14745343



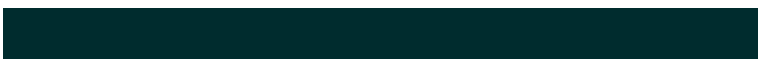
13029853



6516078



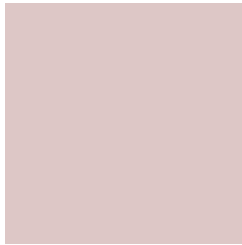
42669



11310

Previews

White Background



This preview shows how the Decimal color 14534598 looks on a white background.

Color Contrast Check

Large Text (above 18pt) WCAG AA × Fail

Any Text WCAG AA × Fail

Large Text (above 18pt) WCAG AAA × Fail

Any Text WCAG AAA × Fail

Black Background



This preview shows how the Decimal color 14534598 looks on a black background.

Color Contrast Check

Large Text (above 18pt) WCAG AA ✓ Pass

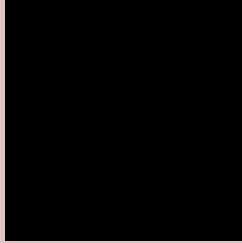
Any Text WCAG AA ✓ Pass

Large Text (above 18pt) WCAG AAA ✓ Pass

Any Text WCAG AAA ✓ Pass

If you want to check with other color combinations, try the [Color Contrast Checker](#).

Decimal 14534598 Background



This preview shows how black text looks on a background with the Decimal color 14534598.




This preview shows how white text looks on a background with the Decimal color 14534598.

Color Blindness Simulation

Color vision deficiency is a very complex topic, and I could not describe the different causes any better than Wikipedia does, so if you want to learn more, you should check out their [article about color blindness](#).

Dichromacy





Tritanopia
14665172

Trichromacy



Original Color
14534598

Protanomaly
14011079

Deuteranomaly
14730950

Tritanomaly
14599887

Monochromacy



Original Color
14534598

Achromatopsia
13487565

Achromatomaly
13880266

CSS Examples

Text

The CSS property to change the color of the text to Decimal 14534598 is called "color". The color property can be set on classes, ids or directly on the HTML element.

This example shows how text in the color #DDC7C6 looks like.

```
.text, #text, p{  
  color:#DDC7C6  
}
```

If you want to add a text shadow in that color use the text-shadow property, you can generate a text shadow directly with our [CSS Text Shadow Generator](#).

Here you see how black text with a 4 pixel #DDC7C6 colored shadow looks like.

```
.shadow{ text-shadow: 4px 4px 2px #DDC7C6
}
```

Border

The CSS property to change the border of an element to Decimal 14534598 is called "border". The border property can be set on classes, ids or directly on the HTML element.

This example shows the color as border, it can be applied via the CSS property "border" or "border-color".

```
.border, #border, table{ border:4px solid
#DDC7C6 }
```

If only the border color should be changed use the property `border-color`.

```
.border{ border-color:#DDC7C6 }
```

If you want to add a box shadow in that color use:

Here you see how a box with a 4 pixel #DDC7C6 colored shadow looks like.

```
.boxshadow{ -moz-box-shadow:4px 4px 4px  
4px #DDC7C6; -webkit-box-shadow:4px 4px  
4px 4px #DDC7C6; box-shadow:4px 4px 4px  
4px #DDC7C6 }
```

Background

The CSS property to change the background color of an element to Decimal 14534598 is called "background". The background property can be set on classes, ids or directly on the HTML element.

```
.background, #background, body{  
background:#DDC7C6 }
```

If only the background color should be changed can be used:

```
.background{ background-color:#DDC7C6 }
```

This example shows the color as background, it is applied via the CSS property "background".

To optimize and compress your CSS code, you can use our [online CSS compressor and optimizer](#) based on csstidy. If you want to create a linear or radial gradient as background or border, check our [CSS Gradient Generator](#).

Hey! You found this booklet interesting? Support Converting Colors with the new Membership Option!

The pro membership hides all ads, plus gives you double the colors in the color bucket, and more awesome pro features!

[Learn more, Memberships starting at \\$2.50/m!](#)

**Follow me
on Twitter!**

@ConvertingColor