

Converting Colors

Decimal(14570637)

Have a look what the booklet for
Decimal(14570637) contains.

Decimal(14570637)	3
<i>Conversions</i>	4
<i>Details</i>	6
<i>Harmonies</i>	11
<i>Previews</i>	23
<i>Color Blindness Simulation</i>	26
<i>CSS Examples</i>	29

Color

Decimal(14570637)

Conversions

Conversions Part 1

Format	Color
Hex	DE548D
RGB	222, 84, 141
RGB Percent	87%, 33%, 55%
CMY	0.1294, 0.6706, 0.4471
CMYK	0.00, 0.62, 0.36, 0.13
HSL	335°, 68%, 60%
HSV	335°, 62%, 87%
XYZ	38.1022, 23.7933, 27.7837
YIQ	131.7600, 63.9510, 46.9830

Conversions

Conversions Part 2

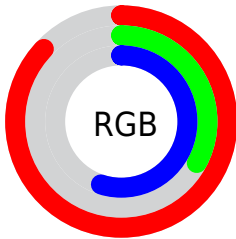
Format	Color
R_{YB}	222, 84, 141
Decimal	14570637
CIE Lab	55.88, 58.84, -2.92
CIE LCh	56, 58.916, 357.156
Yxy	23.7933, 0.4249, 0.2653
Android (android.graphics.Color)	4292760717 (0xFFDE548D)
YUV	131.7600, 4.5553, 79.1405
Hunter-Lab	48.7784, 54.0694, 0.3739

Details

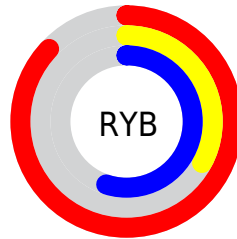
The Decimal color **14570637** is a dark color, and the websafe version is hex **FF6699**. The color can be described as middle muted rose. A complement of this color would be **5562021**, and the grayscale version is **8684676**.

A 20% lighter version of the original color is **16747715**, and **10687067** is the 20% darker color. If you saturate the color by 10%, you get **14564992**, and if you desaturate by 10%, it is **14576282**.

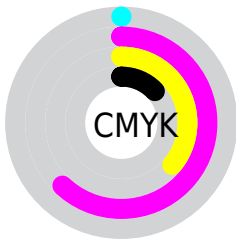
Distribution



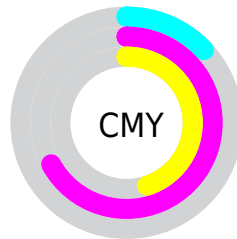
- Red (87%)
- Green (33%)
- Blue (55%)



- Red (87%)
- Yellow (33%)
- Blue (55%)



- Cyan (0%)
- Magenta (62%)
- Yellow (36%)
- Black (13%)



- Cyan (13%)
- Magenta (67%)
- Yellow (45%)

Brightness & Saturation Gradients

These gradients show how the Decimal color 14570637 changes by changing the brightness by 10 percent. The first figure shows a shift by +10% for each color and the second figure -10%.

Similar to the brightness gradients but the following saturation gradients show a change of the Decimal color 14570637 by changing the saturation by 10% instead.

 14570637

 14570637

16777215

 12597108

 16747715

 10687067

 16754910

 8781892

 16762363

 6881326

 16769791

 5046297

 3342338

 0

 14570637

 14570637

 14564992

 14576282

 14559347

 14581927

 14553446

 14587828

 14549084

 14593473

 14599118

 14604763

 14610408

 14614517

 14614527

Harmonies

Analogous

The Analogous color harmony consists of three colors that are next to each other on the color wheel.



12542910



14570637



14703194

Triad

The Triadic color harmony groups three colors that are evenly spaced from another and form a triangle on the color wheel.



14570637



7508255



39387

Complementary

The Complementary color scheme is a pair of colors which are on the opposite of each other on the color wheel.



14570637



5562021

Split Complementary

Split-complementary colors differ from the complementary color scheme. The scheme consists of three colors, the original color and two neighbors of the complement color.



40627



14570637



2267467

Square

The Square scheme is like the rectangle color scheme, but the four colors are evenly spaced on the color wheel.



14570637



10781197



40575



36332

Rectangle

The Rectangle color scheme consists of four colors that form a rectangle on the color wheel.



14570637



13854268



40575



39888

Sweetspot

The Sweet Spot groups the original color and five complimentary colors.



14570637



16764899



10769630



8413806



0



8421504

Same Dimension

The Same Dimension uses a secret algorithm to generate beautiful new colors.



14570637



16728207



14573396



7365994



11534409



3145748

Inverse Universe

The Inverse Universe completely reimagines the original color for something new.



14570637



16728207



5559262



7365994



11534409



3145748

Previews

White Background



This preview shows how the Decimal color 14570637 looks on a white background.

Color Contrast Check

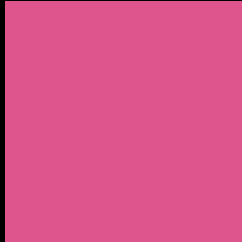
Large Text (above 18pt) WCAG AA ✓ Pass

Any Text WCAG AA × Fail

Large Text (above 18pt) WCAG AAA × Fail

Any Text WCAG AAA × Fail

Black Background



This preview shows how the Decimal color 14570637 looks on a black background.

Color Contrast Check

Large Text (above 18pt) WCAG AA ✓ Pass

Any Text WCAG AA ✓ Pass

Large Text (above 18pt) WCAG AAA ✓ Pass

Any Text WCAG AAA × Fail

If you want to check with other color combinations, try the [Color Contrast Checker](#).

Decimal 14570637 Background



This preview shows how black text looks on a background with the Decimal color 14570637.



This preview shows how white text looks on a background with the Decimal color 14570637.

Color Blindness Simulation

Color vision deficiency is a very complex topic, and I could not describe the different causes any better than Wikipedia does, so if you want to learn more, you should check out their [article about color blindness](#).

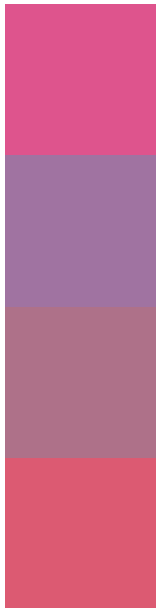
Dichromacy





Tritanopia
14376291

Trichromacy



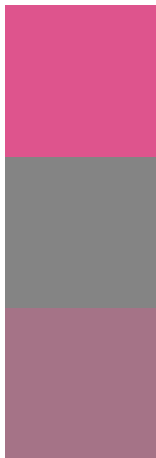
Original Color
14570637

Protanomaly
10515361

Deuteranomaly
11432329

Tritanomaly
14441074

Monochromacy



Original Color
14570637

Achromatopsia
8684676

Achromatomaly
10843015

CSS Examples

Text

The CSS property to change the color of the text to Decimal 14570637 is called "color". The color property can be set on classes, ids or directly on the HTML element.

This example shows how text in the color #DE548D looks like.

```
.text, #text, p{  
    color:#DE548D  
}
```

If you want to add a text shadow in that color use the text-shadow property, you can generate a text shadow directly with our [CSS Text Shadow Generator](#).

Here you see how black text with a 4 pixel #DE548D colored shadow looks like.

```
.shadow{ text-shadow: 4px 4px 2px #DE548D
}
```

Border

The CSS property to change the border of an element to Decimal 14570637 is called "border". The border property can be set on classes, ids or directly on the HTML element.

This example shows the color as border, it can be applied via the CSS property "border" or "border-color".

```
.border, #border, table{ border:4px solid
#DE548D }
```

If only the border color should be changed use the property `border-color`.

```
.border{ border-color:#DE548D }
```

If you want to add a box shadow in that color use:

Here you see how a box with a 4 pixel #DE548D colored shadow looks like.

```
.boxshadow{ -moz-box-shadow:4px 4px 4px  
4px #DE548D; -webkit-box-shadow:4px 4px  
4px 4px #DE548D; box-shadow:4px 4px 4px  
4px #DE548D }
```

Background

The CSS property to change the background color of an element to Decimal 14570637 is called "background". The background property can be set on classes, ids or directly on the HTML element.

```
.background, #background, body{  
background:#DE548D }
```

If only the background color should be changed can be used:

```
.background{ background-color:#DE548D }
```

This example shows the color as background, it is applied via the CSS property "background".

To optimize and compress your CSS code, you can use our [online CSS compressor and optimizer](#) based on csstidy. If you want to create a linear or radial gradient as background or border, check our [CSS Gradient Generator](#).

Hey! You found this booklet interesting? Support Converting Colors with the new Membership Option!

The pro membership hides all ads, plus gives you double the colors in the color bucket, and more awesome pro features!

[Learn more, Memberships starting at \\$2.50/m!](#)

**Follow me
on Twitter!**

@ConvertingColor