

Converting Colors

Decimal(14572931)

Have a look what the booklet for
Decimal(14572931) contains.

Decimal(14572931)	3
<i>Conversions</i>	4
<i>Details</i>	6
<i>Harmonies</i>	11
<i>Previews</i>	23
<i>Color Blindness Simulation</i>	26
<i>CSS Examples</i>	29

Color

Decimal(14572931)

Conversions

Conversions Part 1

Format	Color
Hex	DE5D83
RGB	222, 93, 131
RGB Percent	87%, 36%, 51%
CMY	0.1294, 0.6353, 0.4863
CMYK	0.00, 0.58, 0.41, 0.13
HSL	342°, 66%, 62%
HSV	342°, 58%, 87%
XYZ	38.1353, 24.9970, 24.2877
YIQ	135.9030, 64.6860, 39.1660

Conversions

Conversions Part 2

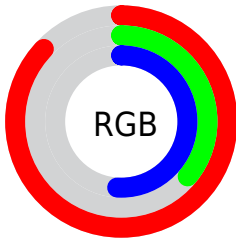
Format	Color
R_{YB}	222, 93, 131
Decimal	14572931
CIE _{Lab}	57.07, 53.81, 4.69
CIE _{LCh}	57, 54.016, 4.985
Yxy	24.9970, 0.4362, 0.2859
Android (android.graphics.Color)	4292763011 (0xFFDE5D83)
YUV	135.9030, -2.4172, 75.5071
Hunter-Lab	49.9970, 48.6564, 6.1958

Details

The Decimal color **14572931** is a dark color, and the websafe version is hex **FF6699**, and the color name is **blush**. The color can be described as middle muted rose. A complement of this color would be **6151864**, and the grayscale version is **8947848**.

A 20% lighter version of the original color is **16749752**, and **10691410** is the 20% darker color. If you saturate the color by 10%, you get **14567283**, and if you desaturate by 10%, it is **14578579**.

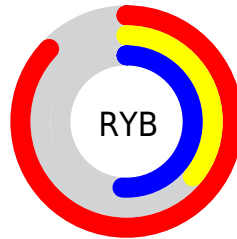
Distribution



Red (87%)

Green (36%)

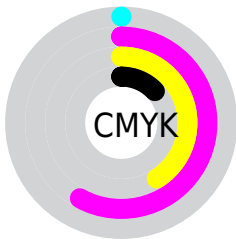
Blue (51%)



Red (87%)

Yellow (36%)

Blue (51%)

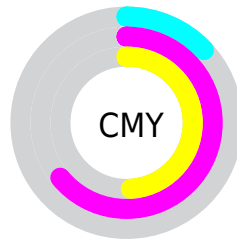


Cyan (0%)

Magenta (58%)

Yellow (41%)

Black (13%)



Cyan (13%)

Magenta (64%)

Yellow (49%)

Brightness & Saturation Gradients

These gradients show how the Decimal color 14572931 changes by changing the brightness by 10 percent. The first figure shows a shift by +10% for each color and the second figure -10%.

Similar to the brightness gradients but the following saturation gradients show a change of the Decimal color 14572931 by changing the saturation by 10% instead.

 14572931

 14572931

16777215

 12599658

 16749752

 10691410

 16756947

 8781883

 16764400

 6881318

 16771839

 5046289

 3342338

 0

 14572931

 14572931

 14567283

 14578579

 14561636

 14584226

 14555732

 14590130

 14550084

 14595778

 14549057

 14601425

 14607073

 14612721

 14614527

Harmonies

Analogous

The Analogous color harmony consists of three colors that are next to each other on the color wheel.



13133490



14572931



14313046

Triad

The Triadic color harmony groups three colors that are evenly spaced from another and form a triangle on the color wheel.



14572931



6985270



39134

Complementary

The Complementary color scheme is a pair of colors which are on the opposite of each other on the color wheel.



14572931



6151864

Split Complementary

Split-complementary colors differ from the complementary color scheme. The scheme consists of three colors, the original color and two neighbors of the complement color.



40894



14572931



1088863

Square

The Square scheme is like the rectangle color scheme, but the four colors are evenly spaced on the color wheel.



14572931



10193186



41104



2985191

Rectangle

The Rectangle color scheme consists of four colors that form a rectangle on the color wheel.



14572931



13333052



41104



39893

Sweetspot

The Sweet Spot groups the original color and five complimentary colors.



14572931



16766176



12017118



8414830



0



8421504

Same Dimension

The Same Dimension uses a secret algorithm to generate beautiful new colors.



14572931



16731521



14579549



7365992



11534388



3145742

Inverse Universe

The Inverse Universe completely reimagines the original color for something new.



14572931



16731521



6145246



7365992



11534388



3145742

Previews

White Background



This preview shows how the Decimal color 14572931 looks on a white background.

Color Contrast Check

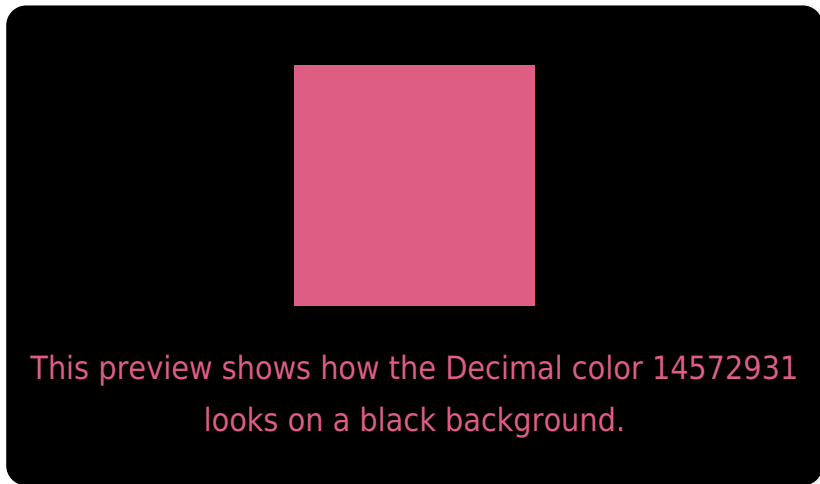
Large Text (above 18pt) WCAG AA ✓ Pass

Any Text WCAG AA × Fail

Large Text (above 18pt) WCAG AAA × Fail

Any Text WCAG AAA × Fail

Black Background



Color Contrast Check

Large Text (above 18pt) WCAG AA ✓ Pass

Any Text WCAG AA ✓ Pass

Large Text (above 18pt) WCAG AAA ✓ Pass

Any Text WCAG AAA × Fail

If you want to check with other color combinations, try the [Color Contrast Checker](#).

Decimal 14572931 Background



This preview shows how black text looks on a background with the Decimal color 14572931.




This preview shows how white text looks on a background with the Decimal color 14572931.

Color Blindness Simulation

Color vision deficiency is a very complex topic, and I could not describe the different causes any better than Wikipedia does, so if you want to learn more, you should check out their [article about color blindness](#).

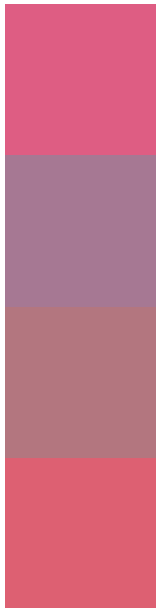
Dichromacy





Tritanopia
14443113

Trichromacy



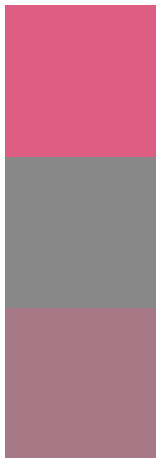
Original Color
14572931

Protanomaly
10909843

Deuteranomaly
11761279

Tritanomaly
14508146

Monochromacy



Original Color
14572931

Achromatopsia
8947848

Achromatomaly
10975366

CSS Examples

Text

The CSS property to change the color of the text to Decimal 14572931 is called "color". The color property can be set on classes, ids or directly on the HTML element.

This example shows how text in the color #DE5D83 looks like.

```
.text, #text, p{  
    color:#DE5D83  
}
```

If you want to add a text shadow in that color use the text-shadow property, you can generate a text shadow directly with our [CSS Text Shadow Generator](#).

Here you see how black text with a 4 pixel #DE5D83 colored shadow looks like.

```
.shadow{ text-shadow: 4px 4px 2px #DE5D83
}
```

Border

The CSS property to change the border of an element to Decimal 14572931 is called "border". The border property can be set on classes, ids or directly on the HTML element.

This example shows the color as border, it can be applied via the CSS property "border" or "border-color".

```
.border, #border, table{ border:4px solid
#DE5D83 }
```

If only the border color should be changed use the property `border-color`.

```
.border{ border-color:#DE5D83 }
```

If you want to add a box shadow in that color use:

Here you see how a box with a 4 pixel #DE5D83 colored shadow looks like.

```
.boxshadow{ -moz-box-shadow:4px 4px 4px  
4px #DE5D83; -webkit-box-shadow:4px 4px  
4px 4px #DE5D83; box-shadow:4px 4px 4px  
4px #DE5D83 }
```

Background

The CSS property to change the background color of an element to Decimal 14572931 is called "background". The background property can be set on classes, ids or directly on the HTML element.

```
.background, #background, body{  
background:#DE5D83 }
```

If only the background color should be changed can be used:

```
.background{ background-color:#DE5D83 }
```

This example shows the color as background, it is applied via the CSS property "background".

To optimize and compress your CSS code, you can use our [online CSS compressor and optimizer](#) based on csstidy. If you want to create a linear or radial gradient as background or border, check our [CSS Gradient Generator](#).

Hey! You found this booklet interesting? Support Converting Colors with the new Membership Option!

The pro membership hides all ads, plus gives you double the colors in the color bucket, and more awesome pro features!

[Learn more, Memberships starting at \\$2.50/m!](#)

**Follow me
on Twitter!**

@ConvertingColor