

Converting Colors

Decimal(14573949)

Have a look what the booklet for
Decimal(14573949) contains.

Decimal(14573949)	3
<i>Conversions</i>	4
<i>Details</i>	6
<i>Harmonies</i>	11
<i>Previews</i>	23
<i>Color Blindness Simulation</i>	26
<i>CSS Examples</i>	29

Color

Decimal(14573949)

Conversions

Conversions Part 1

Format	Color
Hex	DE617D
RGB	222, 97, 125
RGB Percent	87%, 38%, 49%
CMY	0.1294, 0.6196, 0.5098
CMYK	0.00, 0.56, 0.44, 0.13
HSL	347°, 65%, 63%
HSV	347°, 56%, 87%
XYZ	38.1006, 25.5597, 22.3274
YIQ	137.5670, 65.5120, 35.2080

Conversions

Conversions Part 2

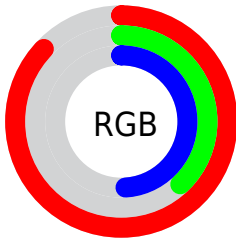
Format	Color
R_{YB}	222, 97, 125
Decimal	14573949
CIE _{Lab}	57.62, 51.35, 8.99
CIE _{LCh}	58, 52.134, 9.926
Yxy	25.5597, 0.4431, 0.2972
Android (android.graphics.Color)	4292764029 (0xFFDE617D)
YUV	137.5670, -6.1955, 74.0477
Hunter-Lab	50.5566, 46.0477, 9.2052

Details

The Decimal color **14573949** is a dark color, and the websafe version is hex **FF6699**. A complement of this color would be **6414018**, and the grayscale version is **9079434**.

A 20% lighter version of the original color is **16750769**, and **10692940** is the 20% darker color. If you saturate the color by 10%, you get **14568300**, and if you desaturate by 10%, it is **14579598**.

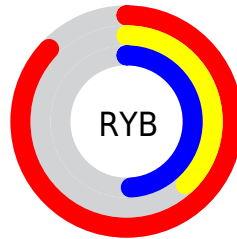
Distribution



Red (87%)

Green (38%)

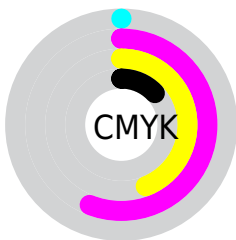
Blue (49%)



Red (87%)

Yellow (38%)

Blue (49%)

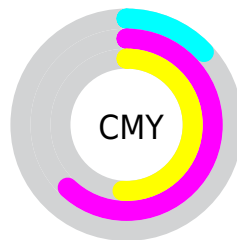


Cyan (0%)

Magenta (56%)

Yellow (44%)

Black (13%)



Cyan (13%)

Magenta (62%)

Yellow (51%)

Brightness & Saturation Gradients

These gradients show how the Decimal color 14573949 changes by changing the brightness by 10 percent. The first figure shows a shift by +10% for each color and the second figure -10%.

Similar to the brightness gradients but the following saturation gradients show a change of the Decimal color 14573949 by changing the saturation by 10% instead.

 14573949

 14573949

16777215

 12600932

 16750769

 10692940

 16757965

 8782134

 16765161

 6881313

 16772607

 5046281

 3342338

 0

 14573949

 14573949

 14568300

 14579598

 14562651

 14585247

 14556745

 14591153

 14551096

 14596802

 14549042

 14602451

 14608100

 14613750

 14614527

Harmonies

Analogous

The Analogous color harmony consists of three colors that are next to each other on the color wheel.



13461419



14573949



14052178

Triad

The Triadic color harmony groups three colors that are evenly spaced from another and form a triangle on the color wheel.



14573949



6527041



39136

Complementary

The Complementary color scheme is a pair of colors which are on the opposite of each other on the color wheel.



14573949



6414018

Split Complementary

Split-complementary colors differ from the complementary color scheme. The scheme consists of three colors, the original color and two neighbors of the complement color.



40900



14573949



40809

Square

The Square scheme is like the rectangle color scheme, but the four colors are evenly spaced on the color wheel.



14573949



9801001



41369



5212900

Rectangle

The Rectangle color scheme consists of four colors that form a rectangle on the color wheel.



14573949



13072187



41369



39897

Sweetspot

The Sweet Spot groups the original color and five complimentary colors.



14573949



16766173



12673502



8414828



0



8421504

Same Dimension

The Same Dimension uses a secret algorithm to generate beautiful new colors.



14573949



16732792



14582369



7365991



11534375



3145739

Inverse Universe

The Inverse Universe completely reimagines the original color for something new.



14573949



16732792



6405598



7365991



11534375



3145739

Previews

White Background



This preview shows how the Decimal color 14573949 looks on a white background.

Color Contrast Check

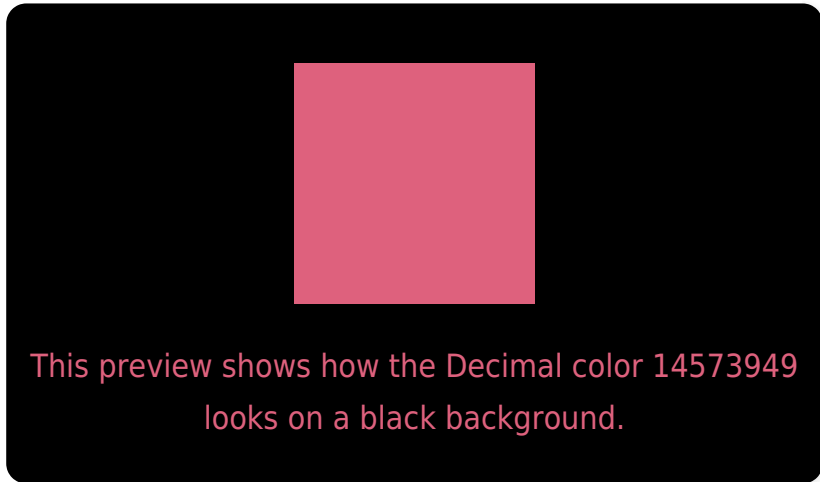
Large Text (above 18pt) WCAG AA ✓ Pass

Any Text WCAG AA × Fail

Large Text (above 18pt) WCAG AAA × Fail

Any Text WCAG AAA × Fail

Black Background



Color Contrast Check

Large Text (above 18pt) WCAG AA ✓ Pass

Any Text WCAG AA ✓ Pass

Large Text (above 18pt) WCAG AAA ✓ Pass

Any Text WCAG AAA × Fail

If you want to check with other color combinations, try the [Color Contrast Checker](#).

Decimal 14573949 Background



This preview shows how black text looks on a background with the Decimal color 14573949.

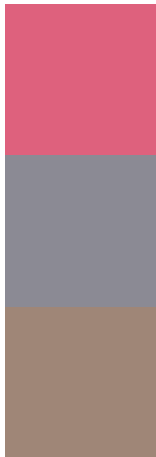


This preview shows how white text looks on a background with the Decimal color 14573949.

Color Blindness Simulation

Color vision deficiency is a very complex topic, and I could not describe the different causes any better than Wikipedia does, so if you want to learn more, you should check out their [article about color blindness](#).


Dichromacy



Original Color
14573949

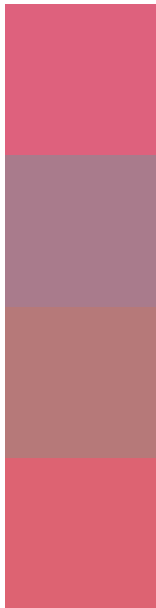
Protanopia
9144980

Deuteranopia
10454647



Tritanopia
14509163

Trichromacy



Original Color
14573949

Protanomaly
11107212

Deuteranomaly
11958649

Tritanomaly
14508914

Monochromacy



Original Color
14573949

Achromatopsia
9079434

Achromatomaly
11107205

CSS Examples

Text

The CSS property to change the color of the text to Decimal 14573949 is called "color". The color property can be set on classes, ids or directly on the HTML element.

This example shows how text in the color #DE617D looks like.

```
.text, #text, p{  
    color:#DE617D  
}
```

If you want to add a text shadow in that color use the text-shadow property, you can generate a text shadow directly with our [CSS Text Shadow Generator](#).

Here you see how black text with a 4 pixel #DE617D colored shadow looks like.

```
.shadow{ text-shadow: 4px 4px 2px #DE617D
}
```

Border

The CSS property to change the border of an element to Decimal 14573949 is called "border". The border property can be set on classes, ids or directly on the HTML element.

This example shows the color as border, it can be applied via the CSS property "border" or "border-color".

```
.border, #border, table{ border:4px solid
#DE617D }
```

If only the border color should be changed use the property `border-color`.

```
.border{ border-color:#DE617D }
```

If you want to add a box shadow in that color use:

Here you see how a box with a 4 pixel #DE617D colored shadow looks like.

```
.boxshadow{ -moz-box-shadow:4px 4px 4px  
4px #DE617D; -webkit-box-shadow:4px 4px  
4px 4px #DE617D; box-shadow:4px 4px 4px  
4px #DE617D }
```

Background

The CSS property to change the background color of an element to Decimal 14573949 is called "background". The background property can be set on classes, ids or directly on the HTML element.

```
.background, #background, body{  
background:#DE617D }
```

If only the background color should be changed can be used:

```
.background{ background-color:#DE617D }
```

This example shows the color as background, it is applied via the CSS property "background".

To optimize and compress your CSS code, you can use our [online CSS compressor and optimizer](#) based on csstidy. If you want to create a linear or radial gradient as background or border, check our [CSS Gradient Generator](#).

Hey! You found this booklet interesting? Support Converting Colors with the new Membership Option!

The pro membership hides all ads, plus gives you double the colors in the color bucket, and more awesome pro features!

[Learn more, Memberships starting at \\$2.50/m!](#)

**Follow me
on Twitter!**

@ConvertingColor