

Converting Colors

Decimal(14574230)

Have a look what the booklet for
Decimal(14574230) contains.

Decimal(14574230)	3
<i>Conversions</i>	4
<i>Details</i>	6
<i>Harmonies</i>	11
<i>Previews</i>	23
<i>Color Blindness Simulation</i>	26
<i>CSS Examples</i>	29

Color

Decimal(14574230)

Conversions

Conversions Part 1

Format	Color
Hex	DE6296
RGB	222, 98, 150
RGB Percent	87%, 38%, 59%
CMY	0.1294, 0.6157, 0.4118
CMYK	0.00, 0.56, 0.32, 0.13
HSL	335°, 65%, 63%
HSV	335°, 56%, 87%
XYZ	39.9969, 26.4670, 31.8547
YIQ	141.0040, 57.2120, 42.4600

Conversions

Conversions Part 2

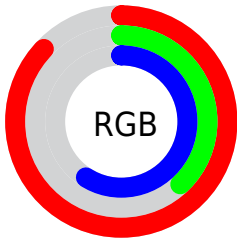
Format	Color
R _Y B	222, 98, 150
Decimal	14574230
CIE Lab	58.48, 53.66, -4.36
CIE LCh	58, 53.837, 355.354
Yxy	26.4670, 0.4068, 0.2692
Android (android.graphics.Color)	4292764310 (0xFFDE6296)
YUV	141.0040, 4.4350, 71.0335
Hunter-Lab	51.4461, 48.7448, -0.6994

Details

The Decimal color **14574230** is a light color, and the websafe version is hex **CC6699**. A complement of this color would be **6479530**, and the grayscale version is **9276813**.

A 20% lighter version of the original color is **16751052**, and **10693219** is the 20% darker color. If you saturate the color by 10%, you get **14568585**, and if you desaturate by 10%, it is **14579875**.

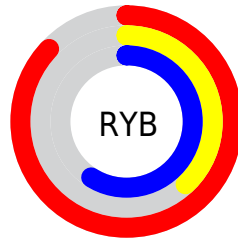
Distribution



Red (87%)

Green (38%)

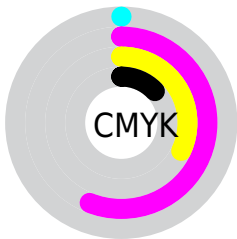
Blue (59%)



Red (87%)

Yellow (38%)

Blue (59%)

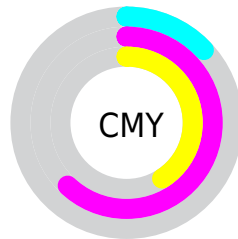


Cyan (0%)

Magenta (56%)

Yellow (32%)

Black (13%)



Cyan (13%)

Magenta (62%)

Yellow (41%)

Brightness & Saturation Gradients

These gradients show how the Decimal color 14574230 changes by changing the brightness by 10 percent. The first figure shows a shift by +10% for each color and the second figure -10%.

Similar to the brightness gradients but the following saturation gradients show a change of the Decimal color 14574230 by changing the saturation by 10% instead.

 14574230

 14574230

16777215

 12601212

 16751052

 10693219

 16758248

 8847436

 16765695

 7012405

 16773119

 5177376

 3604486

 655360

 0

 14574230

 14574230

14568585

14579875

14562940

14585520

14557039

14591421

14551394

14597066

14549085

14602710

14608355

14614000

14614525

14614527

Harmonies

Analogous

The Analogous color harmony consists of three colors that are next to each other on the color wheel.



12545987



14574230



14837095

Triad

The Triadic color harmony groups three colors that are evenly spaced from another and form a triangle on the color wheel.



14574230



8361521



40921

Complementary

The Complementary color scheme is a pair of colors which are on the opposite of each other on the color wheel.



14574230



6479530

Split Complementary

Split-complementary colors differ from the complementary color scheme. The scheme consists of three colors, the original color and two neighbors of the complement color.



41908



14574230



4235092

Square

The Square scheme is like the rectangle color scheme, but the four colors are evenly spaced on the color wheel.



14574230



11307047



41859



38123

Rectangle

The Rectangle color scheme consists of four colors that form a rectangle on the color wheel.



14574230



14118731



41859



41423

Sweetspot

The Sweet Spot groups the original color and five complimentary colors.



14574230



16766182



11035358



8414833



0



8421504

Same Dimension

The Same Dimension uses a secret algorithm to generate beautiful new colors.



14574230



16733340



14576226



7365994



11534410



3145748

Inverse Universe

The Inverse Universe completely reimagines the original color for something new.



14574230



16733340



6477534



7365994



11534410



3145748

Previews

White Background



This preview shows how the Decimal color 14574230 looks on a white background.

Color Contrast Check

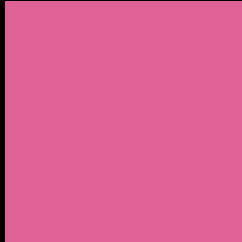
Large Text (above 18pt) WCAG AA ✓ Pass

Any Text WCAG AA ✗ Fail

Large Text (above 18pt) WCAG AAA ✗ Fail

Any Text WCAG AAA ✗ Fail

Black Background



This preview shows how the Decimal color 14574230 looks on a black background.

Color Contrast Check

Large Text (above 18pt) WCAG AA ✓ Pass

Any Text WCAG AA ✓ Pass

Large Text (above 18pt) WCAG AAA ✓ Pass

Any Text WCAG AAA × Fail

If you want to check with other color combinations, try the [Color Contrast Checker](#).

Decimal 14574230 Background



This preview shows how black text looks on a background with the Decimal color 14574230.

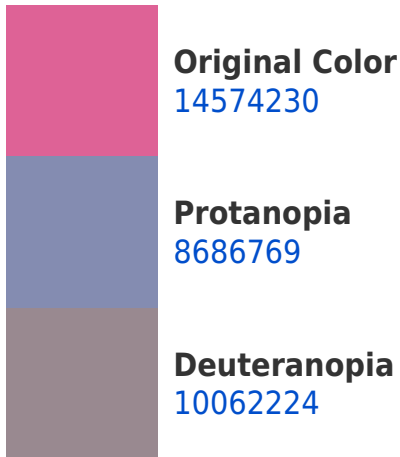


This preview shows how white text looks on a background with the Decimal color 14574230.

Color Blindness Simulation

Color vision deficiency is a very complex topic, and I could not describe the different causes any better than Wikipedia does, so if you want to learn more, you should check out their [article about color blindness](#).

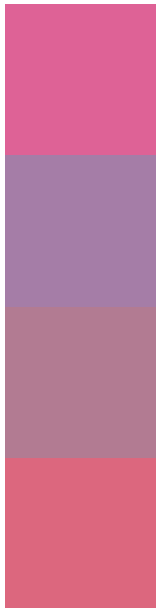
Dichromacy





Tritanopia
14379633

Trichromacy



Original Color
14574230

Protanomaly
10845607

Deuteranomaly
11697042

Tritanomaly
14444414

Monochromacy



Original Color
14574230

Achromatopsia
9276813

Achromatomaly
11173264

CSS Examples

Text

The CSS property to change the color of the text to Decimal 14574230 is called "color". The color property can be set on classes, ids or directly on the HTML element.

This example shows how text in the color #DE6296 looks like.

```
.text, #text, p{  
    color:#DE6296  
}
```

If you want to add a text shadow in that color use the text-shadow property, you can generate a text shadow directly with our [CSS Text Shadow Generator](#).

Here you see how black text with a 4 pixel #DE6296 colored shadow looks like.

```
.shadow{ text-shadow: 4px 4px 2px #DE6296
}
```

Border

The CSS property to change the border of an element to Decimal 14574230 is called "border". The border property can be set on classes, ids or directly on the HTML element.

This example shows the color as border, it can be applied via the CSS property "border" or "border-color".

```
.border, #border, table{ border:4px solid
#DE6296 }
```

If only the border color should be changed use the property `border-color`.

```
.border{ border-color:#DE6296 }
```

If you want to add a box shadow in that color use:

Here you see how a box with a 4 pixel #DE6296 colored shadow looks like.

```
.boxshadow{ -moz-box-shadow:4px 4px 4px  
4px #DE6296; -webkit-box-shadow:4px 4px  
4px 4px #DE6296; box-shadow:4px 4px 4px  
4px #DE6296 }
```

Background

The CSS property to change the background color of an element to Decimal 14574230 is called "background". The background property can be set on classes, ids or directly on the HTML element.

```
.background, #background, body{  
background:#DE6296 }
```

If only the background color should be changed can be used:

```
.background{ background-color:#DE6296 }
```

This example shows the color as background, it is applied via the CSS property "background".

To optimize and compress your CSS code, you can use our [online CSS compressor and optimizer](#) based on csstidy. If you want to create a linear or radial gradient as background or border, check our [CSS Gradient Generator](#).

Hey! You found this booklet interesting? Support Converting Colors with the new Membership Option!

The pro membership hides all ads, plus gives you double the colors in the color bucket, and more awesome pro features!

[Learn more, Memberships starting at \\$2.50/m!](#)

**Follow me
on Twitter!**

@ConvertingColor