

# Converting Colors

Decimal(14574478)

Have a look what the booklet for  
Decimal(14574478) contains.

<b>Decimal(14574478)</b> .....	3
<i><b>Conversions</b></i> .....	4
<i><b>Details</b></i> .....	6
<i><b>Harmonies</b></i> .....	11
<i><b>Previews</b></i> .....	23
<i><b>Color Blindness Simulation</b></i> .....	26
<i><b>CSS Examples</b></i> .....	29

# **Color**

**Decimal(14574478)**

# Conversions

## Conversions Part 1

Format	Color
Hex	DE638E
RGB	222, 99, 142
RGB Percent	87%, 39%, 56%
CMY	0.1294, 0.6118, 0.4431
CMYK	0.00, 0.55, 0.36, 0.13
HSL	339°, 65%, 63%
HSV	339°, 55%, 87%
XYZ	39.4685, 26.4063, 28.6079
YIQ	140.6790, 59.5050, 39.4490

# Conversions

## Conversions Part 2

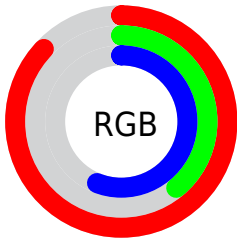
Format	Color
R <sub>Y</sub> B	222, 99, 142
Decimal	14574478
CIE Lab	58.42, 52.25, 0.21
CIE LCh	58, 52.249, 0.235
Yxy	26.4063, 0.4177, 0.2795
Android (android.graphics.Color)	4292764558 (0xFFDE638E)
YUV	140.6790, 0.6513, 71.3185
Hunter-Lab	51.3870, 47.1721, 2.9633

# Details

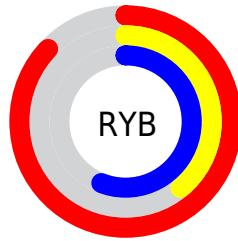
The Decimal color **14574478** is a light color, and the websafe version is hex **CC6699**. A complement of this color would be **6545075**, and the grayscale version is **9276813**.

A 20% lighter version of the original color is **16751300**, and **10693468** is the 20% darker color. If you saturate the color by 10%, you get **14568832**, and if you desaturate by 10%, it is **14580124**.

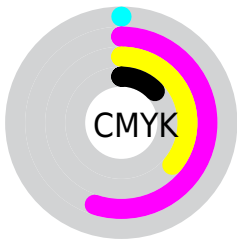
# Distribution



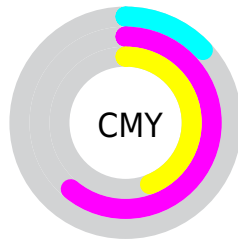
- Red (87%)
- Green (39%)
- Blue (56%)



- Red (87%)
- Yellow (39%)
- Blue (56%)



- Cyan (0%)
- Magenta (55%)
- Yellow (36%)
- Black (13%)



- Cyan (13%)
- Magenta (61%)
- Yellow (44%)

# Brightness & Saturation Gradients

These gradients show how the Decimal color 14574478 changes by changing the brightness by 10 percent. The first figure shows a shift by +10% for each color and the second figure -10%.

Similar to the brightness gradients but the following saturation gradients show a change of the Decimal color 14574478 by changing the saturation by 10% instead.



 14574478

 14574478

16777215

 12601460

 16751300

 10693468

 16758495

 8782917

 16765948

 6946862

 16773375

 5111834

 3538946

 393216

 0

 14574478

 14574478

14568832

14580124

14563185

14585771

14557283

14591673

14551636

14597320

14549070

14602966

14608613

14614259

14614527

# Harmonies

## Analogous

The Analogous color harmony consists of three colors that are next to each other on the color wheel.



12873403



14574478



14575969

# Triad

The Triadic color harmony groups three colors that are evenly spaced from another and form a triangle on the color wheel.



14574478



7837496



40411

# Complementary

The Complementary color scheme is a pair of colors which are on the opposite of each other on the color wheel.



14574478



6545075

# Split Complementary

Split-complementary colors differ from the complementary color scheme. The scheme consists of three colors, the original color and two neighbors of the complement color.



41657



14574478



3514205

# Square

The Square scheme is like the rectangle color scheme, but the four colors are evenly spaced on the color wheel.



14574478



10848810



41867



1675752

# Rectangle

The Rectangle color scheme consists of four colors that form a rectangle on the color wheel.



14574478



13792071



41867



40914



# Sweetspot

The Sweet Spot groups the original color and five complimentary colors.



14574478



16766179



11756510



8414831



0



8421504



# Same Dimension

The Same Dimension uses a secret algorithm to generate beautiful new colors.



14574478



16734098



14579043



7365993



11534398



3145745



# Inverse Universe

The Inverse Universe completely reimagines the original color for something new.



14574478



16734098



6540510



7365993



11534398



3145745



# Previews

## White Background



This preview shows how the Decimal color 14574478 looks on a white background.

## Color Contrast Check

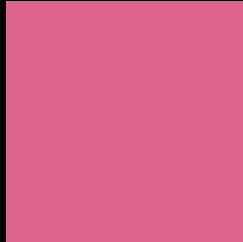
Large Text (above 18pt) WCAG AA ✓ Pass

Any Text WCAG AA × Fail

Large Text (above 18pt) WCAG AAA × Fail

Any Text WCAG AAA × Fail

# Black Background



This preview shows how the Decimal color 14574478 looks on a black background.

## Color Contrast Check

Large Text (above 18pt) WCAG AA ✓ Pass

Any Text WCAG AA ✓ Pass

Large Text (above 18pt) WCAG AAA ✓ Pass

Any Text WCAG AAA × Fail

If you want to check with other color combinations, try the [Color Contrast Checker](#).



## Decimal 14574478 Background



This preview shows how black text looks on a background with the Decimal color 14574478.




This preview shows how white text looks on a background with the Decimal color 14574478.

# Color Blindness Simulation

Color vision deficiency is a very complex topic, and I could not describe the different causes any better than Wikipedia does, so if you want to learn more, you should check out their [article about color blindness](#).

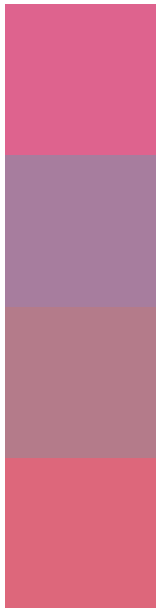
## Dichromacy





**Tritanopia**  
14444912

# Trichromacy



**Original Color**  
14574478

**Protanomaly**  
10976670

**Deuteranomaly**  
11828106

**Tritanomaly**  
14509947

# Monochromacy



**Original Color**  
14574478

**Achromatopsia**  
9276813

**Achromatomaly**  
11173517

# CSS Examples

## Text

The CSS property to change the color of the text to Decimal 14574478 is called "color". The color property can be set on classes, ids or directly on the HTML element.

This example shows how text in the color #DE638E looks like.

```
.text, #text, p{  
    color:#DE638E  
}
```

If you want to add a text shadow in that color use the text-shadow property, you can generate a text shadow directly with our [CSS Text Shadow Generator](#).

Here you see how black text with a 4 pixel #DE638E colored shadow looks like.

```
.shadow{ text-shadow: 4px 4px 2px #DE638E
}
```

## Border

The CSS property to change the border of an element to Decimal 14574478 is called "border". The border property can be set on classes, ids or directly on the HTML element.

This example shows the color as border, it can be applied via the CSS property "border" or "border-color".

```
.border, #border, table{ border:4px solid
#DE638E }
```

If only the border color should be changed use the property `border-color`.

```
.border{ border-color:#DE638E }
```

If you want to add a box shadow in that color use:

Here you see how a box with a 4 pixel #DE638E colored shadow looks like.

```
.boxshadow{ -moz-box-shadow:4px 4px 4px  
4px #DE638E; -webkit-box-shadow:4px 4px  
4px 4px #DE638E; box-shadow:4px 4px 4px  
4px #DE638E }
```

# Background

The CSS property to change the background color of an element to Decimal 14574478 is called "background". The background property can be set on classes, ids or directly on the HTML element.

```
.background, #background, body{  
background:#DE638E }
```

If only the background color should be changed can be used:

```
.background{ background-color:#DE638E }
```

This example shows the color as background, it is applied via the CSS property "background".

To optimize and compress your CSS code, you can use our [online CSS compressor and optimizer](#) based on csstidy. If you want to create a linear or radial gradient as background or border, check our [CSS Gradient Generator](#).



Hey! You found this booklet interesting? Support Converting Colors with the new Membership Option!

The pro membership hides all ads, plus gives you double the colors in the color bucket, and more awesome pro features!

**[Learn more, Memberships starting at \\$2.50/m!](#)**

**Follow me  
on Twitter!**

@ConvertingColor