

Converting Colors

Decimal(14591120)

Have a look what the booklet for
Decimal(14591120) contains.

Decimal(14591120)	3
<i>Conversions</i>	4
<i>Details</i>	6
<i>Harmonies</i>	11
<i>Previews</i>	23
<i>Color Blindness Simulation</i>	26
<i>CSS Examples</i>	29

Color

Decimal(14591120)

Conversions

Conversions Part 1

Format	Color
Hex	DEA490
RGB	222, 164, 144
RGB Percent	87%, 64%, 56%
CMY	0.1294, 0.3569, 0.4353
CMYK	0.00, 0.26, 0.35, 0.13
HSL	15°, 54%, 72%
HSV	15°, 35%, 87%
XYZ	48.4337, 44.0941, 32.3438
YIQ	179.0620, 40.9880, 6.0760

Conversions

Conversions Part 2

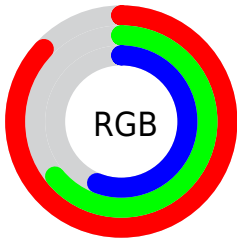
Format	Color
R _Y B	222, 171, 144
Decimal	14591120
CIE Lab	72.29, 18.80, 18.78
CIE LCh	72, 26.574, 44.967
Yxy	44.0941, 0.3879, 0.3531
Android (android.graphics.Color)	4292781200 (0xFFDEA490)
YUV	179.0620, -17.2856, 37.6566
Hunter-Lab	66.4034, 13.9894, 17.6034

Details

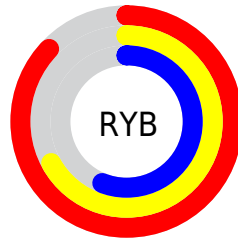
The Decimal color **14591120** is a light color, and the websafe version is hex **CC9999**. A complement of this color would be **9489118**, and the grayscale version is **11776947**.

A 20% lighter version of the original color is **16767942**, and **10842206** is the 20% darker color. If you saturate the color by 10%, you get **14586746**, and if you desaturate by 10%, it is **14595494**.

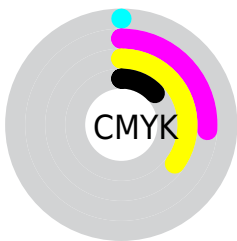
Distribution



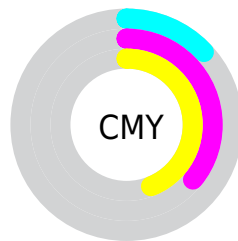
- Red (87%)
- Green (64%)
- Blue (56%)



- Red (87%)
- Yellow (67%)
- Blue (56%)



- Cyan (0%)
- Magenta (26%)
- Yellow (35%)
- Black (13%)



- Cyan (13%)
- Magenta (36%)
- Yellow (44%)

Brightness & Saturation Gradients

These gradients show how the Decimal color 14591120 changes by changing the brightness by 10 percent. The first figure shows a shift by +10% for each color and the second figure -10%.

Similar to the brightness gradients but the following saturation gradients show a change of the Decimal color 14591120 by changing the saturation by 10% instead.

 14591120

 14591120

16777215

 12683894

 16767942

 10842206

 16775394

 9066310

 7290927

 5581082

 3937024

 2424832

 0

 14591120

 14591120

 14586746

 14595494

 14582628

 14599612

 14578253

 14603987

 14574135

 14608105

 14569761

 14612479

 14565643

 14614527

 14563584

Harmonies

Analogous

The Analogous color harmony consists of three colors that are next to each other on the color wheel.



14917798



14591120



13544579

Triad

The Triadic color harmony groups three colors that are evenly spaced from another and form a triangle on the color wheel.



14591120



8437412



10792928

Complementary

The Complementary color scheme is a pair of colors which are on the opposite of each other on the color wheel.



14591120



9489118

Split Complementary

Split-complementary colors differ from the complementary color scheme. The scheme consists of three colors, the original color and two neighbors of the complement color.



8632288



14591120



7126973

Square

The Square scheme is like the rectangle color scheme, but the four colors are evenly spaced on the color wheel.



14591120



10205838



7126483



12888020

Rectangle

The Rectangle color scheme consists of four colors that form a rectangle on the color wheel.



14591120



12562817



7126483



10072801

Sweetspot

The Sweet Spot groups the original color and five complimentary colors.



14591120



16771811



14586059



8418159



0



8421504

Same Dimension

The Same Dimension uses a secret algorithm to generate beautiful new colors.



14591120



16756628



14601104



7366757



11545856



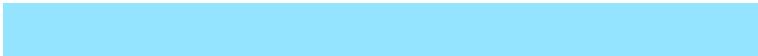
3148800

Inverse Universe

The Inverse Universe completely reimagines the original color for something new.



9489118



9757951



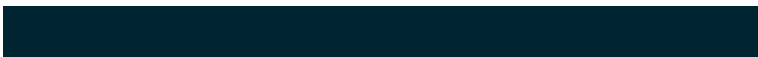
9479134



6647152



33712



9264

Previews

White Background



This preview shows how the Decimal color 14591120 looks on a white background.

Color Contrast Check

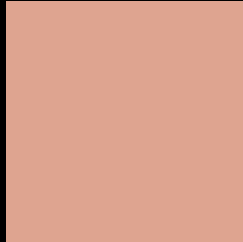
Large Text (above 18pt) WCAG AA × Fail

Any Text WCAG AA × Fail

Large Text (above 18pt) WCAG AAA × Fail

Any Text WCAG AAA × Fail

Black Background



This preview shows how the Decimal color 14591120 looks on a black background.

Color Contrast Check

Large Text (above 18pt) WCAG AA ✓ Pass

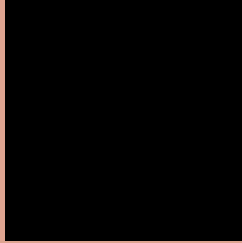
Any Text WCAG AA ✓ Pass

Large Text (above 18pt) WCAG AAA ✓ Pass

Any Text WCAG AAA ✓ Pass

If you want to check with other color combinations, try the [Color Contrast Checker](#).

Decimal 14591120 Background



This preview shows how black text looks on a background with the Decimal color 14591120.



This preview shows how white text looks on a background with the Decimal color 14591120.

Color Blindness Simulation

Color vision deficiency is a very complex topic, and I could not describe the different causes any better than Wikipedia does, so if you want to learn more, you should check out their [article about color blindness](#).

Dichromacy



Original Color
14591120

Protanopia
12300694

Deuteranopia
13609871



Tritanopia
14786732

Trichromacy



Original Color
14591120

Protanomaly
13151380

Deuteranomaly
13936783

Tritanomaly
14721442

Monochromacy



Original Color
14591120

Achromatopsia
11776947

Achromatomaly
12824230

CSS Examples

Text

The CSS property to change the color of the text to Decimal 14591120 is called "color". The color property can be set on classes, ids or directly on the HTML element.

This example shows how text in the color #DEA490 looks like.

```
.text, #text, p{  
    color:#DEA490  
}
```

If you want to add a text shadow in that color use the text-shadow property, you can generate a text shadow directly with our [CSS Text Shadow Generator](#).

Here you see how black text with a 4 pixel #DEA490 colored shadow looks like.

```
.shadow{ text-shadow: 4px 4px 2px #DEA490
}
```

Border

The CSS property to change the border of an element to Decimal 14591120 is called "border". The border property can be set on classes, ids or directly on the HTML element.

This example shows the color as border, it can be applied via the CSS property "border" or "border-color".

```
.border, #border, table{ border:4px solid
#DEA490 }
```

If only the border color should be changed use the property `border-color`.

```
.border{ border-color:#DEA490 }
```

If you want to add a box shadow in that color use:

Here you see how a box with a 4 pixel #DEA490 colored shadow looks like.

```
.boxshadow{ -moz-box-shadow:4px 4px 4px  
4px #DEA490; -webkit-box-shadow:4px 4px  
4px 4px #DEA490; box-shadow:4px 4px 4px  
4px #DEA490 }
```

Background

The CSS property to change the background color of an element to Decimal 14591120 is called "background". The background property can be set on classes, ids or directly on the HTML element.

```
.background, #background, body{  
background:#DEA490 }
```

If only the background color should be changed can be used:

```
.background{ background-color:#DEA490 }
```

This example shows the color as background, it is applied via the CSS property "background".

To optimize and compress your CSS code, you can use our [online CSS compressor and optimizer](#) based on csstidy. If you want to create a linear or radial gradient as background or border, check our [CSS Gradient Generator](#).

Hey! You found this booklet interesting? Support Converting Colors with the new Membership Option!

The pro membership hides all ads, plus gives you double the colors in the color bucket, and more awesome pro features!

[Learn more, Memberships starting at \\$2.50/m!](#)

**Follow me
on Twitter!**

@ConvertingColor