

# Converting Colors

Decimal(14592658)

Have a look what the booklet for  
Decimal(14592658) contains.

<b>Decimal(14592658)</b> .....	3
<i><b>Conversions</b></i> .....	4
<i><b>Details</b></i> .....	6
<i><b>Harmonies</b></i> .....	11
<i><b>Previews</b></i> .....	23
<i><b>Color Blindness Simulation</b></i> .....	26
<i><b>CSS Examples</b></i> .....	29

# **Color**

**Decimal(14592658)**

# Conversions

## Conversions Part 1

Format	Color
Hex	DEAA92
RGB	222, 170, 146
RGB Percent	87%, 67%, 57%
CMY	0.1294, 0.3333, 0.4275
CMYK	0.00, 0.23, 0.34, 0.13
HSL	19°, 54%, 72%
HSV	19°, 34%, 87%
XYZ	49.6872, 46.3544, 33.5226
YIQ	182.8120, 38.6960, 3.5600

# Conversions

## Conversions Part 2

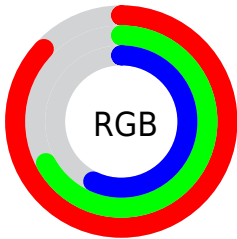
Format	Color
R <sub>Y</sub> B	222, 181, 146
Decimal	14592658
CIE Lab	73.77, 15.82, 19.74
CIE LCh	74, 25.296, 51.279
Yxy	46.3544, 0.3835, 0.3578
Android (android.graphics.Color)	4292782738 (0xFFDEAA92)
YUV	182.8120, -18.1483, 34.3679
Hunter-Lab	68.0840, 11.1209, 18.4661

# Details

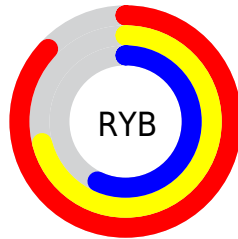
The Decimal color **14592658** is a light color, and the websafe version is hex **CC9999**. A complement of this color would be **9619166**, and the grayscale version is **12040119**.

A 20% lighter version of the original color is **16769480**, and **10843743** is the 20% darker color. If you saturate the color by 10%, you get **14588796**, and if you desaturate by 10%, it is **14596520**.

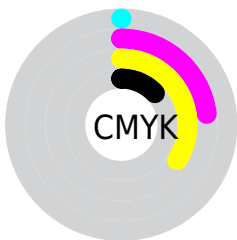
# Distribution



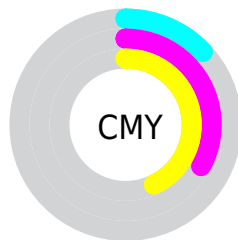
- Red (87%)
- Green (67%)
- Blue (57%)



- Red (87%)
- Yellow (71%)
- Blue (57%)



- Cyan (0%)
- Magenta (23%)
- Yellow (34%)
- Black (13%)



- Cyan (13%)
- Magenta (33%)
- Yellow (43%)

# Brightness & Saturation Gradients

These gradients show how the Decimal color 14592658 changes by changing the brightness by 10 percent. The first figure shows a shift by +10% for each color and the second figure -10%.

Similar to the brightness gradients but the following saturation gradients show a change of the Decimal color 14592658 by changing the saturation by 10% instead.



 14592658

 14592658

16777215

 12685176

 16769480

 10843743

 16776932

 9067848

 7292209

 5582620

 4004099

 2490624

 0

 14592658

 14592658

 14588796

 14596520

 14584934

 14600382

 14580815

 14604501

 14576953

 14608363

 14573091

 14612223

 14569229

 14614527

 14566912

# Harmonies

## Analogous

The Analogous color harmony consists of three colors that are next to each other on the color wheel.



15050150



14592658



13480328

# Triad

The Triadic color harmony groups three colors that are evenly spaced from another and form a triangle on the color wheel.



14592658



8569517



11580128

# Complementary

The Complementary color scheme is a pair of colors which are on the opposite of each other on the color wheel.



14592658



9619166

# Split Complementary

Split-complementary colors differ from the complementary color scheme. The scheme consists of three colors, the original color and two neighbors of the complement color.



9484771



14592658



7586501

# Square

The Square scheme is like the rectangle color scheme, but the four colors are evenly spaced on the color wheel.



14592658



10207128



7913433



13478611

# Rectangle

The Rectangle color scheme consists of four colors that form a rectangle on the color wheel.



14592658



12498824



7913433



10859746

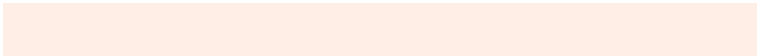


# Sweetspot

The Sweet Spot groups the original color and five complimentary colors.



14592658



16772838



14586567



8418672



0



8421504



# Same Dimension

The Same Dimension uses a secret algorithm to generate beautiful new colors.



14592658



16758678



14602130



7367013



11548672



3149568

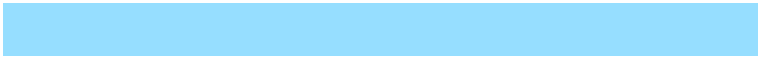


# Inverse Universe

The Inverse Universe completely reimagines the original color for something new.



9619166



9887487



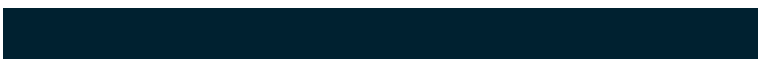
9609694



6647152



30896



8496



# Previews

## White Background



This preview shows how the Decimal color 14592658 looks on a white background.

## Color Contrast Check

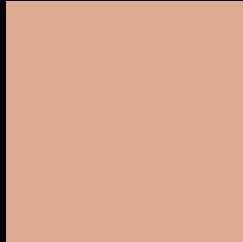
Large Text (above 18pt) WCAG AA × Fail

Any Text WCAG AA × Fail

Large Text (above 18pt) WCAG AAA × Fail

Any Text WCAG AAA × Fail

# Black Background



This preview shows how the Decimal color 14592658 looks on a black background.

## Color Contrast Check

Large Text (above 18pt) WCAG AA ✓ Pass

Any Text WCAG AA ✓ Pass

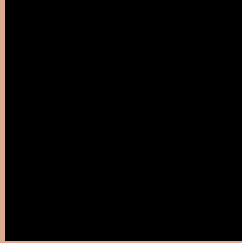
Large Text (above 18pt) WCAG AAA ✓ Pass

Any Text WCAG AAA ✓ Pass

If you want to check with other color combinations, try the [Color Contrast Checker](#).



## Decimal 14592658 Background



This preview shows how black text looks on a background with the Decimal color 14592658.



This preview shows how white text looks on a background with the Decimal color 14592658.

# Color Blindness Simulation

Color vision deficiency is a very complex topic, and I could not describe the different causes any better than Wikipedia does, so if you want to learn more, you should check out their [article about color blindness](#).

## Dichromacy





**Tritanopia**  
14788018

# Trichromacy



**Original Color**  
14592658

**Protanomaly**  
13349269

**Deuteranomaly**  
14200209

**Tritanomaly**  
14722982

# Monochromacy



**Original Color**  
14592658

**Achromatopsia**  
12040119

**Achromatomaly**  
12956330

# CSS Examples

## Text

The CSS property to change the color of the text to Decimal 14592658 is called "color". The color property can be set on classes, ids or directly on the HTML element.

This example shows how text in the color #DEAA92 looks like.

```
.text, #text, p{  
    color:#DEAA92  
}
```

If you want to add a text shadow in that color use the text-shadow property, you can generate a text shadow directly with our [CSS Text Shadow Generator](#).

Here you see how black text with a 4 pixel #DEAA92 colored shadow looks like.

```
.shadow{ text-shadow: 4px 4px 2px #DEAA92
}
```

## Border

The CSS property to change the border of an element to Decimal 14592658 is called "border". The border property can be set on classes, ids or directly on the HTML element.

This example shows the color as border, it can be applied via the CSS property "border" or "border-color".

```
.border, #border, table{ border:4px solid
#DEAA92 }
```

If only the border color should be changed use the property border-color.

```
.border{ border-color:#DEAA92 }
```

If you want to add a box shadow in that color use:

Here you see how a box with a 4 pixel #DEAA92 colored shadow looks like.

```
.boxshadow{ -moz-box-shadow:4px 4px 4px  
4px #DEAA92; -webkit-box-shadow:4px 4px  
4px 4px #DEAA92; box-shadow:4px 4px 4px  
4px #DEAA92 }
```

# Background

The CSS property to change the background color of an element to Decimal 14592658 is called "background". The background property can be set on classes, ids or directly on the HTML element.

```
.background, #background, body{  
background:#DEAA92 }
```

If only the background color should be changed can be used:

```
.background{ background-color:#DEAA92 }
```

This example shows the color as background, it is applied via the CSS property "background".

To optimize and compress your CSS code, you can use our [online CSS compressor and optimizer](#) based on csstidy. If you want to create a linear or radial gradient as background or border, check our [CSS Gradient Generator](#).



Hey! You found this booklet interesting? Support Converting Colors with the new Membership Option!

The pro membership hides all ads, plus gives you double the colors in the color bucket, and more awesome pro features!

**[Learn more, Memberships starting at \\$2.50/m!](#)**

**Follow me  
on Twitter!**

@ConvertingColor