

Converting Colors

Decimal(14592690)

Have a look what the booklet for
Decimal(14592690) contains.

Decimal(14592690)	3
<i>Conversions</i>	4
<i>Details</i>	6
<i>Harmonies</i>	11
<i>Previews</i>	23
<i>Color Blindness Simulation</i>	26
<i>CSS Examples</i>	29

Color

Decimal(14592690)

Conversions

Conversions Part 1

Format	Color
Hex	DEAAB2
RGB	222, 170, 178
RGB Percent	87%, 67%, 70%
CMY	0.1294, 0.3333, 0.3020
CMYK	0.00, 0.23, 0.20, 0.13
HSL	351°, 44%, 77%
HSV	351°, 23%, 87%
XYZ	52.5348, 47.4934, 48.5177
YIQ	186.4600, 28.4240, 13.5120

Conversions

Conversions Part 2

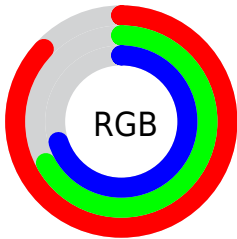
Format	Color
R _Y B	222, 170, 178
Decimal	14592690
CIE Lab	74.50, 20.23, 3.28
CIE LCh	75, 20.496, 9.214
Yxy	47.4934, 0.3537, 0.3197
Android (android.graphics.Color)	4292782770 (0xFFDEAAB2)
YUV	186.4600, -4.1708, 31.1686
Hunter-Lab	68.9155, 15.4699, 6.4996

Details

The Decimal color **14592690** is a light color, and the websafe version is hex **CC9999**. A complement of this color would be **11198166**, and the grayscale version is **12237498**.

A 20% lighter version of the original color is **16769770**, and **10909309** is the 20% darker color. If you saturate the color by 10%, you get **14587039**, and if you desaturate by 10%, it is **14598341**.

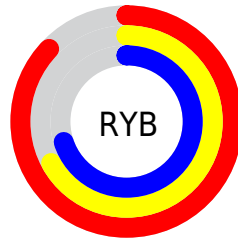
Distribution



Red (87%)

Green (67%)

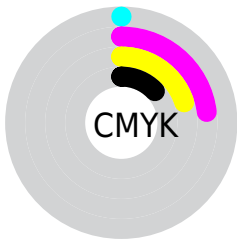
Blue (70%)



Red (87%)

Yellow (67%)

Blue (70%)

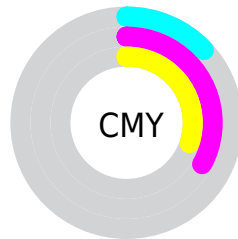


Cyan (0%)

Magenta (23%)

Yellow (20%)

Black (13%)



Cyan (13%)

Magenta (33%)

Yellow (30%)

Brightness & Saturation Gradients

These gradients show how the Decimal color 14592690 changes by changing the brightness by 10 percent. The first figure shows a shift by +10% for each color and the second figure -10%.

Similar to the brightness gradients but the following saturation gradients show a change of the Decimal color 14592690 by changing the saturation by 10% instead.

 14592690

 14592690

16777215

 12750743

 16769770

 10909309

16776959

 9133413

 7423309

 5778998

 4134945

 2686985

 0

 14592690

 14592690

 14587039

 14598341

 14581388

 14603992

 14575482

 14609898

 14569831

 14614525

 14564180

 14614527

 14558529

 14552879

 14549026

Harmonies

Analogous

The Analogous color harmony consists of three colors that are next to each other on the color wheel.



14003397



14592690



14527648

Triad

The Triadic color harmony groups three colors that are evenly spaced from another and form a triangle on the color wheel.



14592690



11255194



9616858

Complementary

The Complementary color scheme is a pair of colors which are on the opposite of each other on the color wheel.



14592690



11198166

Split Complementary

Split-complementary colors differ from the complementary color scheme. The scheme consists of three colors, the original color and two neighbors of the complement color.



8765902



14592690



9879977

Square

The Square scheme is like the rectangle color scheme, but the four colors are evenly spaced on the color wheel.



14592690



12630162



8897213



11122652

Rectangle

The Rectangle color scheme consists of four colors that form a rectangle on the color wheel.



14592690



14069912



8897213



9223895

Sweetspot

The Sweet Spot groups the original color and five complimentary colors.



14592690



16772592



14002910



8418679



0



8421504

Same Dimension

The Same Dimension uses a secret algorithm to generate beautiful new colors.



14592690



16758979



14597034



7365991



11534363



3145735

Inverse Universe

The Inverse Universe completely reimagines the original color for something new.



14592690



16758979



11193822



7365991



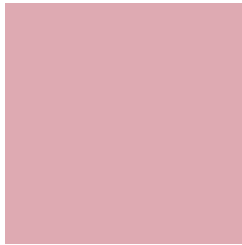
11534363



3145735

Previews

White Background



This preview shows how the Decimal color 14592690 looks on a white background.

Color Contrast Check

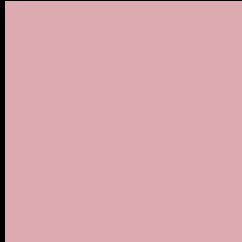
Large Text (above 18pt) WCAG AA × Fail

Any Text WCAG AA × Fail

Large Text (above 18pt) WCAG AAA × Fail

Any Text WCAG AAA × Fail

Black Background



This preview shows how the Decimal color 14592690 looks on a black background.

Color Contrast Check

Large Text (above 18pt) WCAG AA ✓ Pass

Any Text WCAG AA ✓ Pass

Large Text (above 18pt) WCAG AAA ✓ Pass

Any Text WCAG AAA ✓ Pass

If you want to check with other color combinations, try the [Color Contrast Checker](#).

Decimal 14592690 Background



This preview shows how black text looks on a background with the Decimal color 14592690.




This preview shows how white text looks on a background with the Decimal color 14592690.

Color Blindness Simulation

Color vision deficiency is a very complex topic, and I could not describe the different causes any better than Wikipedia does, so if you want to learn more, you should check out their [article about color blindness](#).

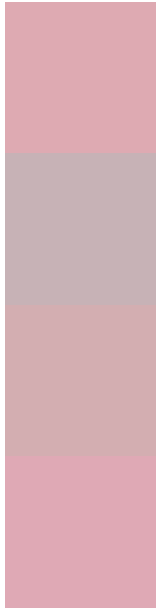
Dichromacy





Tritanopia
14657974

Trichromacy



Original Color
14592690

Protanomaly
13087414

Deuteranomaly
13872817

Tritanomaly
14657973

Monochromacy



Original Color
14592690

Achromatopsia
12237498

Achromatomaly
13087927

CSS Examples

Text

The CSS property to change the color of the text to Decimal 14592690 is called "color". The color property can be set on classes, ids or directly on the HTML element.

This example shows how text in the color #DEAAB2 looks like.

```
.text, #text, p{  
    color:#DEAAB2  
}
```

If you want to add a text shadow in that color use the text-shadow property, you can generate a text shadow directly with our [CSS Text Shadow Generator](#).

Here you see how black text with a 4 pixel #DEAAB2 colored shadow looks like.

```
.shadow{ text-shadow: 4px 4px 2px #DEAAB2
}
```

Border

The CSS property to change the border of an element to Decimal 14592690 is called "border". The border property can be set on classes, ids or directly on the HTML element.

This example shows the color as border, it can be applied via the CSS property "border" or "border-color".

```
.border, #border, table{ border:4px solid
#DEAAB2 }
```

If only the border color should be changed use the property `border-color`.

```
.border{ border-color:#DEAAB2 }
```

If you want to add a box shadow in that color use:

Here you see how a box with a 4 pixel #DEAAB2 colored shadow looks like.

```
.boxshadow{ -moz-box-shadow:4px 4px 4px  
4px #DEAAB2; -webkit-box-shadow:4px 4px  
4px 4px #DEAAB2; box-shadow:4px 4px 4px  
4px #DEAAB2 }
```

Background

The CSS property to change the background color of an element to Decimal 14592690 is called "background". The background property can be set on classes, ids or directly on the HTML element.

```
.background, #background, body{  
background:#DEAAB2 }
```

If only the background color should be changed can be used:

```
.background{ background-color:#DEAAB2 }
```

This example shows the color as background, it is applied via the CSS property "background".

To optimize and compress your CSS code, you can use our [online CSS compressor and optimizer](#) based on csstidy. If you want to create a linear or radial gradient as background or border, check our [CSS Gradient Generator](#).

Hey! You found this booklet interesting? Support Converting Colors with the new Membership Option!

The pro membership hides all ads, plus gives you double the colors in the color bucket, and more awesome pro features!

[Learn more, Memberships starting at \\$2.50/m!](#)

**Follow me
on Twitter!**

@ConvertingColor