

Converting Colors

Decimal(14592920)

Have a look what the booklet for
Decimal(14592920) contains.

Decimal(14592920)	3
<i>Conversions</i>	4
<i>Details</i>	6
<i>Harmonies</i>	11
<i>Previews</i>	23
<i>Color Blindness Simulation</i>	26
<i>CSS Examples</i>	29

Color

Decimal(14592920)

Conversions

Conversions Part 1

Format	Color
Hex	DEAB98
RGB	222, 171, 152
RGB Percent	87%, 67%, 60%
CMY	0.1294, 0.3294, 0.4039
CMYK	0.00, 0.23, 0.32, 0.13
HSL	16°, 51%, 73%
HSV	16°, 32%, 87%
XYZ	50.3546, 46.9224, 36.1087
YIQ	184.0830, 36.4950, 4.9030

Conversions

Conversions Part 2

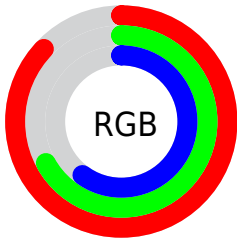
Format	Color
R_{YB}	222, 178, 152
Decimal	14592920
CIE Lab	74.14, 16.04, 16.98
CIE LCh	74, 23.360, 46.621
Yxy	46.9224, 0.3775, 0.3518
Android (android.graphics.Color)	4292783000 (0xFFDEAB98)
YUV	184.0830, -15.8169, 33.2532
Hunter-Lab	68.4999, 11.3413, 16.6961

Details

The Decimal color **14592920** is a light color, and the websafe version is hex **CC9999**. A complement of this color would be **10013662**, and the grayscale version is **12105912**.

A 20% lighter version of the original color is **16769742**, and **10909541** is the 20% darker color. If you saturate the color by 10%, you get **14588802**, and if you desaturate by 10%, it is **14597038**.

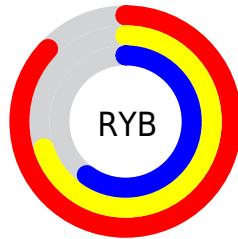
Distribution



Red (87%)

Green (67%)

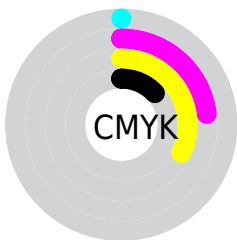
Blue (60%)



Red (87%)

Yellow (70%)

Blue (60%)

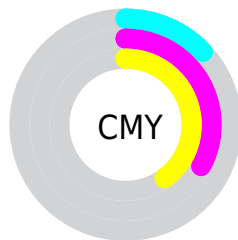


Cyan (0%)

Magenta (23%)

Yellow (32%)

Black (13%)



Cyan (13%)

Magenta (33%)

Yellow (40%)

Brightness & Saturation Gradients

These gradients show how the Decimal color 14592920 changes by changing the brightness by 10 percent. The first figure shows a shift by +10% for each color and the second figure -10%.

Similar to the brightness gradients but the following saturation gradients show a change of the Decimal color 14592920 by changing the saturation by 10% instead.

 14592920

 14592920

16777215

 12685438

 16769742

 10909541

 16777195

 9068109

 7358006

 5648161

 4004363

 2490880

 0

 14592920

 14592920

 14588802

 14597038

 14584684

 14601156

 14580309

 14605531

 14576191

 14609649

 14572073

 14613759

 14567955

 14614527

 14564352

Harmonies

Analogous

The Analogous color harmony consists of three colors that are next to each other on the color wheel.



14919595



14592920



13611661

Triad

The Triadic color harmony groups three colors that are evenly spaced from another and form a triangle on the color wheel.



14592920



9093804



11384031

Complementary

The Complementary color scheme is a pair of colors which are on the opposite of each other on the color wheel.



14592920



10013662

Split Complementary

Split-complementary colors differ from the complementary color scheme. The scheme consists of three colors, the original color and two neighbors of the complement color.



9485279



14592920



8110786

Square

The Square scheme is like the rectangle color scheme, but the four colors are evenly spaced on the color wheel.



14592920



10665624



8241365



13151700

Rectangle

The Rectangle color scheme consists of four colors that form a rectangle on the color wheel.



14592920



12760716



8241365



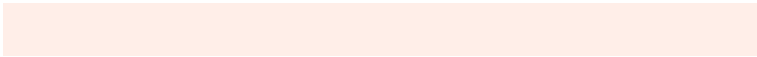
10729441

Sweetspot

The Sweet Spot groups the original color and five complimentary colors.



14592920



16772840



14588107



8418673



0



8421504

Same Dimension

The Same Dimension uses a secret algorithm to generate beautiful new colors.



14592920



16758942



14601880



7366757



11546624



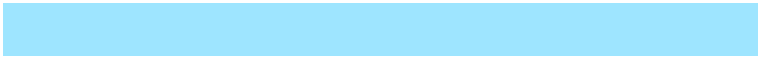
3149056

Inverse Universe

The Inverse Universe completely reimagines the original color for something new.



10013662



10413567



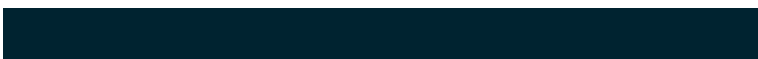
10004702



6647152



32944



9008

Previews

White Background



This preview shows how the Decimal color 14592920 looks on a white background.

Color Contrast Check

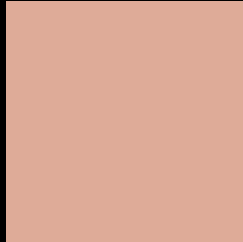
Large Text (above 18pt) WCAG AA × Fail

Any Text WCAG AA × Fail

Large Text (above 18pt) WCAG AAA × Fail

Any Text WCAG AAA × Fail

Black Background



This preview shows how the Decimal color 14592920 looks on a black background.

Color Contrast Check

Large Text (above 18pt) WCAG AA ✓ Pass

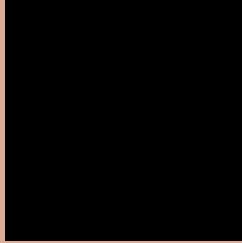
Any Text WCAG AA ✓ Pass

Large Text (above 18pt) WCAG AAA ✓ Pass

Any Text WCAG AAA ✓ Pass

If you want to check with other color combinations, try the [Color Contrast Checker](#).

Decimal 14592920 Background



This preview shows how black text looks on a background with the Decimal color 14592920.



This preview shows how white text looks on a background with the Decimal color 14592920.

Color Blindness Simulation

Color vision deficiency is a very complex topic, and I could not describe the different causes any better than Wikipedia does, so if you want to learn more, you should check out their [article about color blindness](#).

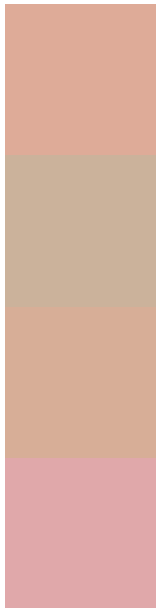
Dichromacy





Tritanopia
14788532

Trichromacy



Original Color
14592920

Protanomaly
13349531

Deuteranomaly
14134935

Tritanomaly
14723242

Monochromacy



Original Color
14592920

Achromatopsia
12105912

Achromatomaly
13022124

CSS Examples

Text

The CSS property to change the color of the text to Decimal 14592920 is called "color". The color property can be set on classes, ids or directly on the HTML element.

This example shows how text in the color #DEAB98 looks like.

```
.text, #text, p{  
  color:#DEAB98  
}
```

If you want to add a text shadow in that color use the text-shadow property, you can generate a text shadow directly with our [CSS Text Shadow Generator](#).

Here you see how black text with a 4 pixel #DEAB98 colored shadow looks like.

```
.shadow{ text-shadow: 4px 4px 2px #DEAB98  
}
```

Border

The CSS property to change the border of an element to Decimal 14592920 is called "border". The border property can be set on classes, ids or directly on the HTML element.

This example shows the color as border, it can be applied via the CSS property "border" or "border-color".

```
.border, #border, table{ border:4px solid  
#DEAB98 }
```

If only the border color should be changed use the property `border-color`.

```
.border{ border-color:#DEAB98 }
```

If you want to add a box shadow in that color use:

Here you see how a box with a 4 pixel #DEAB98 colored shadow looks like.

```
.boxshadow{ -moz-box-shadow:4px 4px 4px  
4px #DEAB98; -webkit-box-shadow:4px 4px  
4px 4px #DEAB98; box-shadow:4px 4px 4px  
4px #DEAB98 }
```

Background

The CSS property to change the background color of an element to Decimal 14592920 is called "background". The background property can be set on classes, ids or directly on the HTML element.

```
.background, #background, body{  
background:#DEAB98 }
```

If only the background color should be changed can be used:

```
.background{ background-color:#DEAB98 }
```

This example shows the color as background, it is applied via the CSS property "background".

To optimize and compress your CSS code, you can use our [online CSS compressor and optimizer](#) based on csstidy. If you want to create a linear or radial gradient as background or border, check our [CSS Gradient Generator](#).

Hey! You found this booklet interesting? Support Converting Colors with the new Membership Option!

The pro membership hides all ads, plus gives you double the colors in the color bucket, and more awesome pro features!

[Learn more, Memberships starting at \\$2.50/m!](#)

**Follow me
on Twitter!**

@ConvertingColor