

Converting Colors

Decimal(14593174)

Have a look what the booklet for
Decimal(14593174) contains.

Decimal(14593174)	3
<i>Conversions</i>	4
<i>Details</i>	6
<i>Harmonies</i>	11
<i>Previews</i>	23
<i>Color Blindness Simulation</i>	26
<i>CSS Examples</i>	29

Color

Decimal(14593174)

Conversions

Conversions Part 1

Format	Color
Hex	DEAC96
RGB	222, 172, 150
RGB Percent	87%, 67%, 59%
CMY	0.1294, 0.3255, 0.4118
CMYK	0.00, 0.23, 0.32, 0.13
HSL	18°, 52%, 73%
HSV	18°, 32%, 87%
XYZ	50.3817, 47.2367, 35.3163
YIQ	184.4420, 36.8620, 3.7580

Conversions

Conversions Part 2

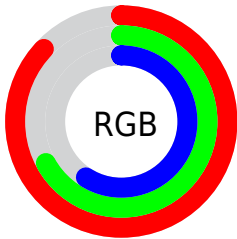
Format	Color
R_{YB}	222, 182, 150
Decimal	14593174
CIE _{Lab}	74.34, 15.25, 18.34
CIE _{LCh}	74, 23.857, 50.260
Yxy	47.2367, 0.3790, 0.3553
Android (android.graphics.Color)	4292783254 (0xFFDEAC96)
YUV	184.4420, -16.9799, 32.9384
Hunter-Lab	68.7289, 10.5738, 17.6441

Details

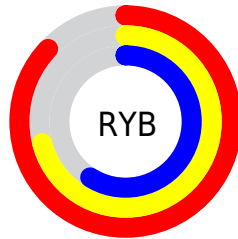
The Decimal color **14593174** is a light color, and the websafe version is hex **CC9999**. A complement of this color would be **9881822**, and the grayscale version is **12171705**.

A 20% lighter version of the original color is **16769996**, and **10909795** is the 20% darker color. If you saturate the color by 10%, you get **14589312**, and if you desaturate by 10%, it is **14597036**.

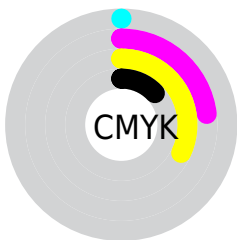
Distribution



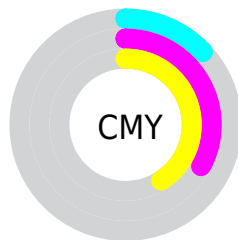
- Red (87%)
- Green (67%)
- Blue (59%)



- Red (87%)
- Yellow (71%)
- Blue (59%)



- Cyan (0%)
- Magenta (23%)
- Yellow (32%)
- Black (13%)



- Cyan (13%)
- Magenta (33%)
- Yellow (41%)

Brightness & Saturation Gradients

These gradients show how the Decimal color 14593174 changes by changing the brightness by 10 percent. The first figure shows a shift by +10% for each color and the second figure -10%.

Similar to the brightness gradients but the following saturation gradients show a change of the Decimal color 14593174 by changing the saturation by 10% instead.

 14593174

 14593174

16777215

 12685692

 16769996

 10909795

 16777192

 9068363

 7358260

 5648415

 4004616

 2491136

 0

 14593174

 14593174

 14589312

 14597036

 14585194

 14601154

 14581331

 14605017

 14577213

 14609135

 14573351

 14612991

 14569489

 14614527

 14566400

Harmonies

Analogous

The Analogous color harmony consists of three colors that are next to each other on the color wheel.



14985385



14593174



13546380

Triad

The Triadic color harmony groups three colors that are evenly spaced from another and form a triangle on the color wheel.



14593174



8897455



11646176

Complementary

The Complementary color scheme is a pair of colors which are on the opposite of each other on the color wheel.



14593174



9881822

Split Complementary

Split-complementary colors differ from the complementary color scheme. The scheme consists of three colors, the original color and two neighbors of the complement color.



9681890



14593174



7979973

Square

The Square scheme is like the rectangle color scheme, but the four colors are evenly spaced on the color wheel.



14593174



10469530



8241368



13413587

Rectangle

The Rectangle color scheme consists of four colors that form a rectangle on the color wheel.



14593174



12630156



8241368



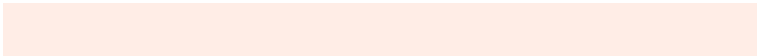
10991330

Sweetspot

The Sweet Spot groups the original color and five complimentary colors.



14593174



16772582



14587592



8418672



0



8421504

Same Dimension

The Same Dimension uses a secret algorithm to generate beautiful new colors.



14593174



16759452



14602390



7366757



11548160



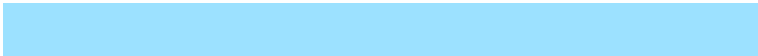
3149568

Inverse Universe

The Inverse Universe completely reimagines the original color for something new.



9881822



10281471



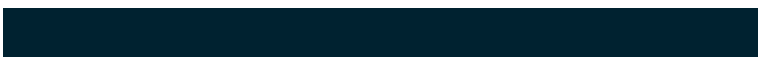
9872606



6647152



31408



8752

Previews

White Background



This preview shows how the Decimal color 14593174 looks on a white background.

Color Contrast Check

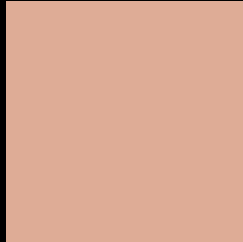
Large Text (above 18pt) WCAG AA × Fail

Any Text WCAG AA × Fail

Large Text (above 18pt) WCAG AAA × Fail

Any Text WCAG AAA × Fail

Black Background



This preview shows how the Decimal color 14593174 looks on a black background.

Color Contrast Check

Large Text (above 18pt) WCAG AA ✓ Pass

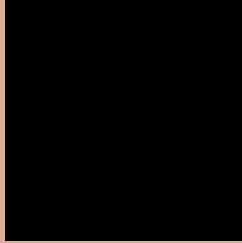
Any Text WCAG AA ✓ Pass

Large Text (above 18pt) WCAG AAA ✓ Pass

Any Text WCAG AAA ✓ Pass

If you want to check with other color combinations, try the [Color Contrast Checker](#).

Decimal 14593174 Background



This preview shows how black text looks on a background with the Decimal color 14593174.



This preview shows how white text looks on a background with the Decimal color 14593174.

Color Blindness Simulation

Color vision deficiency is a very complex topic, and I could not describe the different causes any better than Wikipedia does, so if you want to learn more, you should check out their [article about color blindness](#).

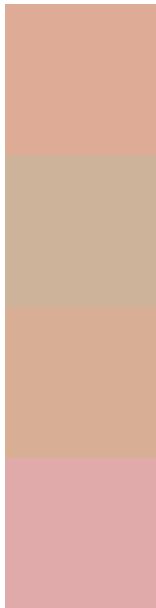
Dichromacy





Tritanopia
14788789

Trichromacy



Original Color
14593174

Protanomaly
13415321

Deuteranomaly
14200725

Tritanomaly
14723498

Monochromacy



Original Color
14593174

Achromatopsia
12105912

Achromatomaly
13022380

CSS Examples

Text

The CSS property to change the color of the text to Decimal 14593174 is called "color". The color property can be set on classes, ids or directly on the HTML element.

This example shows how text in the color #DEAC96 looks like.

```
.text, #text, p{  
    color:#DEAC96  
}
```

If you want to add a text shadow in that color use the text-shadow property, you can generate a text shadow directly with our [CSS Text Shadow Generator](#).

Here you see how black text with a 4 pixel #DEAC96 colored shadow looks like.

```
.shadow{ text-shadow: 4px 4px 2px #DEAC96
}
```

Border

The CSS property to change the border of an element to Decimal 14593174 is called "border". The border property can be set on classes, ids or directly on the HTML element.

This example shows the color as border, it can be applied via the CSS property "border" or "border-color".

```
.border, #border, table{ border:4px solid
#DEAC96 }
```

If only the border color should be changed use the property `border-color`.

```
.border{ border-color:#DEAC96 }
```

If you want to add a box shadow in that color use:

Here you see how a box with a 4 pixel #DEAC96 colored shadow looks like.

```
.boxshadow{ -moz-box-shadow:4px 4px 4px  
4px #DEAC96; -webkit-box-shadow:4px 4px  
4px 4px #DEAC96; box-shadow:4px 4px 4px  
4px #DEAC96 }
```

Background

The CSS property to change the background color of an element to Decimal 14593174 is called "background". The background property can be set on classes, ids or directly on the HTML element.

```
.background, #background, body{  
background:#DEAC96 }
```

If only the background color should be changed can be used:

```
.background{ background-color:#DEAC96 }
```

This example shows the color as background, it is applied via the CSS property "background".

To optimize and compress your CSS code, you can use our [online CSS compressor and optimizer](#) based on csstidy. If you want to create a linear or radial gradient as background or border, check our [CSS Gradient Generator](#).

Hey! You found this booklet interesting? Support Converting Colors with the new Membership Option!

The pro membership hides all ads, plus gives you double the colors in the color bucket, and more awesome pro features!

[Learn more, Memberships starting at \\$2.50/m!](#)

**Follow me
on Twitter!**

@ConvertingColor