

# Converting Colors

Decimal(14593719)

Have a look what the booklet for  
Decimal(14593719) contains.

<b>Decimal(14593719)</b> .....	3
<i><b>Conversions</b></i> .....	4
<i><b>Details</b></i> .....	6
<i><b>Harmonies</b></i> .....	11
<i><b>Previews</b></i> .....	23
<i><b>Color Blindness Simulation</b></i> .....	26
<i><b>CSS Examples</b></i> .....	29

# **Color**

**Decimal(14593719)**

# Conversions

## Conversions Part 1

Format	Color
Hex	DEAEB7
RGB	222, 174, 183
RGB Percent	87%, 68%, 72%
CMY	0.1294, 0.3176, 0.2824
CMYK	0.00, 0.22, 0.18, 0.13
HSL	349°, 42%, 78%
HSV	349°, 22%, 87%
XYZ	53.8075, 49.2206, 51.4643
YIQ	189.3780, 25.7190, 12.9750

# Conversions

## Conversions Part 2

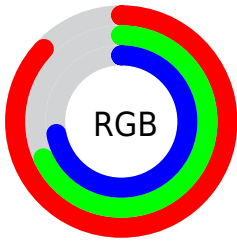
Format	Color
R <sub>Y</sub> B	222, 174, 183
Decimal	14593719
CIE Lab	75.59, 18.85, 2.12
CIE LCh	76, 18.964, 6.415
Yxy	49.2206, 0.3483, 0.3186
Android (android.graphics.Color)	4292783799 (0xFFDEAEB7)
YUV	189.3780, -3.1444, 28.6095
Hunter-Lab	70.1574, 14.1259, 5.6177

# Details

The Decimal color **14593719** is a light color, and the websafe version is hex **CC9999**. A complement of this color would be **11460309**, and the grayscale version is **12434877**.

A 20% lighter version of the original color is **16770799**, and **10910082** is the 20% darker color. If you saturate the color by 10%, you get **14588069**, and if you desaturate by 10%, it is **14599369**.

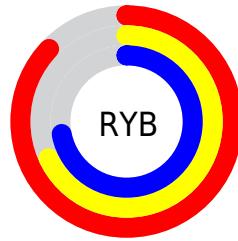
# Distribution



Red (87%)

Green (68%)

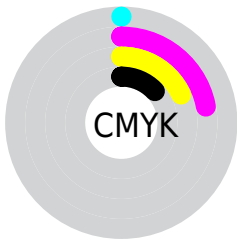
Blue (72%)



Red (87%)

Yellow (68%)

Blue (72%)

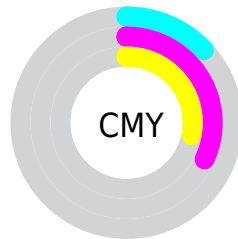


Cyan (0%)

Magenta (22%)

Yellow (18%)

Black (13%)



Cyan (13%)

Magenta (32%)

Yellow (28%)

# Brightness & Saturation Gradients

These gradients show how the Decimal color 14593719 changes by changing the brightness by 10 percent. The first figure shows a shift by +10% for each color and the second figure -10%.

Similar to the brightness gradients but the following saturation gradients show a change of the Decimal color 14593719 by changing the saturation by 10% instead.



 14593719

 14593719

16777215

 12751772

 16770799

 10910082

 9134185

 7424081

 5779770

 4201253

 2688271

 0

 14593719

 14593719

 14588069

 14599369

 14582419

 14605019

 14576513

 14610925

 14570863

 14614527

 14565213

 14559563

 14553913

 14549034

# Harmonies

## Analogous

The Analogous color harmony consists of three colors that are next to each other on the color wheel.



13938889



14593719



14594214

# Triad

The Triadic color harmony groups three colors that are evenly spaced from another and form a triangle on the color wheel.



14593719



11583646



9945306

# Complementary

The Complementary color scheme is a pair of colors which are on the opposite of each other on the color wheel.



14593719



11460309

# Split Complementary

Split-complementary colors differ from the complementary color scheme. The scheme consists of three colors, the original color and two neighbors of the complement color.



9225166



14593719



10339244

# Square

The Square scheme is like the rectangle color scheme, but the four colors are evenly spaced on the color wheel.



14593719



12892824



9422013



11254493

# Rectangle

The Rectangle color scheme consists of four colors that form a rectangle on the color wheel.



14593719



14201758



9422013



9617879



# Sweetspot

The Sweet Spot groups the original color and five complimentary colors.



14593719



16773363



13938398



8419192



0



8421504



# Same Dimension

The Same Dimension uses a secret algorithm to generate beautiful new colors.



14593719



16760265



14597294



7365991



11534369



3145737



# Inverse Universe

The Inverse Universe completely reimagines the original color for something new.



14593719



16760265



11456734



7365991



11534369

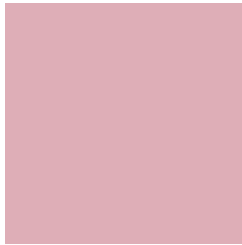


3145737



# Previews

## White Background



This preview shows how the Decimal color 14593719 looks on a white background.

## Color Contrast Check

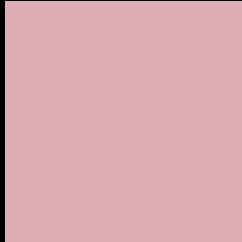
Large Text (above 18pt) WCAG AA × Fail

Any Text WCAG AA × Fail

Large Text (above 18pt) WCAG AAA × Fail

Any Text WCAG AAA × Fail

# Black Background



This preview shows how the Decimal color 14593719 looks on a black background.

## Color Contrast Check

Large Text (above 18pt) WCAG AA ✓ Pass

Any Text WCAG AA ✓ Pass

Large Text (above 18pt) WCAG AAA ✓ Pass

Any Text WCAG AAA ✓ Pass

If you want to check with other color combinations, try the [Color Contrast Checker](#).



## Decimal 14593719 Background



This preview shows how black text looks on a background with the Decimal color 14593719.



This preview shows how white text looks on a background with the Decimal color 14593719.

# Color Blindness Simulation

Color vision deficiency is a very complex topic, and I could not describe the different causes any better than Wikipedia does, so if you want to learn more, you should check out their [article about color blindness](#).


## Dichromacy



**Original Color**  
14593719

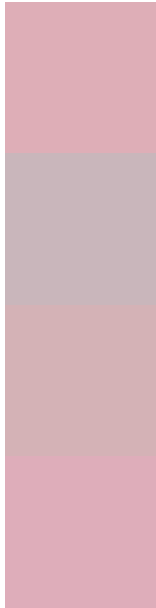
**Protanopia**  
12434110

**Deuteranopia**  
13546678



**Tritanopia**  
14593467

# Trichromacy



**Original Color**  
14593719

**Protanomaly**  
13219515

**Deuteranomaly**  
13939382

**Tritanomaly**  
14593466

# Monochromacy



**Original Color**  
14593719

**Achromatopsia**  
12434877

**Achromatomaly**  
13220027

# CSS Examples

## Text

The CSS property to change the color of the text to Decimal 14593719 is called "color". The color property can be set on classes, ids or directly on the HTML element.

This example shows how text in the color #DEAEB7 looks like.

```
.text, #text, p{  
  color:#DEAEB7  
}
```

If you want to add a text shadow in that color use the text-shadow property, you can generate a text shadow directly with our [CSS Text Shadow Generator](#).

Here you see how black text with a 4 pixel #DEAEB7 colored shadow looks like.

```
.shadow{ text-shadow: 4px 4px 2px #DEAEB7  
}
```

## Border

The CSS property to change the border of an element to Decimal 14593719 is called "border". The border property can be set on classes, ids or directly on the HTML element.

This example shows the color as border, it can be applied via the CSS property "border" or "border-color".

```
.border, #border, table{ border:4px solid  
#DEAEB7 }
```

If only the border color should be changed use the property `border-color`.

```
.border{ border-color:#DEAEB7 }
```

If you want to add a box shadow in that color use:

Here you see how a box with a 4 pixel #DEAEB7 colored shadow looks like.

```
.boxshadow{ -moz-box-shadow:4px 4px 4px  
4px #DEAEB7; -webkit-box-shadow:4px 4px  
4px 4px #DEAEB7; box-shadow:4px 4px 4px  
4px #DEAEB7 }
```

# Background

The CSS property to change the background color of an element to Decimal 14593719 is called "background". The background property can be set on classes, ids or directly on the HTML element.

```
.background, #background, body{  
background:#DEAEB7 }
```

If only the background color should be changed can be used:

```
.background{ background-color:#DEAEB7 }
```

This example shows the color as background, it is applied via the CSS property "background".

To optimize and compress your CSS code, you can use our [online CSS compressor and optimizer](#) based on csstidy. If you want to create a linear or radial gradient as background or border, check our [CSS Gradient Generator](#).



Hey! You found this booklet interesting? Support Converting Colors with the new Membership Option!

The pro membership hides all ads, plus gives you double the colors in the color bucket, and more awesome pro features!

**[Learn more, Memberships starting at \\$2.50/m!](#)**

**Follow me  
on Twitter!**

@ConvertingColor