

Converting Colors

Decimal(14593929)

Have a look what the booklet for
Decimal(14593929) contains.

Decimal(14593929)	3
<i>Conversions</i>	4
<i>Details</i>	6
<i>Harmonies</i>	11
<i>Previews</i>	23
<i>Color Blindness Simulation</i>	26
<i>CSS Examples</i>	29

Color

Decimal(14593929)

Conversions

Conversions Part 1

Format	Color
Hex	DEAF89
RGB	222, 175, 137
RGB Percent	87%, 69%, 54%
CMY	0.1294, 0.3137, 0.4627
CMYK	0.00, 0.21, 0.38, 0.13
HSL	27°, 56%, 70%
HSV	27°, 38%, 87%
XYZ	49.9695, 47.9957, 30.2973
YIQ	184.7210, 40.2100, -1.8540

Conversions

Conversions Part 2

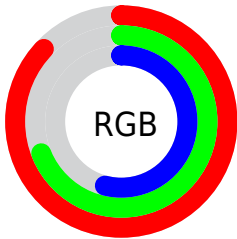
Format	Color
R _Y B	222, 206, 137
Decimal	14593929
CIE Lab	74.82, 12.07, 26.02
CIE LCh	75, 28.683, 65.114
Yxy	47.9957, 0.3896, 0.3742
Android (android.graphics.Color)	4292784009 (0xFFDEAF89)
YUV	184.7210, -23.5265, 32.6937
Hunter-Lab	69.2789, 7.5105, 22.5663

Details

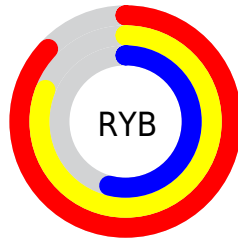
The Decimal color **14593929** is a light color, and the websafe version is hex **CC9966**. A complement of this color would be **9025758**, and the grayscale version is **12171705**.

A 20% lighter version of the original color is **16771007**, and **10845015** is the 20% darker color. If you saturate the color by 10%, you get **14590835**, and if you desaturate by 10%, it is **14597023**.

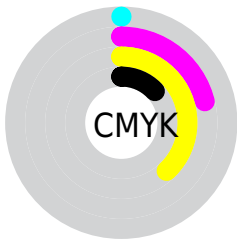
Distribution



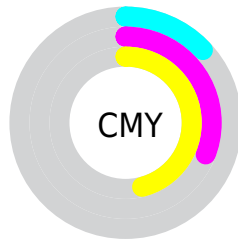
- Red (87%)
- Green (69%)
- Blue (54%)



- Red (87%)
- Yellow (81%)
- Blue (54%)



- Cyan (0%)
- Magenta (21%)
- Yellow (38%)
- Black (13%)



- Cyan (13%)
- Magenta (31%)
- Yellow (46%)

Brightness & Saturation Gradients

These gradients show how the Decimal color 14593929 changes by changing the brightness by 10 percent. The first figure shows a shift by +10% for each color and the second figure -10%.

Similar to the brightness gradients but the following saturation gradients show a change of the Decimal color 14593929 by changing the saturation by 10% instead.

 14593929

 14593929

16777215

 12686447

 16771007

 10845015

 16777179

 9069119

 16777207

 7293481

 5583635

 4005376

 2361088

 0

 14593929

 14593929

 14590835

 14597023

 14587485

 14600373

 14584390

 14603468

 14581296

 14606562

 14578202

 14609656

 14574852

 14612991

 14574336

 14614527

Harmonies

Analogous

The Analogous color harmony consists of three colors that are next to each other on the color wheel.



15509659



14593929



13088900

Triad

The Triadic color harmony groups three colors that are evenly spaced from another and form a triangle on the color wheel.



14593929



7456700



12759267

Complementary

The Complementary color scheme is a pair of colors which are on the opposite of each other on the color wheel.



14593929



9025758

Split Complementary

Split-complementary colors differ from the complementary color scheme. The scheme consists of three colors, the original color and two neighbors of the complement color.



10336748



14593929



6866646

Square

The Square scheme is like the rectangle color scheme, but the four colors are evenly spaced on the color wheel.



14593929



9160097



8045031



14592207

Rectangle

The Rectangle color scheme consists of four colors that form a rectangle on the color wheel.



14593929



11845000



8045031



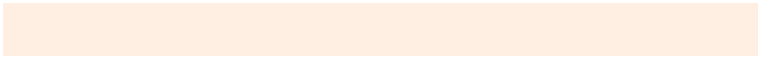
11973608

Sweetspot

The Sweet Spot groups the original color and five complimentary colors.



14593929



16773091



14584249



8418927



0



8421504

Same Dimension

The Same Dimension uses a secret algorithm to generate beautiful new colors.



14593929



16760458



14604425



7367269



11554560



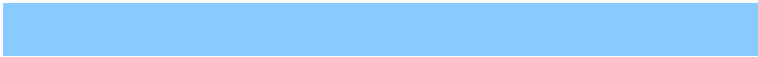
3151360

Inverse Universe

The Inverse Universe completely reimagines the original color for something new.



9025758



9096191



9015262



6646640



25008



6960

Previews

White Background



This preview shows how the Decimal color 14593929 looks on a white background.

Color Contrast Check

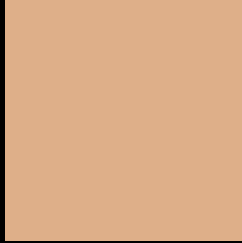
Large Text (above 18pt) WCAG AA × Fail

Any Text WCAG AA × Fail

Large Text (above 18pt) WCAG AAA × Fail

Any Text WCAG AAA × Fail

Black Background



This preview shows how the Decimal color 14593929 looks on a black background.

Color Contrast Check

Large Text (above 18pt) WCAG AA ✓ Pass

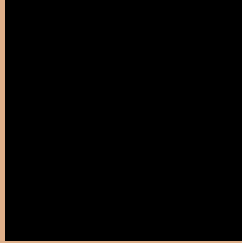
Any Text WCAG AA ✓ Pass

Large Text (above 18pt) WCAG AAA ✓ Pass

Any Text WCAG AAA ✓ Pass

If you want to check with other color combinations, try the [Color Contrast Checker](#).

Decimal 14593929 Background



This preview shows how black text looks on a background with the Decimal color 14593929.



This preview shows how white text looks on a background with the Decimal color 14593929.

Color Blindness Simulation

Color vision deficiency is a very complex topic, and I could not describe the different causes any better than Wikipedia does, so if you want to learn more, you should check out their [article about color blindness](#).

Dichromacy





Tritanopia
14920118

Trichromacy



Original Color
14593929

Protanomaly
13546892

Deuteranomaly
14397577

Tritanomaly
14789542

Monochromacy



Original Color
14593929

Achromatopsia
12171705

Achromatomaly
13022632

CSS Examples

Text

The CSS property to change the color of the text to Decimal 14593929 is called "color". The color property can be set on classes, ids or directly on the HTML element.

This example shows how text in the color #DEAF89 looks like.

```
.text, #text, p{  
    color:#DEAF89  
}
```

If you want to add a text shadow in that color use the text-shadow property, you can generate a text shadow directly with our [CSS Text Shadow Generator](#).

Here you see how black text with a 4 pixel #DEAF89 colored shadow looks like.

```
.shadow{ text-shadow: 4px 4px 2px #DEAF89
}
```

Border

The CSS property to change the border of an element to Decimal 14593929 is called "border". The border property can be set on classes, ids or directly on the HTML element.

This example shows the color as border, it can be applied via the CSS property "border" or "border-color".

```
.border, #border, table{ border:4px solid
#DEAF89 }
```

If only the border color should be changed use the property `border-color`.

```
.border{ border-color:#DEAF89 }
```

If you want to add a box shadow in that color use:

Here you see how a box with a 4 pixel #DEAF89 colored shadow looks like.

```
.boxshadow{ -moz-box-shadow:4px 4px 4px  
4px #DEAF89; -webkit-box-shadow:4px 4px  
4px 4px #DEAF89; box-shadow:4px 4px 4px  
4px #DEAF89 }
```

Background

The CSS property to change the background color of an element to Decimal 14593929 is called "background". The background property can be set on classes, ids or directly on the HTML element.

```
.background, #background, body{  
background:#DEAF89 }
```

If only the background color should be changed can be used:

```
.background{ background-color:#DEAF89 }
```

This example shows the color as background, it is applied via the CSS property "background".

To optimize and compress your CSS code, you can use our [online CSS compressor and optimizer](#) based on csstidy. If you want to create a linear or radial gradient as background or border, check our [CSS Gradient Generator](#).

Hey! You found this booklet interesting? Support Converting Colors with the new Membership Option!

The pro membership hides all ads, plus gives you double the colors in the color bucket, and more awesome pro features!

[Learn more, Memberships starting at \\$2.50/m!](#)

**Follow me
on Twitter!**

@ConvertingColor