

# Converting Colors

Decimal(14595263)

Have a look what the booklet for  
Decimal(14595263) contains.

|  |    |
|--|----|
| <b>Decimal(14595263)</b> .....                 | 3  |
| <i><b>Conversions</b></i> .....                | 4  |
| <i><b>Details</b></i> .....                    | 6  |
| <i><b>Harmonies</b></i> .....                  | 11 |
| <i><b>Previews</b></i> .....                   | 23 |
| <i><b>Color Blindness Simulation</b></i> ..... | 26 |
| <i><b>CSS Examples</b></i> .....               | 29 |

# **Color**

**Decimal(14595263)**

# Conversions

## Conversions Part 1

| Format      | Color                      |
|-------------|----------------------------|
| Hex         | DEB4BF                     |
| RGB         | 222, 180, 191              |
| RGB Percent | 87%, 71%, 75%              |
| CMY         | 0.1294, 0.2941, 0.2510     |
| CMYK        | 0.00, 0.19, 0.14, 0.13     |
| HSL         | 344°, 39%, 79%             |
| HSV         | 344°, 19%, 87%             |
| XYZ         | 55.8494, 51.9337, 56.3708  |
| YIQ         | 193.8120, 21.5010, 12.3250 |

# Conversions

## Conversions Part 2

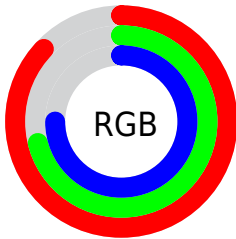
| Format                              | Color                         |
|-------------------------------------|-------------------------------|
| R <sub>Y</sub> B                    | 222, 180, 191                 |
| Decimal                             | 14595263                      |
| CIE Lab                             | 77.24, 16.89, 0.17            |
| CIE LCh                             | 77, 16.890, 0.567             |
| Yxy                                 | 51.9337, 0.3402,<br>0.3164    |
| Android<br>(android.graphics.Color) | 4292785343<br>(0xFFDEB4BF)    |
| YUV                                 | 193.8120, -1.3863,<br>24.7209 |
| Hunter-Lab                          | 72.0650, 12.2213,<br>4.0676   |

# Details

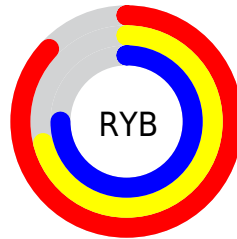
The Decimal color **14595263** is a light color, and the websafe version is hex **FFCCCC**. A complement of this color would be **11853523**, and the grayscale version is **12763842**.

A 20% lighter version of the original color is **16772343**, and **10911626** is the 20% darker color. If you saturate the color by 10%, you get **14589615**, and if you desaturate by 10%, it is **14600911**.

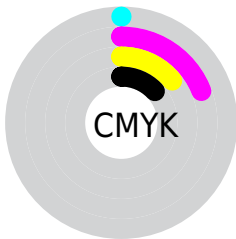
# Distribution



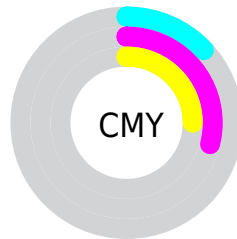
- Red (87%)
- Green (71%)
- Blue (75%)



- Red (87%)
- Yellow (71%)
- Blue (75%)



- Cyan (0%)
- Magenta (19%)
- Yellow (14%)
- Black (13%)



- Cyan (13%)
- Magenta (29%)
- Yellow (25%)

# Brightness & Saturation Gradients

These gradients show how the Decimal color 14595263 changes by changing the brightness by 10 percent. The first figure shows a shift by +10% for each color and the second figure -10%.

Similar to the brightness gradients but the following saturation gradients show a change of the Decimal color 14595263 by changing the saturation by 10% instead.



 14595263

 14595263

16777215

 12753316

 16772343

 10911626

 9201264

 7491160

 5846849

 4268331

 2755606

 851968

 0

 14595263

 14595263

 14589615

 14600911

 14583966

 14606560

 14578062

 14612464

 14572413

 14614527

 14566765

 14561117

 14555468

 14549564

 14549050

# Harmonies

## Analogous

The Analogous color harmony consists of three colors that are next to each other on the color wheel.



13940430



14595263



14726576

# Triad

The Triadic color harmony groups three colors that are evenly spaced from another and form a triangle on the color wheel.



14595263



12239780



10339801

# Complementary

The Complementary color scheme is a pair of colors which are on the opposite of each other on the color wheel.



14595263



11853523

# Split Complementary

Split-complementary colors differ from the complementary color scheme. The scheme consists of three colors, the original color and two neighbors of the complement color.



9881550



14595263



11060911

# Square

The Square scheme is like the rectangle color scheme, but the four colors are evenly spaced on the color wheel.



14595263



13352608



10143934



11452638

# Rectangle

The Rectangle color scheme consists of four colors that form a rectangle on the color wheel.



14595263



14464935



10143934



10077910

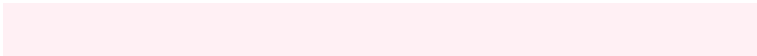


# Sweetspot

The Sweet Spot groups the original color and five complimentary colors.



14595263



16773364



13874398



8419193



0



8421504



# Same Dimension

The Same Dimension uses a secret algorithm to generate beautiful new colors.



14595263



16762068



14597812



7365992



11534382



3145741



# Inverse Universe

The Inverse Universe completely reimagines the original color for something new.



14595263



16762068



11850974



7365992



11534382

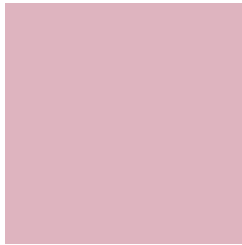


3145741



# Previews

## White Background



This preview shows how the Decimal color 14595263 looks on a white background.

## Color Contrast Check

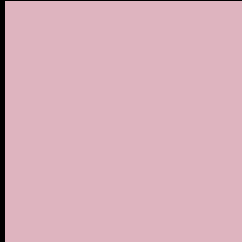
Large Text (above 18pt) WCAG AA × Fail

Any Text WCAG AA × Fail

Large Text (above 18pt) WCAG AAA × Fail

Any Text WCAG AAA × Fail

# Black Background



This preview shows how the Decimal color 14595263 looks on a black background.

## Color Contrast Check

Large Text (above 18pt) WCAG AA ✓ Pass

Any Text WCAG AA ✓ Pass

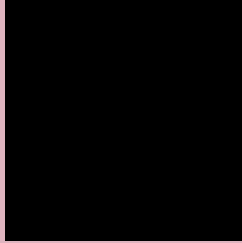
Large Text (above 18pt) WCAG AAA ✓ Pass

Any Text WCAG AAA ✓ Pass

If you want to check with other color combinations, try the [Color Contrast Checker](#).



## Decimal 14595263 Background



This preview shows how black text looks on a background with the Decimal color 14595263.




This preview shows how white text looks on a background with the Decimal color 14595263.

# Color Blindness Simulation

Color vision deficiency is a very complex topic, and I could not describe the different causes any better than Wikipedia does, so if you want to learn more, you should check out their [article about color blindness](#).

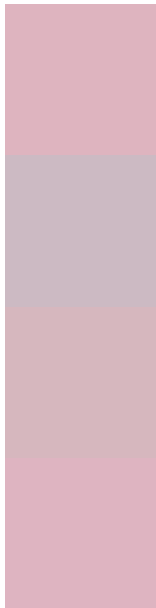
## Dichromacy





**Tritanopia**  
14595266

# Trichromacy



**Original Color**  
14595263

**Protanomaly**  
13417155

**Deuteranomaly**  
14071742

**Tritanomaly**  
14595265

# Monochromacy



**Original Color**  
14595263

**Achromatopsia**  
12763842

**Achromatomaly**  
13417921

# CSS Examples

## Text

The CSS property to change the color of the text to Decimal 14595263 is called "color". The color property can be set on classes, ids or directly on the HTML element.

This example shows how text in the color #DEB4BF looks like.

```
.text, #text, p{  
    color:#DEB4BF  
}
```

If you want to add a text shadow in that color use the text-shadow property, you can generate a text shadow directly with our [CSS Text Shadow Generator](#).

Here you see how black text with a 4 pixel #DEB4BF colored shadow looks like.

```
.shadow{ text-shadow: 4px 4px 2px #DEB4BF } }
```

## Border

The CSS property to change the border of an element to Decimal 14595263 is called "border". The border property can be set on classes, ids or directly on the HTML element.

This example shows the color as border, it can be applied via the CSS property "border" or "border-color".

```
.border, #border, table{ border:4px solid #DEB4BF } }
```

If only the border color should be changed use the property `border-color`.

```
.border{ border-color:#DEB4BF }
```

If you want to add a box shadow in that color use:

Here you see how a box with a 4 pixel #DEB4BF colored shadow looks like.

```
.boxshadow{ -moz-box-shadow:4px 4px 4px  
4px #DEB4BF; -webkit-box-shadow:4px 4px  
4px 4px #DEB4BF; box-shadow:4px 4px 4px  
4px #DEB4BF }
```

# Background

The CSS property to change the background color of an element to Decimal 14595263 is called "background". The background property can be set on classes, ids or directly on the HTML element.

```
.background, #background, body{  
background:#DEB4BF }
```

If only the background color should be changed can be used:

```
.background{ background-color:#DEB4BF }
```

This example shows the color as background, it is applied via the CSS property "background".

To optimize and compress your CSS code, you can use our [online CSS compressor and optimizer](#) based on csstidy. If you want to create a linear or radial gradient as background or border, check our [CSS Gradient Generator](#).



Hey! You found this booklet interesting? Support Converting Colors with the new Membership Option!

The pro membership hides all ads, plus gives you double the colors in the color bucket, and more awesome pro features!

**[Learn more, Memberships starting at \\$2.50/m!](#)**

**Follow me  
on Twitter!**

@ConvertingColor