

Converting Colors

Decimal(14597565)

Have a look what the booklet for
Decimal(14597565) contains.

| | |
|--|----|
| Decimal(14597565) | 3 |
| <i>Conversions</i> | 4 |
| <i>Details</i> | 6 |
| <i>Harmonies</i> | 11 |
| <i>Previews</i> | 23 |
| <i>Color Blindness Simulation</i> | 26 |
| <i>CSS Examples</i> | 29 |

Color

Decimal(14597565)

Conversions

Conversions Part 1

| Format | Color |
|-------------|---------------------------|
| Hex | DEBDBD |
| RGB | 222, 189, 189 |
| RGB Percent | 87%, 74%, 74% |
| CMY | 0.1294, 0.2588, 0.2588 |
| CMYK | 0.00, 0.15, 0.15, 0.13 |
| HSL | 0°, 33%, 81% |
| HSV | 0°, 15%, 87% |
| XYZ | 57.5071, 55.5989, 55.8448 |
| YIQ | 198.8670, 19.6680, 6.9960 |

Conversions

Conversions Part 2

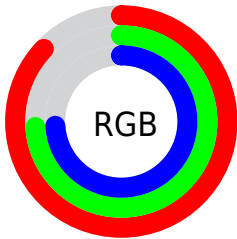
| Format | Color |
|-------------------------------------|-------------------------------|
| R _Y B | 222, 189, 189 |
| Decimal | 14597565 |
| CIE Lab | 79.38, 11.75, 4.36 |
| CIE LCh | 79, 12.536, 20.375 |
| Yxy | 55.5989, 0.3404, 0.3291 |
| Android (android.graphics.Color) | 4292787645 (0xFFDEBDBD) |
| YUV | 198.8670, -4.8644, 20.2876 |
| Hunter-Lab | 74.5647, 7.1778, 7.7903 |

Details

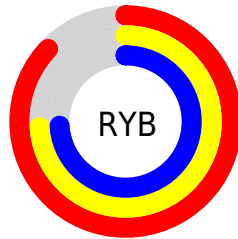
The Decimal color **14597565** is a light color, and the websafe version is hex **FFCCCC**. A complement of this color would be **12443358**, and the grayscale version is **13092807**.

A 20% lighter version of the original color is **16774645**, and **10979464** is the 20% darker color. If you saturate the color by 10%, you get **14591911**, and if you desaturate by 10%, it is **14603219**.

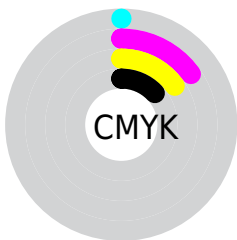
Distribution



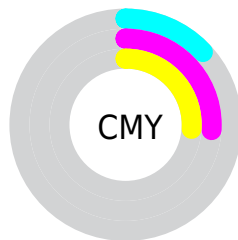
- Red (87%)
- Green (74%)
- Blue (74%)



- Red (87%)
- Yellow (74%)
- Blue (74%)



- Cyan (0%)
- Magenta (15%)
- Yellow (15%)
- Black (13%)



- Cyan (13%)
- Magenta (26%)
- Yellow (26%)

Brightness & Saturation Gradients

These gradients show how the Decimal color 14597565 changes by changing the brightness by 10 percent. The first figure shows a shift by +10% for each color and the second figure -10%.

Similar to the brightness gradients but the following saturation gradients show a change of the Decimal color 14597565 by changing the saturation by 10% instead.

 14597565

 14597565

16777215

 12755618

 16774645

 10979464

 9203310

 7493206

 5848639

 4270121

 2757653

 1310720

 0

 14597565

 14597565

 14591911

 14603219

 14586257

 14608873

 14580346

 14614527

 14574692

 14569038

 14563384

 14557730

 14551819

 14548992

Harmonies

Analogous

The Analogous color harmony consists of three colors that are next to each other on the color wheel.



14335433



14597565



14401459

Triad

The Triadic color harmony groups three colors that are evenly spaced from another and form a triangle on the color wheel.



14597565



12110518



11847643

Complementary

The Complementary color scheme is a pair of colors which are on the opposite of each other on the color wheel.



14597565



12443358

Split Complementary

Split-complementary colors differ from the complementary color scheme. The scheme consists of three colors, the original color and two neighbors of the complement color.



11193046



14597565



11389888

Square

The Square scheme is like the rectangle color scheme, but the four colors are evenly spaced on the color wheel.



14597565



13026991



10996940



12764122

Rectangle

The Rectangle color scheme consists of four colors that form a rectangle on the color wheel.



14597565



14074287



10996940



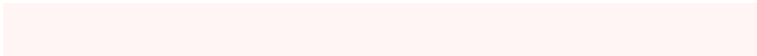
11585754

Sweetspot

The Sweet Spot groups the original color and five complimentary colors.



14597565



16774645



14597598



8419705



0



8421504

Same Dimension

The Same Dimension uses a secret algorithm to generate beautiful new colors.



14597565



16765393



14601917



7365989



11534336



3145728

Inverse Universe

The Inverse Universe completely reimagines the original color for something new.



12443358



13762559



12439262



6647920



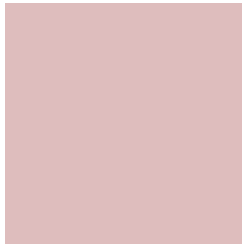
45232



12336

Previews

White Background



This preview shows how the Decimal color 14597565 looks on a white background.

Color Contrast Check

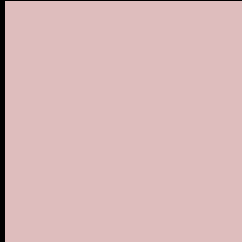
Large Text (above 18pt) WCAG AA × Fail

Any Text WCAG AA × Fail

Large Text (above 18pt) WCAG AAA × Fail

Any Text WCAG AAA × Fail

Black Background



This preview shows how the Decimal color 14597565 looks on a black background.

Color Contrast Check

Large Text (above 18pt) WCAG AA ✓ Pass

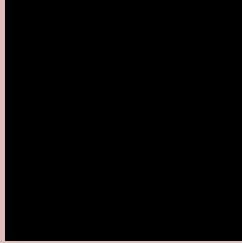
Any Text WCAG AA ✓ Pass

Large Text (above 18pt) WCAG AAA ✓ Pass

Any Text WCAG AAA ✓ Pass

If you want to check with other color combinations, try the [Color Contrast Checker](#).

Decimal 14597565 Background



This preview shows how black text looks on a background with the Decimal color 14597565.



This preview shows how white text looks on a background with the Decimal color 14597565.

Color Blindness Simulation

Color vision deficiency is a very complex topic, and I could not describe the different causes any better than Wikipedia does, so if you want to learn more, you should check out their [article about color blindness](#).

Dichromacy



Original Color
14597565

Protanopia
13223105

Deuteranopia
14401213



Tritanopia
14728138

Trichromacy



Original Color
14597565

Protanomaly
13746624

Deuteranomaly
14466749

Tritanomaly
14662853

Monochromacy



Original Color
14597565

Achromatopsia
13092807

Achromatomaly
13616067

CSS Examples

Text

The CSS property to change the color of the text to Decimal 14597565 is called "color". The color property can be set on classes, ids or directly on the HTML element.

This example shows how text in the color #DEBDBD looks like.

```
.text, #text, p{  
  color:#DEBDBD  
}
```

If you want to add a text shadow in that color use the text-shadow property, you can generate a text shadow directly with our [CSS Text Shadow Generator](#).

Here you see how black text with a 4 pixel #DEBDBD colored shadow looks like.

```
.shadow{ text-shadow: 4px 4px 2px #DEBDBD
}
```

Border

The CSS property to change the border of an element to Decimal 14597565 is called "border". The border property can be set on classes, ids or directly on the HTML element.

This example shows the color as border, it can be applied via the CSS property "border" or "border-color".

```
.border, #border, table{ border:4px solid
#DEBDBD }
```

If only the border color should be changed use the property `border-color`.

```
.border{ border-color:#DEBDBD }
```

If you want to add a box shadow in that color use:

Here you see how a box with a 4 pixel #DEBDBD colored shadow looks like.

```
.boxshadow{ -moz-box-shadow:4px 4px 4px  
4px #DEBDBD; -webkit-box-shadow:4px 4px  
4px 4px #DEBDBD; box-shadow:4px 4px 4px  
4px #DEBDBD }
```

Background

The CSS property to change the background color of an element to Decimal 14597565 is called "background". The background property can be set on classes, ids or directly on the HTML element.

```
.background, #background, body{  
background:#DEBDBD }
```

If only the background color should be changed can be used:

```
.background{ background-color:#DEBDBD }
```

This example shows the color as background, it is applied via the CSS property "background".

To optimize and compress your CSS code, you can use our [online CSS compressor and optimizer](#) based on csstidy. If you want to create a linear or radial gradient as background or border, check our [CSS Gradient Generator](#).

Hey! You found this booklet interesting? Support Converting Colors with the new Membership Option!

The pro membership hides all ads, plus gives you double the colors in the color bucket, and more awesome pro features!

[Learn more, Memberships starting at \\$2.50/m!](#)

**Follow me
on Twitter!**

@ConvertingColor