

Converting Colors

Decimal(14598864)

Have a look what the booklet for
Decimal(14598864) contains.

Decimal(14598864)	3
<i>Conversions</i>	4
<i>Details</i>	6
<i>Harmonies</i>	11
<i>Previews</i>	23
<i>Color Blindness Simulation</i>	26
<i>CSS Examples</i>	29

Color

Decimal(14598864)

Conversions

Conversions Part 1

Format	Color
Hex	DEC2D0
RGB	222, 194, 208
RGB Percent	87%, 76%, 82%
CMY	0.1294, 0.2392, 0.1843
CMYK	0.00, 0.13, 0.06, 0.13
HSL	330°, 30%, 82%
HSV	330°, 13%, 87%
XYZ	60.8012, 58.6672, 67.7939
YIQ	203.9680, 12.1940, 10.2900

Conversions

Conversions Part 2

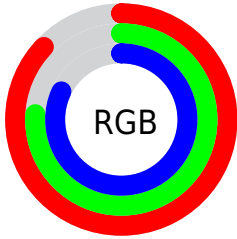
Format	Color
R _Y B	222, 194, 208
Decimal	14598864
CIE Lab	81.11, 12.25, -3.35
CIE LCh	81, 12.699, 344.690
Yxy	58.6672, 0.3247, 0.3133
Android (android.graphics.Color)	4292788944 (0xFFDEC2D0)
YUV	203.9680, 1.9878, 15.8141
Hunter-Lab	76.5945, 7.6538, 1.1386

Details

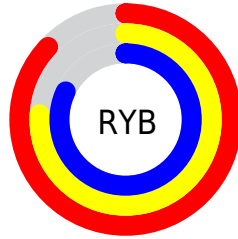
The Decimal color **14598864** is a light color, and the websafe version is hex **CCCCCC**. A complement of this color would be **12771024**, and the grayscale version is **13421772**.

A 20% lighter version of the original color is **16776191**, and **10980506** is the 20% darker color. If you saturate the color by 10%, you get **14593221**, and if you desaturate by 10%, it is **14604507**.

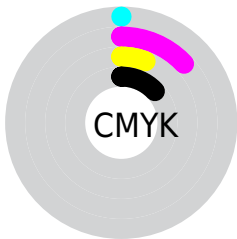
Distribution



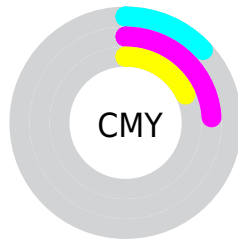
- Red (87%)
- Green (76%)
- Blue (82%)



- Red (87%)
- Yellow (76%)
- Blue (82%)



- Cyan (0%)
- Magenta (13%)
- Yellow (6%)
- Black (13%)



- Cyan (13%)
- Magenta (24%)
- Yellow (18%)

Brightness & Saturation Gradients

These gradients show how the Decimal color 14598864 changes by changing the brightness by 10 percent. The first figure shows a shift by +10% for each color and the second figure -10%.

Similar to the brightness gradients but the following saturation gradients show a change of the Decimal color 14598864 by changing the saturation by 10% instead.

 14598864

 14598864

16777215

 12756916

 16776191

 10980506

 9204608

 7559783

 5915471

 4336696

 2889506

 1638413

 0

 14598864

 14598864

 14593221

 14604507

 14587578

 14610150

 14581679

 14614513

 14576036

 14614524

 14570393

 14614527

 14564749

 14559106

 14553207

 14549103

Harmonies

Analogous

The Analogous color harmony consists of three colors that are next to each other on the color wheel.



13878746



14598864



14926276

Triad

The Triadic color harmony groups three colors that are evenly spaced from another and form a triangle on the color wheel.



14598864



13486770



11390938

Complementary

The Complementary color scheme is a pair of colors which are on the opposite of each other on the color wheel.



14598864



12771024

Split Complementary

Split-complementary colors differ from the complementary color scheme. The scheme consists of three colors, the original color and two neighbors of the complement color.



11325903



14598864



12570296

Square

The Square scheme is like the rectangle color scheme, but the four colors are evenly spaced on the color wheel.



14598864



14272435



11784387



11980000

Rectangle

The Rectangle color scheme consists of four colors that form a rectangle on the color wheel.



14598864



14926524



11784387



11325654

Sweetspot

The Sweet Spot groups the original color and five complimentary colors.



14598864



16774650



13681374



8419708



0



8421504

Same Dimension

The Same Dimension uses a secret algorithm to generate beautiful new colors.



14598864



16767468



14598850



7365995



11534424



3145752

Inverse Universe

The Inverse Universe completely reimagines the original color for something new.



14598864



16767468



12771038



7365995



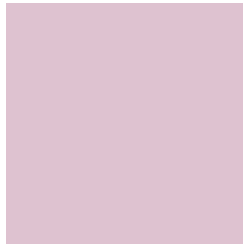
11534424



3145752

Previews

White Background



This preview shows how the Decimal color 14598864 looks on a white background.

Color Contrast Check

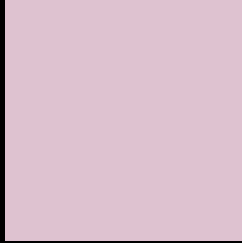
Large Text (above 18pt) WCAG AA × Fail

Any Text WCAG AA × Fail

Large Text (above 18pt) WCAG AAA × Fail

Any Text WCAG AAA × Fail

Black Background



This preview shows how the Decimal color 14598864 looks on a black background.

Color Contrast Check

Large Text (above 18pt) WCAG AA ✓ Pass

Any Text WCAG AA ✓ Pass

Large Text (above 18pt) WCAG AAA ✓ Pass

Any Text WCAG AAA ✓ Pass

If you want to check with other color combinations, try the [Color Contrast Checker](#).

Decimal 14598864 Background



This preview shows how black text looks on a background with the Decimal color 14598864.



This preview shows how white text looks on a background with the Decimal color 14598864.

Color Blindness Simulation

Color vision deficiency is a very complex topic, and I could not describe the different causes any better than Wikipedia does, so if you want to learn more, you should check out their [article about color blindness](#).


Dichromacy



Original Color
14598864

Protanopia
13289684

Deuteranopia
14336976



Tritanopia
14598865

Trichromacy



Original Color
14598864

Protanomaly
13747923

Deuteranomaly
14402512

Tritanomaly
14598865

Monochromacy



Original Color
14598864

Achromatopsia
13421772

Achromatomaly
13879501

CSS Examples

Text

The CSS property to change the color of the text to Decimal 14598864 is called "color". The color property can be set on classes, ids or directly on the HTML element.

This example shows how text in the color #DEC2D0 looks like.

```
.text, #text, p{  
  color:#DEC2D0  
}
```

If you want to add a text shadow in that color use the text-shadow property, you can generate a text shadow directly with our [CSS Text Shadow Generator](#).

Here you see how black text with a 4 pixel #DEC2D0 colored shadow looks like.

```
.shadow{ text-shadow: 4px 4px 2px #DEC2D0
}
```

Border

The CSS property to change the border of an element to Decimal 14598864 is called "border". The border property can be set on classes, ids or directly on the HTML element.

This example shows the color as border, it can be applied via the CSS property "border" or "border-color".

```
.border, #border, table{ border:4px solid
#DEC2D0 }
```

If only the border color should be changed use the property `border-color`.

```
.border{ border-color:#DEC2D0 }
```

If you want to add a box shadow in that color use:

Here you see how a box with a 4 pixel #DEC2D0 colored shadow looks like.

```
.boxshadow{ -moz-box-shadow:4px 4px 4px  
4px #DEC2D0; -webkit-box-shadow:4px 4px  
4px 4px #DEC2D0; box-shadow:4px 4px 4px  
4px #DEC2D0 }
```

Background

The CSS property to change the background color of an element to Decimal 14598864 is called "background". The background property can be set on classes, ids or directly on the HTML element.

```
.background, #background, body{  
background:#DEC2D0 }
```

If only the background color should be changed can be used:

```
.background{ background-color:#DEC2D0 }
```

This example shows the color as background, it is applied via the CSS property "background".

To optimize and compress your CSS code, you can use our [online CSS compressor and optimizer](#) based on csstidy. If you want to create a linear or radial gradient as background or border, check our [CSS Gradient Generator](#).

Hey! You found this booklet interesting? Support Converting Colors with the new Membership Option!

The pro membership hides all ads, plus gives you double the colors in the color bucket, and more awesome pro features!

[Learn more, Memberships starting at \\$2.50/m!](#)

**Follow me
on Twitter!**

@ConvertingColor