

Converting Colors

Decimal(14599360)

Have a look what the booklet for
Decimal(14599360) contains.

Decimal(14599360)	3
<i>Conversions</i>	4
<i>Details</i>	6
<i>Harmonies</i>	11
<i>Previews</i>	23
<i>Color Blindness Simulation</i>	26
<i>CSS Examples</i>	29

Color

Decimal(14599360)

Conversions

Conversions Part 1

Format	Color
Hex	DEC4C0
RGB	222, 196, 192
RGB Percent	87%, 77%, 75%
CMY	0.1294, 0.2314, 0.2471
CMYK	0.00, 0.12, 0.14, 0.13
HSL	8°, 31%, 81%
HSV	8°, 14%, 87%
XYZ	59.3786, 58.8152, 58.0921
YIQ	203.3180, 16.7800, 4.2680

Conversions

Conversions Part 2

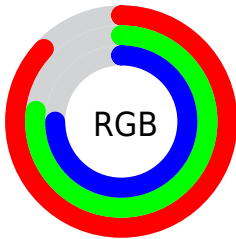
Format	Color
R _{YB}	222, 197, 192
Decimal	14599360
CIE Lab	81.19, 8.51, 5.36
CIE LCh	81, 10.056, 32.191
Yxy	58.8152, 0.3368, 0.3336
Android (android.graphics.Color)	4292789440 (0xFFDEC4C0)
YUV	203.3180, -5.5798, 16.3841
Hunter-Lab	76.6911, 3.9954, 8.7727

Details

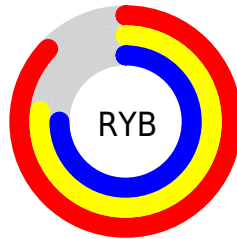
The Decimal color **14599360** is a light color, and the websafe version is hex **CCCCCC**. A complement of this color would be **12638942**, and the grayscale version is **13355979**.

A 20% lighter version of the original color is **16776696**, and **10981003** is the 20% darker color. If you saturate the color by 10%, you get **14594474**, and if you desaturate by 10%, it is **14604246**.

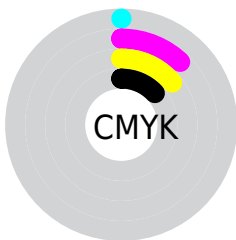
Distribution



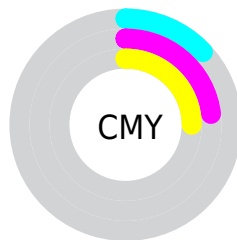
- Red (87%)
- Green (77%)
- Blue (75%)



- Red (87%)
- Yellow (77%)
- Blue (75%)



- Cyan (0%)
- Magenta (12%)
- Yellow (14%)
- Black (13%)



- Cyan (13%)
- Magenta (23%)
- Yellow (25%)

Brightness & Saturation Gradients

These gradients show how the Decimal color 14599360 changes by changing the brightness by 10 percent. The first figure shows a shift by +10% for each color and the second figure -10%.

Similar to the brightness gradients but the following saturation gradients show a change of the Decimal color 14599360 by changing the saturation by 10% instead.

 14599360

 14599360

16777215

 12757413

 16776696

 10981003

 9205105

 7494745

 5915969

 4337195

 2824471

 1507328

 0

 14599360

 14599360

 14594474

 14604246

 14589588

 14609132

 14584445

 14614271

 14579559

 14614527

 14574673

 14569787

 14564645

 14559758

 14556672

Harmonies

Analogous

The Analogous color harmony consists of three colors that are next to each other on the color wheel.



14533577



14599360



14337721

Triad

The Triadic color harmony groups three colors that are evenly spaced from another and form a triangle on the color wheel.



14599360



12373697



12700380

Complementary

The Complementary color scheme is a pair of colors which are on the opposite of each other on the color wheel.



14599360



12638942

Split Complementary

Split-complementary colors differ from the complementary color scheme. The scheme consists of three colors, the original color and two neighbors of the complement color.



12045786



14599360



11849674

Square

The Square scheme is like the rectangle color scheme, but the four colors are evenly spaced on the color wheel.



14599360



13028538



11784147



13486042

Rectangle

The Rectangle color scheme consists of four colors that form a rectangle on the color wheel.



14599360



13945015



11784147



12438492

Sweetspot

The Sweet Spot groups the original color and five complimentary colors.



14599360



16774901



14598362



8419961



0



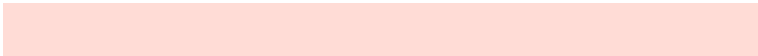
8421504

Same Dimension

The Same Dimension uses a secret algorithm to generate beautiful new colors.



14599360



16768214



14603200



7366245



11540224



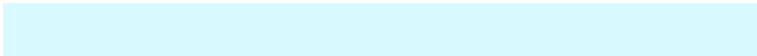
3147264

Inverse Universe

The Inverse Universe completely reimagines the original color for something new.



12638942



14088959



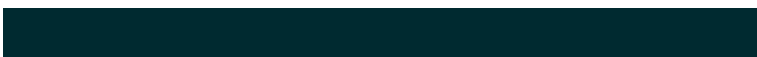
12635102



6647664



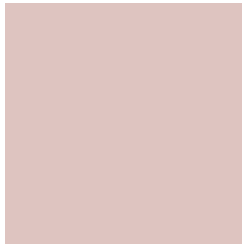
39088



10800

Previews

White Background



This preview shows how the Decimal color 14599360 looks on a white background.

Color Contrast Check

Large Text (above 18pt) WCAG AA × Fail

Any Text WCAG AA × Fail

Large Text (above 18pt) WCAG AAA × Fail

Any Text WCAG AAA × Fail

Black Background



This preview shows how the Decimal color 14599360 looks on a black background.

Color Contrast Check

Large Text (above 18pt) WCAG AA ✓ Pass

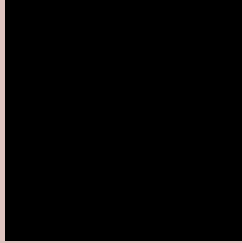
Any Text WCAG AA ✓ Pass

Large Text (above 18pt) WCAG AAA ✓ Pass

Any Text WCAG AAA ✓ Pass

If you want to check with other color combinations, try the [Color Contrast Checker](#).

Decimal 14599360 Background



This preview shows how black text looks on a background with the Decimal color 14599360.



This preview shows how white text looks on a background with the Decimal color 14599360.

Color Blindness Simulation

Color vision deficiency is a very complex topic, and I could not describe the different causes any better than Wikipedia does, so if you want to learn more, you should check out their [article about color blindness](#).

Dichromacy



Original Color
14599360

Protanopia
13617603

Deuteranopia
14795712



Tritanopia
14729681

Trichromacy



Original Color
14599360

Protanomaly
13944770

Deuteranomaly
14730176

Tritanomaly
14664395

Monochromacy



Original Color
14599360

Achromatopsia
13355979

Achromatomaly
13813959

CSS Examples

Text

The CSS property to change the color of the text to Decimal 14599360 is called "color". The color property can be set on classes, ids or directly on the HTML element.

This example shows how text in the color #DEC4C0 looks like.

```
.text, #text, p{  
    color:#DEC4C0  
}
```

If you want to add a text shadow in that color use the text-shadow property, you can generate a text shadow directly with our [CSS Text Shadow Generator](#).

Here you see how black text with a 4 pixel #DEC4C0 colored shadow looks like.

```
.shadow{ text-shadow: 4px 4px 2px #DEC4C0
}
```

Border

The CSS property to change the border of an element to Decimal 14599360 is called "border". The border property can be set on classes, ids or directly on the HTML element.

This example shows the color as border, it can be applied via the CSS property "border" or "border-color".

```
.border, #border, table{ border:4px solid
#DEC4C0 }
```

If only the border color should be changed use the property `border-color`.

```
.border{ border-color:#DEC4C0 }
```

If you want to add a box shadow in that color use:

Here you see how a box with a 4 pixel #DEC4C0 colored shadow looks like.

```
.boxshadow{ -moz-box-shadow:4px 4px 4px  
4px #DEC4C0; -webkit-box-shadow:4px 4px  
4px 4px #DEC4C0; box-shadow:4px 4px 4px  
4px #DEC4C0 }
```

Background

The CSS property to change the background color of an element to Decimal 14599360 is called "background". The background property can be set on classes, ids or directly on the HTML element.

```
.background, #background, body{  
background:#DEC4C0 }
```

If only the background color should be changed can be used:

```
.background{ background-color:#DEC4C0 }
```

This example shows the color as background, it is applied via the CSS property "background".

To optimize and compress your CSS code, you can use our [online CSS compressor and optimizer](#) based on csstidy. If you want to create a linear or radial gradient as background or border, check our [CSS Gradient Generator](#).

Hey! You found this booklet interesting? Support Converting Colors with the new Membership Option!

The pro membership hides all ads, plus gives you double the colors in the color bucket, and more awesome pro features!

[Learn more, Memberships starting at \\$2.50/m!](#)

**Follow me
on Twitter!**

@ConvertingColor