

Converting Colors

Decimal(14600150)

Have a look what the booklet for
Decimal(14600150) contains.

Decimal(14600150)	3
<i>Conversions</i>	4
<i>Details</i>	6
<i>Harmonies</i>	11
<i>Previews</i>	23
<i>Color Blindness Simulation</i>	26
<i>CSS Examples</i>	29

Color

Decimal(14600150)

Conversions

Conversions Part 1

Format	Color
Hex	DEC7D6
RGB	222, 199, 214
RGB Percent	87%, 78%, 84%
CMY	0.1294, 0.2196, 0.1608
CMYK	0.00, 0.10, 0.04, 0.13
HSL	321°, 26%, 83%
HSV	321°, 10%, 87%
XYZ	62.6852, 61.2315, 72.1333
YIQ	207.5870, 8.8930, 9.5410

Conversions

Conversions Part 2

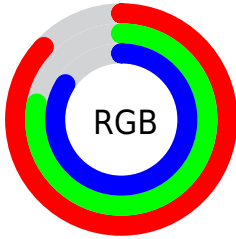
Format	Color
R _{YB}	222, 199, 214
Decimal	14600150
CIE Lab	82.50, 10.64, -4.52
CIE LCh	83, 11.560, 336.999
Yxy	61.2315, 0.3197, 0.3123
Android (android.graphics.Color)	4292790230 (0xFFDEC7D6)
YUV	207.5870, 3.1616, 12.6402
Hunter-Lab	78.2505, 6.0549, 0.1204

Details

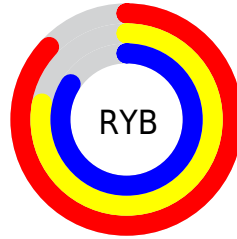
The Decimal color **14600150** is a light color, and the websafe version is hex **CCCCCC**. A complement of this color would be **13098703**, and the grayscale version is **13684944**.

A 20% lighter version of the original color is **16777215**, and **10981791** is the 20% darker color. If you saturate the color by 10%, you get **14594510**, and if you desaturate by 10%, it is **14605790**.

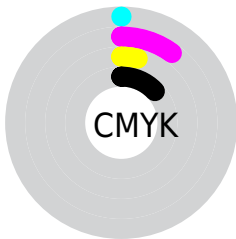
Distribution



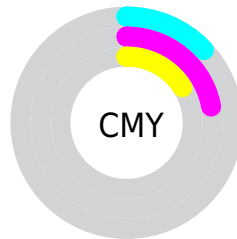
- Red (87%)
- Green (78%)
- Blue (84%)



- Red (87%)
- Yellow (78%)
- Blue (84%)



- Cyan (0%)
- Magenta (10%)
- Yellow (4%)
- Black (13%)



- Cyan (13%)
- Magenta (22%)
- Yellow (16%)

Brightness & Saturation Gradients

These gradients show how the Decimal color 14600150 changes by changing the brightness by 10 percent. The first figure shows a shift by +10% for each color and the second figure -10%.

Similar to the brightness gradients but the following saturation gradients show a change of the Decimal color 14600150 by changing the saturation by 10% instead.

■ 14600150

■ 14600150

16777215

■ 12758202

■ 10981791

■ 9205637

■ 7561068

■ 5916500

■ 4403261

■ 2890535

■ 1638674

■ 0

 14600150

 14600150

 14594510

 14605790

 14588871

 14611429

 14582975

 14614509

 14577335

 14614517

 14571695

 14614525

 14566056

 14614527

 14560416

 14554520

 14549137

Harmonies

Analogous

The Analogous color harmony consists of three colors that are next to each other on the color wheel.



13880031



14600150



14993099

Triad

The Triadic color harmony groups three colors that are evenly spaced from another and form a triangle on the color wheel.



14600150



13946296



11785178

Complementary

The Complementary color scheme is a pair of colors which are on the opposite of each other on the color wheel.



14600150



13098703

Split Complementary

Split-complementary colors differ from the complementary color scheme. The scheme consists of three colors, the original color and two neighbors of the complement color.



11850959



14600150



13095356

Square

The Square scheme is like the rectangle color scheme, but the four colors are evenly spaced on the color wheel.



14600150



14600890



12309444



12177889

Rectangle

The Rectangle color scheme consists of four colors that form a rectangle on the color wheel.



14600150



15058628



12309444



11719895

Sweetspot

The Sweet Spot groups the original color and five complimentary colors.



14600150



16775164



13617118



8419966



0



8421504

Same Dimension

The Same Dimension uses a secret algorithm to generate beautiful new colors.



14600150



16769268



14600139



7365996



11534451



3145760

Inverse Universe

The Inverse Universe completely reimagines the original color for something new.



14600150



16769268



13098714



7365996



11534451



3145760

Previews

White Background



This preview shows how the Decimal color 14600150 looks on a white background.

Color Contrast Check

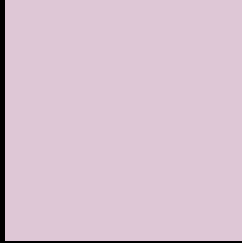
Large Text (above 18pt) WCAG AA × Fail

Any Text WCAG AA × Fail

Large Text (above 18pt) WCAG AAA × Fail

Any Text WCAG AAA × Fail

Black Background



This preview shows how the Decimal color 14600150 looks on a black background.

Color Contrast Check

Large Text (above 18pt) WCAG AA ✓ Pass

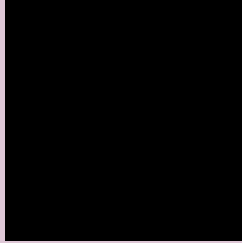
Any Text WCAG AA ✓ Pass

Large Text (above 18pt) WCAG AAA ✓ Pass

Any Text WCAG AAA ✓ Pass

If you want to check with other color combinations, try the [Color Contrast Checker](#).

Decimal 14600150 Background



This preview shows how black text looks on a background with the Decimal color 14600150.

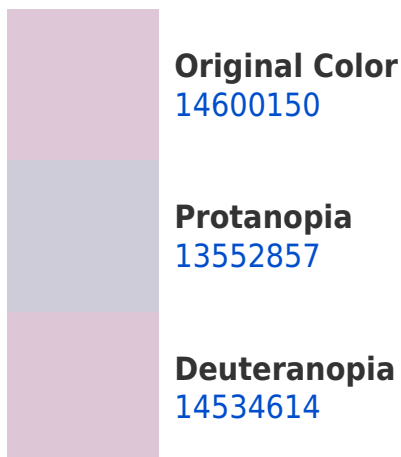



This preview shows how white text looks on a background with the Decimal color 14600150.

Color Blindness Simulation

Color vision deficiency is a very complex topic, and I could not describe the different causes any better than Wikipedia does, so if you want to learn more, you should check out their [article about color blindness](#).

Dichromacy





Tritanopia
14600151

Trichromacy



Original Color
14600150

Protanomaly
13945560

Deuteranomaly
14534614

Tritanomaly
14600151

Monochromacy



Original Color
14600150

Achromatopsia
13684944

Achromatomaly
14011858

CSS Examples

Text

The CSS property to change the color of the text to Decimal 14600150 is called "color". The color property can be set on classes, ids or directly on the HTML element.

This example shows how text in the color #DEC7D6 looks like.

```
.text, #text, p{  
    color:#DEC7D6  
}
```

If you want to add a text shadow in that color use the text-shadow property, you can generate a text shadow directly with our [CSS Text Shadow Generator](#).

Here you see how black text with a 4 pixel #DEC7D6 colored shadow looks like.

```
.shadow{ text-shadow: 4px 4px 2px #DEC7D6  
}
```

Border

The CSS property to change the border of an element to Decimal 14600150 is called "border". The border property can be set on classes, ids or directly on the HTML element.

This example shows the color as border, it can be applied via the CSS property "border" or "border-color".

```
.border, #border, table{ border:4px solid  
#DEC7D6 }
```

If only the border color should be changed use the property `border-color`.

```
.border{ border-color:#DEC7D6 }
```

If you want to add a box shadow in that color use:

Here you see how a box with a 4 pixel #DEC7D6 colored shadow looks like.

```
.boxshadow{ -moz-box-shadow:4px 4px 4px  
4px #DEC7D6; -webkit-box-shadow:4px 4px  
4px 4px #DEC7D6; box-shadow:4px 4px 4px  
4px #DEC7D6 }
```

Background

The CSS property to change the background color of an element to Decimal 14600150 is called "background". The background property can be set on classes, ids or directly on the HTML element.

```
.background, #background, body{  
background:#DEC7D6 }
```

If only the background color should be changed can be used:

```
.background{ background-color:#DEC7D6 }
```

This example shows the color as background, it is applied via the CSS property "background".

To optimize and compress your CSS code, you can use our [online CSS compressor and optimizer](#) based on csstidy. If you want to create a linear or radial gradient as background or border, check our [CSS Gradient Generator](#).

Hey! You found this booklet interesting? Support Converting Colors with the new Membership Option!

The pro membership hides all ads, plus gives you double the colors in the color bucket, and more awesome pro features!

[Learn more, Memberships starting at \\$2.50/m!](#)

**Follow me
on Twitter!**

@ConvertingColor