

# Converting Colors

Decimal(14600387)

Have a look what the booklet for  
Decimal(14600387) contains.

<b>Decimal(14600387)</b> .....	3
<i><b>Conversions</b></i> .....	4
<i><b>Details</b></i> .....	6
<i><b>Harmonies</b></i> .....	11
<i><b>Previews</b></i> .....	23
<i><b>Color Blindness Simulation</b></i> .....	26
<i><b>CSS Examples</b></i> .....	29

# **Color**

**Decimal(14600387)**

# Conversions

## Conversions Part 1

Format	Color
Hex	DEC8C3
RGB	222, 200, 195
RGB Percent	87%, 78%, 76%
CMY	0.1294, 0.2157, 0.2353
CMYK	0.00, 0.10, 0.12, 0.13
HSL	11°, 29%, 82%
HSV	11°, 12%, 87%
XYZ	60.6288, 60.7783, 60.1657
YIQ	206.0080, 14.7170, 3.1090

# Conversions

## Conversions Part 2

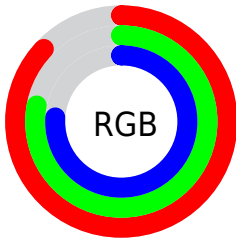
<b>Format</b>	<b>Color</b>
<b>R<sub>YB</sub></b>	222, 201, 195
Decimal	14600387
CIE <sub>Lab</sub>	82.26, 6.88, 5.29
CIE <sub>LCh</sub>	82, 8.680, 37.578
Yxy	60.7783, 0.3339, 0.3347
Android (android.graphics.Color)	4292790467 (0xFFDEC8C3)
YUV	206.0080, -5.4269, 14.0250
Hunter-Lab	77.9604, 2.3864, 8.8155

# Details

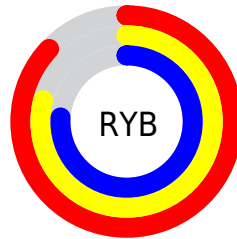
The Decimal color **14600387** is a light color, and the websafe version is hex **CCCCCC**. A complement of this color would be **12835294**, and the grayscale version is **13553358**.

A 20% lighter version of the original color is **16777212**, and **10982029** is the 20% darker color. If you saturate the color by 10%, you get **14595757**, and if you desaturate by 10%, it is **14605017**.

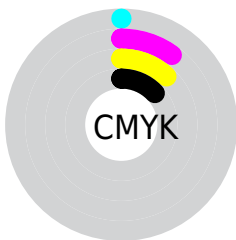
# Distribution



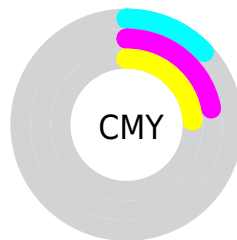
- Red (87%)
- Green (78%)
- Blue (76%)



- Red (87%)
- Yellow (79%)
- Blue (76%)



- Cyan (0%)
- Magenta (10%)
- Yellow (12%)
- Black (13%)



- Cyan (13%)
- Magenta (22%)
- Yellow (24%)

# Brightness & Saturation Gradients

These gradients show how the Decimal color 14600387 changes by changing the brightness by 10 percent. The first figure shows a shift by +10% for each color and the second figure -10%.

Similar to the brightness gradients but the following saturation gradients show a change of the Decimal color 14600387 by changing the saturation by 10% instead.



 14600387	 14600387
16777215	 12758440
16777212	 10982029
	 9205876
	 7561307
	 5916740
	 4337966
	 2890777
	 1573632
	 0

 14600387

 14600387

 14595757

 14605017

 14591127

 14609647

 14586496

 14614271

 14581866

 14614527

 14577236

 14572350

 14567720

 14563089

 14559488

# Harmonies

## Analogous

The Analogous color harmony consists of three colors that are next to each other on the color wheel.



14600139



14600387



14273214

# Triad

The Triadic color harmony groups three colors that are evenly spaced from another and form a triangle on the color wheel.



14600387



12571078



13094365

# Complementary

The Complementary color scheme is a pair of colors which are on the opposite of each other on the color wheel.



14600387



12835294

# Split Complementary

Split-complementary colors differ from the complementary color scheme. The scheme consists of three colors, the original color and two neighbors of the complement color.



12505051



14600387



12243662

# Square

The Square scheme is like the rectangle color scheme, but the four colors are evenly spaced on the color wheel.



14600387



13160384



12177878



13748954

# Rectangle

The Rectangle color scheme consists of four colors that form a rectangle on the color wheel.



14600387



13946044



12177878



12897757



# Sweetspot

The Sweet Spot groups the original color and five complimentary colors.



14600387



16775157



14599129



8419961



0



8421504

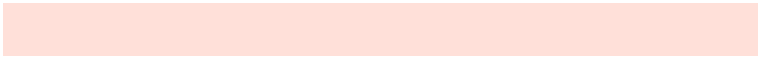


# Same Dimension

The Same Dimension uses a secret algorithm to generate beautiful new colors.



14600387



16769241



14603715



7366501



11542784



3148032

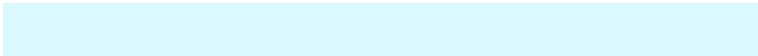


# Inverse Universe

The Inverse Universe completely reimagines the original color for something new.



12835294



14285055



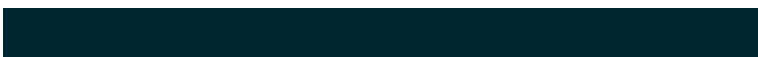
12831966



6647408



36784

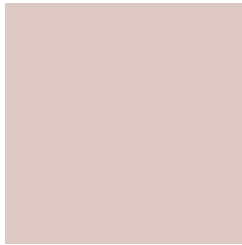


10032



# Previews

## White Background



This preview shows how the Decimal color 14600387 looks on a white background.

## Color Contrast Check

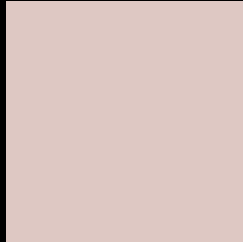
Large Text (above 18pt) WCAG AA × Fail

Any Text WCAG AA × Fail

Large Text (above 18pt) WCAG AAA × Fail

Any Text WCAG AAA × Fail

# Black Background



This preview shows how the Decimal color 14600387 looks on a black background.

## Color Contrast Check

Large Text (above 18pt) WCAG AA ✓ Pass

Any Text WCAG AA ✓ Pass

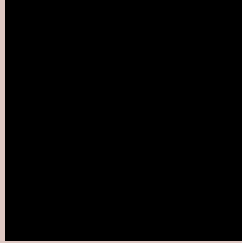
Large Text (above 18pt) WCAG AAA ✓ Pass

Any Text WCAG AAA ✓ Pass

If you want to check with other color combinations, try the [Color Contrast Checker](#).



## Decimal 14600387 Background



This preview shows how black text looks on a background with the Decimal color 14600387.



This preview shows how white text looks on a background with the Decimal color 14600387.

# Color Blindness Simulation

Color vision deficiency is a very complex topic, and I could not describe the different causes any better than Wikipedia does, so if you want to learn more, you should check out their [article about color blindness](#).

## Dichromacy





**Tritanopia**  
14730709

# Trichromacy



**Original Color**  
14600387

**Protanomaly**  
14076868

**Deuteranomaly**  
14862275

**Tritanomaly**  
14665422

# Monochromacy



**Original Color**  
14600387

**Achromatopsia**  
13553358

**Achromatomaly**  
13946058

# CSS Examples

## Text

The CSS property to change the color of the text to Decimal 14600387 is called "color". The color property can be set on classes, ids or directly on the HTML element.

This example shows how text in the color #DEC8C3 looks like.

```
.text, #text, p{  
    color:#DEC8C3  
}
```

If you want to add a text shadow in that color use the text-shadow property, you can generate a text shadow directly with our [CSS Text Shadow Generator](#).

Here you see how black text with a 4 pixel #DEC8C3 colored shadow looks like.

```
.shadow{ text-shadow: 4px 4px 2px #DEC8C3
}
```

## Border

The CSS property to change the border of an element to Decimal 14600387 is called "border". The border property can be set on classes, ids or directly on the HTML element.

This example shows the color as border, it can be applied via the CSS property "border" or "border-color".

```
.border, #border, table{ border:4px solid
#DEC8C3 }
```

If only the border color should be changed use the property `border-color`.

```
.border{ border-color:#DEC8C3 }
```

If you want to add a box shadow in that color use:

Here you see how a box with a 4 pixel #DEC8C3 colored shadow looks like.

```
.boxshadow{ -moz-box-shadow:4px 4px 4px  
4px #DEC8C3; -webkit-box-shadow:4px 4px  
4px 4px #DEC8C3; box-shadow:4px 4px 4px  
4px #DEC8C3 }
```

# Background

The CSS property to change the background color of an element to Decimal 14600387 is called "background". The background property can be set on classes, ids or directly on the HTML element.

```
.background, #background, body{  
background:#DEC8C3 }
```

If only the background color should be changed can be used:

```
.background{ background-color:#DEC8C3 }
```

This example shows the color as background, it is applied via the CSS property "background".

To optimize and compress your CSS code, you can use our [online CSS compressor and optimizer](#) based on csstidy. If you want to create a linear or radial gradient as background or border, check our [CSS Gradient Generator](#).



Hey! You found this booklet interesting? Support Converting Colors with the new Membership Option!

The pro membership hides all ads, plus gives you double the colors in the color bucket, and more awesome pro features!

**[Learn more, Memberships starting at \\$2.50/m!](#)**

**Follow me  
on Twitter!**

@ConvertingColor