

Converting Colors

Decimal(14601665)

Have a look what the booklet for
Decimal(14601665) contains.

Decimal(14601665)	3
<i>Conversions</i>	4
<i>Details</i>	6
<i>Harmonies</i>	11
<i>Previews</i>	23
<i>Color Blindness Simulation</i>	26
<i>CSS Examples</i>	29

Color

Decimal(14601665)

Conversions

Conversions Part 1

Format	Color
Hex	DEDCD1
RGB	222, 205, 193
RGB Percent	87%, 80%, 76%
CMY	0.1294, 0.1961, 0.2431
CMYK	0.00, 0.08, 0.13, 0.13
HSL	25°, 31%, 81%
HSV	25°, 13%, 87%
XYZ	61.5812, 63.0425, 59.3748
YIQ	208.7150, 13.9840, -0.1280

Conversions

Conversions Part 2

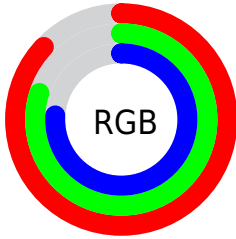
Format	Color
R _Y B	222, 213, 193
Decimal	14601665
CIE Lab	83.46, 3.93, 8.09
CIE LCh	83, 8.996, 64.125
Yxy	63.0425, 0.3347, 0.3426
Android (android.graphics.Color)	4292791745 (0xFFDEDCD1)
YUV	208.7150, -7.7475, 11.6509
Hunter-Lab	79.3993, -0.5063, 11.2424

Details

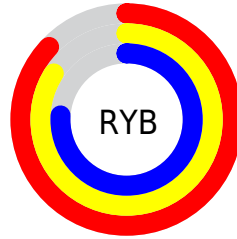
The Decimal color **14601665** is a light color, and the websafe version is hex **CCCCCC**. A complement of this color would be **12702430**, and the grayscale version is **13750737**.

A 20% lighter version of the original color is **16777209**, and **10983308** is the 20% darker color. If you saturate the color by 10%, you get **14598315**, and if you desaturate by 10%, it is **14605015**.

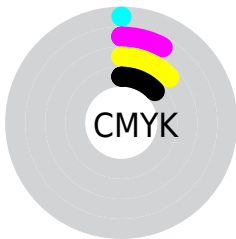
Distribution



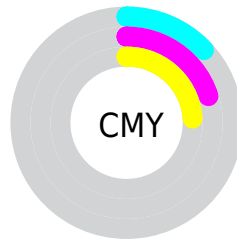
- Red (87%)
- Green (80%)
- Blue (76%)



- Red (87%)
- Yellow (84%)
- Blue (76%)



- Cyan (0%)
- Magenta (8%)
- Yellow (13%)
- Black (13%)



- Cyan (13%)
- Magenta (20%)
- Yellow (24%)

Brightness & Saturation Gradients

These gradients show how the Decimal color 14601665 changes by changing the brightness by 10 percent. The first figure shows a shift by +10% for each color and the second figure -10%.

Similar to the brightness gradients but the following saturation gradients show a change of the Decimal color 14601665 by changing the saturation by 10% instead.

■ 14601665

■ 14601665

16777215

■ 12759718

■ 16777209

■ 10983308

■ 9207154

■ 7562330

■ 5917762

■ 4339244

■ 2891799

■ 1575168

■ 0

 14601665

 14601665

 14598315

 14605015

 14594965

 14608365

 14591614

 14611711

 14588264

 14614527

 14584914

 14581564

 14578214

 14574863

 14572544

Harmonies

Analogous

The Analogous color harmony consists of three colors that are next to each other on the color wheel.



14863303



14601665



14078143

Triad

The Triadic color harmony groups three colors that are evenly spaced from another and form a triangle on the color wheel.



14601665



12441041



13880798

Complementary

The Complementary color scheme is a pair of colors which are on the opposite of each other on the color wheel.



14601665



12702430

Split Complementary

Split-complementary colors differ from the complementary color scheme. The scheme consists of three colors, the original color and two neighbors of the complement color.



13226209



14601665



12309977

Square

The Square scheme is like the rectangle color scheme, but the four colors are evenly spaced on the color wheel.



14601665



12833992



12637151



14470104

Rectangle

The Rectangle color scheme consists of four colors that form a rectangle on the color wheel.



14601665



13685440



12637151



13684447

Sweetspot

The Sweet Spot groups the original color and five complimentary colors.



14601665



16775669



14598610



8420473



0



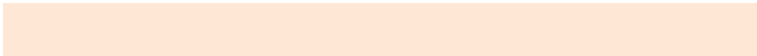
8421504

Same Dimension

The Same Dimension uses a secret algorithm to generate beautiful new colors.



14601665



16771030



14605249



7367269



11553024



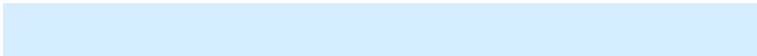
3150848

Inverse Universe

The Inverse Universe completely reimagines the original color for something new.



12702430



14085887



12698846



6646896



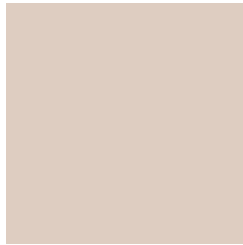
26544



7216

Previews

White Background



This preview shows how the Decimal color 14601665 looks on a white background.

Color Contrast Check

Large Text (above 18pt) WCAG AA × Fail

Any Text WCAG AA × Fail

Large Text (above 18pt) WCAG AAA × Fail

Any Text WCAG AAA × Fail

Black Background



This preview shows how the Decimal color 14601665 looks on a black background.

Color Contrast Check

Large Text (above 18pt) WCAG AA ✓ Pass

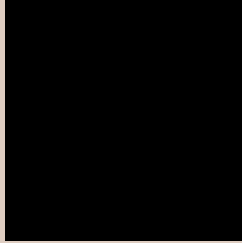
Any Text WCAG AA ✓ Pass

Large Text (above 18pt) WCAG AAA ✓ Pass

Any Text WCAG AAA ✓ Pass

If you want to check with other color combinations, try the [Color Contrast Checker](#).

Decimal 14601665 Background



This preview shows how black text looks on a background with the Decimal color 14601665.

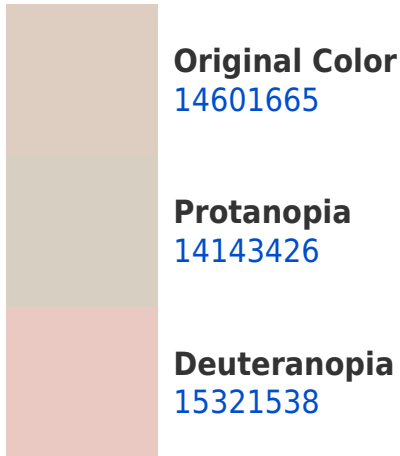


This preview shows how white text looks on a background with the Decimal color 14601665.

Color Blindness Simulation

Color vision deficiency is a very complex topic, and I could not describe the different causes any better than Wikipedia does, so if you want to learn more, you should check out their [article about color blindness](#).

Dichromacy





Tritanopia
14797273

Trichromacy



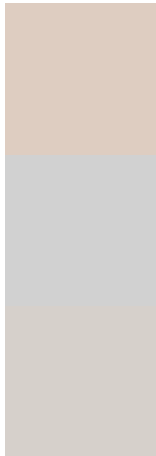
Original Color
14601665

Protanomaly
14339778

Deuteranomaly
15059650

Tritanomaly
14731984

Monochromacy



Original Color
14601665

Achromatopsia
13750737

Achromatomaly
14078155

CSS Examples

Text

The CSS property to change the color of the text to Decimal 14601665 is called "color". The color property can be set on classes, ids or directly on the HTML element.

This example shows how text in the color #DECDC1 looks like.

```
.text, #text, p{  
  color:#DECDC1  
}
```

If you want to add a text shadow in that color use the text-shadow property, you can generate a text shadow directly with our [CSS Text Shadow Generator](#).

Here you see how black text with a 4 pixel #DECDC1 colored shadow looks like.

```
.shadow{ text-shadow: 4px 4px 2px #DECDC1
}
```

Border

The CSS property to change the border of an element to Decimal 14601665 is called "border". The border property can be set on classes, ids or directly on the HTML element.

This example shows the color as border, it can be applied via the CSS property "border" or "border-color".

```
.border, #border, table{ border:4px solid
#DECDC1 }
```

If only the border color should be changed use the property `border-color`.

```
.border{ border-color:#DECDC1 }
```

If you want to add a box shadow in that color use:

Here you see how a box with a 4 pixel #DECDC1 colored shadow looks like.

```
.boxshadow{ -moz-box-shadow:4px 4px 4px  
4px #DECDC1; -webkit-box-shadow:4px 4px  
4px 4px #DECDC1; box-shadow:4px 4px 4px  
4px #DECDC1 }
```

Background

The CSS property to change the background color of an element to Decimal 14601665 is called "background". The background property can be set on classes, ids or directly on the HTML element.

```
.background, #background, body{  
background:#DECDC1 }
```

If only the background color should be changed can be used:

```
.background{ background-color:#DECDC1 }
```

This example shows the color as background, it is applied via the CSS property "background".

To optimize and compress your CSS code, you can use our [online CSS compressor and optimizer](#) based on csstidy. If you want to create a linear or radial gradient as background or border, check our [CSS Gradient Generator](#).

Hey! You found this booklet interesting? Support Converting Colors with the new Membership Option!

The pro membership hides all ads, plus gives you double the colors in the color bucket, and more awesome pro features!

[Learn more, Memberships starting at \\$2.50/m!](#)

**Follow me
on Twitter!**

@ConvertingColor