

# Converting Colors

Decimal(14601929)

Have a look what the booklet for  
Decimal(14601929) contains.

<b>Decimal(14601929)</b> .....	3
<i><b>Conversions</b></i> .....	4
<i><b>Details</b></i> .....	6
<i><b>Harmonies</b></i> .....	11
<i><b>Previews</b></i> .....	23
<i><b>Color Blindness Simulation</b></i> .....	26
<i><b>CSS Examples</b></i> .....	29

# **Color**

**Decimal(14601929)**

# Conversions

## Conversions Part 1

Format	Color
Hex	DECEC9
RGB	222, 206, 201
RGB Percent	87%, 81%, 79%
CMY	0.1294, 0.1922, 0.2118
CMYK	0.00, 0.07, 0.09, 0.13
HSL	14°, 24%, 83%
HSV	14°, 9%, 87%
XYZ	62.7381, 63.8893, 64.2835
YIQ	210.2140, 11.1410, 1.8370

# Conversions

## Conversions Part 2

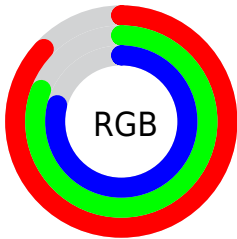
Format	Color
<a href="#">RYB</a>	<a href="#">222, 208, 201</a>
Decimal	<a href="#">14601929</a>
CIELab	<a href="#">83.91, 4.71, 4.47</a>
CIELCh	<a href="#">84, 6.495, 43.544</a>
Yxy	<a href="#">63.8893, 0.3286, 0.3347</a>
Android (android.graphics.Color)	<a href="#">4292792009</a> ( <a href="#">0xFFDECEC9</a> )
YUV	<a href="#">210.2140, -4.5425, 10.3363</a>
Hunter-Lab	<a href="#">79.9308, 0.2269, 8.2681</a>

# Details

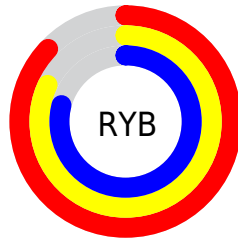
The Decimal color **14601929** is a light color, and the websafe version is hex **CCCCCC**. A complement of this color would be **13228510**, and the grayscale version is **13816530**.

A 20% lighter version of the original color is **16777215**, and **10983571** is the 20% darker color. If you saturate the color by 10%, you get **14597555**, and if you desaturate by 10%, it is **14606303**.

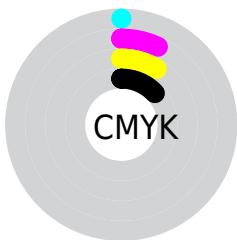
# Distribution



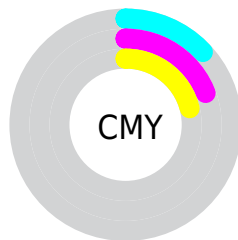
- Red (87%)
- Green (81%)
- Blue (79%)



- Red (87%)
- Yellow (82%)
- Blue (79%)



- Cyan (0%)
- Magenta (7%)
- Yellow (9%)
- Black (13%)



- Cyan (13%)
- Magenta (19%)
- Yellow (21%)

# Brightness & Saturation Gradients

These gradients show how the Decimal color 14601929 changes by changing the brightness by 10 percent. The first figure shows a shift by +10% for each color and the second figure -10%.

Similar to the brightness gradients but the following saturation gradients show a change of the Decimal color 14601929 by changing the saturation by 10% instead.



■ 14601929

16777215

■ 14601929

■ 12759982

■ 10983571

■ 9207417

■ 7562593

■ 5918025

■ 4404786

■ 2892061

■ 1640964

■ 0

 14601929

 14601929

 14597555

 14606303

 14593181

 14610677

 14588806

 14614527

 14584432

 14580058

 14575940

 14571566

 14567191

 14562817

# Harmonies

## Analogous

The Analogous color harmony consists of three colors that are next to each other on the color wheel.



14667215



14601929



14340294

# Triad

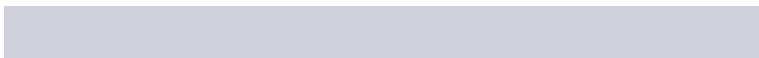
The Triadic color harmony groups three colors that are evenly spaced from another and form a triangle on the color wheel.



14601929



13030862



13554141

# Complementary

The Complementary color scheme is a pair of colors which are on the opposite of each other on the color wheel.



14601929



13228510

# Split Complementary

Split-complementary colors differ from the complementary color scheme. The scheme consists of three colors, the original color and two neighbors of the complement color.



13161437



14601929



12834260

# Square

The Square scheme is like the rectangle color scheme, but the four colors are evenly spaced on the color wheel.



14601929



13423560



12834009



14077914

# Rectangle

The Rectangle color scheme consists of four colors that form a rectangle on the color wheel.



14601929



14078405



12834009



13423069



# Sweetspot

The Sweet Spot groups the original color and five complimentary colors.



14601929



16775671



14600665



8420474



0



8421504

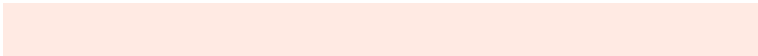


# Same Dimension

The Same Dimension uses a secret algorithm to generate beautiful new colors.



14601929



16771811



14604489



7366757



11545088



3148800

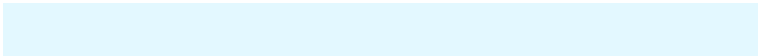


# Inverse Universe

The Inverse Universe completely reimagines the original color for something new.



13228510



14940415



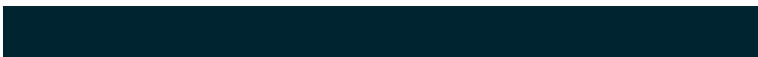
13225950



6647408



34480

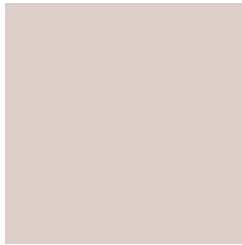


9520



# Previews

## White Background



This preview shows how the Decimal color 14601929 looks on a white background.

## Color Contrast Check

Large Text (above 18pt) WCAG AA × Fail

Any Text WCAG AA × Fail

Large Text (above 18pt) WCAG AAA × Fail

Any Text WCAG AAA × Fail

# Black Background



This preview shows how the Decimal color 14601929 looks on a black background.

## Color Contrast Check

Large Text (above 18pt) WCAG AA ✓ Pass

Any Text WCAG AA ✓ Pass

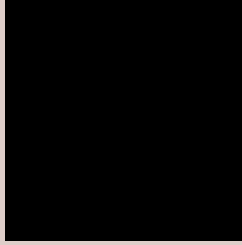
Large Text (above 18pt) WCAG AAA ✓ Pass

Any Text WCAG AAA ✓ Pass

If you want to check with other color combinations, try the [Color Contrast Checker](#).



## Decimal 14601929 Background



This preview shows how black text looks on a background with the Decimal color 14601929.



This preview shows how white text looks on a background with the Decimal color 14601929.

# Color Blindness Simulation

Color vision deficiency is a very complex topic, and I could not describe the different causes any better than Wikipedia does, so if you want to learn more, you should check out their [article about color blindness](#).

## Dichromacy





**Tritanopia**  
14797787

# Trichromacy



**Original Color**  
14601929

**Protanomaly**  
14340042

**Deuteranomaly**  
14994378

**Tritanomaly**  
14732500

# Monochromacy



**Original Color**  
14601929

**Achromatopsia**  
13816530

**Achromatomaly**  
14078415

# CSS Examples

## Text

The CSS property to change the color of the text to Decimal 14601929 is called "color". The color property can be set on classes, ids or directly on the HTML element.

This example shows how text in the color #DECEC9 looks like.

```
.text, #text, p{  
    color:#DECEC9  
}
```

If you want to add a text shadow in that color use the text-shadow property, you can generate a text shadow directly with our [CSS Text Shadow Generator](#).

Here you see how black text with a 4 pixel #DECEC9 colored shadow looks like.

```
.shadow{ text-shadow: 4px 4px 2px #DECEC9
}
```

## Border

The CSS property to change the border of an element to Decimal 14601929 is called "border". The border property can be set on classes, ids or directly on the HTML element.

This example shows the color as border, it can be applied via the CSS property "border" or "border-color".

```
.border, #border, table{ border:4px solid
#DECEC9 }
```

If only the border color should be changed use the property border-color.

```
.border{ border-color:#DECEC9 }
```

If you want to add a box shadow in that color use:

Here you see how a box with a 4 pixel #DECEC9 colored shadow looks like.

```
.boxshadow{ -moz-box-shadow:4px 4px 4px  
4px #DECEC9; -webkit-box-shadow:4px 4px  
4px 4px #DECEC9; box-shadow:4px 4px 4px  
4px #DECEC9 }
```

# Background

The CSS property to change the background color of an element to Decimal 14601929 is called "background". The background property can be set on classes, ids or directly on the HTML element.

```
.background, #background, body{  
background:#DECEC9 }
```

If only the background color should be changed can be used:

```
.background{ background-color:#DECEC9 }
```

This example shows the color as background, it is applied via the CSS property "background".

To optimize and compress your CSS code, you can use our [online CSS compressor and optimizer](#) based on csstidy. If you want to create a linear or radial gradient as background or border, check our [CSS Gradient Generator](#).



Hey! You found this booklet interesting? Support Converting Colors with the new Membership Option!

The pro membership hides all ads, plus gives you double the colors in the color bucket, and more awesome pro features!

**[Learn more, Memberships starting at \\$2.50/m!](#)**

**Follow me  
on Twitter!**

@ConvertingColor