

# Converting Colors

Decimal(14625110)

Have a look what the booklet for  
Decimal(14625110) contains.

<b>Decimal(14625110)</b> .....	3
<i><b>Conversions</b></i> .....	4
<i><b>Details</b></i> .....	6
<i><b>Harmonies</b></i> .....	11
<i><b>Previews</b></i> .....	23
<i><b>Color Blindness Simulation</b></i> .....	26
<i><b>CSS Examples</b></i> .....	29

# Color

**Decimal(14625110)**

# Conversions

## Conversions Part 1

<b>Format</b>	<b>Color</b>
Hex	DF2956
RGB	223, 41, 86
RGB Percent	87%, 16%, 34%
CMY	0.1255, 0.8392, 0.6627
CMYK	0.00, 0.82, 0.61, 0.13
HSL	345°, 74%, 52%
HSV	345°, 82%, 87%
XYZ	32.9041, 17.9457, 10.5337
YIQ	100.5480, 94.0270, 52.5790

# Conversions

## Conversions Part 2

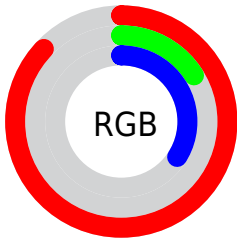
<b>Format</b>	<b>Color</b>
<b>R<sub>YB</sub></b>	223, 41, 86
Decimal	14625110
CIE <sub>Lab</sub>	49.43, 69.05, 21.00
CIE <sub>LCh</sub>	49, 72.176, 16.913
Yxy	17.9457, 0.5360, 0.2924
Android (android.graphics.Color)	4292815190 (0xFFDF2956)
YUV	100.5480, -7.1722, 107.3904
Hunter-Lab	42.3624, 64.5118, 14.9108

# Details

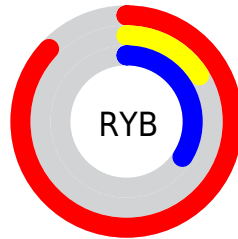
The Decimal color **14625110** is a dark color, and the websafe version is hex **FF3366**. The color can be described as dark washed red. A complement of this color would be **2744242**, and the grayscale version is **6645093**.

A 20% lighter version of the original color is **16738951**, and **10485802** is the 20% darker color. If you saturate the color by 10%, you get **14619461**, and if you desaturate by 10%, it is **14630759**.

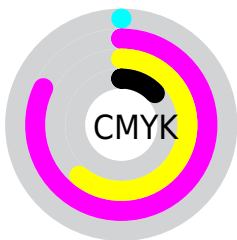
# Distribution



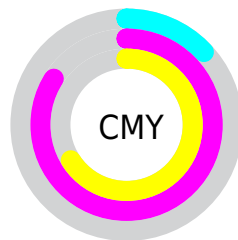
- Red (87%)
- Green (16%)
- Blue (34%)



- Red (87%)
- Yellow (16%)
- Blue (34%)



- Cyan (0%)
- Magenta (82%)
- Yellow (61%)
- Black (13%)



- Cyan (13%)
- Magenta (84%)
- Yellow (66%)

# Brightness & Saturation Gradients

These gradients show how the Decimal color 14625110 changes by changing the brightness by 10 percent. The first figure shows a shift by +10% for each color and the second figure -10%.

Similar to the brightness gradients but the following saturation gradients show a change of the Decimal color 14625110 by changing the saturation by 10% instead.



 14625110

 14625110

16777215

 12517439

 16738951

 10485802

 16746657

 8454166

 16754108

 6488065

 16761560

 4587523

 16769269

 2424833

16776959

 0

 14625110

 14625110

 14619461

 14630759

■ 14614583

■ 14636664

■ 14642312

■ 14647961

■ 14653610

■ 14659515

■ 14665164

■ 14670812

■ 14676717

# Harmonies

## Analogous

The Analogous color harmony consists of three colors that are next to each other on the color wheel.



13905299



14625110



13388570

# Triad

The Triadic color harmony groups three colors that are evenly spaced from another and form a triangle on the color wheel.



14625110



887056



34286

# Complementary

The Complementary color scheme is a pair of colors which are on the opposite of each other on the color wheel.



14625110



2744242

# Split Complementary

Split-complementary colors differ from the complementary color scheme. The scheme consists of three colors, the original color and two neighbors of the complement color.



36559



14625110



36440

# Square

The Square scheme is like the rectangle color scheme, but the four colors are evenly spaced on the color wheel.



14625110



7240960



37016



356844

# Rectangle

The Rectangle color scheme consists of four colors that form a rectangle on the color wheel.



14625110



11821056



37016



35303



# Sweetspot

The Sweet Spot groups the original color and five complimentary colors.



14625110



16761553



11676127



8412004



0



8421504



# Same Dimension

The Same Dimension uses a secret algorithm to generate beautiful new colors.



14625110



16713027



14636841



7365992



11534380



3145740



# Inverse Universe

The Inverse Universe completely reimagines the original color for something new.



14625110



16713027



2732767



7365992



11534380



3145740



# Previews

## White Background



This preview shows how the Decimal color 14625110 looks on a white background.

## Color Contrast Check

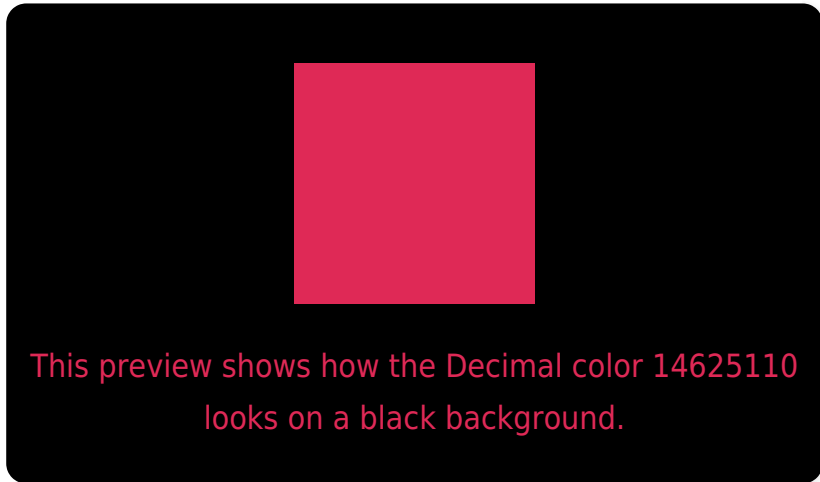
Large Text (above 18pt) WCAG AA ✓ Pass

Any Text WCAG AA ✓ Pass

Large Text (above 18pt) WCAG AAA ✓ Pass

Any Text WCAG AAA × Fail

# Black Background



## Color Contrast Check

Large Text (above 18pt) WCAG AA ✓ Pass

Any Text WCAG AA ✓ Pass

Large Text (above 18pt) WCAG AAA ✓ Pass

Any Text WCAG AAA × Fail

If you want to check with other color combinations, try the [Color Contrast Checker](#).



## Decimal 14625110 Background



This preview shows how black text looks on a background with the Decimal color 14625110.

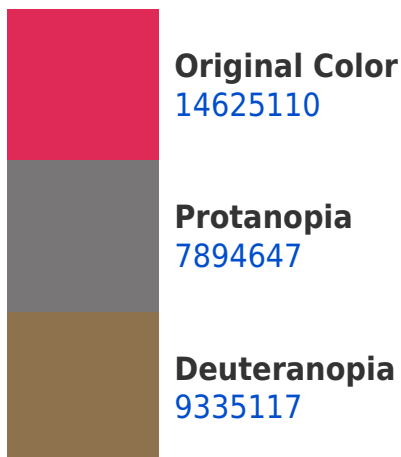



This preview shows how white text looks on a background with the Decimal color 14625110.

# Color Blindness Simulation

Color vision deficiency is a very complex topic, and I could not describe the different causes any better than Wikipedia does, so if you want to learn more, you should check out their [article about color blindness](#).

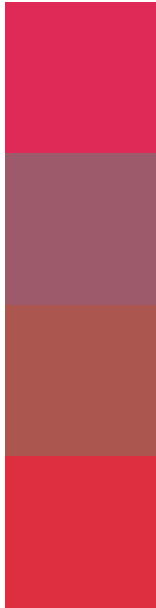
## Dichromacy





**Tritanopia**  
14561843

# Trichromacy



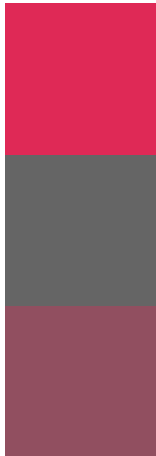
**Original Color**  
14625110

**Protanomaly**  
10312299

**Deuteranomaly**  
11229008

**Tritanomaly**  
14561088

# Monochromacy



**Original Color**  
14625110

**Achromatopsia**  
6645093

**Achromatomaly**  
9523040

# CSS Examples

## Text

The CSS property to change the color of the text to Decimal 14625110 is called "color". The color property can be set on classes, ids or directly on the HTML element.

This example shows how text in the color #DF2956 looks like.

```
.text, #text, p{  
    color:#DF2956  
}
```

If you want to add a text shadow in that color use the text-shadow property, you can generate a text shadow directly with our [CSS Text Shadow Generator](#).

Here you see how black text with a 4 pixel #DF2956 colored shadow looks like.

```
.shadow{ text-shadow: 4px 4px 2px #DF2956
}
```

## Border

The CSS property to change the border of an element to Decimal 14625110 is called "border". The border property can be set on classes, ids or directly on the HTML element.

This example shows the color as border, it can be applied via the CSS property "border" or "border-color".

```
.border, #border, table{ border:4px solid
#DF2956 }
```

If only the border color should be changed use the property `border-color`.

```
.border{ border-color:#DF2956 }
```

If you want to add a box shadow in that color use:

Here you see how a box with a 4 pixel #DF2956 colored shadow looks like.

```
.boxshadow{ -moz-box-shadow:4px 4px 4px  
4px #DF2956; -webkit-box-shadow:4px 4px  
4px 4px #DF2956; box-shadow:4px 4px 4px  
4px #DF2956 }
```

# Background

The CSS property to change the background color of an element to Decimal 14625110 is called "background". The background property can be set on classes, ids or directly on the HTML element.

```
.background, #background, body{  
background:#DF2956 }
```

If only the background color should be changed can be used:

```
.background{ background-color:#DF2956 }
```

This example shows the color as background, it is applied via the CSS property "background".

To optimize and compress your CSS code, you can use our [online CSS compressor and optimizer](#) based on csstidy. If you want to create a linear or radial gradient as background or border, check our [CSS Gradient Generator](#).



Hey! You found this booklet interesting? Support Converting Colors with the new Membership Option!

The pro membership hides all ads, plus gives you double the colors in the color bucket, and more awesome pro features!

**[Learn more, Memberships starting at \\$2.50/m!](#)**

**Follow me  
on Twitter!**

@ConvertingColor