

Converting Colors

Decimal(14635659)

Have a look what the booklet for
Decimal(14635659) contains.

Decimal(14635659)	3
<i>Conversions</i>	4
<i>Details</i>	6
<i>Harmonies</i>	11
<i>Previews</i>	23
<i>Color Blindness Simulation</i>	26
<i>CSS Examples</i>	29

Color

Decimal(14635659)

Conversions

Conversions Part 1

Format	Color
Hex	DF528B
RGB	223, 82, 139
RGB Percent	87%, 32%, 55%
CMY	0.1255, 0.6784, 0.4549
CMYK	0.00, 0.63, 0.38, 0.13
HSL	336°, 69%, 60%
HSV	336°, 63%, 87%
XYZ	38.1089, 23.5866, 26.9702
YIQ	130.6570, 65.7390, 47.6190

Conversions

Conversions Part 2

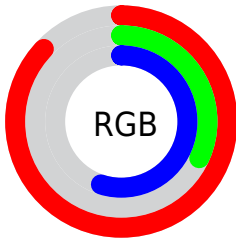
Format	Color
R_{YB}	223, 82, 139
Decimal	14635659
CIE _{Lab}	55.67, 59.76, -2.03
CIE _{LCh}	56, 59.800, 358.052
Yxy	23.5866, 0.4298, 0.2660
Android (android.graphics.Color)	4292825739 (0xFFDF528B)
YUV	130.6570, 4.1131, 80.9848
Hunter-Lab	48.5661, 55.0751, 1.0707

Details

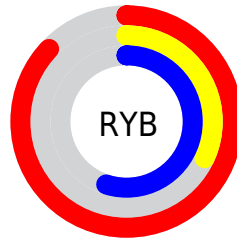
The Decimal color **14635659** is a dark color, and the websafe version is hex **FF6699**. The color can be described as middle muted rose. A complement of this color would be **5431206**, and the grayscale version is **8618883**.

A 20% lighter version of the original color is **16747200**, and **10685785** is the 20% darker color. If you saturate the color by 10%, you get **14630014**, and if you desaturate by 10%, it is **14641304**.

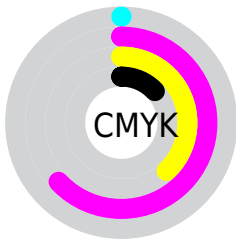
Distribution



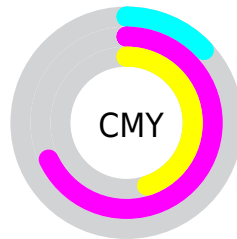
- Red (87%)
- Green (32%)
- Blue (55%)



- Red (87%)
- Yellow (32%)
- Blue (55%)



- Cyan (0%)
- Magenta (63%)
- Yellow (38%)
- Black (13%)



- Cyan (13%)
- Magenta (68%)
- Yellow (45%)

Brightness & Saturation Gradients

These gradients show how the Decimal color 14635659 changes by changing the brightness by 10 percent. The first figure shows a shift by +10% for each color and the second figure -10%.

Similar to the brightness gradients but the following saturation gradients show a change of the Decimal color 14635659 by changing the saturation by 10% instead.

 14635659

 14635659

16777215

 12661874

 16747200

 10685785

 16754652

 8781890

 16761849

 6946860

 16769535

 5046296

16776959

 3342338

 0

 14635659

 14635659

 14630014

 14641304

 14624112

 14647206

 14618467

 14652851

 14614618

 14658496

 14664397

 14670043

 14675688

 14680053

 14680063

Harmonies

Analogous

The Analogous color harmony consists of three colors that are next to each other on the color wheel.



12607933



14635659



14702680

Triad

The Triadic color harmony groups three colors that are evenly spaced from another and form a triangle on the color wheel.



14635659



7311645



39133

Complementary

The Complementary color scheme is a pair of colors which are on the opposite of each other on the color wheel.



14635659



5431206

Split Complementary

Split-complementary colors differ from the complementary color scheme. The scheme consists of three colors, the original color and two neighbors of the complement color.



40373



14635659



1546571

Square

The Square scheme is like the rectangle color scheme, but the four colors are evenly spaced on the color wheel.



14635659



10650119



40320



36077

Rectangle

The Rectangle color scheme consists of four colors that form a rectangle on the color wheel.



14635659



13854265



40320



39890

Sweetspot

The Sweet Spot groups the original color and five complimentary colors.



14635659



16764898



10769119



8413806



0



8421504

Same Dimension

The Same Dimension uses a secret algorithm to generate beautiful new colors.



14635659



16727436



14638674



7365994



11534407



3145748

Inverse Universe

The Inverse Universe completely reimagines the original color for something new.



14635659



16727436



5428191



7365994



11534407



3145748

Previews

White Background



This preview shows how the Decimal color 14635659 looks on a white background.

Color Contrast Check

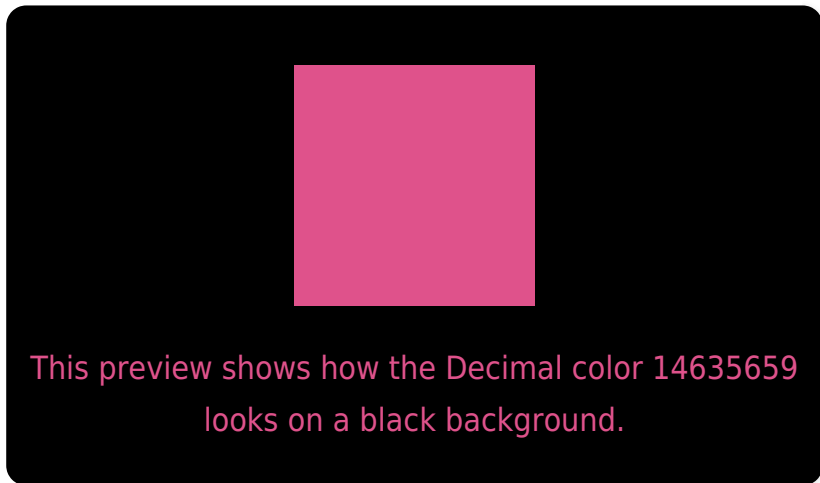
Large Text (above 18pt) WCAG AA ✓ Pass

Any Text WCAG AA × Fail

Large Text (above 18pt) WCAG AAA × Fail

Any Text WCAG AAA × Fail

Black Background



Color Contrast Check

Large Text (above 18pt) WCAG AA ✓ Pass

Any Text WCAG AA ✓ Pass

Large Text (above 18pt) WCAG AAA ✓ Pass

Any Text WCAG AAA × Fail

If you want to check with other color combinations, try the [Color Contrast Checker](#).

Decimal 14635659 Background



This preview shows how black text looks on a background with the Decimal color 14635659.




This preview shows how white text looks on a background with the Decimal color 14635659.

Color Blindness Simulation

Color vision deficiency is a very complex topic, and I could not describe the different causes any better than Wikipedia does, so if you want to learn more, you should check out their [article about color blindness](#).

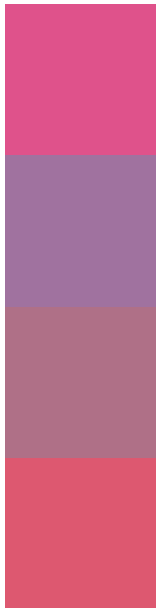
Dichromacy





Tritanopia
14441313

Trichromacy



Original Color
14635659

Protanomaly
10515103

Deuteranomaly
11497607

Tritanomaly
14506096

Monochromacy



Original Color
14635659

Achromatopsia
8618883

Achromatomaly
10776966

CSS Examples

Text

The CSS property to change the color of the text to Decimal 14635659 is called "color". The color property can be set on classes, ids or directly on the HTML element.

This example shows how text in the color #DF528B looks like.

```
.text, #text, p{  
    color:#DF528B  
}
```

If you want to add a text shadow in that color use the text-shadow property, you can generate a text shadow directly with our [CSS Text Shadow Generator](#).

Here you see how black text with a 4 pixel #DF528B colored shadow looks like.

```
.shadow{ text-shadow: 4px 4px 2px #DF528B
}
```

Border

The CSS property to change the border of an element to Decimal 14635659 is called "border". The border property can be set on classes, ids or directly on the HTML element.

This example shows the color as border, it can be applied via the CSS property "border" or "border-color".

```
.border, #border, table{ border:4px solid
#DF528B }
```

If only the border color should be changed use the property `border-color`.

```
.border{ border-color:#DF528B }
```

If you want to add a box shadow in that color use:

Here you see how a box with a 4 pixel #DF528B colored shadow looks like.

```
.boxshadow{ -moz-box-shadow:4px 4px 4px  
4px #DF528B; -webkit-box-shadow:4px 4px  
4px 4px #DF528B; box-shadow:4px 4px 4px  
4px #DF528B }
```

Background

The CSS property to change the background color of an element to Decimal 14635659 is called "background". The background property can be set on classes, ids or directly on the HTML element.

```
.background, #background, body{  
background:#DF528B }
```

If only the background color should be changed can be used:

```
.background{ background-color:#DF528B }
```

This example shows the color as background, it is applied via the CSS property "background".

To optimize and compress your CSS code, you can use our [online CSS compressor and optimizer](#) based on csstidy. If you want to create a linear or radial gradient as background or border, check our [CSS Gradient Generator](#).

Hey! You found this booklet interesting? Support Converting Colors with the new Membership Option!

The pro membership hides all ads, plus gives you double the colors in the color bucket, and more awesome pro features!

[Learn more, Memberships starting at \\$2.50/m!](#)

**Follow me
on Twitter!**

@ConvertingColor