

# Converting Colors

Decimal(14637443)

Have a look what the booklet for  
Decimal(14637443) contains.

<b>Decimal(14637443)</b> .....	3
<i><b>Conversions</b></i> .....	4
<i><b>Details</b></i> .....	6
<i><b>Harmonies</b></i> .....	11
<i><b>Previews</b></i> .....	23
<i><b>Color Blindness Simulation</b></i> .....	26
<i><b>CSS Examples</b></i> .....	29

# Color

**Decimal(14637443)**

# Conversions

## Conversions Part 1

<b>Format</b>	<b>Color</b>
Hex	DF5983
RGB	223, 89, 131
RGB Percent	87%, 35%, 51%
CMY	0.1255, 0.6510, 0.4863
CMYK	0.00, 0.60, 0.41, 0.13
HSL	341°, 68%, 61%
HSV	341°, 60%, 87%
XYZ	38.1005, 24.4714, 24.1881
YIQ	133.8540, 66.3820, 41.4700

# Conversions

## Conversions Part 2

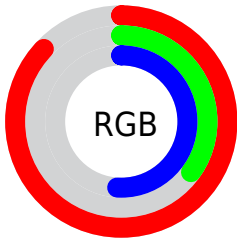
<b>Format</b>	<b>Color</b>
<b>R<sub>YB</sub></b>	223, 89, 131
Decimal	14637443
CIE <sub>Lab</sub>	56.56, 55.92, 3.97
CIE <sub>LCh</sub>	57, 56.063, 4.061
Yxy	24.4714, 0.4391, 0.2821
Android (android.graphics.Color)	4292827523 (0xFFDF5983)
YUV	133.8540, -1.4070, 78.1810
Hunter-Lab	49.4686, 50.9100, 5.6377

# Details

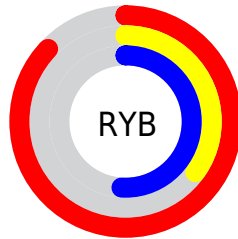
The Decimal color **14637443** is a dark color, and the websafe version is hex **FF6699**. The color can be described as middle muted rose. A complement of this color would be **5889973**, and the grayscale version is **8816262**.

A 20% lighter version of the original color is **16748728**, and **10689874** is the 20% darker color. If you saturate the color by 10%, you get **14631796**, and if you desaturate by 10%, it is **14643090**.

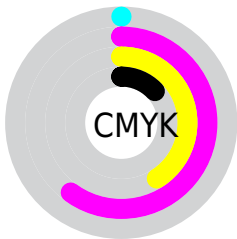
# Distribution



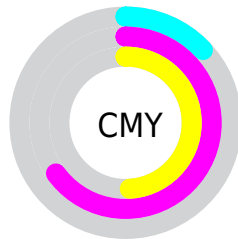
- Red (87%)
- Green (35%)
- Blue (51%)



- Red (87%)
- Yellow (35%)
- Blue (51%)



- Cyan (0%)
- Magenta (60%)
- Yellow (41%)
- Black (13%)



- Cyan (13%)
- Magenta (65%)
- Yellow (49%)

# Brightness & Saturation Gradients

These gradients show how the Decimal color 14637443 changes by changing the brightness by 10 percent. The first figure shows a shift by +10% for each color and the second figure -10%.

Similar to the brightness gradients but the following saturation gradients show a change of the Decimal color 14637443 by changing the saturation by 10% instead.



 14637443

 14637443

16777215

 12664170

 16748728

 10689874

 16756179

 8781883

 16763376

 6881318

 16770815

 5046289

 3342338

 0

 14637443

 14637443

 14631796

 14643090

 14625892

 14648994

 14620245

 14654641

 14614598

 14660288

 14666192

 14671839

 14677486

 14680061

 14680063

# Harmonies

## Analogous

The Analogous color harmony consists of three colors that are next to each other on the color wheel.



13132723



14637443



14377556

# Triad

The Triadic color harmony groups three colors that are evenly spaced from another and form a triangle on the color wheel.



14637443



6853680



39135

# Complementary

The Complementary color scheme is a pair of colors which are on the opposite of each other on the color wheel.



14637443



5889973

# Split Complementary

Split-complementary colors differ from the complementary color scheme. The scheme consists of three colors, the original color and two neighbors of the complement color.



40637



14637443



40027

# Square

The Square scheme is like the rectangle color scheme, but the four colors are evenly spaced on the color wheel.



14637443



10192666



40845



887785

# Rectangle

The Rectangle color scheme consists of four colors that form a rectangle on the color wheel.



14637443



13397817



40845



39894



# Sweetspot

The Sweet Spot groups the original color and five complimentary colors.



14637443



16765407



11885023



8414060



0



8421504



# Same Dimension

The Same Dimension uses a secret algorithm to generate beautiful new colors.



14637443



16729985



14643801



7365992



11534391



3145743



# Inverse Universe

The Inverse Universe completely reimagines the original color for something new.



14637443



16729985



5883615



7365992



11534391



3145743



# Previews

## White Background



This preview shows how the Decimal color 14637443 looks on a white background.

## Color Contrast Check

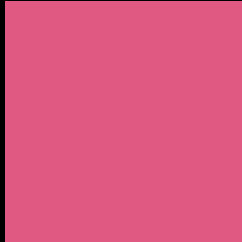
Large Text (above 18pt) WCAG AA ✓ Pass

Any Text WCAG AA × Fail

Large Text (above 18pt) WCAG AAA × Fail

Any Text WCAG AAA × Fail

# Black Background



This preview shows how the Decimal color 14637443 looks on a black background.

## Color Contrast Check

Large Text (above 18pt) WCAG AA ✓ Pass

Any Text WCAG AA ✓ Pass

Large Text (above 18pt) WCAG AAA ✓ Pass

Any Text WCAG AAA × Fail

If you want to check with other color combinations, try the [Color Contrast Checker](#).



## Decimal 14637443 Background



This preview shows how black text looks on a background with the Decimal color 14637443.



This preview shows how white text looks on a background with the Decimal color 14637443.

# Color Blindness Simulation

Color vision deficiency is a very complex topic, and I could not describe the different causes any better than Wikipedia does, so if you want to learn more, you should check out their [article about color blindness](#).

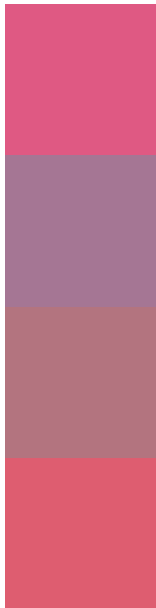
## Dichromacy





**Tritanopia**  
14507877

# Trichromacy



**Original Color**  
14637443

**Protanomaly**  
10843796

**Deuteranomaly**  
11760767

**Tritanomaly**  
14572912

# Monochromacy



**Original Color**  
14637443

**Achromatopsia**  
8816262

**Achromatomaly**  
10909317

# CSS Examples

## Text

The CSS property to change the color of the text to Decimal 14637443 is called "color". The color property can be set on classes, ids or directly on the HTML element.

This example shows how text in the color #DF5983 looks like.

```
.text, #text, p{  
    color:#DF5983  
}
```

If you want to add a text shadow in that color use the text-shadow property, you can generate a text shadow directly with our [CSS Text Shadow Generator](#).

Here you see how black text with a 4 pixel #DF5983 colored shadow looks like.

```
.shadow{ text-shadow: 4px 4px 2px #DF5983
}
```

## Border

The CSS property to change the border of an element to Decimal 14637443 is called "border". The border property can be set on classes, ids or directly on the HTML element.

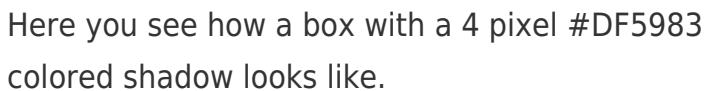
This example shows the color as border, it can be applied via the CSS property "border" or "border-color".

```
.border, #border, table{ border:4px solid
#DF5983 }
```

If only the border color should be changed use the property `border-color`.

```
.border{ border-color:#DF5983 }
```

If you want to add a box shadow in that color use:



Here you see how a box with a 4 pixel `#DF5983` colored shadow looks like.

```
.boxshadow{ -moz-box-shadow:4px 4px 4px  
4px #DF5983; -webkit-box-shadow:4px 4px  
4px 4px #DF5983; box-shadow:4px 4px 4px  
4px #DF5983 }
```

# Background

The CSS property to change the background color of an element to Decimal 14637443 is called "background". The background property can be set on classes, ids or directly on the HTML element.

```
.background, #background, body{  
background:#DF5983 }
```

If only the background color should be changed can be used:

```
.background{ background-color:#DF5983 }
```

This example shows the color as background, it is applied via the CSS property "background".

To optimize and compress your CSS code, you can use our [online CSS compressor and optimizer](#) based on csstidy. If you want to create a linear or radial gradient as background or border, check our [CSS Gradient Generator](#).



Hey! You found this booklet interesting? Support Converting Colors with the new Membership Option!

The pro membership hides all ads, plus gives you double the colors in the color bucket, and more awesome pro features!

**[Learn more, Memberships starting at \\$2.50/m!](#)**

**Follow me  
on Twitter!**

@ConvertingColor