

# Converting Colors

Decimal(14637452)

Have a look what the booklet for  
Decimal(14637452) contains.

<b>Decimal(14637452)</b> .....	3
<i><b>Conversions</b></i> .....	4
<i><b>Details</b></i> .....	6
<i><b>Harmonies</b></i> .....	11
<i><b>Previews</b></i> .....	23
<i><b>Color Blindness Simulation</b></i> .....	26
<i><b>CSS Examples</b></i> .....	29

# Color

**Decimal(14637452)**

# Conversions

## Conversions Part 1

<b>Format</b>	<b>Color</b>
Hex	DF598C
RGB	223, 89, 140
RGB Percent	87%, 35%, 55%
CMY	0.1255, 0.6510, 0.4510
CMYK	0.00, 0.60, 0.37, 0.13
HSL	337°, 68%, 61%
HSV	337°, 60%, 87%
XYZ	38.7374, 24.7262, 27.5419
YIQ	134.8800, 63.4930, 44.2690

# Conversions

## Conversions Part 2

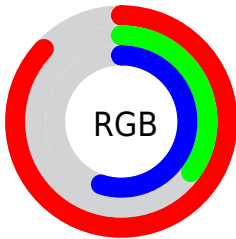
<b>Format</b>	<b>Color</b>
<b>R<sub>YB</sub></b>	223, 89, 140
Decimal	14637452
CIE Lab	56.81, 56.88, -0.96
CIE LCh	57, 56.892, 359.038
Yxy	24.7262, 0.4257, 0.2717
Android (android.graphics.Color)	4292827532 (0xFFDF598C)
YUV	134.8800, 2.5242, 77.2812
Hunter-Lab	49.7254, 52.0367, 1.9683

# Details

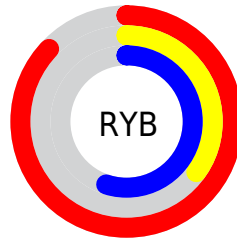
The Decimal color **14637452** is a dark color, and the websafe version is hex **FF6699**. The color can be described as middle muted rose. A complement of this color would be **5889964**, and the grayscale version is **8882055**.

A 20% lighter version of the original color is **16748993**, and **10755162** is the 20% darker color. If you saturate the color by 10%, you get **14631806**, and if you desaturate by 10%, it is **14643098**.

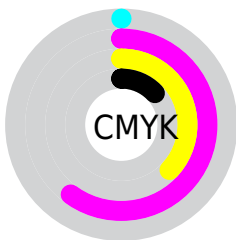
# Distribution



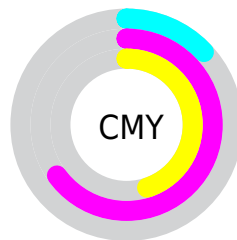
- Red (87%)
- Green (35%)
- Blue (55%)



- Red (87%)
- Yellow (35%)
- Blue (55%)



- Cyan (0%)
- Magenta (60%)
- Yellow (37%)
- Black (13%)



- Cyan (13%)
- Magenta (65%)
- Yellow (45%)

# Brightness & Saturation Gradients

These gradients show how the Decimal color 14637452 changes by changing the brightness by 10 percent. The first figure shows a shift by +10% for each color and the second figure -10%.

Similar to the brightness gradients but the following saturation gradients show a change of the Decimal color 14637452 by changing the saturation by 10% instead.



 14637452

 14637452

16777215

 12664179

 16748993

 10755162

 16756189

 8847427

 16763386

 6946861

 16771071

 5111833

 3407874

 0

 14637452

 14637452

 14631806

 14643098

 14625904

 14649000

 14620259

 14654645

 14614613

 14660291

 14666193

 14671839

 14677485

 14680059

 14680063

# Harmonies

## Analogous

The Analogous color harmony consists of three colors that are next to each other on the color wheel.



12805820



14637452



14638939

# Triad

The Triadic color harmony groups three colors that are evenly spaced from another and form a triangle on the color wheel.



14637452



7508777



39645

# Complementary

The Complementary color scheme is a pair of colors which are on the opposite of each other on the color wheel.



14637452



5889964

# Split Complementary

Split-complementary colors differ from the complementary color scheme. The scheme consists of three colors, the original color and two neighbors of the complement color.



40887



14637452



2464851

# Square

The Square scheme is like the rectangle color scheme, but the four colors are evenly spaced on the color wheel.



14637452



10716440



41093



36588

# Rectangle

The Rectangle color scheme consists of four colors that form a rectangle on the color wheel.



14637452



13855550



41093



40402



# Sweetspot

The Sweet Spot groups the original color and five complimentary colors.



14637452



16765411



11295199



8414062



0



8421504



# Same Dimension

The Same Dimension uses a secret algorithm to generate beautiful new colors.



14637452



16729997



14641497



7365993



11534403



3145746



# Inverse Universe

The Inverse Universe completely reimagines the original color for something new.



14637452



16729997



5885919



7365993



11534403



3145746



# Previews

## White Background



This preview shows how the Decimal color 14637452 looks on a white background.

## Color Contrast Check

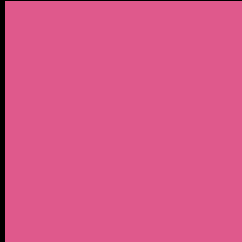
Large Text (above 18pt) WCAG AA ✓ Pass

Any Text WCAG AA × Fail

Large Text (above 18pt) WCAG AAA × Fail

Any Text WCAG AAA × Fail

# Black Background



This preview shows how the Decimal color 14637452 looks on a black background.

## Color Contrast Check

Large Text (above 18pt) WCAG AA ✓ Pass

Any Text WCAG AA ✓ Pass

Large Text (above 18pt) WCAG AAA ✓ Pass

Any Text WCAG AAA × Fail

If you want to check with other color combinations, try the [Color Contrast Checker](#).



## Decimal 14637452 Background



This preview shows how black text looks on a background with the Decimal color 14637452.



This preview shows how white text looks on a background with the Decimal color 14637452.

# Color Blindness Simulation

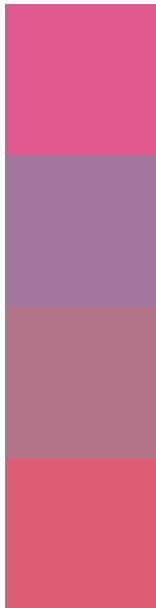
Color vision deficiency is a very complex topic, and I could not describe the different causes any better than Wikipedia does, so if you want to learn more, you should check out their [article about color blindness](#).

## Dichromacy





# Trichromacy



**Original Color**  
14637452

**Protanomaly**  
10712734

**Deuteranomaly**  
11629704

**Tritanomaly**  
14507636

# Monochromacy



**Original Color**  
14637452

**Achromatopsia**  
8882055

**Achromatomaly**  
10974857

# CSS Examples

## Text

The CSS property to change the color of the text to Decimal 14637452 is called "color". The color property can be set on classes, ids or directly on the HTML element.

This example shows how text in the color #DF598C looks like.

```
.text, #text, p{  
    color:#DF598C  
}
```

If you want to add a text shadow in that color use the text-shadow property, you can generate a text shadow directly with our [CSS Text Shadow Generator](#).

Here you see how black text with a 4 pixel #DF598C colored shadow looks like.

```
.shadow{ text-shadow: 4px 4px 2px #DF598C
}
```

## Border

The CSS property to change the border of an element to Decimal 14637452 is called "border". The border property can be set on classes, ids or directly on the HTML element.

This example shows the color as border, it can be applied via the CSS property "border" or "border-color".

```
.border, #border, table{ border:4px solid
#DF598C }
```

If only the border color should be changed use the property `border-color`.

```
.border{ border-color:#DF598C }
```

If you want to add a box shadow in that color use:

Here you see how a box with a 4 pixel #DF598C colored shadow looks like.

```
.boxshadow{ -moz-box-shadow:4px 4px 4px  
4px #DF598C; -webkit-box-shadow:4px 4px  
4px 4px #DF598C; box-shadow:4px 4px 4px  
4px #DF598C }
```

# Background

The CSS property to change the background color of an element to Decimal 14637452 is called "background". The background property can be set on classes, ids or directly on the HTML element.

```
.background, #background, body{  
background:#DF598C }
```

If only the background color should be changed can be used:

```
.background{ background-color:#DF598C }
```

This example shows the color as background, it is applied via the CSS property "background".

To optimize and compress your CSS code, you can use our [online CSS compressor and optimizer](#) based on csstidy. If you want to create a linear or radial gradient as background or border, check our [CSS Gradient Generator](#).



Hey! You found this booklet interesting? Support Converting Colors with the new Membership Option!

The pro membership hides all ads, plus gives you double the colors in the color bucket, and more awesome pro features!

**[Learn more, Memberships starting at \\$2.50/m!](#)**

**Follow me  
on Twitter!**

@ConvertingColor