

Converting Colors

Decimal(14637969)

Have a look what the booklet for
Decimal(14637969) contains.

Decimal(14637969)	3
<i>Conversions</i>	4
<i>Details</i>	6
<i>Harmonies</i>	11
<i>Previews</i>	23
<i>Color Blindness Simulation</i>	26
<i>CSS Examples</i>	29

Color

Decimal(14637969)

Conversions

Conversions Part 1

Format	Color
Hex	DF5B91
RGB	223, 91, 145
RGB Percent	87%, 36%, 57%
CMY	0.1255, 0.6431, 0.4314
CMYK	0.00, 0.59, 0.35, 0.13
HSL	335°, 67%, 62%
HSV	335°, 59%, 87%
XYZ	39.2833, 25.2145, 29.5845
YIQ	136.6240, 61.3380, 44.7780

Conversions

Conversions Part 2

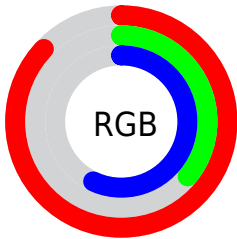
Format	Color
R_{YB}	223, 91, 145
Decimal	14637969
CIE _{Lab}	57.28, 56.56, -3.19
CIE _{LCh}	57, 56.654, 356.775
Yxy	25.2145, 0.4175, 0.2680
Android (android.graphics.Color)	4292828049 (0xFFDF5B91)
YUV	136.6240, 4.1294, 75.7518
Hunter-Lab	50.2140, 51.7693, 0.2181

Details

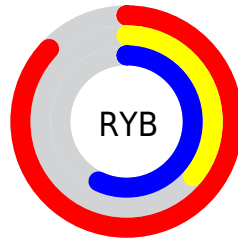
The Decimal color **14637969** is a light color, and the websafe version is hex **FF6699**. The color can be described as light muted rose. A complement of this color would be **6021033**, and the grayscale version is **9013641**.

A 20% lighter version of the original color is **16749511**, and **10755935** is the 20% darker color. If you saturate the color by 10%, you get **14632324**, and if you desaturate by 10%, it is **14643614**.

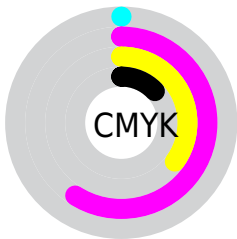
Distribution



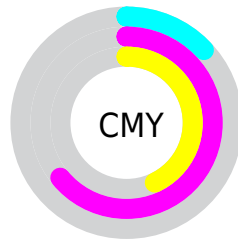
- Red (87%)
- Green (36%)
- Blue (57%)



- Red (87%)
- Yellow (36%)
- Blue (57%)



- Cyan (0%)
- Magenta (59%)
- Yellow (35%)
- Black (13%)



- Cyan (13%)
- Magenta (64%)
- Yellow (43%)

Brightness & Saturation Gradients

These gradients show how the Decimal color 14637969 changes by changing the brightness by 10 percent. The first figure shows a shift by +10% for each color and the second figure -10%.

Similar to the brightness gradients but the following saturation gradients show a change of the Decimal color 14637969 by changing the saturation by 10% instead.

 14637969

 14637969

16777215

 12664695

 16749511

 10755935

 16756707

 8847431

 16763903

 7012401

 16771583

 5177372

 3538946

 327680

 0

 14637969

 14637969

 14632324

 14643614

 14626423

 14649515

 14620777

 14655161

 14615132

 14660806

 14614619

 14666707

 14672352

 14677997

 14680058

 14680063

Harmonies

Analogous

The Analogous color harmony consists of three colors that are next to each other on the color wheel.



12609984



14637969



14770272

Triad

The Triadic color harmony groups three colors that are evenly spaced from another and form a triangle on the color wheel.



14637969



7836712



40156

Complementary

The Complementary color scheme is a pair of colors which are on the opposite of each other on the color wheel.



14637969



6021033

Split Complementary

Split-complementary colors differ from the complementary color scheme. The scheme consists of three colors, the original color and two neighbors of the complement color.



41397



14637969



3251537

Square

The Square scheme is like the rectangle color scheme, but the four colors are evenly spaced on the color wheel.



14637969



11044123



41346



37356

Rectangle

The Rectangle color scheme consists of four colors that form a rectangle on the color wheel.



14637969



14052163



41346



40657

Sweetspot

The Sweet Spot groups the original color and five complimentary colors.



14637969



16765412



11033567



8414063



0



8421504

Same Dimension

The Same Dimension uses a secret algorithm to generate beautiful new colors.



14637969



16730772



14640731



7365994



11534408



3145748

Inverse Universe

The Inverse Universe completely reimagines the original color for something new.



14637969



16730772



6018271



7365994



11534408



3145748

Previews

White Background



This preview shows how the Decimal color 14637969 looks on a white background.

Color Contrast Check

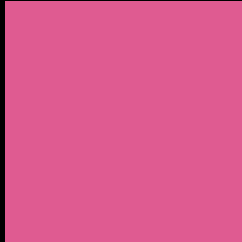
Large Text (above 18pt) WCAG AA ✓ Pass

Any Text WCAG AA × Fail

Large Text (above 18pt) WCAG AAA × Fail

Any Text WCAG AAA × Fail

Black Background



This preview shows how the Decimal color 14637969 looks on a black background.

Color Contrast Check

Large Text (above 18pt) WCAG AA ✓ Pass

Any Text WCAG AA ✓ Pass

Large Text (above 18pt) WCAG AAA ✓ Pass

Any Text WCAG AAA × Fail

If you want to check with other color combinations, try the [Color Contrast Checker](#).

Decimal 14637969 Background



This preview shows how black text looks on a background with the Decimal color 14637969.




This preview shows how white text looks on a background with the Decimal color 14637969.

Color Blindness Simulation

Color vision deficiency is a very complex topic, and I could not describe the different causes any better than Wikipedia does, so if you want to learn more, you should check out their [article about color blindness](#).

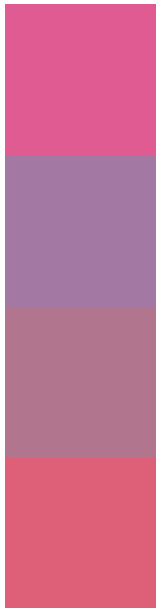
Dichromacy





Tritanopia
14443370

Trichromacy



Original Color
14637969

Protanomaly
10713251

Deuteranomaly
11630221

Tritanomaly
14508152

Monochromacy



Original Color
14637969

Achromatopsia
9013641

Achromatomaly
11040908

CSS Examples

Text

The CSS property to change the color of the text to Decimal 14637969 is called "color". The color property can be set on classes, ids or directly on the HTML element.

This example shows how text in the color #DF5B91 looks like.

```
.text, #text, p{  
    color:#DF5B91  
}
```

If you want to add a text shadow in that color use the text-shadow property, you can generate a text shadow directly with our [CSS Text Shadow Generator](#).

Here you see how black text with a 4 pixel #DF5B91 colored shadow looks like.

```
.shadow{ text-shadow: 4px 4px 2px #DF5B91
}
```

Border

The CSS property to change the border of an element to Decimal 14637969 is called "border". The border property can be set on classes, ids or directly on the HTML element.

This example shows the color as border, it can be applied via the CSS property "border" or "border-color".

```
.border, #border, table{ border:4px solid
#DF5B91 }
```

If only the border color should be changed use the property `border-color`.

```
.border{ border-color:#DF5B91 }
```

If you want to add a box shadow in that color use:

Here you see how a box with a 4 pixel #DF5B91 colored shadow looks like.

```
.boxshadow{ -moz-box-shadow:4px 4px 4px  
4px #DF5B91; -webkit-box-shadow:4px 4px  
4px 4px #DF5B91; box-shadow:4px 4px 4px  
4px #DF5B91 }
```

Background

The CSS property to change the background color of an element to Decimal 14637969 is called "background". The background property can be set on classes, ids or directly on the HTML element.

```
.background, #background, body{  
background:#DF5B91 }
```

If only the background color should be changed can be used:

```
.background{ background-color:#DF5B91 }
```

This example shows the color as background, it is applied via the CSS property "background".

To optimize and compress your CSS code, you can use our [online CSS compressor and optimizer](#) based on csstidy. If you want to create a linear or radial gradient as background or border, check our [CSS Gradient Generator](#).

Hey! You found this booklet interesting? Support Converting Colors with the new Membership Option!

The pro membership hides all ads, plus gives you double the colors in the color bucket, and more awesome pro features!

[Learn more, Memberships starting at \\$2.50/m!](#)

**Follow me
on Twitter!**

@ConvertingColor