

Converting Colors

Decimal(14645664)

Have a look what the booklet for
Decimal(14645664) contains.

Decimal(14645664)	3
<i>Conversions</i>	4
<i>Details</i>	6
<i>Harmonies</i>	11
<i>Previews</i>	23
<i>Color Blindness Simulation</i>	26
<i>CSS Examples</i>	29

Color

Decimal(14645664)

Conversions

Conversions Part 1

Format	Color
Hex	DF79A0
RGB	223, 121, 160
RGB Percent	87%, 47%, 63%
CMY	0.1255, 0.5255, 0.3725
CMYK	0.00, 0.46, 0.28, 0.13
HSL	337°, 61%, 67%
HSV	337°, 46%, 87%
XYZ	43.6140, 31.9008, 37.1165
YIQ	155.9440, 48.2730, 33.7530

Conversions

Conversions Part 2

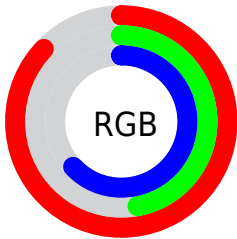
Format	Color
R_{YB}	223, 121, 160
Decimal	14645664
CIE _{Lab}	63.26, 44.01, -3.05
CIE _{LCh}	63, 44.120, 356.030
Yxy	31.9008, 0.3872, 0.2832
Android (android.graphics.Color)	4292835744 (0xFFDF79A0)
YUV	155.9440, 1.9996, 58.8081
Hunter-Lab	56.4808, 38.9948, 0.5740

Details

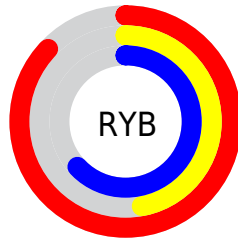
The Decimal color **14645664** is a light color, and the websafe version is hex **CC6699**. A complement of this color would be **7987128**, and the grayscale version is **10263708**.

A 20% lighter version of the original color is **16756695**, and **10831213** is the 20% darker color. If you saturate the color by 10%, you get **14640018**, and if you desaturate by 10%, it is **14651310**.

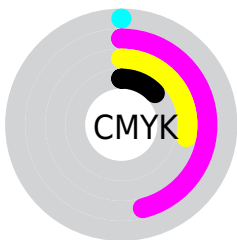
Distribution



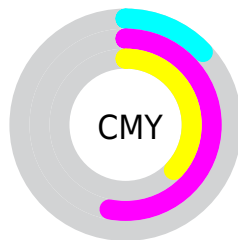
- Red (87%)
- Green (47%)
- Blue (63%)



- Red (87%)
- Yellow (47%)
- Blue (63%)



- Cyan (0%)
- Magenta (46%)
- Yellow (28%)
- Black (13%)



- Cyan (13%)
- Magenta (53%)
- Yellow (37%)

Brightness & Saturation Gradients

These gradients show how the Decimal color 14645664 changes by changing the brightness by 10 percent. The first figure shows a shift by +10% for each color and the second figure -10%.

Similar to the brightness gradients but the following saturation gradients show a change of the Decimal color 14645664 by changing the saturation by 10% instead.

 14645664

 14645664

16777215

 12738438

 16756695

 10831213


 16764147

 8989268

 16771327

 7211837

 5439528

 3801107

 1835009

 0

 14645664

 14645664

 14640018

 14651310

 14634116

 14657212

 14628471

 14662857

 14622825

 14668503

 14617179

 14674405

 14614613

 14680051

 14680063

Harmonies

Analogous

The Analogous color harmony consists of three colors that are next to each other on the color wheel.



12944070



14645664



14908281

Triad

The Triadic color harmony groups three colors that are evenly spaced from another and form a triangle on the color wheel.



14645664



9347408



43225

Complementary

The Complementary color scheme is a pair of colors which are on the opposite of each other on the color wheel.



14645664



7987128

Split Complementary

Split-complementary colors differ from the complementary color scheme. The scheme consists of three colors, the original color and two neighbors of the complement color.



44474



14645664



6269292

Square

The Square scheme is like the rectangle color scheme, but the four colors are evenly spaced on the color wheel.



14645664



11900233



44434



4825063

Rectangle

The Rectangle color scheme consists of four colors that form a rectangle on the color wheel.



14645664



14320226



44434



43729

Sweetspot

The Sweet Spot groups the original color and five complimentary colors.



14645664



16767977



12089823



8415858



0



8421504

Same Dimension

The Same Dimension uses a secret algorithm to generate beautiful new colors.



14645664



16741288



14648697



7365993



11534403



3145747

Inverse Universe

The Inverse Universe completely reimagines the original color for something new.



14645664



16741288



7984095



7365993



11534403



3145747

Previews

White Background



This preview shows how the Decimal color 14645664 looks on a white background.

Color Contrast Check

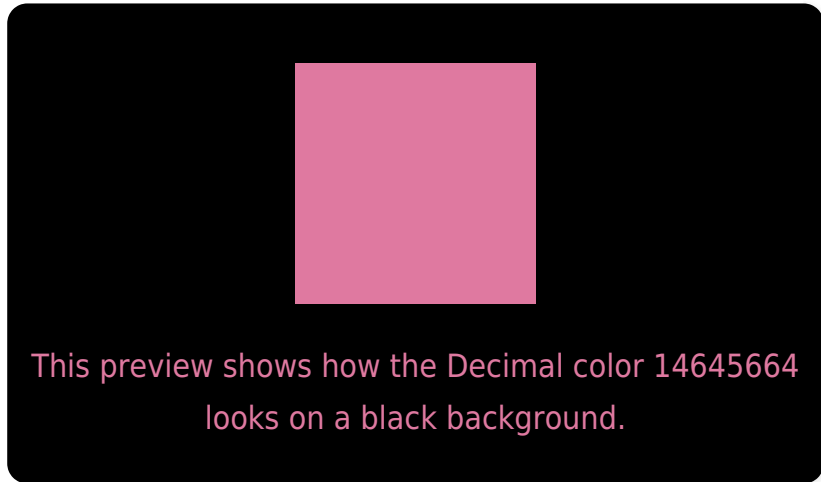
Large Text (above 18pt) WCAG AA × Fail

Any Text WCAG AA × Fail

Large Text (above 18pt) WCAG AAA × Fail

Any Text WCAG AAA × Fail

Black Background



Color Contrast Check

Large Text (above 18pt) WCAG AA ✓ Pass

Any Text WCAG AA ✓ Pass

Large Text (above 18pt) WCAG AAA ✓ Pass

Any Text WCAG AAA ✓ Pass

If you want to check with other color combinations, try the [Color Contrast Checker](#).

Decimal 14645664 Background



This preview shows how black text looks on a background with the Decimal color 14645664.




This preview shows how white text looks on a background with the Decimal color 14645664.

Color Blindness Simulation

Color vision deficiency is a very complex topic, and I could not describe the different causes any better than Wikipedia does, so if you want to learn more, you should check out their [article about color blindness](#).

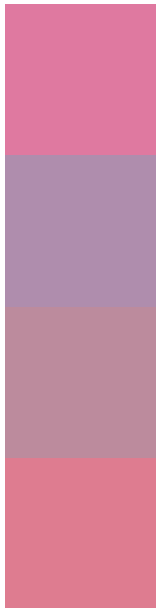
Dichromacy





Tritanopia
14515847

Trichromacy



Original Color
14645664

Protanomaly
11505069

Deuteranomaly
12356509

Tritanomaly
14580880

Monochromacy



Original Color
14645664

Achromatopsia
10263708

Achromatomaly
11833245

CSS Examples

Text

The CSS property to change the color of the text to Decimal 14645664 is called "color". The color property can be set on classes, ids or directly on the HTML element.

This example shows how text in the color #DF79A0 looks like.

```
.text, #text, p{  
    color:#DF79A0  
}
```

If you want to add a text shadow in that color use the text-shadow property, you can generate a text shadow directly with our [CSS Text Shadow Generator](#).

Here you see how black text with a 4 pixel #DF79A0 colored shadow looks like.

```
.shadow{ text-shadow: 4px 4px 2px #DF79A0
}
```

Border

The CSS property to change the border of an element to Decimal 14645664 is called "border". The border property can be set on classes, ids or directly on the HTML element.

This example shows the color as border, it can be applied via the CSS property "border" or "border-color".

```
.border, #border, table{ border:4px solid
#DF79A0 }
```

If only the border color should be changed use the property `border-color`.

```
.border{ border-color:#DF79A0 }
```

If you want to add a box shadow in that color use:

Here you see how a box with a 4 pixel #DF79A0 colored shadow looks like.

```
.boxshadow{ -moz-box-shadow:4px 4px 4px  
4px #DF79A0; -webkit-box-shadow:4px 4px  
4px 4px #DF79A0; box-shadow:4px 4px 4px  
4px #DF79A0 }
```

Background

The CSS property to change the background color of an element to Decimal 14645664 is called "background". The background property can be set on classes, ids or directly on the HTML element.

```
.background, #background, body{  
background:#DF79A0 }
```

If only the background color should be changed can be used:

```
.background{ background-color:#DF79A0 }
```

This example shows the color as background, it is applied via the CSS property "background".

To optimize and compress your CSS code, you can use our [online CSS compressor and optimizer](#) based on csstidy. If you want to create a linear or radial gradient as background or border, check our [CSS Gradient Generator](#).

Hey! You found this booklet interesting? Support Converting Colors with the new Membership Option!

The pro membership hides all ads, plus gives you double the colors in the color bucket, and more awesome pro features!

[Learn more, Memberships starting at \\$2.50/m!](#)

**Follow me
on Twitter!**

@ConvertingColor