

# Converting Colors

Decimal(14647712)

Have a look what the booklet for  
Decimal(14647712) contains.

<b>Decimal(14647712)</b> .....	3
<i><b>Conversions</b></i> .....	4
<i><b>Details</b></i> .....	6
<i><b>Harmonies</b></i> .....	11
<i><b>Previews</b></i> .....	23
<i><b>Color Blindness Simulation</b></i> .....	26
<i><b>CSS Examples</b></i> .....	29

# **Color**

**Decimal(14647712)**

# Conversions

## Conversions Part 1

<b>Format</b>	<b>Color</b>
Hex	DF81A0
RGB	223, 129, 160
RGB Percent	87%, 51%, 63%
CMY	0.1255, 0.4941, 0.3725
CMYK	0.00, 0.42, 0.28, 0.13
HSL	340°, 59%, 69%
HSV	340°, 42%, 87%
XYZ	44.6268, 33.9266, 37.4541
YIQ	160.6400, 46.0730, 29.5690

# Conversions

## Conversions Part 2

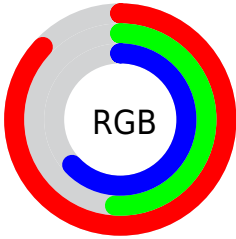
<b>Format</b>	<b>Color</b>
R <sub>Y</sub> B	223, 129, 160
Decimal	14647712
CIE Lab	64.90, 39.89, -0.64
CIE LCh	65, 39.898, 359.075
Yxy	33.9266, 0.3847, 0.2925
Android (android.graphics.Color)	4292837792 (0xFFDF81A0)
YUV	160.6400, -0.3155, 54.6897
Hunter-Lab	58.2465, 34.8303, 2.6475

# Details

The Decimal color **14647712** is a light color, and the websafe version is hex **CC6699**. A complement of this color would be **8511424**, and the grayscale version is **10592673**.

A 20% lighter version of the original color is **16758743**, and **10898797** is the 20% darker color. If you saturate the color by 10%, you get **14642065**, and if you desaturate by 10%, it is **14653359**.

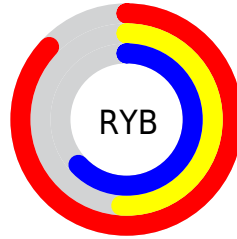
# Distribution



Red (87%)

Green (51%)

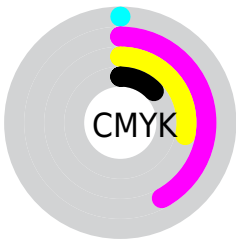
Blue (63%)



Red (87%)

Yellow (51%)

Blue (63%)

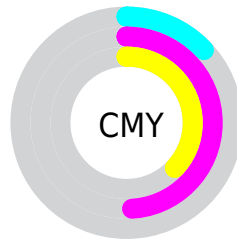


Cyan (0%)

Magenta (42%)

Yellow (28%)

Black (13%)



Cyan (13%)

Magenta (49%)

Yellow (37%)

# Brightness & Saturation Gradients

These gradients show how the Decimal color 14647712 changes by changing the brightness by 10 percent. The first figure shows a shift by +10% for each color and the second figure -10%.

Similar to the brightness gradients but the following saturation gradients show a change of the Decimal color 14647712 by changing the saturation by 10% instead.



 14647712

 14647712

16777215

 12740486

 16758743

 10898797


 16766195

 9057364

 16773375

 7215421

 5505064

 3801107

 2097153

 0

 14647712

 14647712

 14642065

 14653359

 14636162

 14659262

 14630515

 14664909

 14624868

 14670556

 14619221

 14676203

 14614602

 14680058

 14680063

# Harmonies

## Analogous

The Analogous color harmony consists of three colors that are next to each other on the color wheel.



13207747



14647712



14779517

# Triad

The Triadic color harmony groups three colors that are evenly spaced from another and form a triangle on the color wheel.



14647712



9479773



43994

# Complementary

The Complementary color scheme is a pair of colors which are on the opposite of each other on the color wheel.



14647712



8511424

# Split Complementary

Split-complementary colors differ from the complementary color scheme. The scheme consists of three colors, the original color and two neighbors of the complement color.



44991



14647712



6663544

# Square

The Square scheme is like the rectangle color scheme, but the four colors are evenly spaced on the color wheel.



14647712



11901781



2732187



6529508

# Rectangle

The Rectangle color scheme consists of four colors that form a rectangle on the color wheel.



14647712



14191209



2732187



44498



# Sweetspot

The Sweet Spot groups the original color and five complimentary colors.



14647712



16768745



12616159



8416114



0



8421504



# Same Dimension

The Same Dimension uses a secret algorithm to generate beautiful new colors.



14647712



16743848



14651777



7365993



11534394



3145744



# Inverse Universe

The Inverse Universe completely reimagines the original color for something new.



14647712



16743848



8507359



7365993



11534394

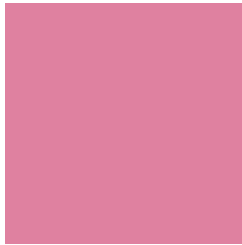


3145744



# Previews

## White Background



This preview shows how the Decimal color 14647712 looks on a white background.

## Color Contrast Check

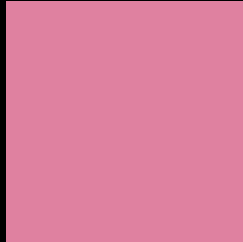
Large Text (above 18pt) WCAG AA × Fail

Any Text WCAG AA × Fail

Large Text (above 18pt) WCAG AAA × Fail

Any Text WCAG AAA × Fail

# Black Background



This preview shows how the Decimal color 14647712 looks on a black background.

## Color Contrast Check

Large Text (above 18pt) WCAG AA ✓ Pass

Any Text WCAG AA ✓ Pass

Large Text (above 18pt) WCAG AAA ✓ Pass

Any Text WCAG AAA ✓ Pass

If you want to check with other color combinations, try the [Color Contrast Checker](#).



## Decimal 14647712 Background



This preview shows how black text looks on a background with the Decimal color 14647712.

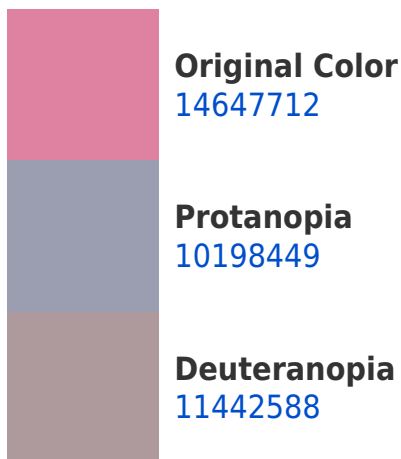



This preview shows how white text looks on a background with the Decimal color 14647712.

# Color Blindness Simulation

Color vision deficiency is a very complex topic, and I could not describe the different causes any better than Wikipedia does, so if you want to learn more, you should check out their [article about color blindness](#).

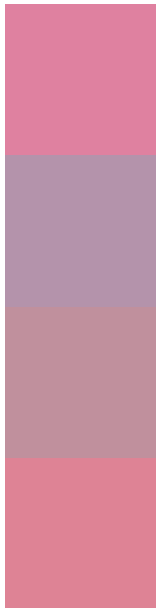
## Dichromacy





**Tritanopia**  
14517390

# Trichromacy



**Original Color**  
14647712

**Protanomaly**  
11834283

**Deuteranomaly**  
12619933

**Tritanomaly**  
14582677

# Monochromacy



**Original Color**  
14647712

**Achromatopsia**  
10592673

**Achromatomaly**  
12096929

# CSS Examples

## Text

The CSS property to change the color of the text to Decimal 14647712 is called "color". The color property can be set on classes, ids or directly on the HTML element.

This example shows how text in the color #DF81A0 looks like.

```
.text, #text, p{  
    color:#DF81A0  
}
```

If you want to add a text shadow in that color use the text-shadow property, you can generate a text shadow directly with our [CSS Text Shadow Generator](#).

Here you see how black text with a 4 pixel #DF81A0 colored shadow looks like.

```
.shadow{ text-shadow: 4px 4px 2px #DF81A0
}
```

## Border

The CSS property to change the border of an element to Decimal 14647712 is called "border". The border property can be set on classes, ids or directly on the HTML element.

This example shows the color as border, it can be applied via the CSS property "border" or "border-color".

```
.border, #border, table{ border:4px solid
#DF81A0 }
```

If only the border color should be changed use the property `border-color`.

```
.border{ border-color:#DF81A0 }
```

If you want to add a box shadow in that color use:

Here you see how a box with a 4 pixel #DF81A0 colored shadow looks like.

```
.boxshadow{ -moz-box-shadow:4px 4px 4px  
4px #DF81A0; -webkit-box-shadow:4px 4px  
4px 4px #DF81A0; box-shadow:4px 4px 4px  
4px #DF81A0 }
```

# Background

The CSS property to change the background color of an element to Decimal 14647712 is called "background". The background property can be set on classes, ids or directly on the HTML element.

```
.background, #background, body{  
background:#DF81A0 }
```

If only the background color should be changed can be used:

```
.background{ background-color:#DF81A0 }
```

This example shows the color as background, it is applied via the CSS property "background".

To optimize and compress your CSS code, you can use our [online CSS compressor and optimizer](#) based on csstidy. If you want to create a linear or radial gradient as background or border, check our [CSS Gradient Generator](#).



Hey! You found this booklet interesting? Support Converting Colors with the new Membership Option!

The pro membership hides all ads, plus gives you double the colors in the color bucket, and more awesome pro features!

**[Learn more, Memberships starting at \\$2.50/m!](#)**

**Follow me  
on Twitter!**

@ConvertingColor